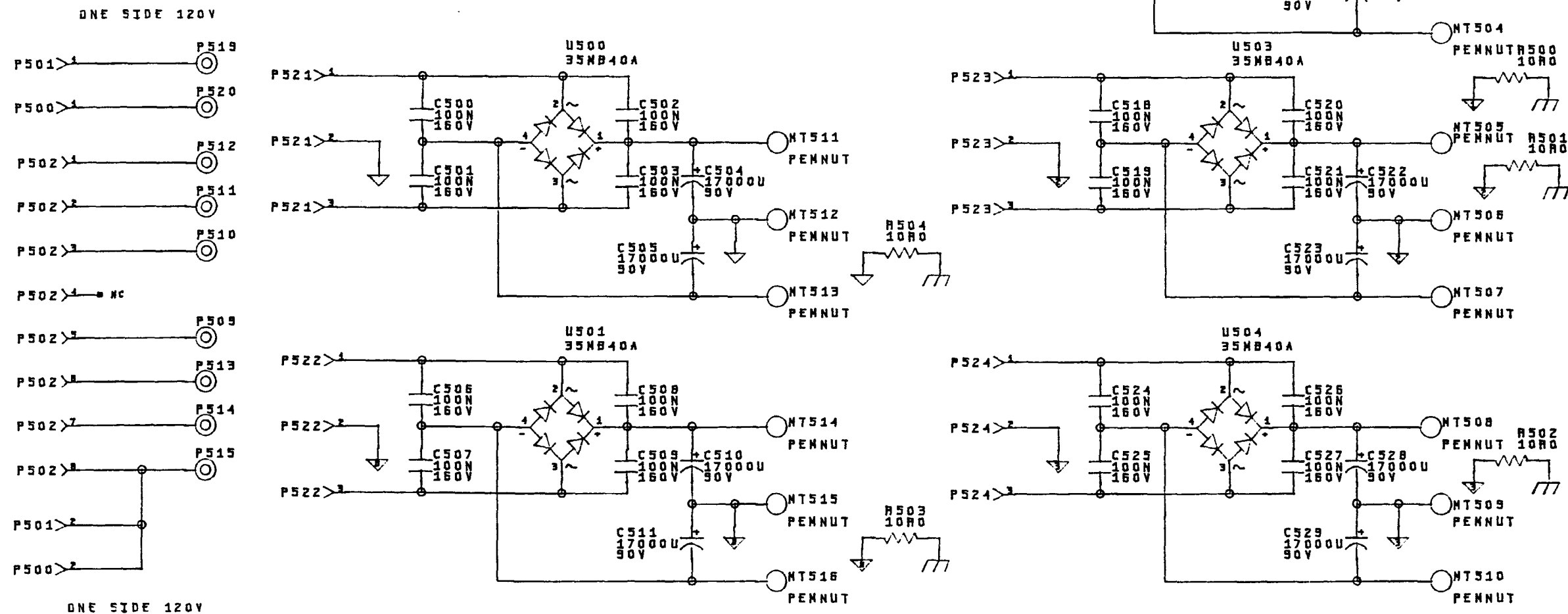


1. P516, 517, 518 mounts to solderside of PCB.
2. U500-504 mounts to solderside of PCB.
3. P523-525 are new single brackets (see MW for Details).
4. Slots for bridge are too small on PCB, enlarge.
5. P516 & 517 are 6 pin R/A Molex, mounts solderside PCB.
6. P518 3 pin R/A Molex, mounts solderside PCB.
7. PCB move caps so they don't hang off board.



ORIGINAL IN RED

☒ Part # 590455C

☒ Part # 342519B

Release date: 9/12/97

Type of Release: ☐ Prototype ☒ Pilot ☐ 1st production ☐ Revision

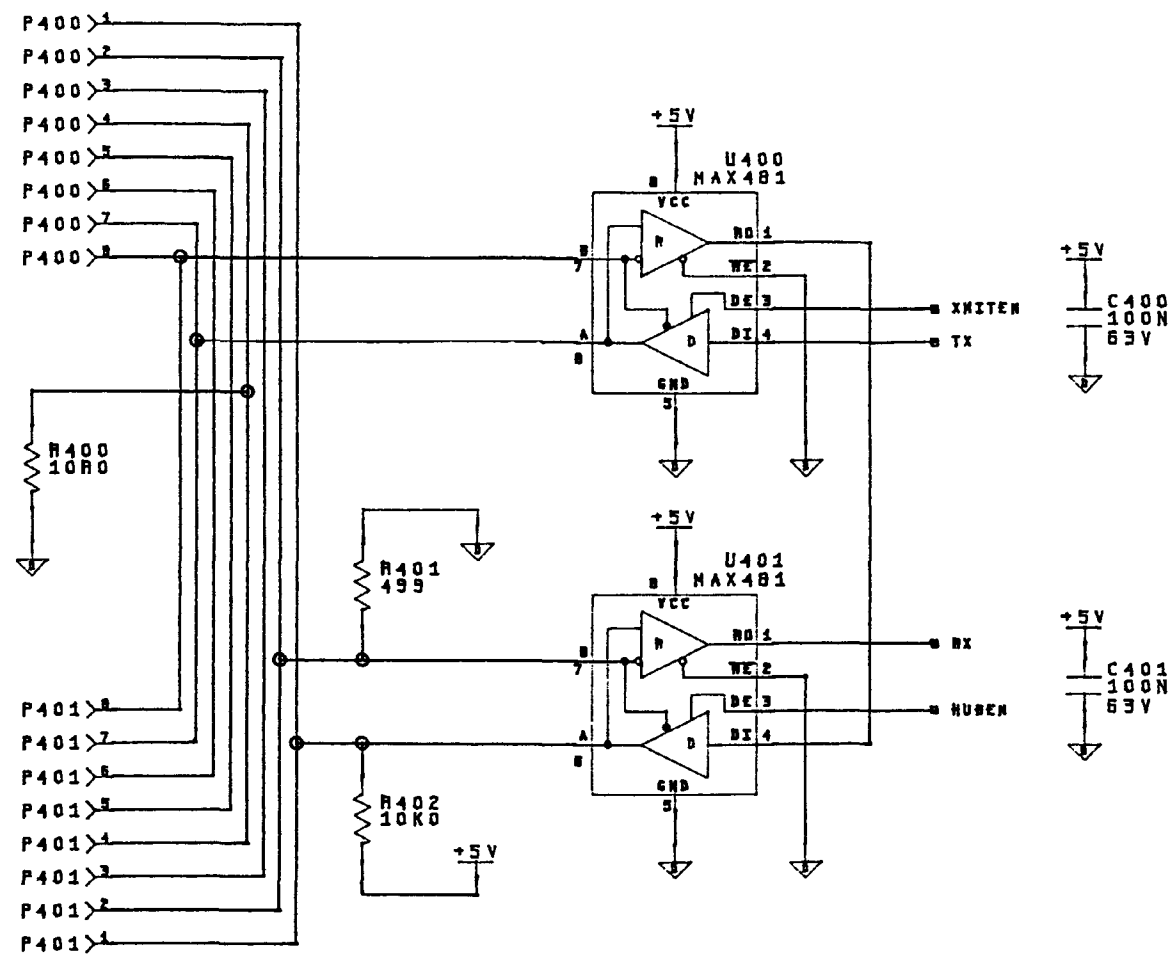
Comments: DWG revision TO CORRECT 200143 CAPSULE. NO ECA

Drafting approved: [Signature] Eng approved: [Signature]

Issued by: [Signature] DATE: 9/15/97

MADRIGAL		2081 South Main Street, Suite 100, San Jose, CA 95128	
MATERIAL		SHEET	DF
USED IN		SIZE	
5 CHANNEL AMP		A B C D E F	
NAME		No.	
UNREG POWER SUPPLY		942519B	

DR. BY	DATE	CH.	DATE
MS	8-6-97		
17000U/90V VAS 21000U/70V		8-12-97	
ISSUE	REVISION	DATE	SCALE



ORIGINAL IN RED

☒ Part # 580460C

☒ Print # 942542E

Release date: _____

Type of release: ☐ Prototype ☐ Pilot ☐ 1st production ☒ Revision

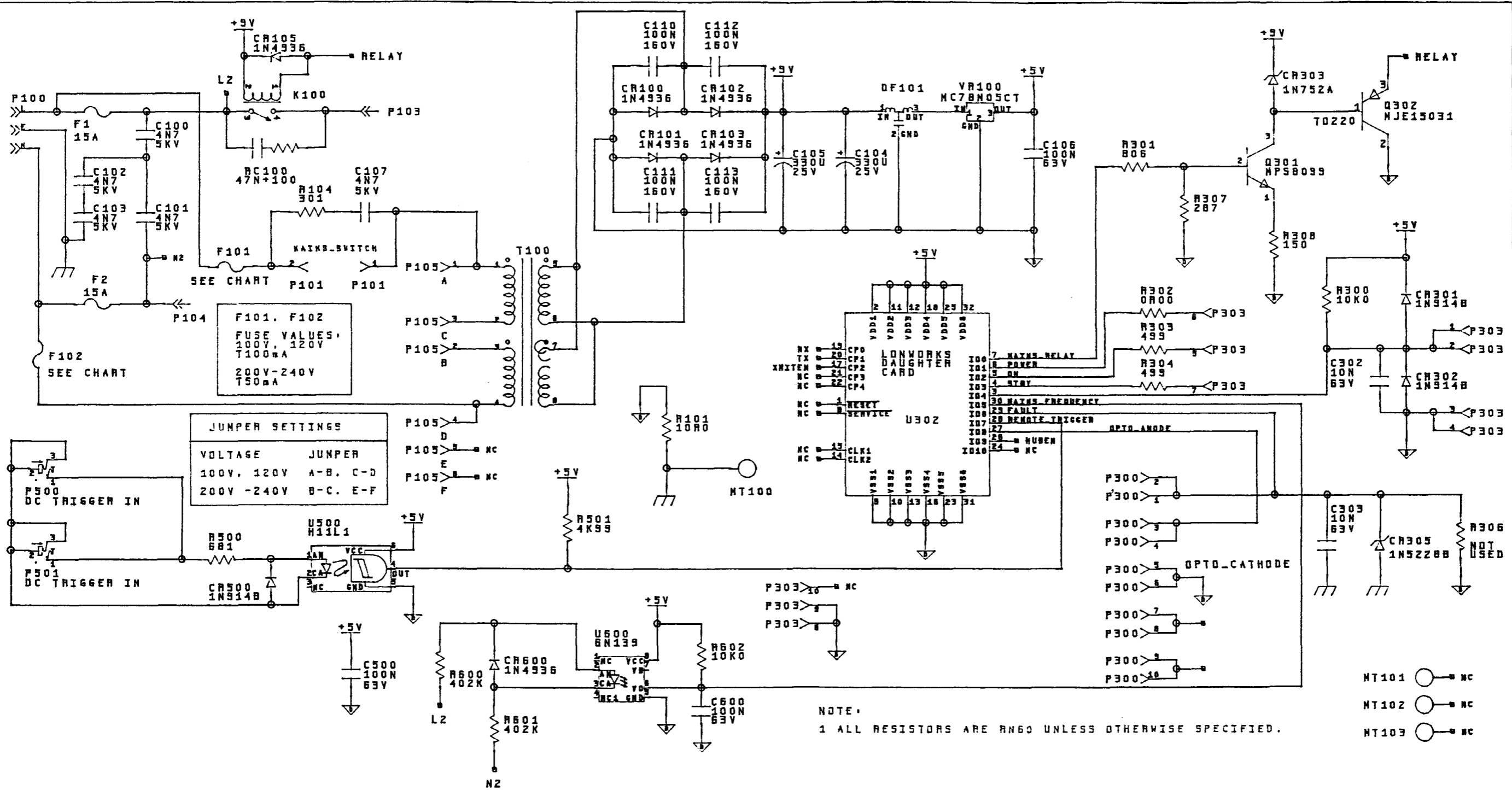
Comments: _____

Engineering approval: _____ Eng approval: *MW*

Issued by: _____ DATE: *11/2/87*

SIGNATURE

				<div>MADRIGAL</div> <div>2001 south main street middletown connecticut 06457 u.s.a.</div>									
E	NO CHANGES TO THIS SHEET	12-9-87		MATERIAL				SHEET 2		OF 2		SIZE 8	
D	CHANGE PIN 7, 8 U400, U401	11-9-87		USED IN AMP 5				A	B	C	D	E	F
C	NO CHANGES TO THIS SHEET	8-24-87											
B				DR. BY MWH	DATE 05/05/87	No. 942542E							
A	VALUE & COMPONENT CHANGE	7-22-87	CH.	DATE									
ISSUE	REVISION	DATE	SCALE		NAME AC SUPPLY BOARD								



ORIGINAL IN RED

Part # 580460C

Print # 942542E

Released date: 12/19/97

Type of release: ☐ Prototype ☐ Pilot ☐ Not production ☒ Revision

Comments: DRAWING CORRECTION
ONLY TO BOM CHANGES

Drafting approved: [Signature] Eng approved: [Signature]

Issued by: [Signature] DATE: 4/3/97

			MADRIGAL			2081 south main street addleton wisconsin 53417 U.S.A.		
E	FUSE VALUE CORRECTION	12-9-97	MATERIAL			SHEET 1	OF 2	SIZE B
D	NO CHANGES TO THIS SHEET	11-9-97	USED IN			A	B	C D E F
C	ADD C303, CR305	8-24-97	AMP 5			No.		
B			NAME			942542E		
A	VALUE & COMPONENT CHANGE	7-22-97	AC SUPPLY BOARD (CHAINS)					
ISSUE	REVISION	DATE	SCALE					