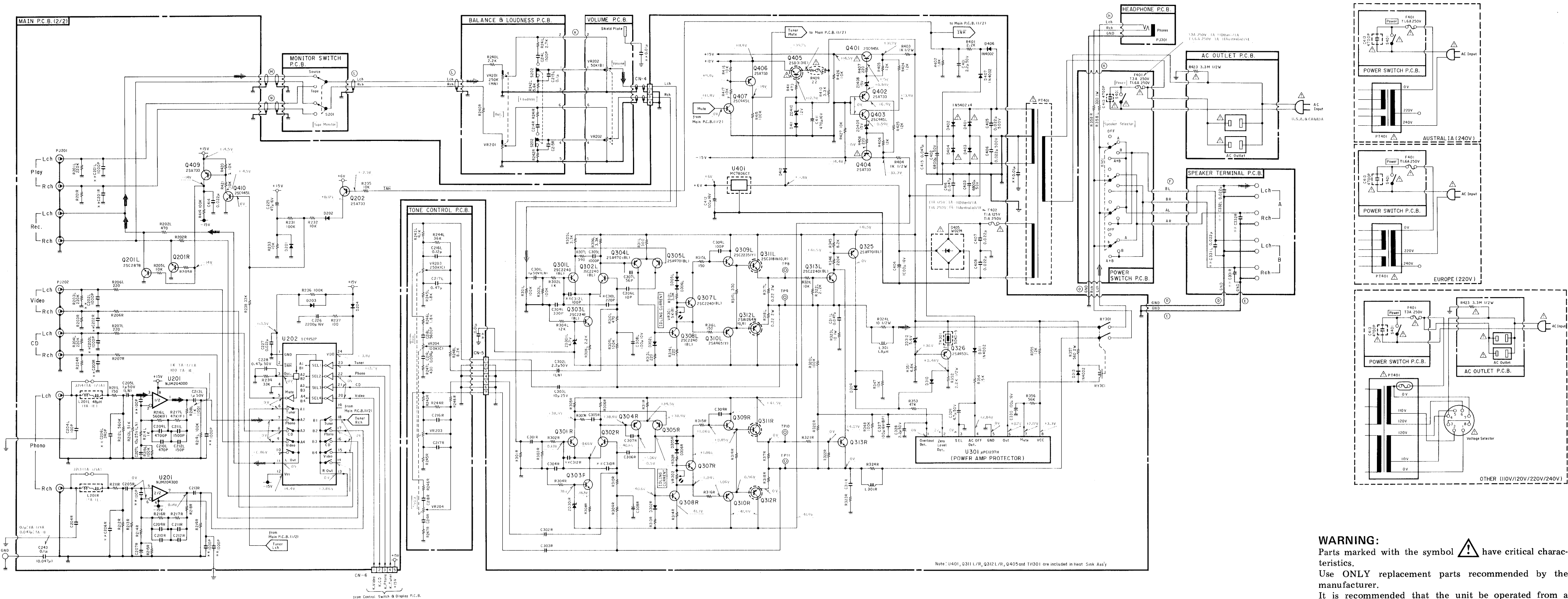
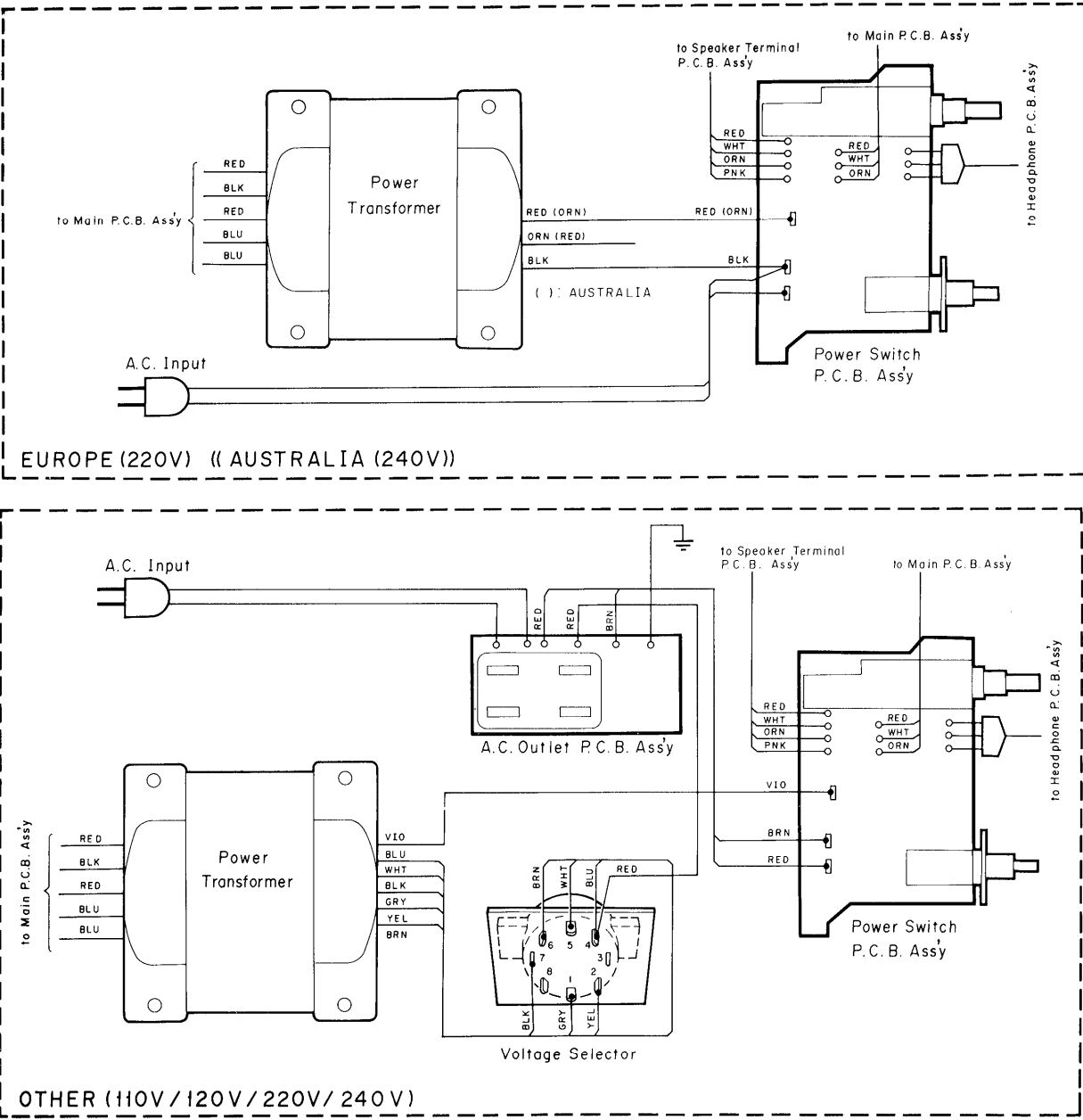


7.2.2. Amplifier Section



8. WIRING DIAGRAM



- Notes: 1. Table of wire colors
- | | |
|--------------|--------------|
| BRN — Brown | BLU — Blue |
| RED — Red | VIO — Violet |
| ORN — Orange | GRY — Gray |
| YEL — Yellow | WHT — White |
| GRN — Green | BLK — Black |
2. Component side view of the P.C.B. is illustrated unless otherwise specified.
3. Wire tube color is shown in ().

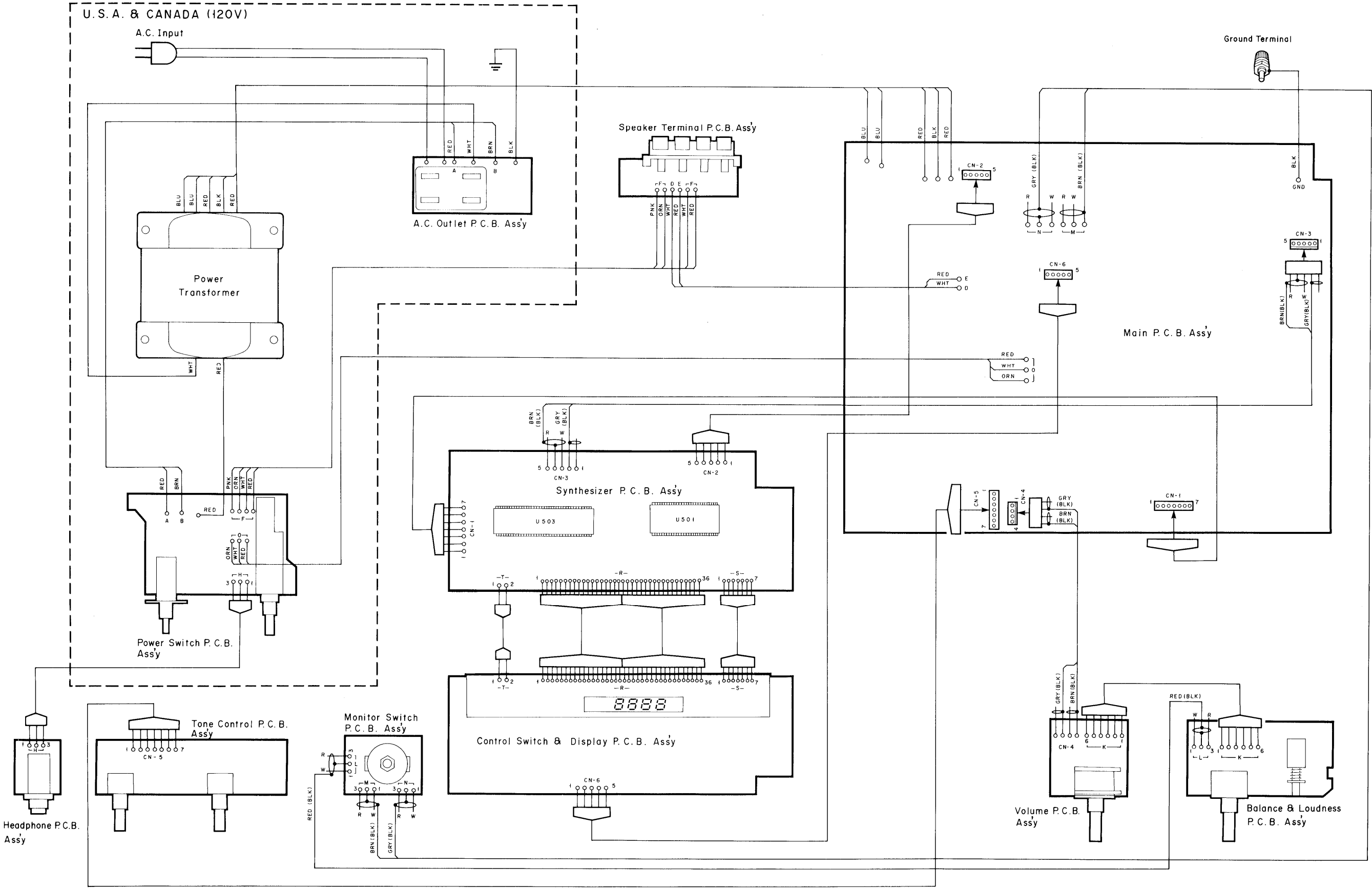
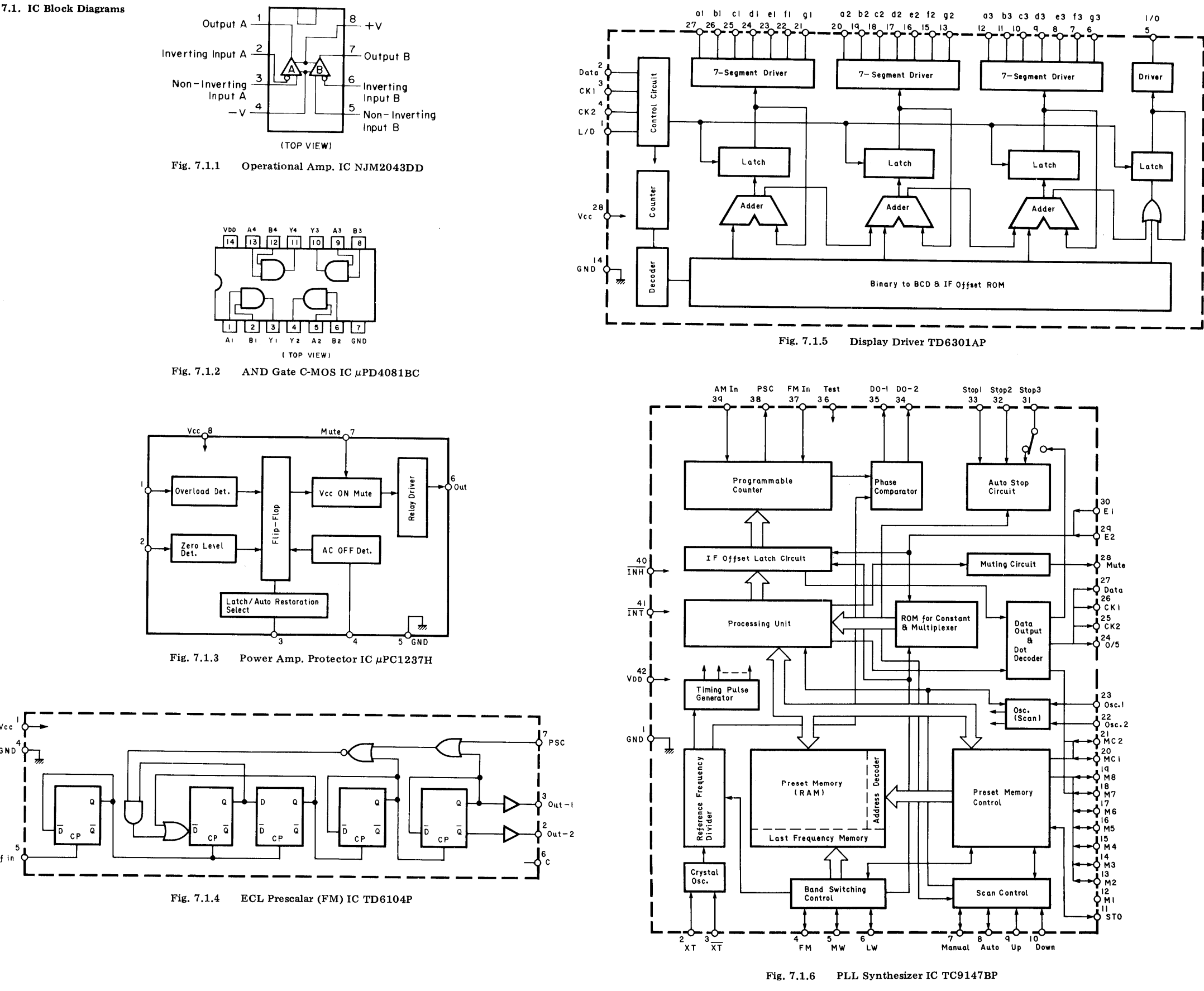


Fig. 8

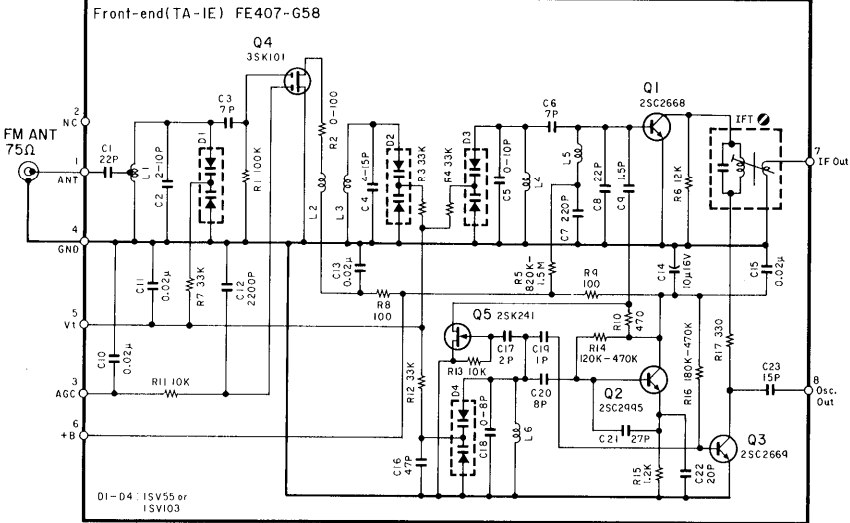
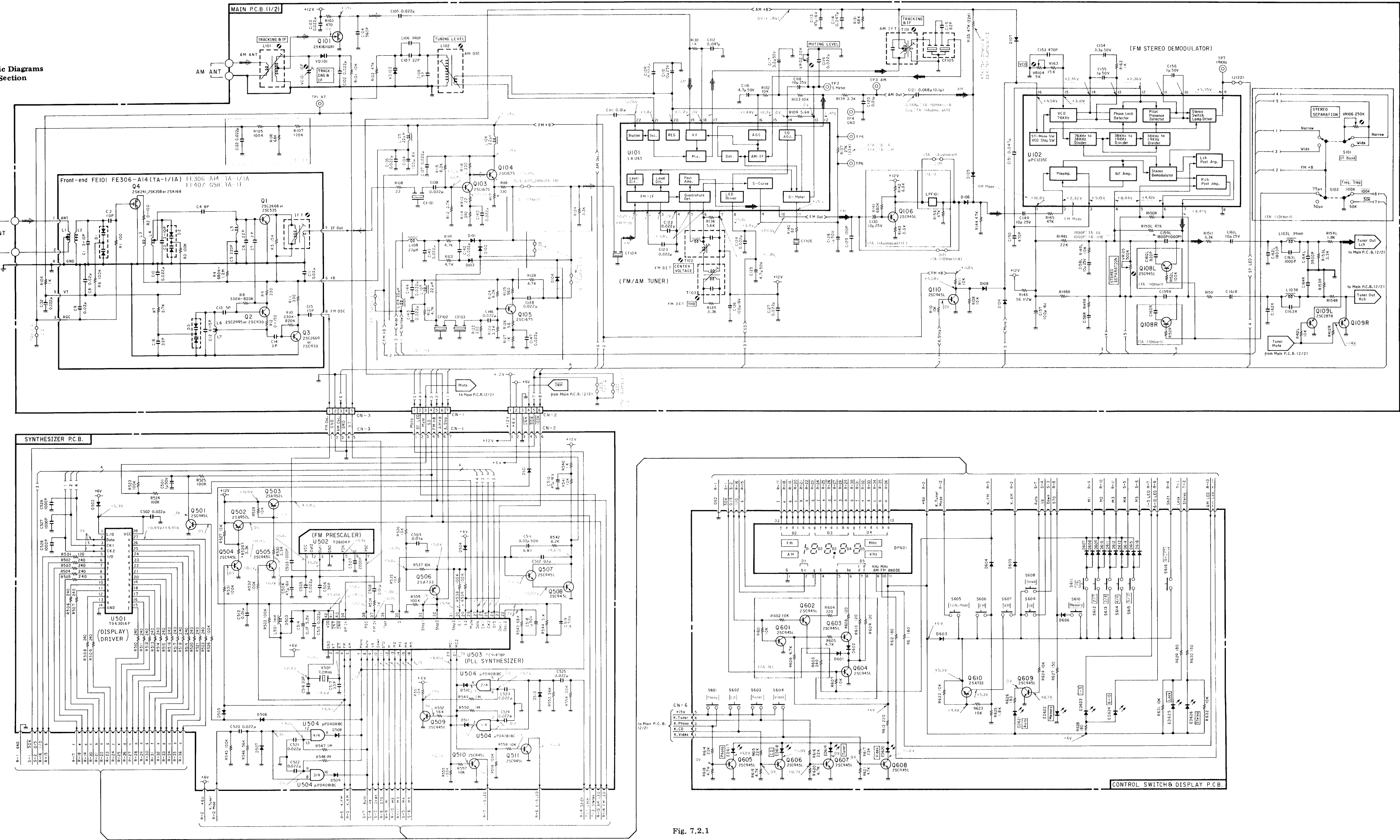
7. SCHEMATIC DIAGRAMS

Schematic Ref. No.	Part No.	Description	Schematic Ref. No.	Part No.	Description	Schematic Ref. No.	Part No.	Description	Schematic Ref. No.	Part No.	Description	Schematic Ref. No.	Part No.	Description
T101	OB51271A	AM IFT Coil	R143	OB09689A	RK 3.3K 1/6W J (TA-1 (Australia) & TA-1E)	R415	OB09725A	RK 100K 1/6W J	C209L,R	OB05652A	CML 4700P 50V J			
T102	OB51272A	FM DET (A) Coil				R416,417	OB09701A	RK 10K 1/6W J	C210L,R	OB09270A	CPP 470P 100V J	OB81931A	Antenna Terminal (TA-1 & TA-1A) (1)	
T103	OB51273A	FM DET (B) Coil				R419	OB09725A	RK 100K 1/6W J	C211L,R	OB05653A	CML 1500P 50V J	OB81979A	Antenna Terminal (TA-1E) (1)	
L101	OB51269A	AM ANT Coil	R144,145	OB09717A	RK 47K 1/6W J	R420,421	OB09701A	RK 10K 1/6W J	C212L,R	OB41895A	CSP 150P 50V J	OB83362A	Lead Wire BLK 180mm (1)	
L102	OB51270A	AM OSC Coil	R146	OB20513A	RK 56 1/2W J	R424,425	OB09263A	RK 12K 1/4W J	C213L,R	OB01405A	CE 1μ 50V			
L103L,R	OB51276A	Inductor 39mH K	R148L,R	OB09709A	RK 22K 1/6W J	R426,427	OB01888A	RK 10K 1/4W J	C225	OB01403A	CE 47μ 16V	OB83482A	Terminal Pin (L) (TA-1E) (4)	
L104	OB51274A	P. Coil 22μH K-P	R149L,R	OB09701A	RK 10K 1/6W J	V C101	OB42010A	C Trimmer 10P	C226	OB40083A	CE 2200μ 16V	OM04191A	Fuse Label T1A 250V (TA-1E) (1)	
L105,106	OB51274A	P. Coil 22μH K-P	R150L,R	OB09717A	RK 47K 1/6W J	C102,103	OB09291A	CC 0.022μ 50V Z	C227	OB09291A	CC 0.022μ 50V Z			
L107	OB51274A	P. Coil 22μH K-P	R151L,R	OB09689A	RK 3.3K 1/6W J	C104	OB09379A	CC 560P 50V K	C228	OB40111A	CE 0.47μ 50V			
			R152L,R	OB09725A	RK 100K 1/6W J (TA-1 (Other))	C106	OB09291A	CC 0.022μ 50V Z	C243	OB01603A	CML 0.1μ 50V K (TA-1 & TA-1A)			
L108	OB51274A	P. Coil 22μH K-P	R153L,R	OB09689A	RK 3.3K 1/6W J	C107	OB09276A	CC 22P 50V J		OB09387A	CC 0.047μ 50V Z (TA-1E)			
			R154L,R	OB09683A	RK 1.8K 1/6W J	C108	OB09276A	CC 5P 50V C						
L201L,R	OB51266A	Audio Coil 48μH (TA-1E)	R156	OB09717A	RK 47K 1/6W J (TA-1 (Australia) & TA-1E)	C109	OB09291A	CC 0.022μ 50V Z	C301L,R	OB09223A	CE 1μ 50V (LN)			
L301L,R	OB51275A	Audio Coil 1.8μH				C110	OB01674A	CE 10μ 25V	C302L,R	OB09332A	CE 2.2μ 50V (LN)			
VR102	OB32128A	Semi VR 20K	R162	OB09677A	RK 1K 1/6W J	C111	OB09290A	CC 0.01μ 50V Z	C303L,R	OB01674A	CE 10μ 25V			
VR104	OB32126A	Semi VR 5K	R163	OB09705A	RK 15K 1/6W J	C112	OB09387A	CC 0.047μ 50V Z	C304L,R	OB09322A	CPP 330P 100V J	OB11508A	IC MC7806CT	
VR105	OB32132A	Semi VR 500K	R201L,R	OB09733A	RK 220K 1/6W J	C113	OB01403A	CE 47μ 16V	C305L,R	OB05550A	CML 1000P 50V J	OB10245A	TR 2SC3181N (O.R.)	
VR106	OB32141A	Semi VR 250K (TA-1 (Other))	R202L,R	OB09669A	RK 470 1/6W J	C114	OB09387A	CC 0.047μ 50V Z	C306L,R	OB09277A	CC 10P 50V D	OB10244A	TR 2SA1264N (O.R.)	
			R203L,R	OB09733A	RK 220K 1/6W J	C115	OB41880A	CC 82P 50V J	C307L,R	OB41893A	CSP 56P 50V J			
VR301,302	OB32126A	Semi VR 5K	R204L,R	OB09733A	RK 220K 1/6W J	C116	OB40029A	CE 4.7μ 50V	C308L,R	OB05885A	CE 100μ 10V			
R101	OB09701A	RK 10K 1/6W J	R205L,R	OB09701A	RK 10K 1/6W J	C117	OB01863A	CE 3.3μ 50V	C309L,R	OB41894A	CSP 100P 50V J	OB10248A	TR 2SD313 (E)	
R102	OB09717A	RK 47K 1/6W J	R206L,R	OB09661A	RK 220 1/6W J	C118	OB01674A	CE 10μ 25V	C310L,R	OB09291A	CSP 220P 100V J (TA-1E)	OB19607A	Thermistor 50KD-5	
R103	OB09689A	RK 470 1/6W J	R207L,R	OB09661A	RK 220 1/6W J	C119	OB09291A	CC 0.022μ 50V Z		OB41734A	CC 0.047μ 50V J (TA-1E)	OJ05609A	Heat Sink Holder F (1)	
R104	OB09677A	RK 1K 1/6W J	R208L,R	OB09657A	RK 150 1/6W J	C120	OB09290A	CC 0.01μ 50V Z	C311L,R	OB05796A	CML 0.047μ 50V J			
R105	OB09725A	RK 100K 1/6W J (TA-1E)	R212L,R	OB09743A	RK 560K 1/6W J	C121	OB01780A	CML 0.1μ 50V J (TA-1 (Australia) & TA-1E)	C312L,R	OB41071A	CC 100P 50V J (TA-1E)	OJ05608A	Heat Sink (1)	
			R213L,R	OB09718A	RK 51K 1/6W J							OJ05671A	Insulator TO-3P (4)	
R106	OB09721A	RK 68K 1/6W J (TA-1E)	R214L,R	OB09677A	RK 1K 1/6W J		OB05682A	CML 0.068μ 50V J (TA-1 (Other) & TA-1A)	C327	OB40250A	CE 100μ 16V (BP)	OB80202A	Glass Tube 30 (2)	
			R215L,R	OB09725A	RK 100K 1/6W J				C328	OB09372A	CE 2.2μ 50V	OJ05615A	Thermistor Holder (1)	
R107	OB09727A	RK 120K 1/6 W J (TA-1E)	R216L,R	OB22542A	RM 560K 1/6W F				C329	OB40029A	CE 4.7μ 50V			
			R217L,R	OB22419A	RM 47.0K 1/6W F				C330	OB01400A	CE 100μ 16V			
R108	OB09637A	RK 22 1/6W J	R218L,R	OB09677A	RK 1K 1/6W J	C122,123	OB09291A	CC 0.022μ 50V Z	C401	OB09372A	CE 2.2μ 50V	OJ05672A	Insulator TO-220 (2)	
R109	OB09695A	RK 5.6K 1/6W J				C124	OB09291A	CC 0.022μ 50V Z	C402,403	OB40505A	CE 6800μ 50V	OB08594A	Transistor Bush (2)	
R110	OB09701A	RK 10K 1/6W J				C125	OB40029A	CE 4.7μ 50V	C404	OB40082A	CE 1000μ 16V	OJ05610A	Heat Sink Holder (1)	
R111	OB09701A	RK 10K 1/6W J				C126	OB01400A	CE 100μ 16V	C406,406	OB41901A	CC 0.022μ 500V Z			
R112	OB09687A	RK 2.7K 1/6W J	R219L,R	OB09725A	RK 100K 1/6W J	C127	OB09291A	CC 0.022μ 50V Z	C407,408	OB09291A	CC 0.022μ 50V Z	OE00868A	BT3x8 @ Binding (6)	
R113	OB09637A	RK 22 1/6W J	R231	OB09725A	RK 100K 1/6W J	C128	OB01405A	CE 1μ 50V	C411	OB01392A	CE 470μ 16V	OE00865A	BT3x10 @ Binding (4)	
R114	OB09667A	RK 390 1/6W J	R232,233	OB09701A	RK 10K 1/6W J	C129	OB41071A	CE 100P 50V J	C412	OB01400A	CE 100μ 16V			
R115	OB09699A	RK 8.2K 1/6W J	R235	OB01888A	RK 10K 1/4W J	C130	OB01674A	CE 10μ 25V (TA-1 (Australia) & TA-1E)	C414	OB09291A	CC 0.022μ 50V Z			
R116	OB09665A	RK 330 1/6W J	R236	OB09725A	RK 100K 1/6W J				C415,416	OB05796A	CML 0.047μ 50V J			
R117	OB09677A	RK 1K 1/6W J	R237	OB09653A	RK 100 1/6W J	C132	OB09291A	CC 0.022μ 50V Z	RYJ01	Relay VB-24MBU	Slide Switch 2-2 (TA-1 (Other))			
R118	OB09665A	RK 330 1/6W J	R238,239	OB09713A	RK 33K 1/6W J	C133	OB09291A	CC 0.022μ 50V Z (TA-1E)	S101,102	OB90331A	Fuse T1A 250V (TA-1 (Australia) & TA-1E)			
R119,120	OB09693A	RK 4.7K 1/6W J (TA-1 (Other))	R301L,R	OB01889A	RK 100K 1/4W J				F402	OB90289A	Fuse T1A 125V (TA-1 (Other) & TA-1E)			
			R302L,R	OB01857A	RK 1K 1/4W J	C134	OB01400A	CE 100μ 16V						
R121	OB09693A	RK 4.7K 1/6W J (TA-1 & TA-1E)	R303L,R	OB01889A	RK 100K 1/4W J	C135	OB09291A	CC 0.022μ 50V Z						
R122	OB09665A	RK 330 1/6W J (TA-1 & TA-1E)	R304L,R	OB09263A	RK 12K 1/4W J	C137,138	OB09291A	CC 0.022μ 50V Z	OB90329A					
R123	OB09689A	RK 3.3K 1/6W J (TA-1 & TA-1E)	R305L,R	OB01681A	RK 3.3K 1/4W J	C140	OB09291A	CC 0.022μ 50V Z						
R124	OB09699A	RK 8.2K 1/6W J (TA-1 & TA-1E)	R306L,R	OB01681A	RK 3.3K 1/4W J	C142,143	OB09291A	CC 0.022μ 50V Z						
R125	OB09671A	RK 560 1/6W J (TA-1 & TA-1E)	R307L,R	OB05691A	RK 390 1/4W J									
R126	OB09647A	RK 56 1/6W J (TA-1 & TA-1E)	R308L,R	OB05622A	RK 2.2K 1/4W J	C144,145	OB09291A	CC 0.022μ 50V Z (TA-1 & TA-1E)						
R127	OB09677A	RK 1K 1/6W J (TA-1 & TA-1E)	R309L,R	OB01889A	RK 100K 1/4W J									
R128	OB09693A	RK 4.7K 1/6W J (TA-1 (Other))	R310L,R	OB05576A	RK 470 1/4W J	C146,147	OB09291A	CC 0.022μ 50V Z (TA-1 & TA-1E)						
R129	OB09689A	RK 3.3K 1/6W J (TA-1 (Other))	R311L,R	OB01681A	RK 3.3K 1/4W J	C148	OB09291A	CC 0.022μ 50V Z (TA-1 & TA-1E)						
			R312L,R	OB24186A	RF 300 1/4W J									
R130	OB09677A	RK 1K 1/6W J	R313L,R	OB24185A	RF 220 1/4W J									
R131	OB09721A	RK 68K 1/6W J	R314L,R	OB24185A	RF 220 1/4W J	C149	OB01674A	CE 10μ 25V						
R132,133	OB09701A	RK 10K 1/6W J	R315L,R	OB05795A	RK 150 1/4W J	C150	OB09286A	CC 470P 50V K						
R134	OB09689A	RK 3.3K 1/6W J	R316L,R	OB05795A	RK 150 1/4W J	C151	OB05796A	CML 0.047μ 50V J						
R135	OB09709A	RK 22K 1/6W J (TA-1 (Australia) & TA-1E)	R317L,R	OB24180A	RC 0.22 2W K	C153	OB09270A	CSP 470P 100V J						
			R318L,R	OB24180A	RC 0.22 2W K	C154	OB01863A	CE 3.3μ 50V						
			R319L,R	OB05577A	RK 330 1/4W J	C155,156	OB01405A	CE 1μ 50V						
			R320L,R	OB01889A	RK 100K 1/4W J	C157	OB01400A	CE 100μ 16V						
			R321L,R	OB01888A	RK 10K 1/4W J	C158L,R	OB01674A	CE 10μ 25V						
			R322L,R	OB05622A	RK 2.2K 1/4W J	C159L,R	OB05550A	CML 1000P 50V J (TA-1 & TA-1E)						
			R323L,R	OB24181A	RF 10 1W J									
			R324L,R	OB20433A	RK 10 1/2W J									
			R345	OB09699A	RK 8.2K 1/6W J									
			R346	OB09733A	RK 220K 1/6W J									
			R347	OB01888A	RK 10K 1/4W J									
			R348	OB01889A	RK 100K 1/4W J									
			R351	OB01882A	RK 6.8K 1/4W J									
			R352	OB05612A	RK 47K 1/2W J									
			R353	OB05614A	RK 47K 1/4W J									
			R354	OB01683A	RK 15K 1/4W J									
			R355	OB09263A	RK 12K 1/4W J									
			R356	OB05508A	RK 56K 1/4W J									
			R357	OB24183A	RF 560 2W J									
			R401	OB05622A	RK 2.2K 1/4W J									
			R402	OB05614A	RK 1.8K 1/4W J									
			R403,404	OB20511A	RK 1K 1/2W J									
			R405,406	OB09263A	RK 12K 1/4W J									
			R407,408	OB01933A	RK 220 1/4W J									
			R409	OB24187A	Fuse Resistor 22									
R142	OB09697A	RK 6.8K 1/6W J (TA-1 (Australia) & TA-1E)	R410	OB01681A	RK 3.3K 1/4W J									
			R411	OB05576A	RK 470 1/4W J									
			R412L,R	OB09701A	RK 10K 1/6W J									

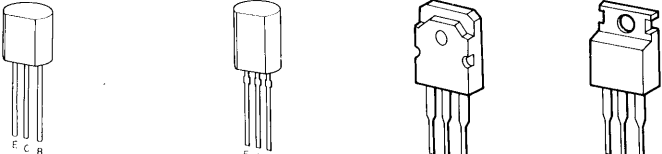
7.1. IC Block Diagrams



7.2. Schematic Diagrams
7.2.1. Tuner Section



Front-end for TA-IE



- 2SA965
- 2SC2235
- 2SA1264
- 2SC3181
- 2SD813



- Notes:
- Diode is 1N4148 unless otherwise specified.
 - 2SA965, 2SA608SP, 2SA1048 and 2SA1175 are interchangeable with each other.
 - 2SC945, 2SC536SP, 2SC2458 and 2SC2785 are interchangeable with each other.
 - Parts marked with ** indicate those for TA-IE.
 - Voltage measuring conditions
 - With no input signal applied to the input terminals.
 - With no lead connected to the speaker terminals.

Fig. 7.2.1