


|                 |          |       |   |  |  |
|-----------------|----------|-------|---|--|--|
| REVISION RECORD |          |       | <div> KPELL Industries<br/>35 Higgins Drive<br/>Middletown, CT 06460</div> |  |  |
| LTP             | COMMENTS | DATE: | TITLE:<br>KSA-200/300S Output Relay<br>(located on Buss board)  |  |  |
|                 |          |       | DRAWN BY:   |  |  |
|                 |          |       |   |  |  |
|                 |          |       | SIZE:   |  |  |
|                 |          |       |   |  |  |
|                 |          |       | DRAWING NO:   |  |  |
|                 |          |       |   |  |  |
|                 |          |       | C   |  |  |
|                 |          |       |   |  |  |
|                 |          |       | 100-0762-   |  |  |
|                 |          |       |   |  |  |
|                 |          |       | DATE:   |  |  |
|                 |          |       |   |  |  |
|                 |          |       | EET   |  |  |
|                 |          |       |   |  |  |

### KSA-200S/300S TEST POINT DESCRIPTIONS

TP-1 = CATHODE OF D32 (RECTIFIED OUTPUT FOR BIAS TRIGGER LEVELS.)

TP-2 = OUTPUT OF U5A-1 (BIAS LEVEL 4 TRIGGER)

TP-3 = OUTPUT OF U5B-2 (BIAS LEVEL 3 TRIGGER)

TP-4 = OUTPUT OF U5C-13 (BIAS LEVEL 2 TRIGGER)

TP-5 = OUTPUT OF U5D-14 (BIAS LEVEL 1 TRIGGER)

NOTE: SILK-SCREEN ON THE DRIVER BRD FOR TP-4 AND TP-5 ARE REVERSED!!

TP-6 = OUTPUT OF U6-8 (BIAS LEVEL 4 )

TP-7 = OUTPUT OF U7-8 (BIAS LEVEL 3)

TP-8 = OUTPUT OF U8-8 (BIAS LEVEL 2)

TP-9 = OUTPUT OF U9-8 (BIAS LEVEL 1)

TP-10 = INPUT TO U8-6 (BIAS LEVEL 2 BURN-IN POINT)

TP-11 = OUTPUT OF U10 (BIAS CONTROL OUTPUT)

TP-12 = OUTPUT OF U14B-7 (TEMP. PROTECTION)

TP-13 = TEMPERATURE SENSOR

TP-14 = OUTPUT OF THE 12V REGULATOR

NOTE: THE JUMPER CONNECTION BETWEEN TP-10 AND TP-12 IS THE UNIT BURN-IN CONFIGURATION.

TP-15 = OUTPUT OF U4 (LM285 REGULATOR 1.235V)

TP-16 = THE OUTPUT OF THE AMP OR THE INPUT TO THE SERVO AT U2 VIA F.C.

TP-17 = THE INPUT TO U1, USED TO BY PASS THE INPUT DC PROTECTION.

TP-18 = GROUND POINT

SOFTWARE VERSIONS

5/19/95

AMPS

1-2-3 "S" SERIES REV.G AND REV.H FACEPLATE BOARDS  
(W/AC LINE SWITCHES)

120VAC = V3.16 (60HZ ONLY!!)

100VAC, 200VAC THRU 240VAC = V3.10 (50HZ/60HZ!!)

1-2-3 "S" SERIES REV.E (COLOR DEDICATED LINE VOLTAGE BRD)

SOFTWARE VERSION IS THE SAME AS FOR THE REV.G BOARDS.

1-2-3 "S" SERIES REV.B FACEPLATE BRD (DOUBLE LARGE RELAY BRD)

ALL VOTAGES = V1.3 (THESE ARE NOT FREQUENCY SENSITIVE)

KSA-50S ALL REVISION FACEPLATE BOARDS = V1.4

PREAMPS


KRC-HR PREAMP REV.G CONTROL BOARD = V1.1

KRC PREAMP REV.C THRU REV.E CONTROL BOARD = V1.3

KRC PREAMP REV.B (PAL) CONTROL BOARD = U2 V1.1

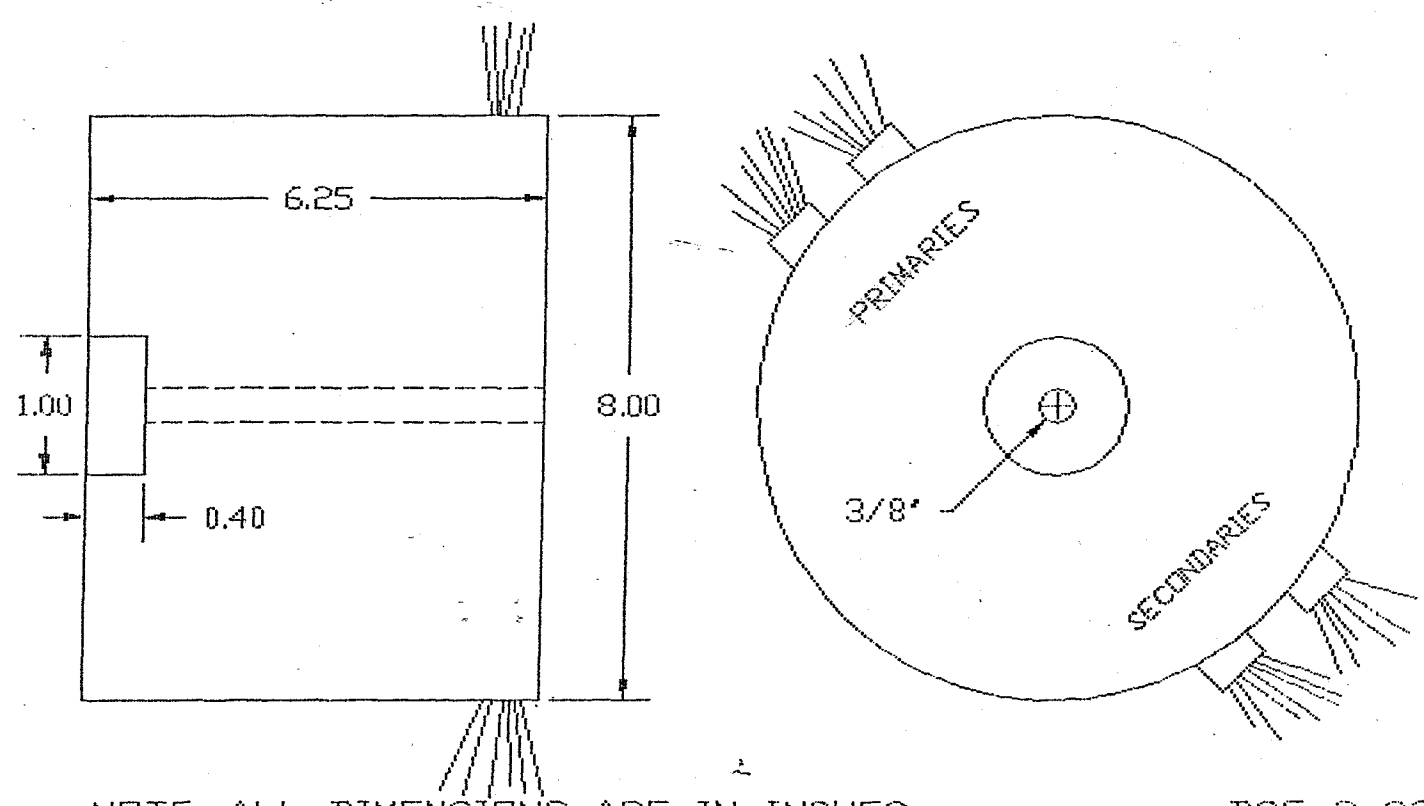
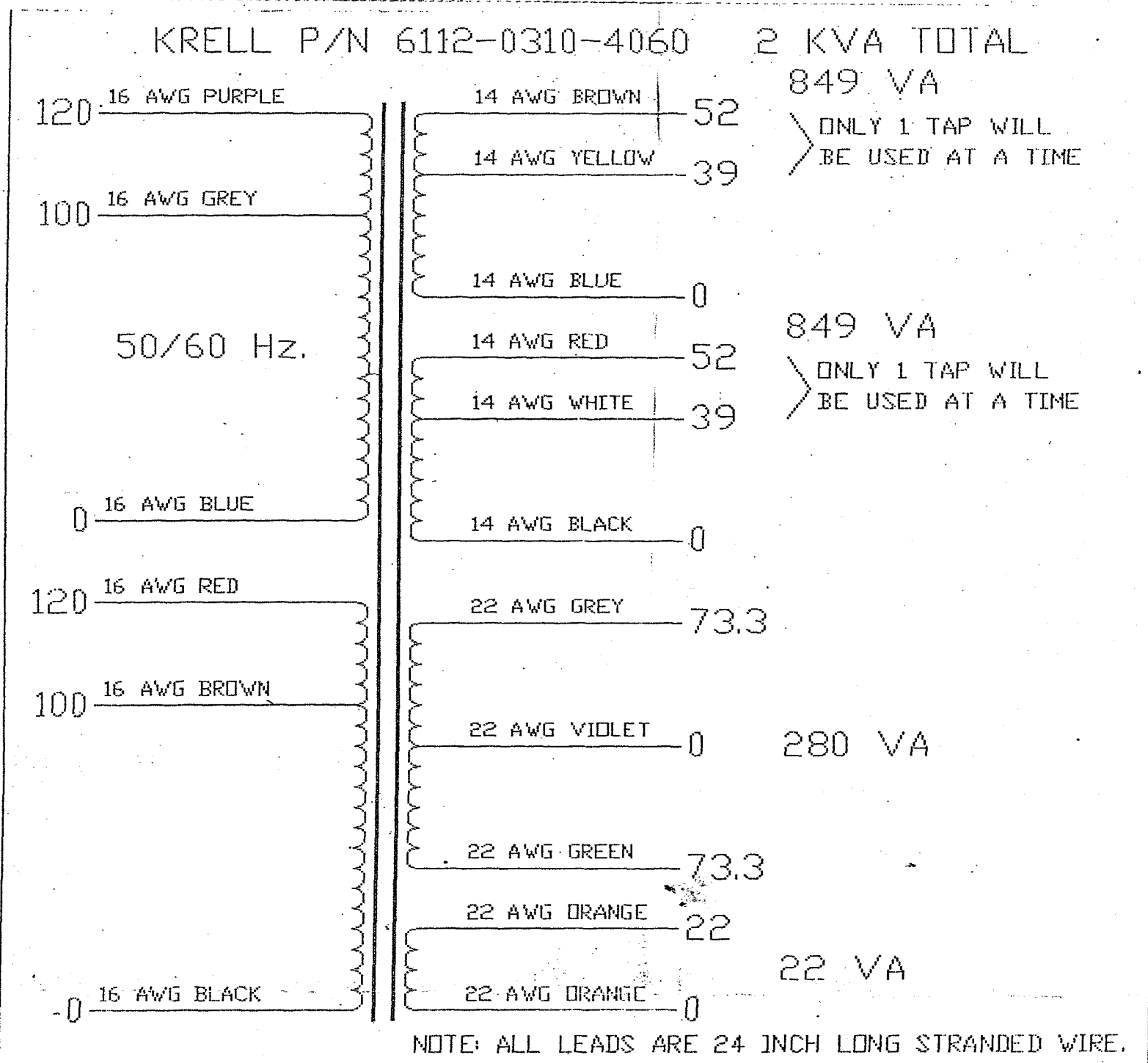
KRC-2 PREAMP = V2.3

KRC-3 PREAMP = TBD

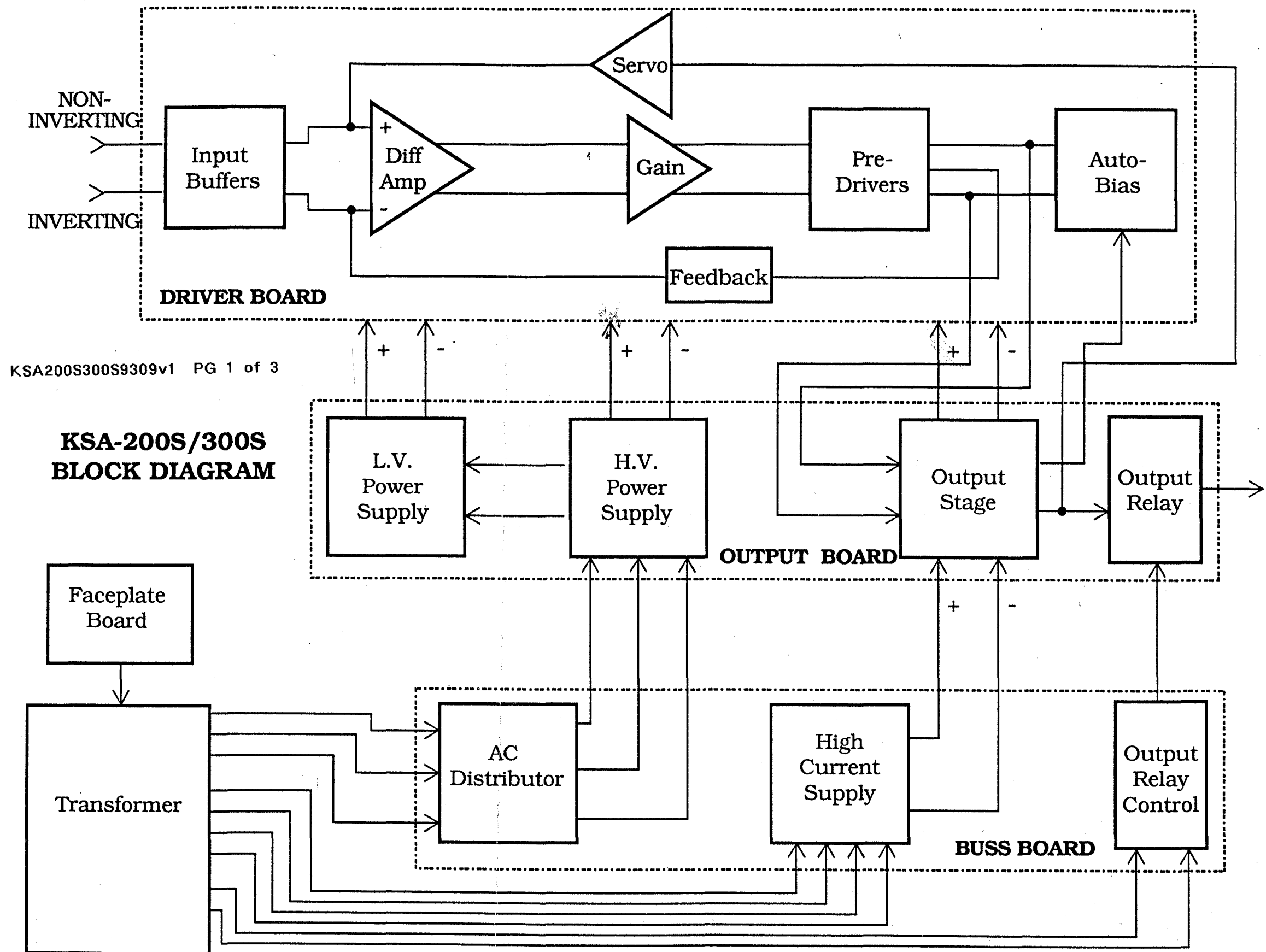
APPROVED BY:   
DATE: 5-19-95

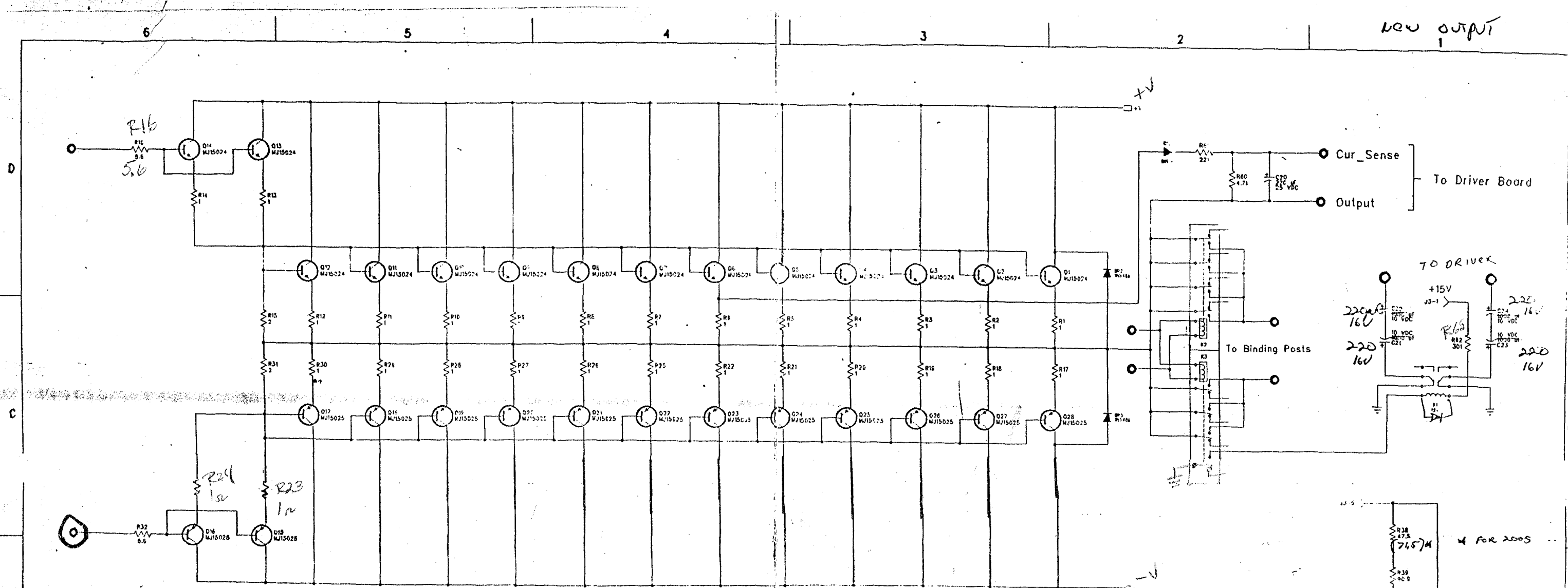
2005

NTE

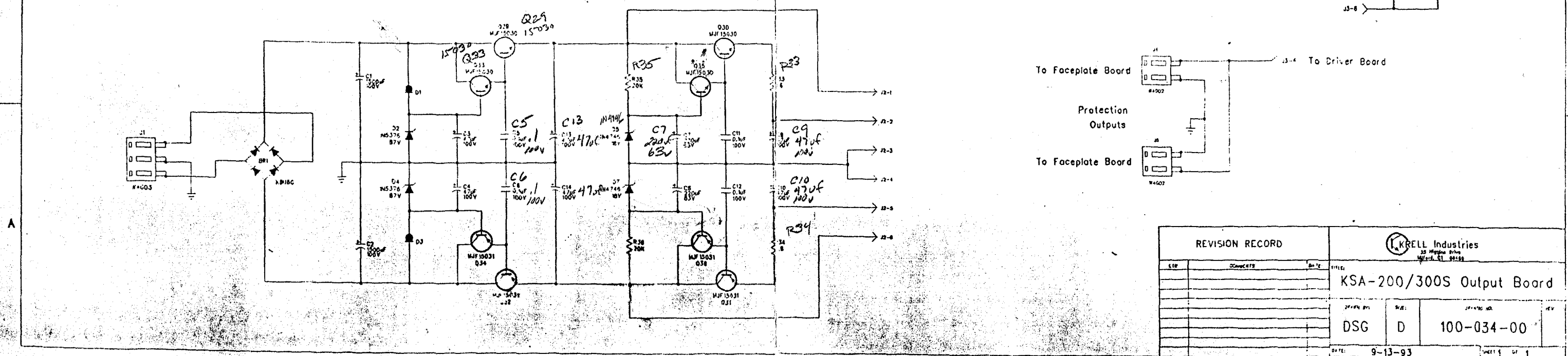


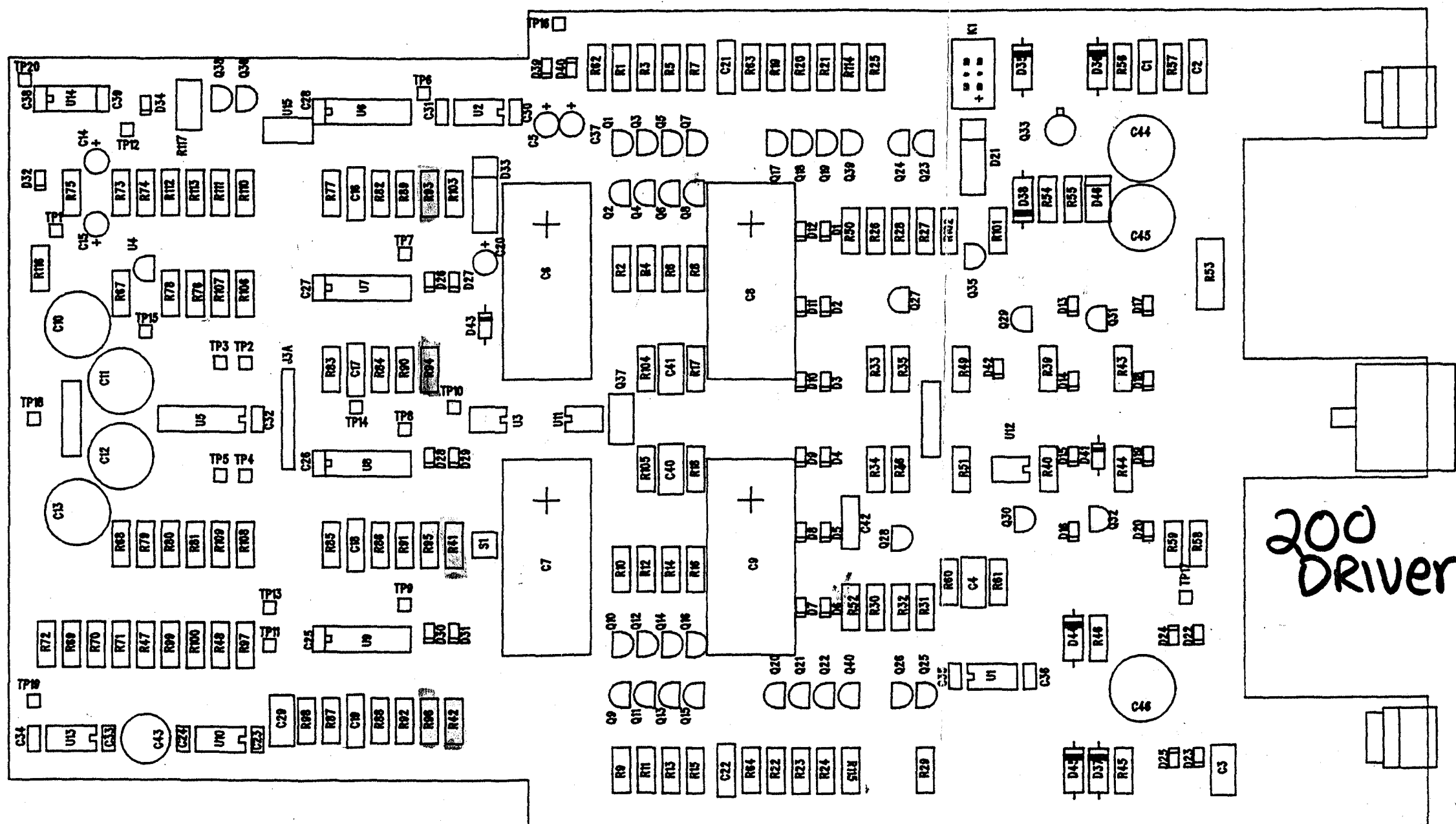
NOTE: ALL DIMENSIONS ARE IN INCHES.      DSG 3-22-93





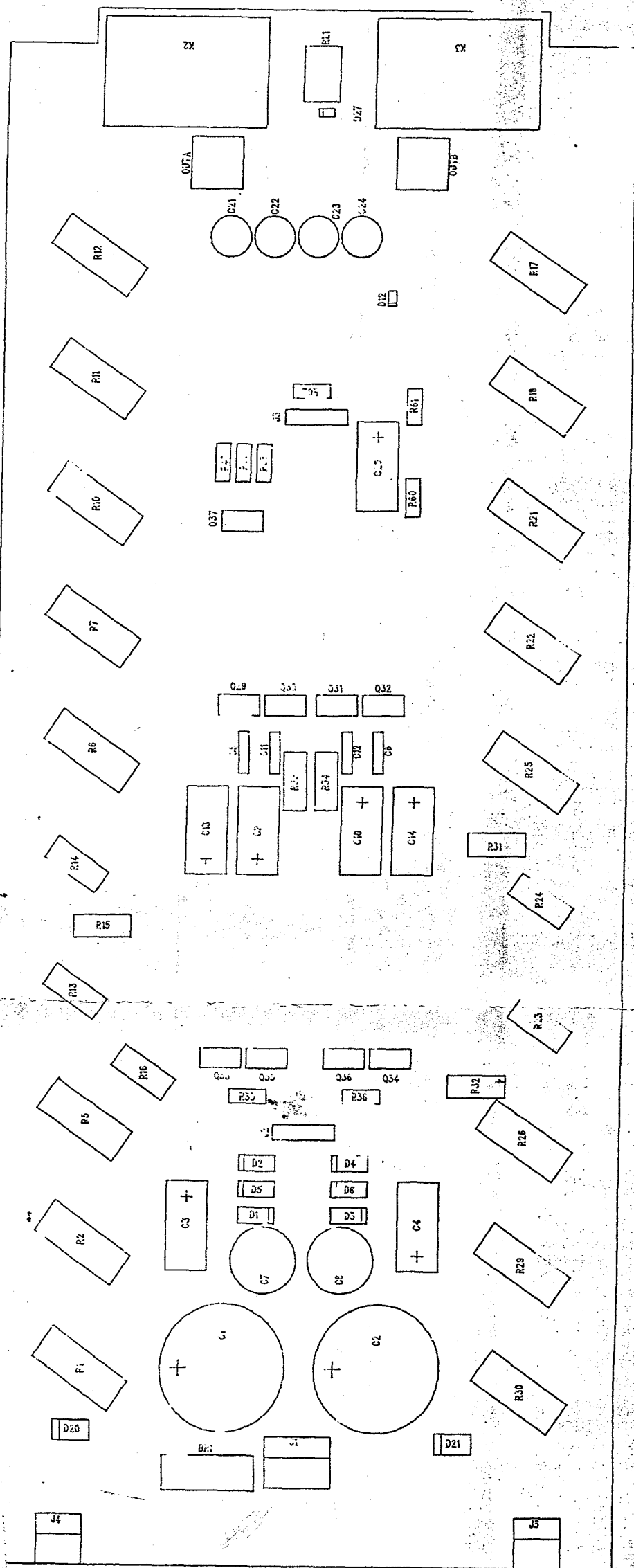
Note: KSA-200S has eight pairs of output devices.



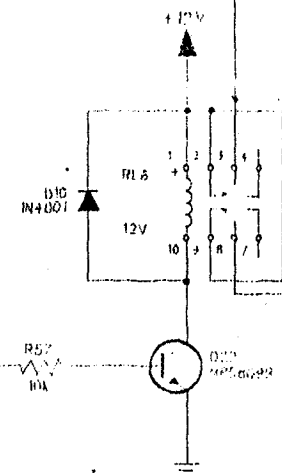
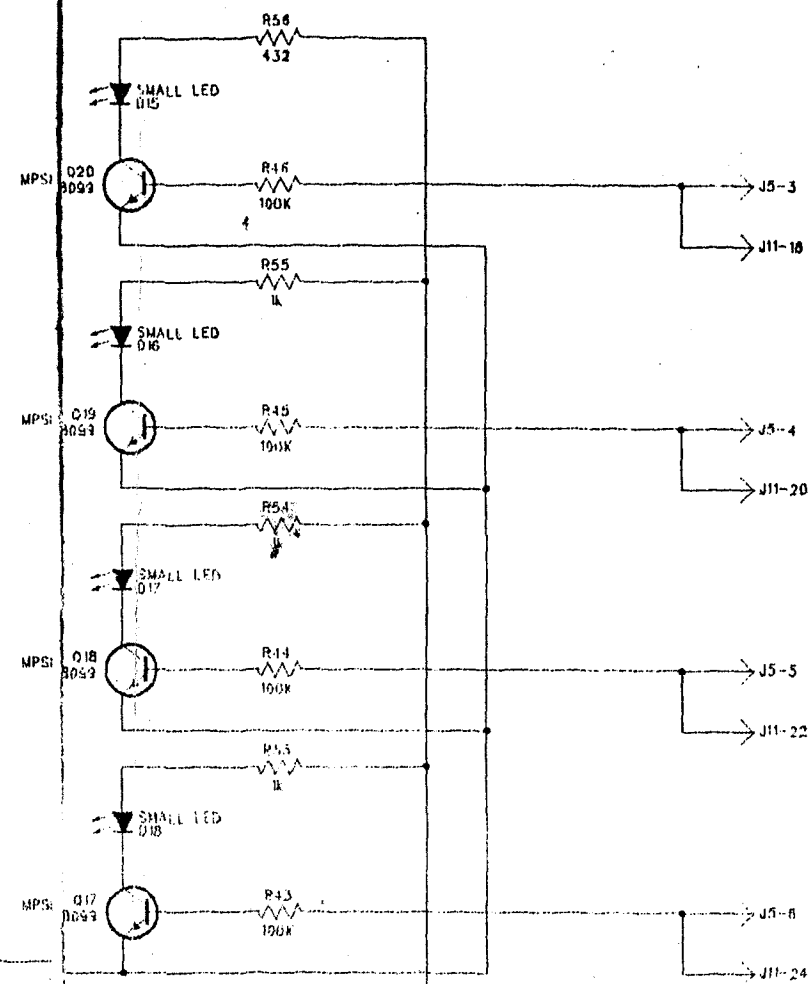
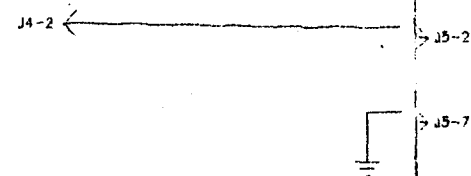
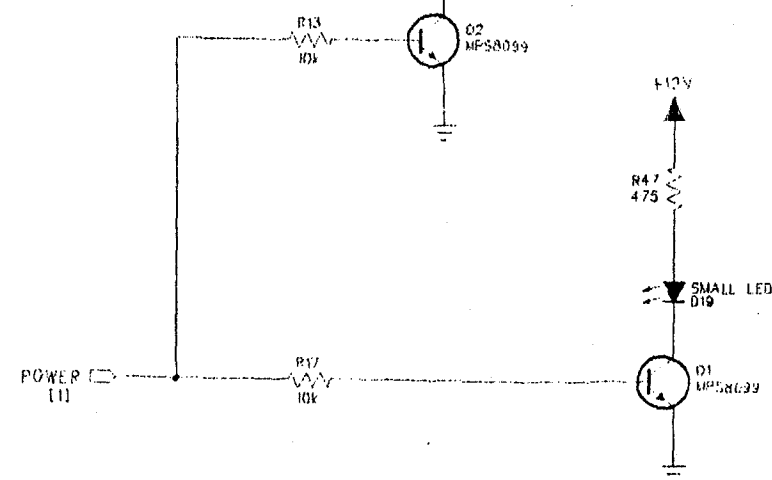
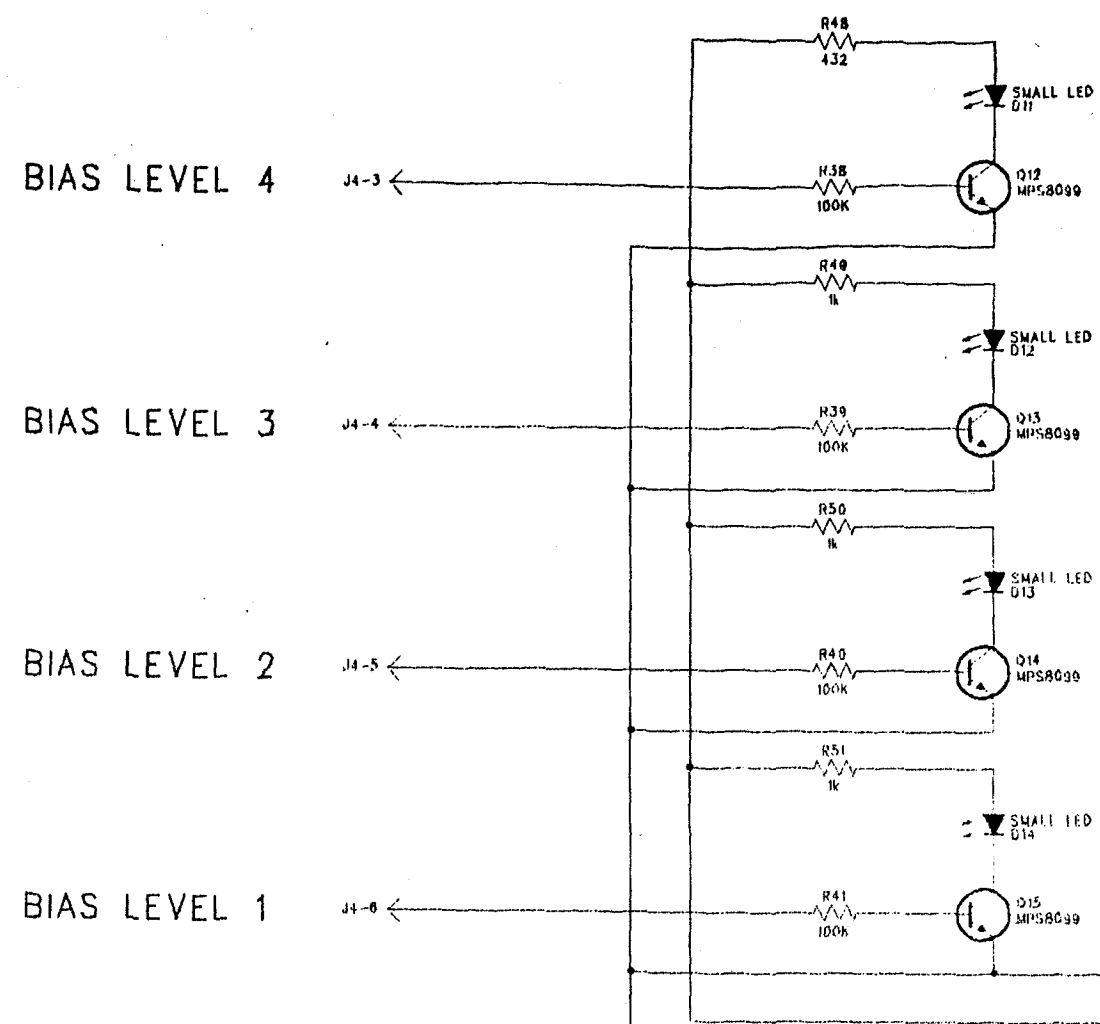




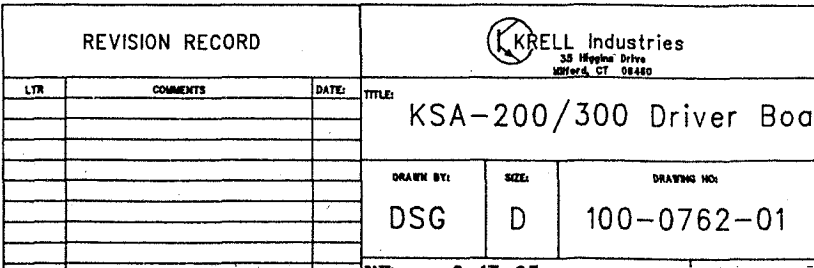








| Revision Record |  |
|-----------------|--|
| G               |  |
| F               | Add R58, D8,10, voltage switches (Sheet 3) |
|                 | 29-SEP-94                                  |











140

P8

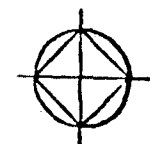
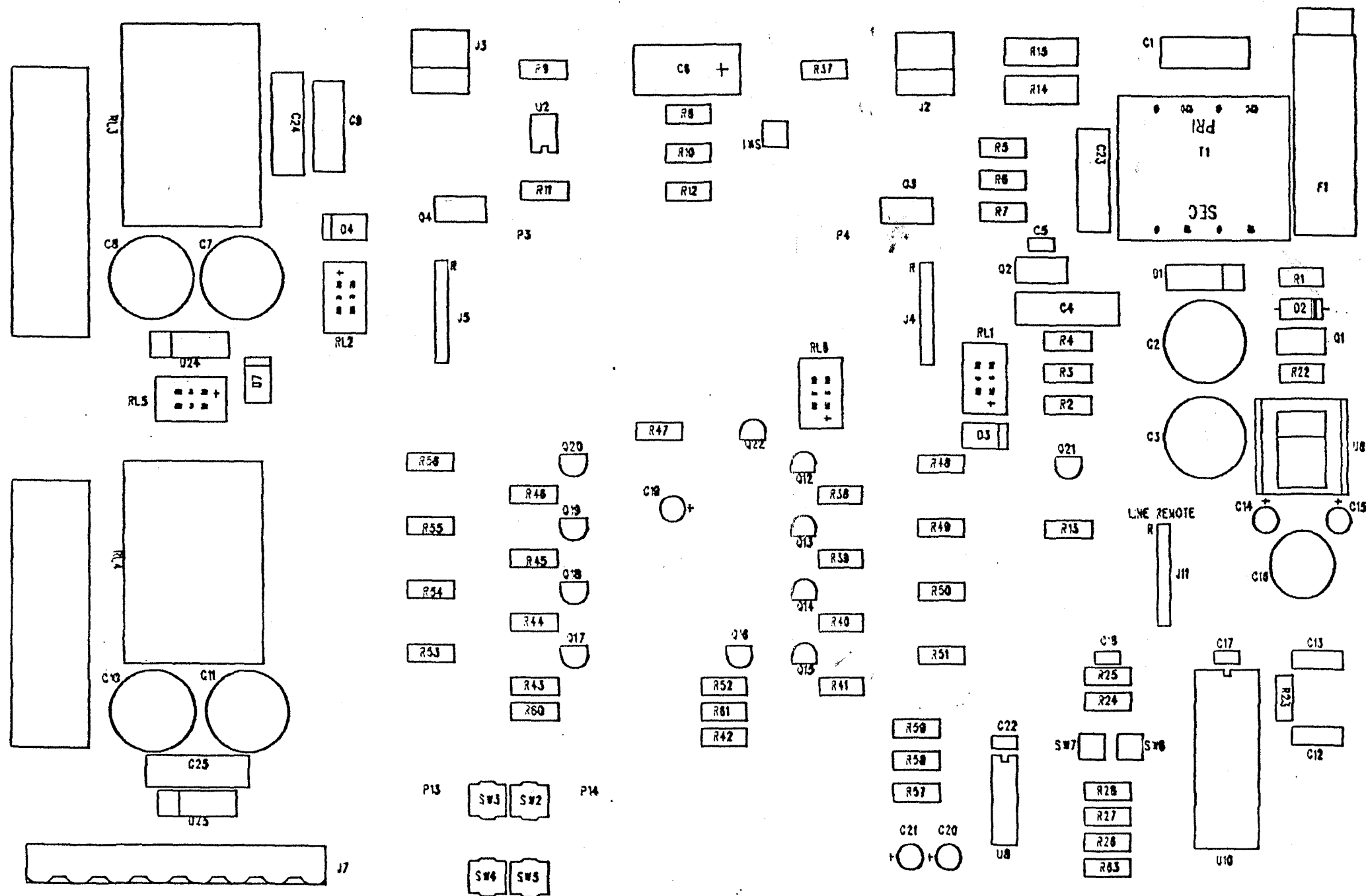
P9

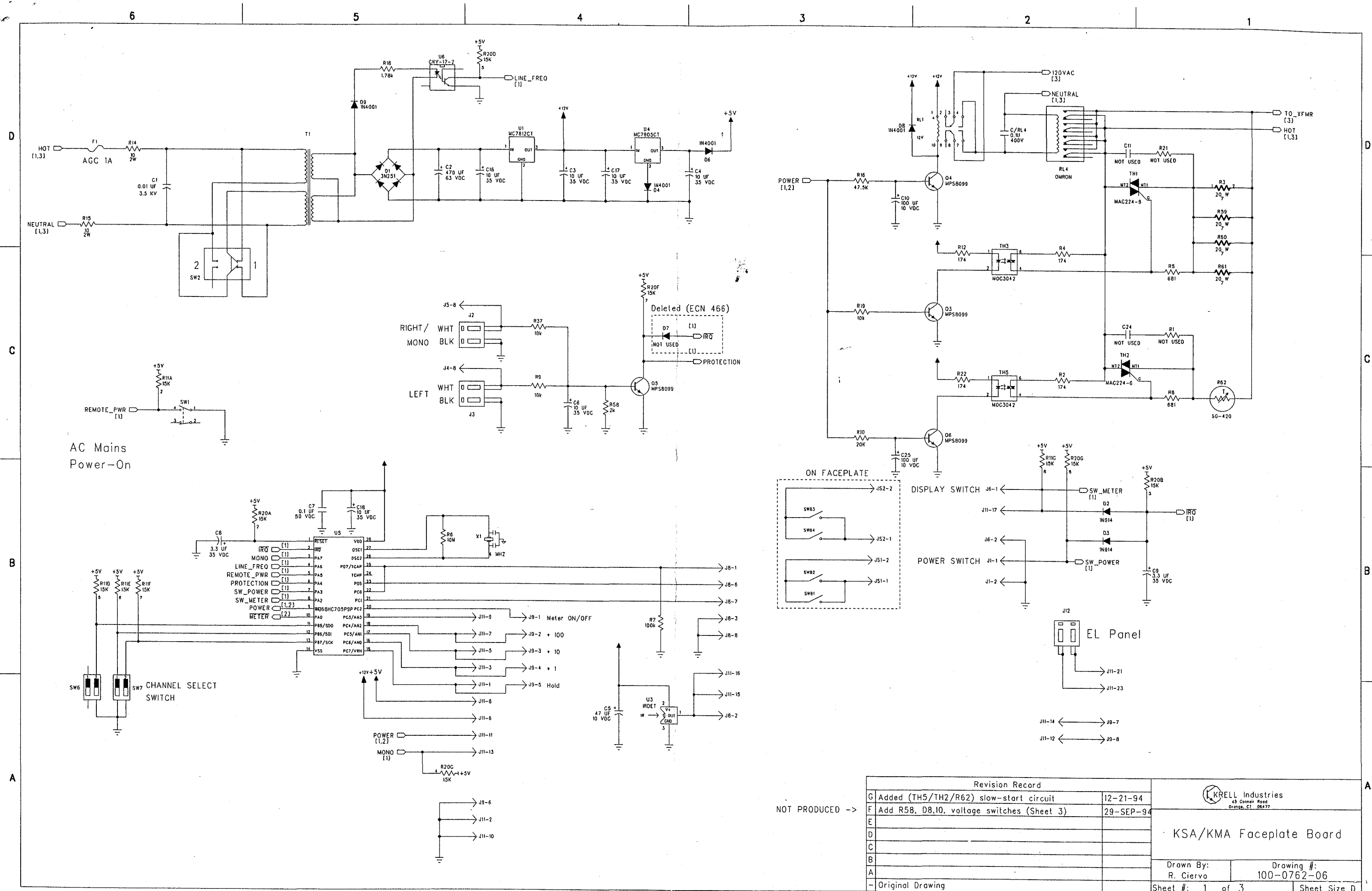
R10

12M

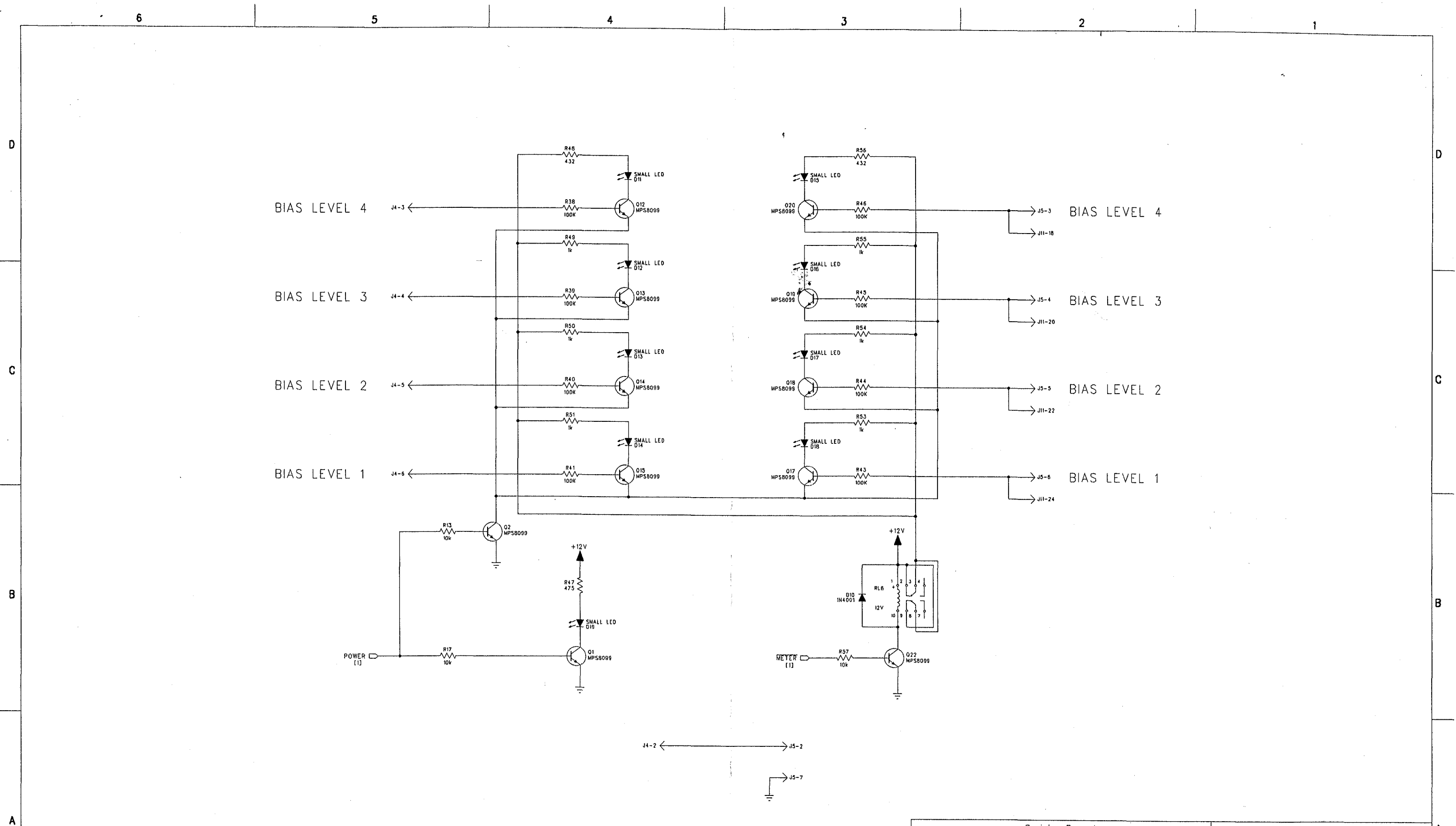
P7


P0





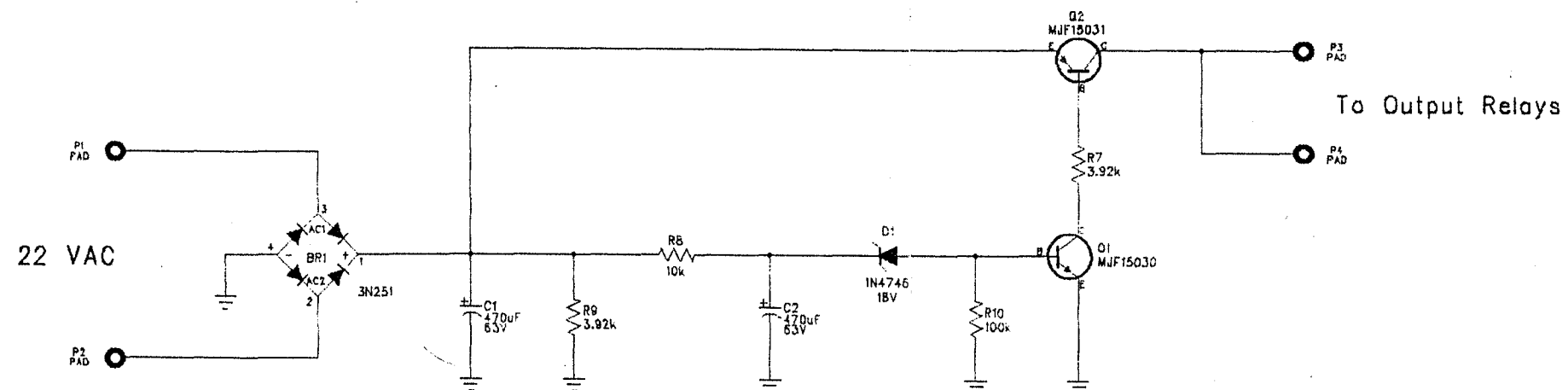





| Revision Record |  |  KRELL Industries<br>45 Connor Road<br>Orange, CT 06477 |              |
|-----------------|--|--|--------------|
|                 |  |  |              |
| G               | Added (TH5/TH2/R62) slow-start circuit     | 12-21-94   |              |
| F               | Add R58, D8,10, voltage switches (Sheet 3) | 29-SEP-94  |              |
| E               |  |  |              |
| D               |  |  |              |
| C               |  |  |              |
| B               |  |  |              |
| A               |  |  |              |
| -               | Original Drawing                           |  |              |
|                 |  | Sheet #: 2 of 3  | Sheet Size D |

KSA/KMA Faceplate Board

Drawn By: R. Ciervo  
Drawing #: 100-0762-06



| REVISION RECORD |          |       | <div>  <b>KRELL Industries</b><br/> <small>35 Higgins Drive<br/>Middletown, CT 06460</small> </div> |             |      |  |
|-----------------|----------|-------|--|-------------|------|--|
| LT#             | COMMENTS | DATE: | TITLE: <b>KSA-200/300S Output Relay Driver</b><br>(located on Russ board)  |             |      |  |
|                 |          |       |  |             |      |  |
|                 |          |       |  |             |      |  |
|                 |          |       |  |             |      |  |
|                 |          |       |  |             |      |  |
|                 |          |       |  |             |      |  |
|                 |          |       |  |             |      |  |
| DRAWN BY:       |          |       | SIZE:  | DRAWING NO: | REV: |  |
|                 |          |       | C  | 100-0762-03 |      |  |