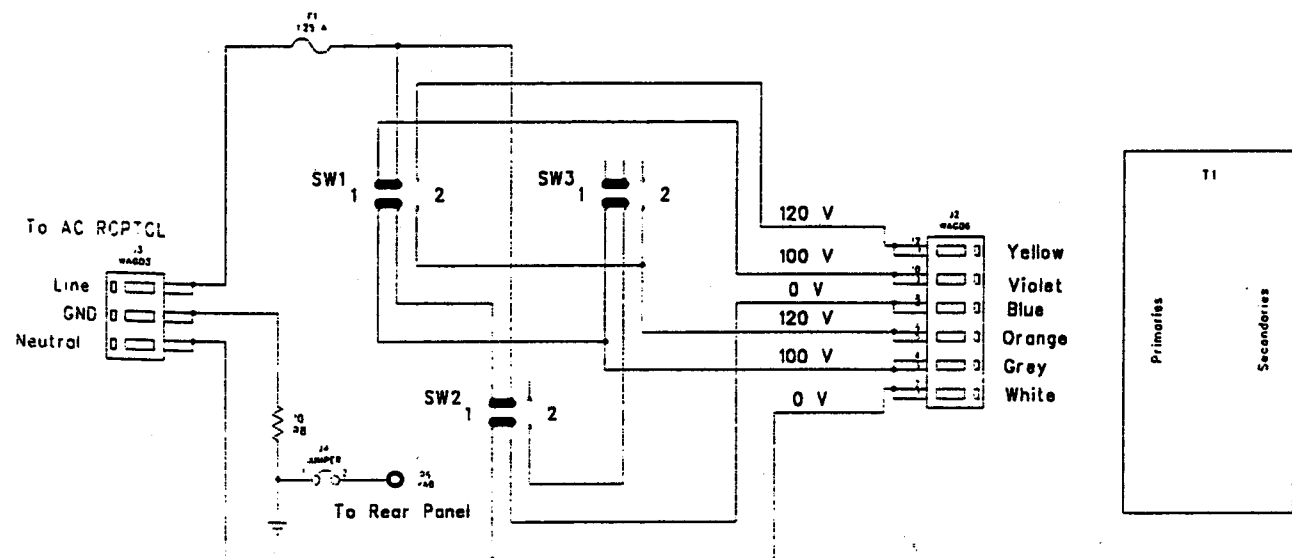


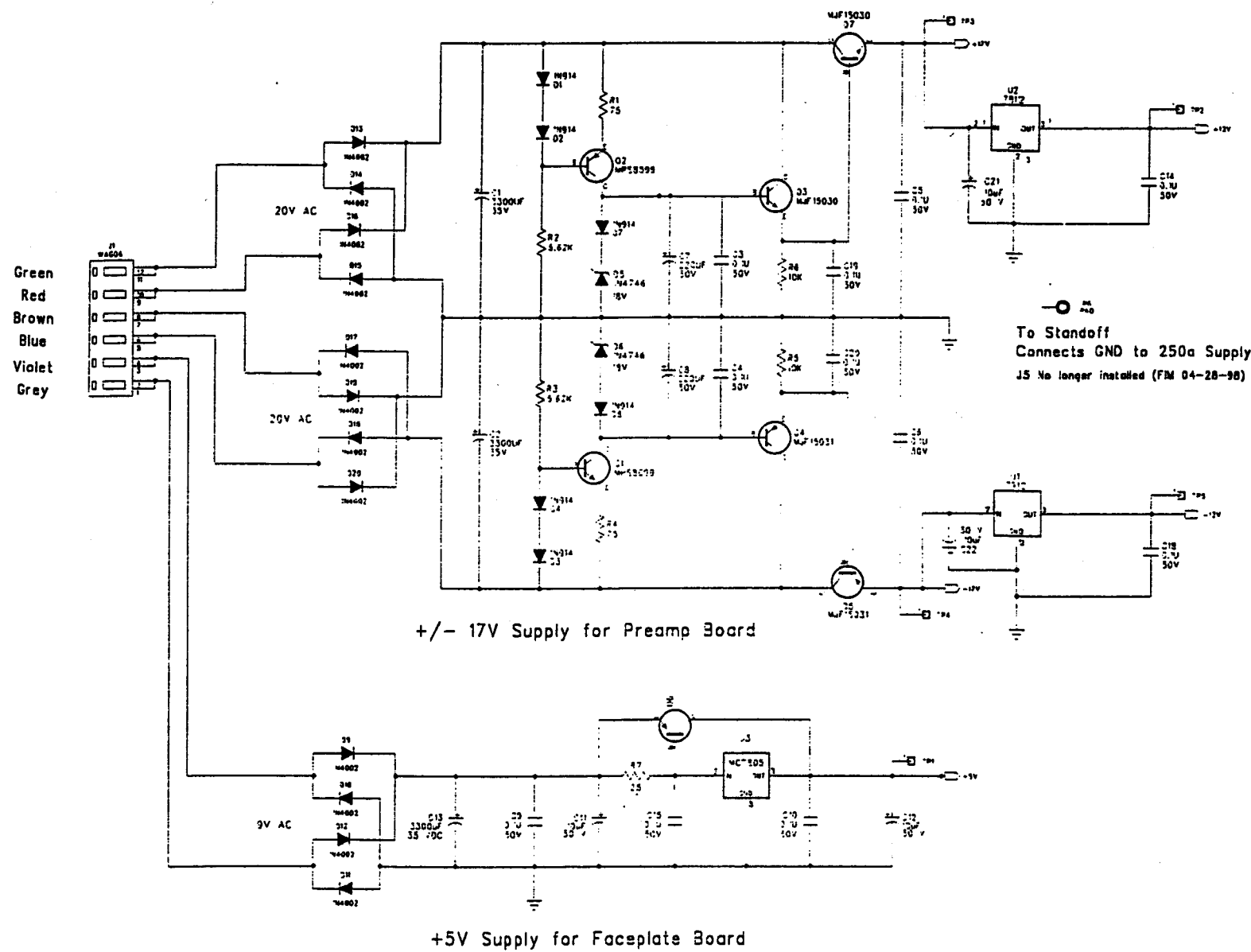
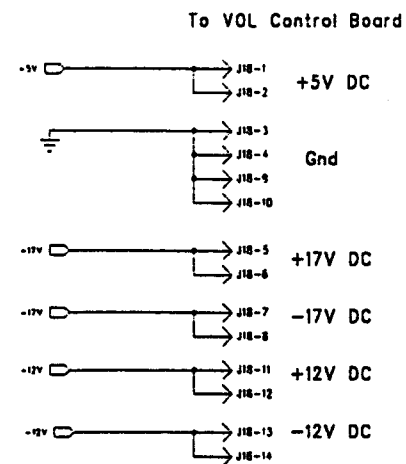


**KAV-500i Integrated Amplifier,
KAV-250a Stereo Amplifier &
KAV-250a/3 Three Channel Amplifier
Schematics**



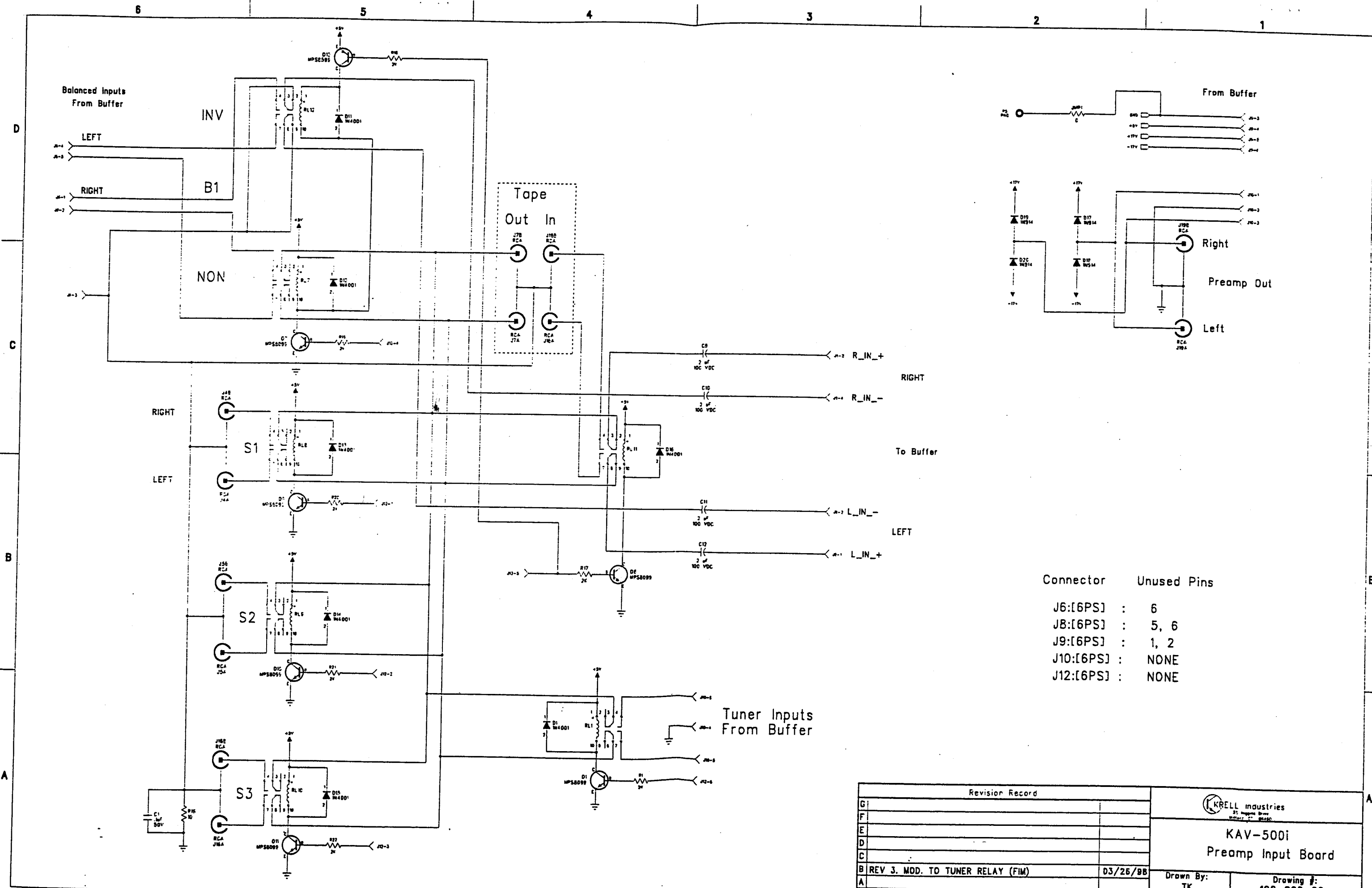


	SW1	SW2	SW3
100 V	1	1	-
120 V	2	1	-
200 V	1	2	1
220 V	1	2	2
240 V	2	2	2



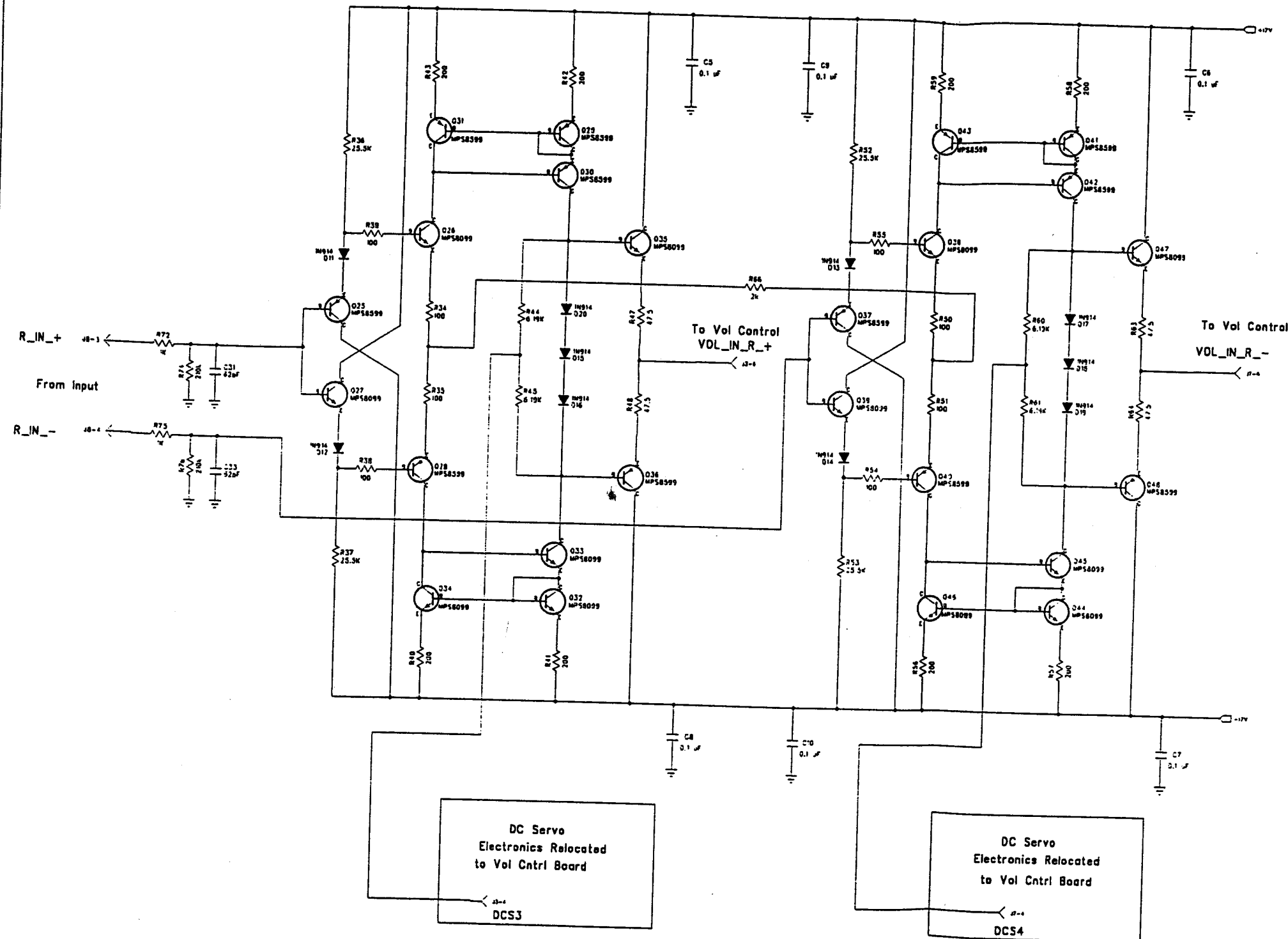
To Standoff
Connects GND to 250a Supply
J5 No longer installed (FIM 04-28-98)

REVISION RECORD			KRELL industries		
REV	DATE	COMMENTS	TITLE	DATE	REV
1	10-97	Component values and GND reworking	KAV-500i		
2	04-28-97	Deleted January 8, no longer installed	Faceplate and Preamp Power Supply		
3					
4					
5					
6					
7					
8					
9					
10					
11					
12					
13					
14					
15					
16					
17					
18					
19					
20					
21					
22					
23					
24					
25					
26					
27					
28					
29					
30					
31					
32					
33					
34					
35					
36					
37					
38					
39					
40					
41					
42					
43					
44					
45					
46					
47					
48					
49					
50					
51					
52					
53					
54					
55					
56					
57					
58					
59					
60					
61					
62					
63					
64					
65					
66					
67					
68					
69					
70					
71					
72					
73					
74					
75					
76					
77					
78					
79					
80					
81					
82					
83					
84					
85					
86					
87					
88					
89					
90					
91					
92					
93					
94					
95					
96					
97					
98					
99					
100					

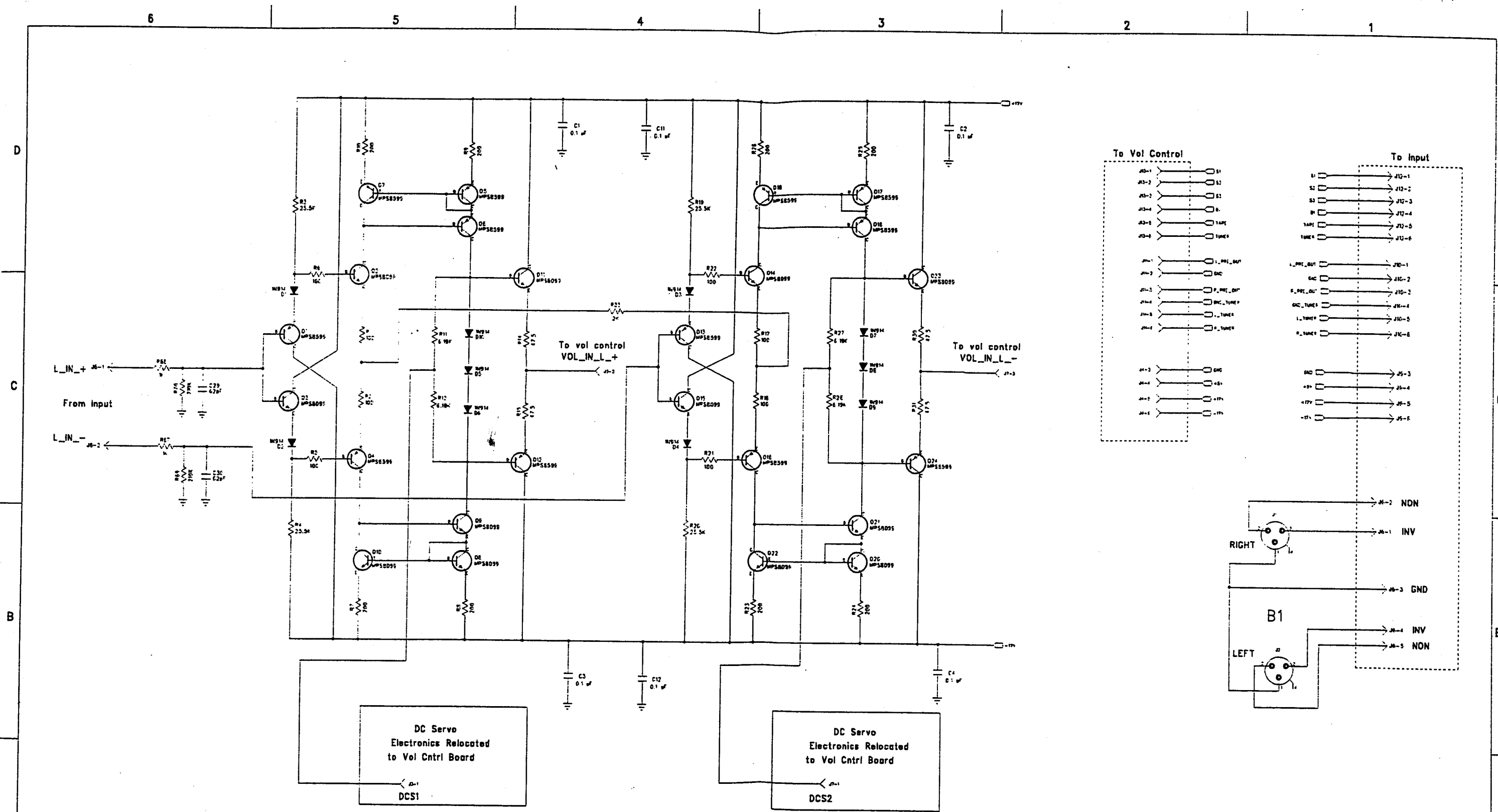


Connector	Unused Pins
J6:[6PS]	: 6
J8:[6PS]	: 5, 6
J9:[6PS]	: 1, 2
J10:[6PS]	: NONE
J12:[6PS]	: NONE

Revision Record		KRELL industries 31 Higgins Drive Malden, MA 02148	
G			
F		KAV-500i Preamp Input Board	
E			
D		Drawn By: TK Drawing #: 100-092-02	
C			
B	REV 3. MOD. TO TUNER RELAY (FIM)	03/26/95	Sheet #: 1 of 1 Sheet Size D
A	Original Drawing	4/11/97	



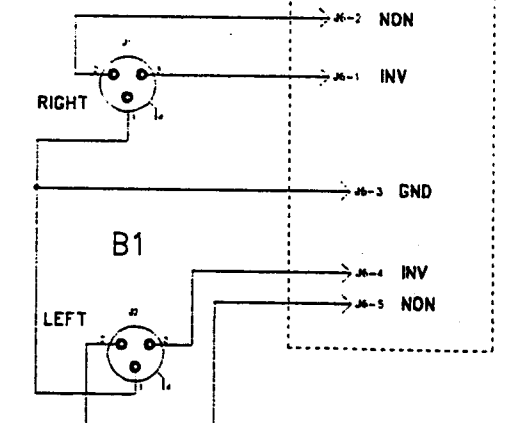
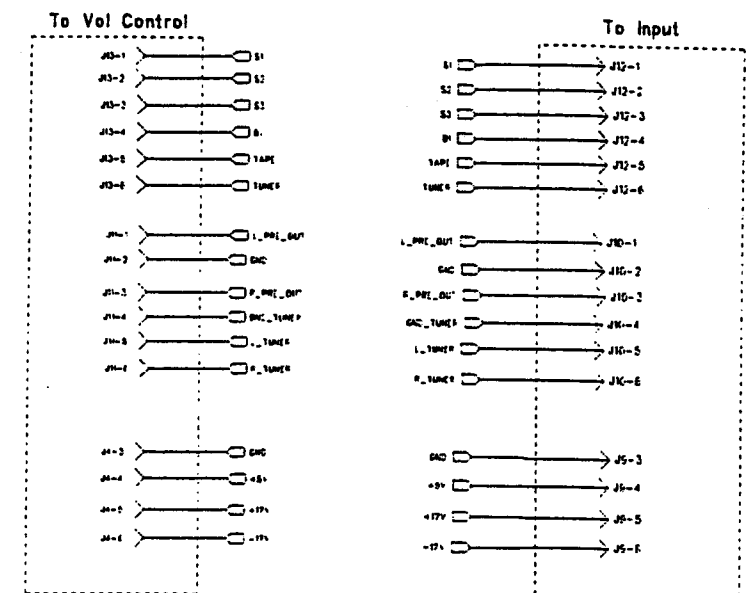
Revision Record		KRELL Industries	
G		400 Commonwealth Ave., Norwood, MA 02062	
F			
E			
D			
C			
B	REV 3 NO CHANGES TO SCH. ONLY TO PCB (FIM)	03/26/98	KAV-500i Preamp Input Buffer Right
A	REV 2	2/12/98	
-	Original Drawing	04/08/97	
		Drawn By: TK	Drawing #: 100-092-04
		Sheet #: 2 of 2	Sheet Size D



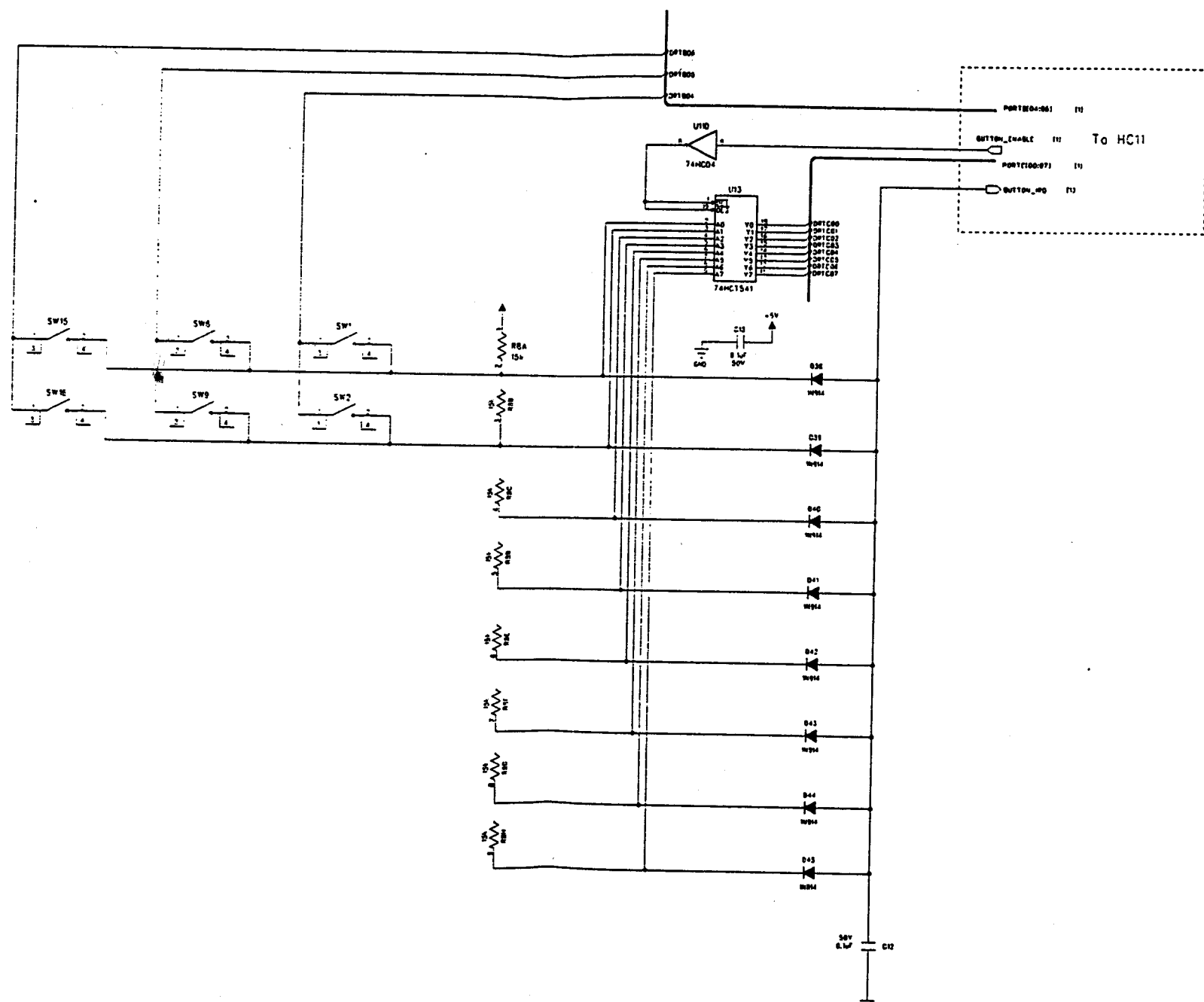
D
C
B
A

D
C
B
A

Note: The Forward Path for the DC Servo
is supplied by J7 header



Revision Record		KRELL Industries	
G		45 Canyon Road	
F		Beverly Hills, CA 90212	
E			
D			
C			
B	REV 3 NO CHANGES TO SCH. ONLY TO PCB (FIM)	03/26/98	KAV-500i Preamp Input Buffer Left Drawn By: TK Drawing #: 100-092-04 Sheet #: 1 of 2 Sheet Size D
A	REV 2	2/12/98	
-	Original Drawing	04/08/87	



REVISION RECORD			KRELL Industries 38 Hopping Drive Middletown, CT 06457			
LT#	COMMENTS	DATE	TITLE			
			KAV-500i			
			Button Selection Matrix			
			DRAWN BY:	SIZE	DRAWING NO.	REV
			TK	D	100-092-01	
			DATE 04-28-97			SHEET: 2 OF 2

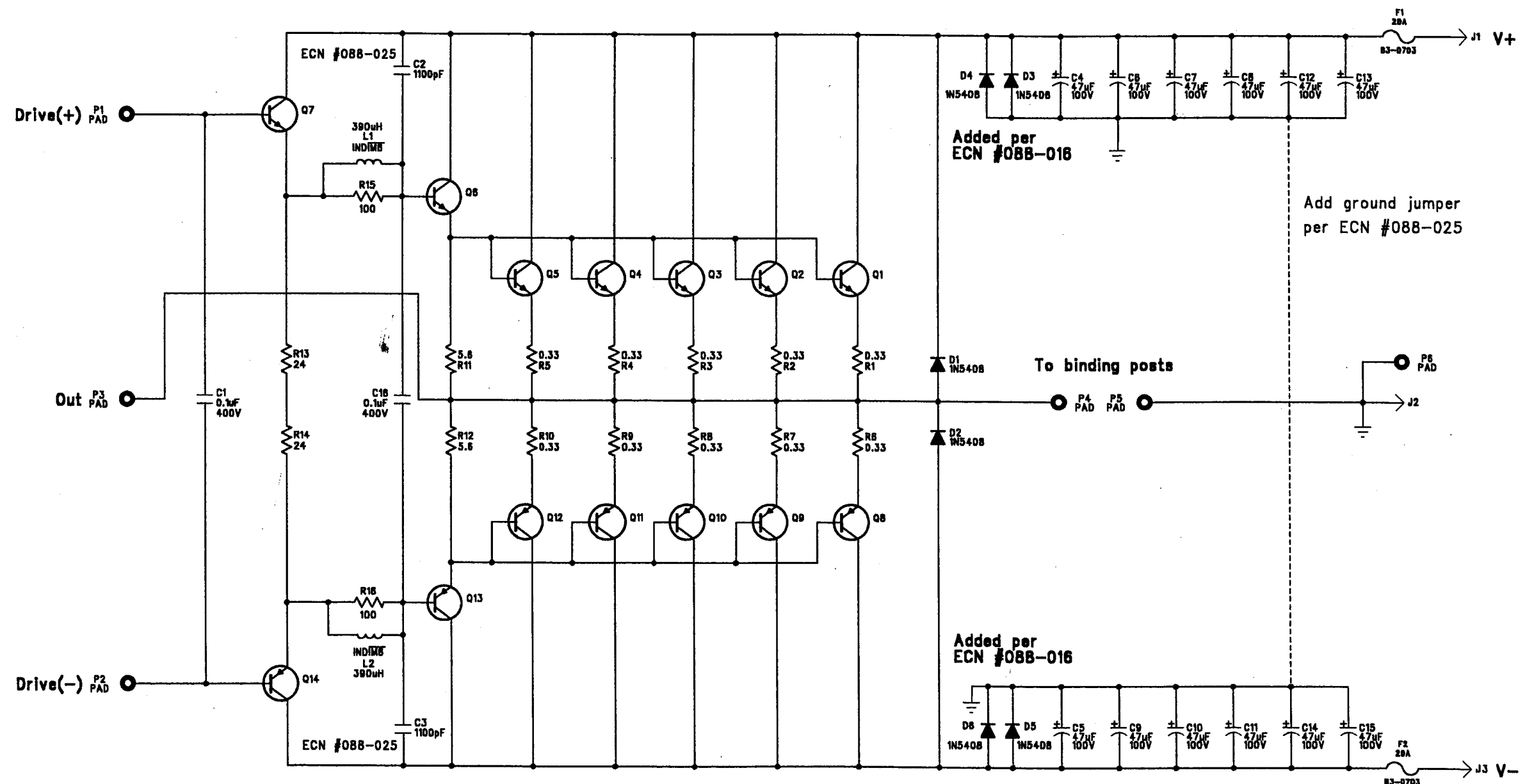
**Please use the following schematics
for units with Serial Numbers prior
to:**

KAV-250a 8899111706

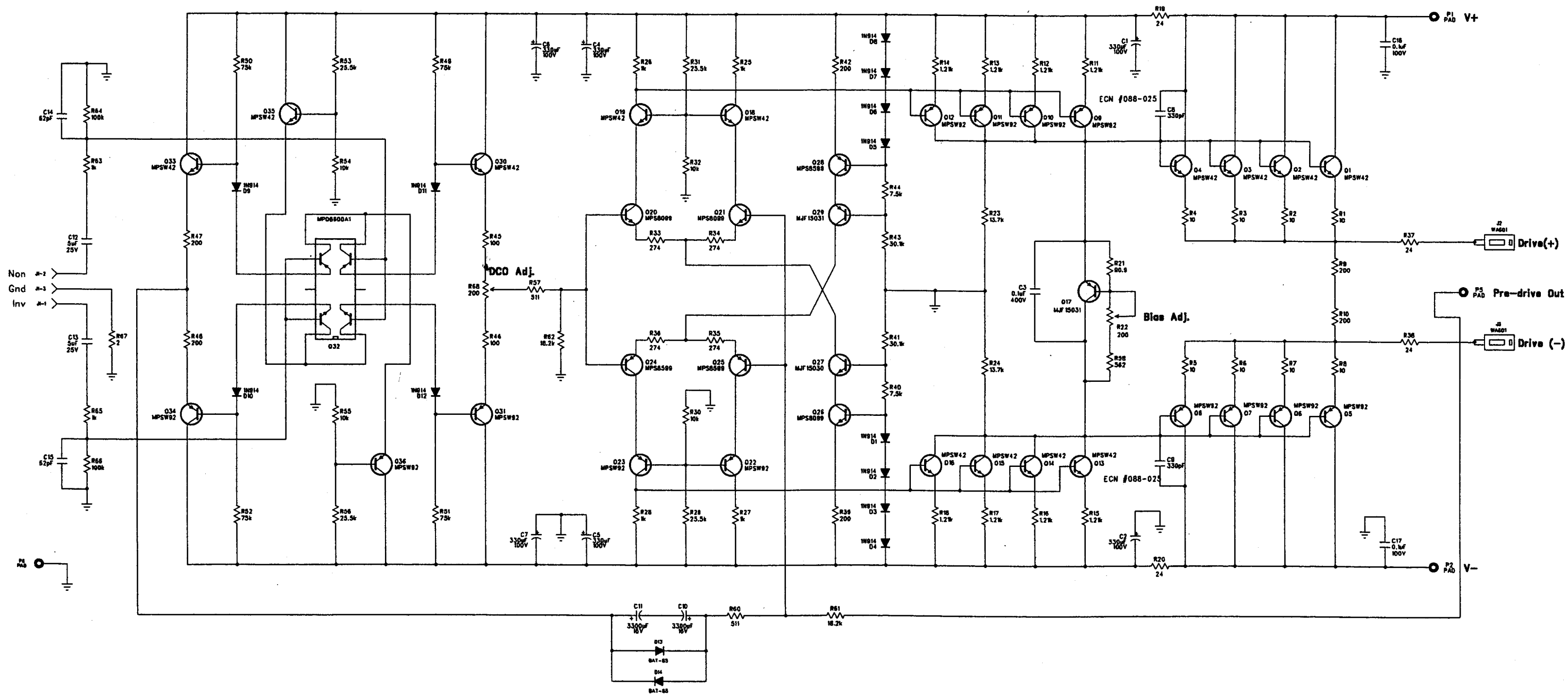
KAV-250a/3 10699110356

KAV-500i 9299100520

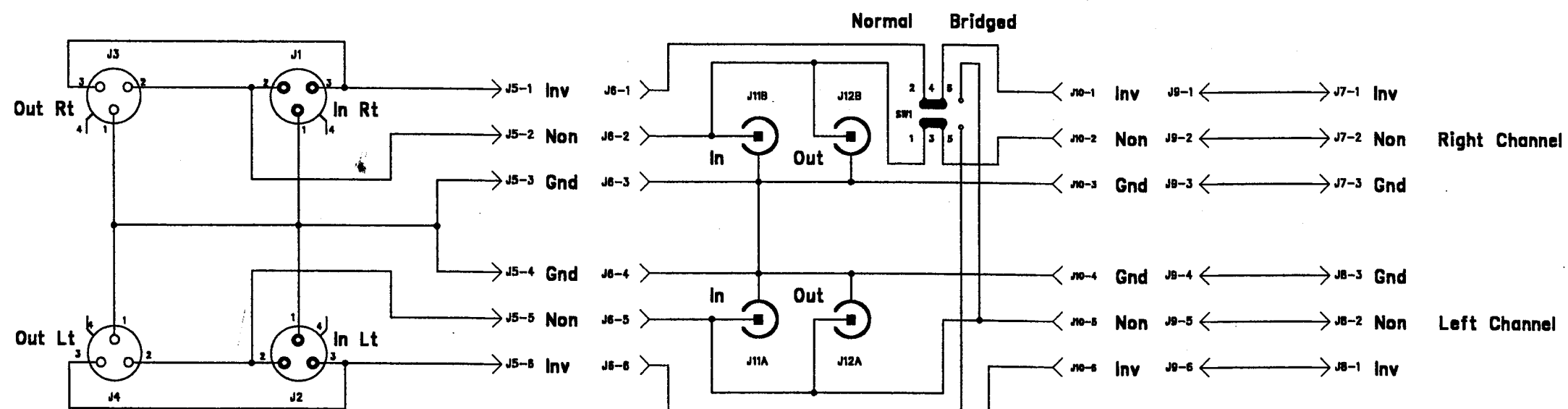
D
C
B
A



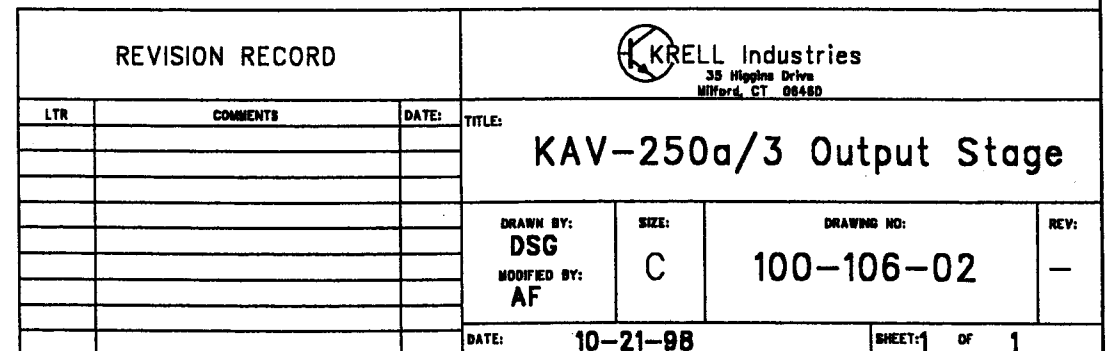
REVISION RECORD			<div>KRELL Industries</div> <div>35 Higgins Drive</div> <div>Milford, CT 06450</div>			
LTR	COMMENTS	DATE:	TITLE:			
			KAV-250 Output Stage			
			DRAWN BY:	SIZE:	DRAWING NO:	REV:
			DSG	C	100-088-02	A
			DATE: 11-5-96		SHEET: 1 OF 1	



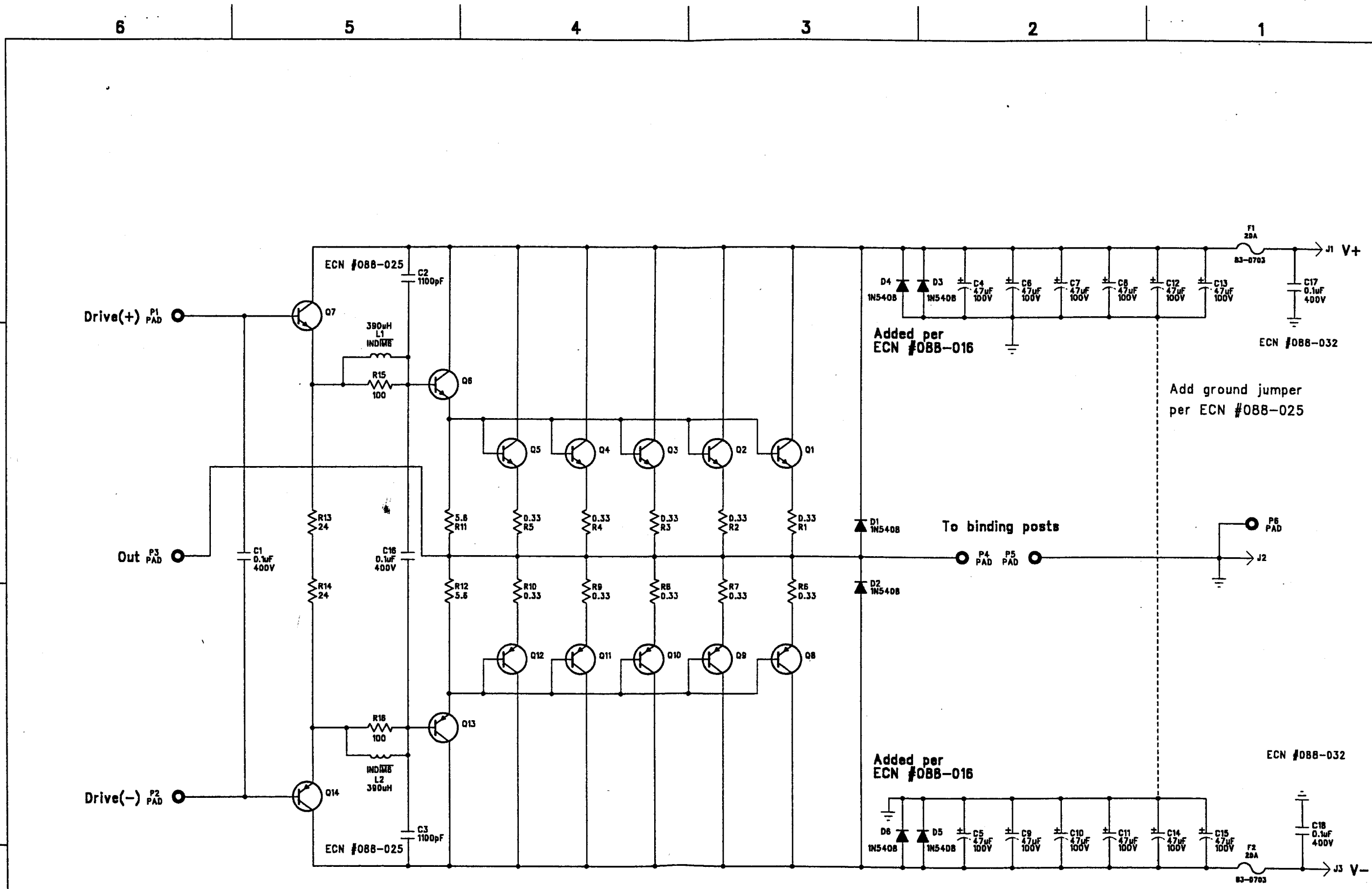
REVISION RECORD			KRELL Industries 35 Maple Drive Woburn, CT 06180	
LTN	COMMENTS	DATE	TITLE:	
A		12/96	KAV-250 Driver Stage	
			DRAWN BY:	REV:
			DSG	B
			SIZE: D	DRAWING NO: 100-088-03
			DATE: 11-6-96	SHEET: 1 of 1



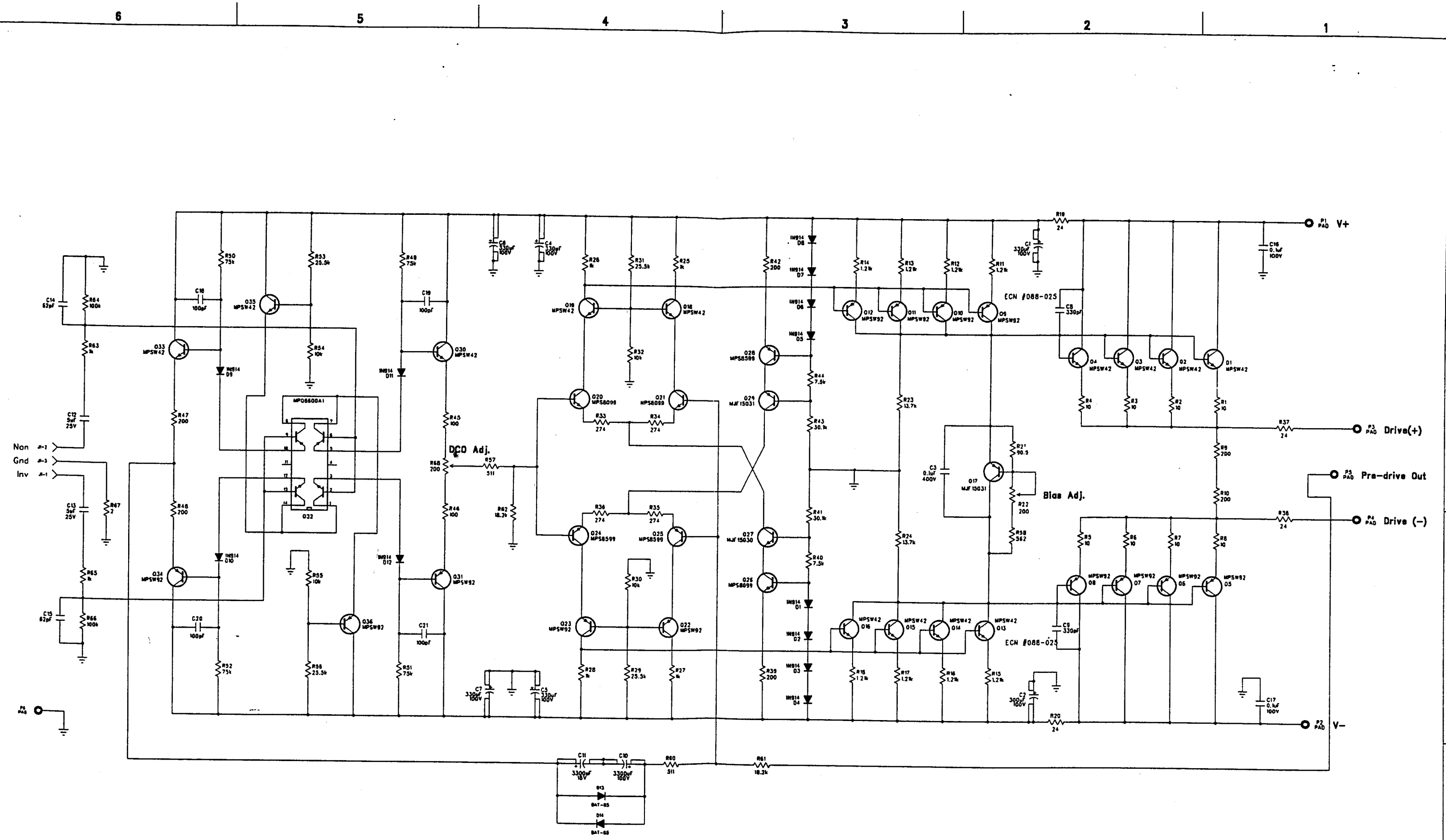
REVISION RECORD			KRELL Industries 35 Higgins Drive Milford, CT 06460			
LTR	COMMENTS	DATE	TITLE: KAV-250 Audio Inputs			
			DRAWN BY:	SIZE:	DRAWING NO:	REV:
			DSG	C	100-088-04	
			DATE: 11-7-96		SHEET OF 1	



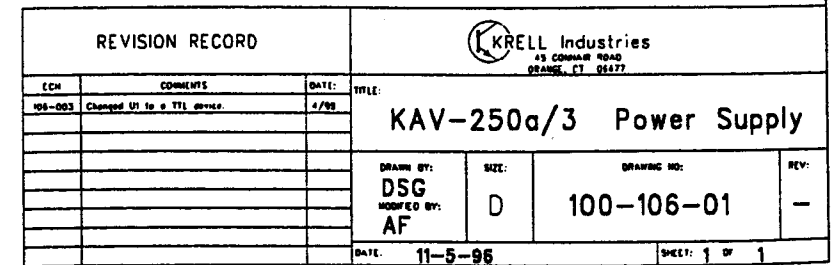
D
C
B
A




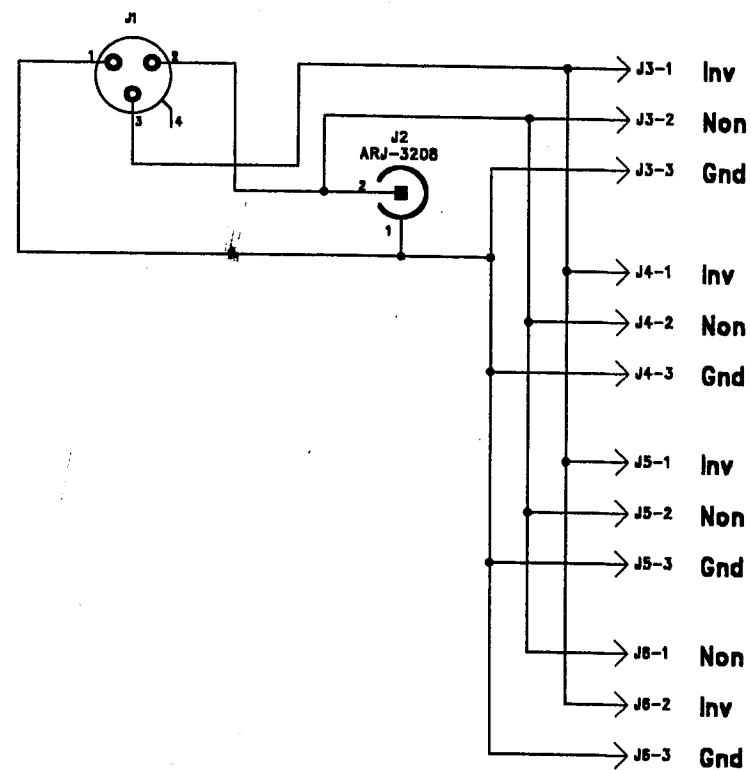
REVISION RECORD			<div>KRELL Industries</div> <div>35 Hiplane Drive</div> <div>Meriden, CT 06450</div>			
LTR	COMMENTS	DATE	TITLE:			
			KAV-250 Output Stage			
			DRAWN BY:	SIZE:	DRAWING NO:	REV:
			DSG	C	100-088-02	A
			DATE: 11-5-98		SHEET: 1 OF 1	



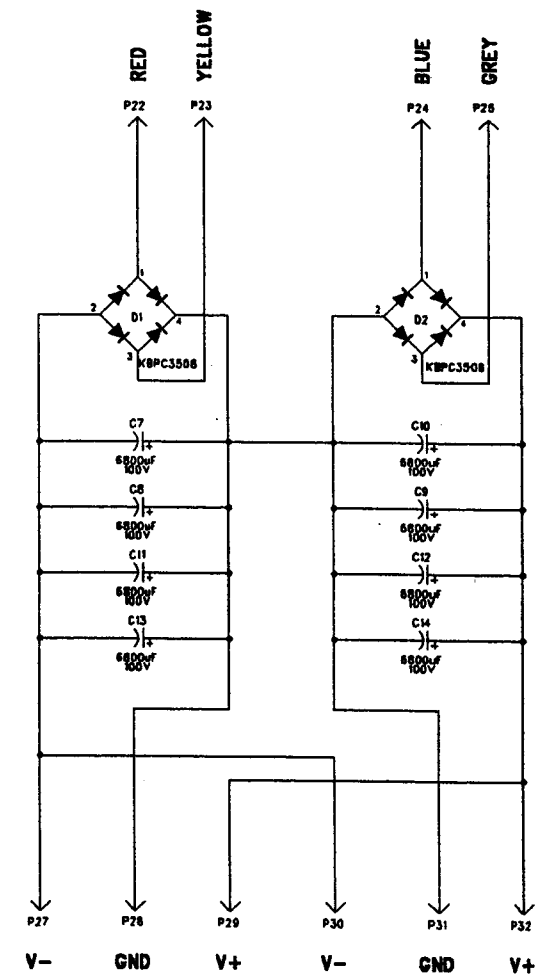
REVISION RECORD			KRELL Industries 35 Higgins Drive Middletown, CT 06450			
LTN	COMMENTS	DATE	TITLE			
			KAV-250a/3 Driver Stage			
			DRAWN BY:	DZE	DRAWING NO:	REV:
			DSG	D	100-106-03	-
			MODIFIED BY:			
			AF			
			DATE:	12-30-98	SHEET:	1 OF 1




REVISION RECORD			 KRELL Industries 45 CONNARD ROAD DEANSTOWN, CT 06427			
ECN	COMMENTS	DATE:	TITLE:			
106-003	Changed UI to a TTL device.	4/98	KAV-250a/3 Power Supply			



REVISION RECORD			KRELL Industries 35 Higgins Drive Milford, CT 06460			
LTR	COMMENTS	DATE	TITLE: KAV-250a/3 Audio Inputs			
			DRAWN BY:	SIZE:	DRAWING NO:	REV:
			AF	C	100-106-04	A
			DATE: 12-30-98		SHEET: 1	OF 1



REVISION RECORD			 KRELL Industries 33 Higgins Drive Milford, CT 06460	
LTR	COMMENTS	DATE:	TITLE:	
B	Added extra filter caps	2/97	KAV-250 Power Supply	
			DRAWN BY:	SIZE:
			DSG	D
			DRAWING NO:	
			100-088-01	
			REV:	
			DATE: 11-5-98	
			SHEET: 1 OF 1	