

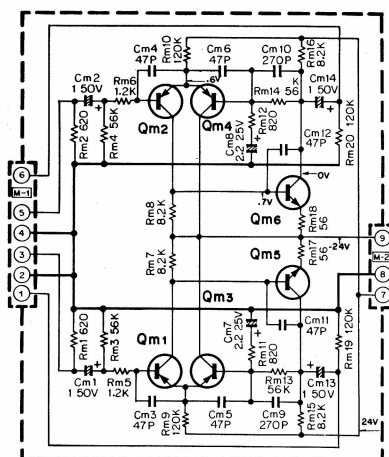
SPECIFICATIONS

Total Harmonic Distortion	0.04% at rated output voltage into 50 kΩ
Inter Modulation Distortion (60 Hz : 7 kHz = 4 : 1)	0.04% at rated output voltage into 50 kΩ
Input Sensitivity and Impedance	
Phono 1	2.5 mV, 50 K ohms 30 K ohms 600 ohms
Phono 2	2.5 mV, 50 K ohms 30 K ohms 600 ohms
Tuner	150 mV, 100 K ohms
AUX 1, 2, 3	150 mV, 100 K ohms
Tape Play A, B	150 mV, 100 K ohms
Mic	2.5 mV, 600 ohms
Maximum Input Voltage (rms)	
Phono 1, 2	400 mV T.H.D. 0.1% at 1,000 Hz
Signal to Noise Ratio (IHF)	
Phono 1, 2 into 5 mV	70 dB
Tuner	85 dB
AUX 1, 2, 3	85 dB
Tape Play A, B	85 dB
Mic	70 dB
Attenuator	0 dB -15 dB -30 dB
Output Voltage and Impedance	
Tape Rec. A, B (Pin)	150 mV 4.7 K ohms
(Din connector)	30 mV 80 K ohms
Pre-out A, B	1.5 V 600 ohms
Frequency Response	
Phono 1, 2	RIAA Standard Curve ±0.3 dB
Tuner, AUX, Tape Play	20 Hz ~ 20 kHz +0.3 dB -0.3 dB
Tone Controls	
Bass Turnover 200 Hz	±10 dB at 50 Hz
400 Hz	±10 dB at 100 Hz
Treble Turnover 3 kHz	±10 dB at 10,000 Hz
6 kHz	±10 dB at 20,000 Hz
Loudness Control (VR Max. -30 dB)	13.0 dB at 100 Hz
	26.0 dB at 10,000 Hz
Low Filter 36 Hz	12 dB/oct
18 Hz	12 dB/oct
High Filter 7 kHz	6 dB/oct
12 kHz	6 dB/oct
Phones Out	Max. 0.4V 20 mW 8 ohms

GENERAL

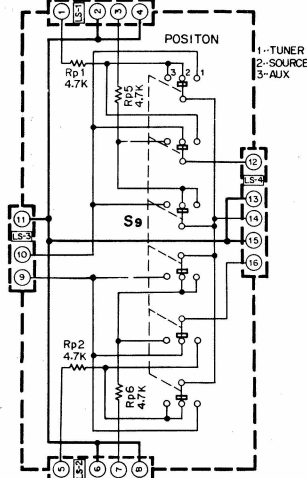
Switches	
Input Selector	MIC, Phono 1, 2, Aux. 1, 2, 3, Tuner
Mode	R, L, REV, STEREO, L + R, L Only, R Only
Tape Monitor	SOURCE, A PLAY, B PLAY, DUBBING (A→B) B MON, DUBBING (A→B) SOURCE, DUBBING (B→A)
AC Outlet	Switched 2, Unswitched 1
Power Consumption	10 watts
Dimensions	W 17-5/16" (440mm), H 5-11/16" (145mm), D 11-13/16" (300mm)
Weight	20.9 lbs. (9.5 kg)

MIC AMP BLOCK (X08-1260-00)

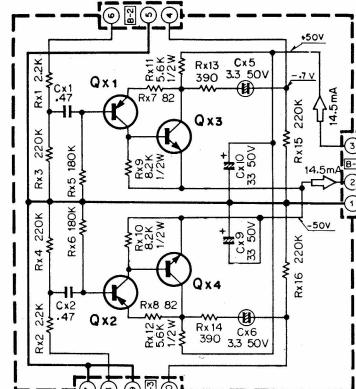


Qm1-4 : 2SA620 WL (4) or (5)
Qm5,6 : 2SC1416A (GR) or (BL)

LEVER SELECTOR BLOCK (X13-1860-10)

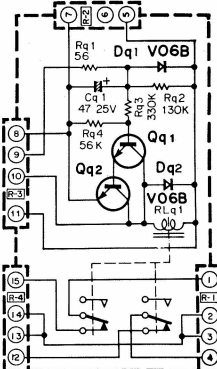


BUFF AMP BLOCK (X13-1700-00)



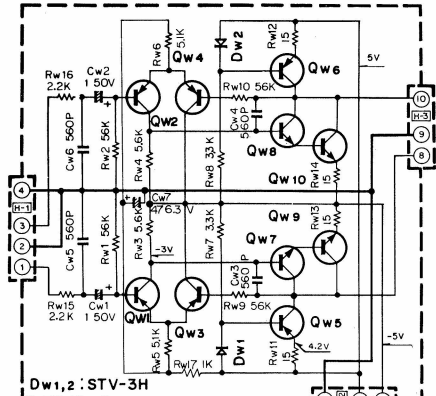
Qx1,2 : 2SA620 WLH (4) or (5)
Qx3,4 : 2SC1451 (V)

RELAY BLOCK (X13-1870-10)



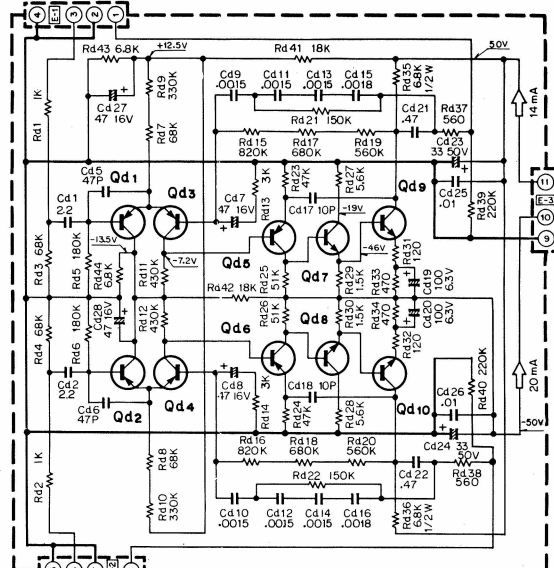
Qq1 : 2SC1416 (GR)
Qq2 : 2SD220

HEADPHONE BLOCK (X13-1690-00)



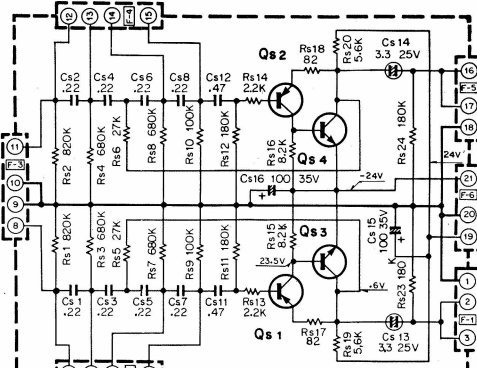
Dw1,2 : STV-3H
Qw1-4 : 2SA620 WL (4) or (5)
Qw5,6 : 2SA673A
Qw7,8 : 2SC945 P.O.R.
Qw9,10 : 2SC1213A

EQ AMP BLOCK (X08-1240-00)



Qd1-6 : 2SA620 WL (5)
Qd7,8 : 2SC1416 (GR) or (BL)
Qd9,10 : 2SC1451 (V)

LOW FILTER BLOCK (X12-1070-00)

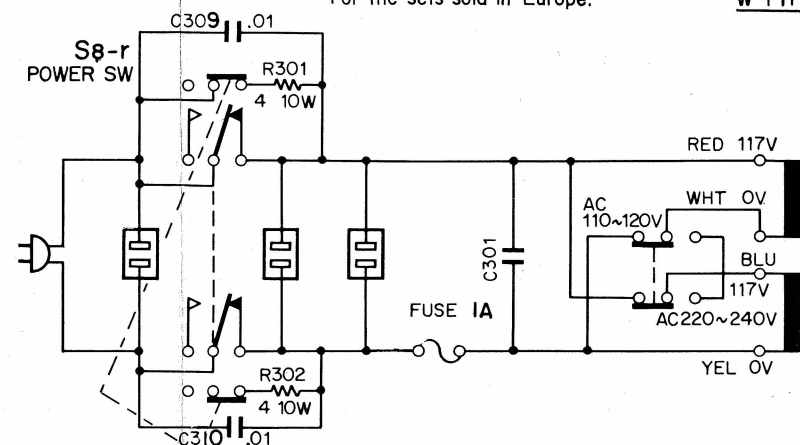


Qs1,2 : 2SA620 WL (4) or (5)
Qs3,4 : 2SC1416A (GR) or (BL)

REVISED CIRCUITS

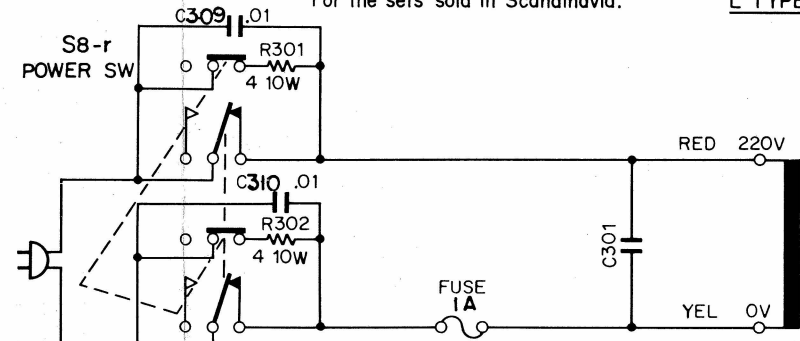
For the sets sold in Europe.

W TYPE



For the sets sold in Scandinavia.

L TYPE



For the sets sold in PX, and areas except designated

U,M TYPE

