

# REF-41MKII



## SPECIFICATIONS

### ACOUSTIC & ELECTRICAL SPECIFICATIONS:

- \* Nominal Impedance: 6 ohm
- \* Recommended Amp Power: 10-125W
- \* Frequency Response: 40 Hz - 25 kHz (-6dB)
- \* Sensitivity: 90 dB / 2,83V / 1 m
- \* Crossover frequency: 600 Hz-4 kHz

### SYSTEM COMPONENTS:

- \* Cabinet: CREF-41 MKII (Not for sale)
- \* Grille: GREF-41 MKII (2408160)
- \* Midrange: W70410-1 100mm Midrange Paper
- \* Woofer: W70410-3 210mm Woofer Coated Paper

### SYSTEM COMPONENTS: (cont'd)

- \* Tweeter: TW010IY Gold 10mm  
Gold Plated Polymer dome tweeter
- \* Crossover Network: NREF-41MKII (2708350)

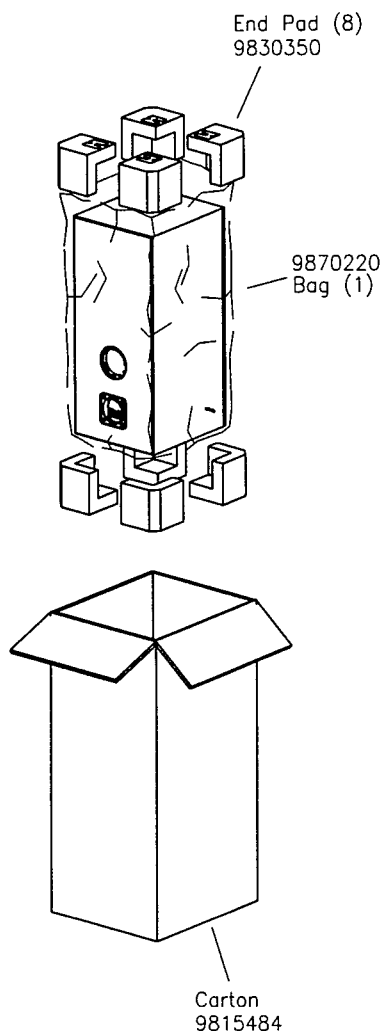
### PHYSICAL SPECIFICATIONS:

- \* Enclosure Dimensions (H.W.D): 22,8x10x12,1 In. D  
(579,5x253,5x307mm D)
- \* Shipping Weight: 32 lbs. 14,5 kg.)

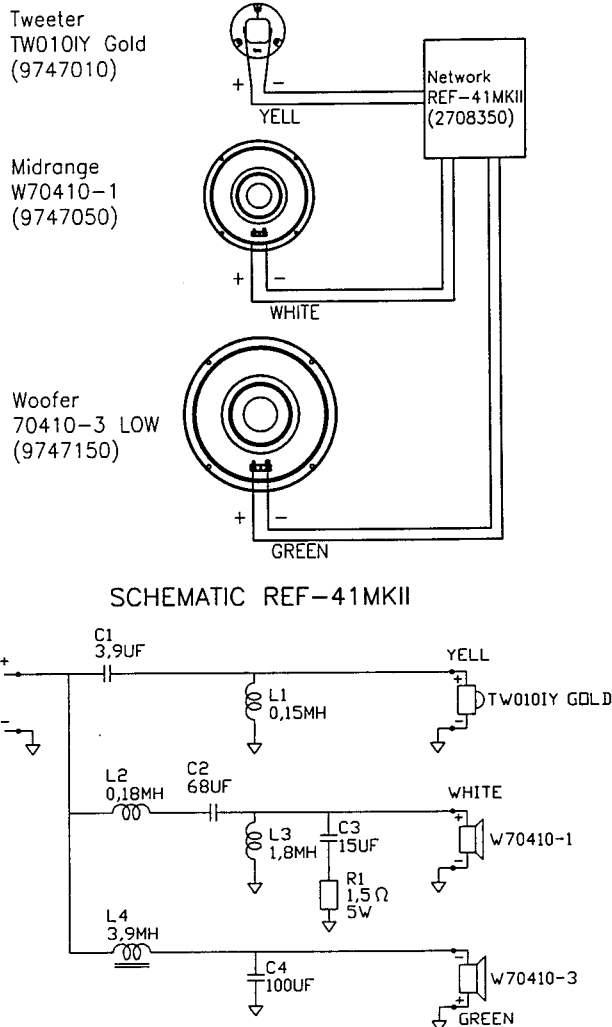
### WARRANTY INFORMATION:

- \* Refer to the Warranty Statement packed with each product

## PACKAGE



## WIRING DIAGRAM

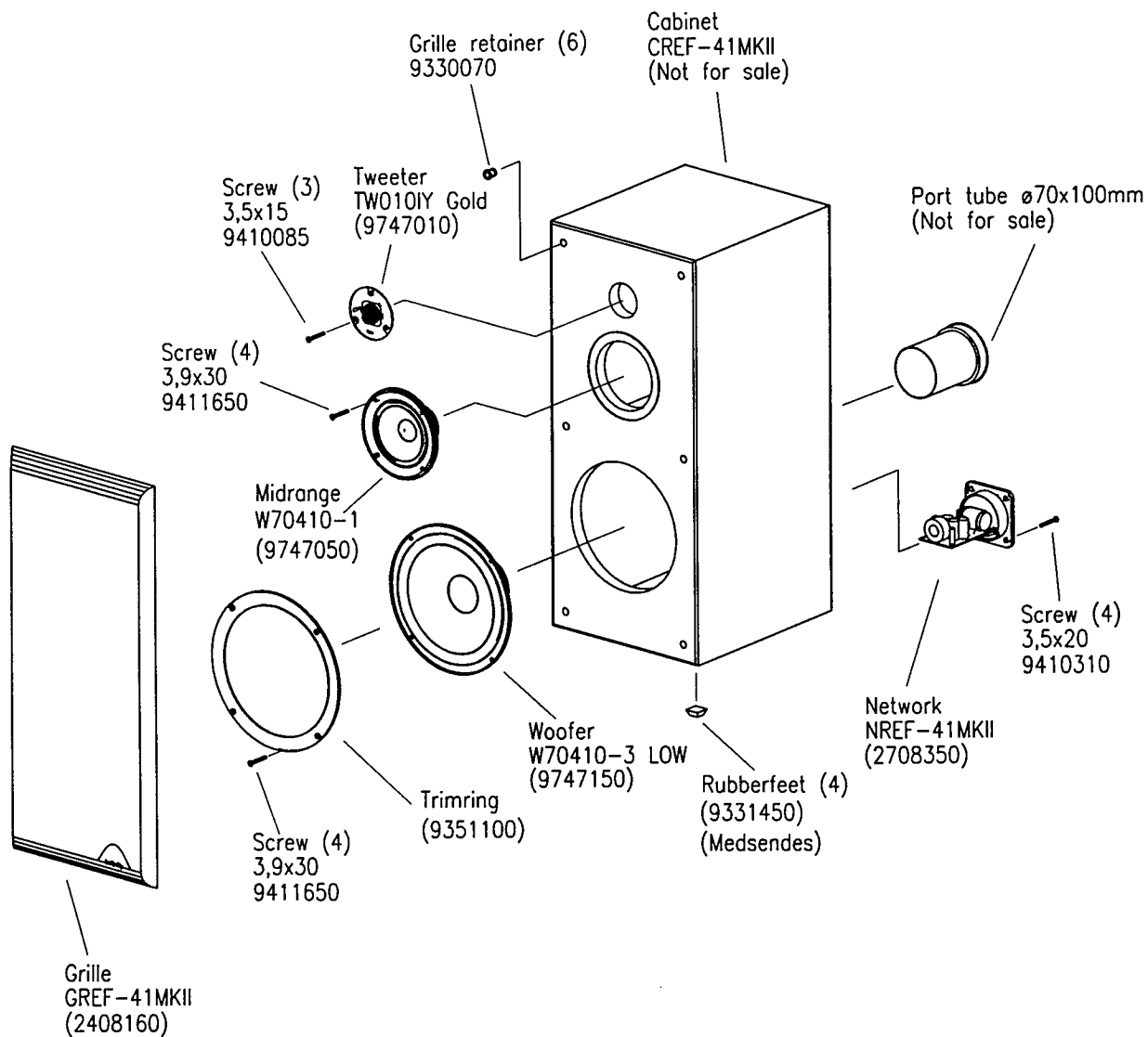


NOTE: CONE/DIAPHRAGM KIT NOT AVAILABLE.  
DEFECTIVE DRIVER SHOULD BE REPLACED.

REF-41MKII

# REF-41MKII

## COMPONENT EXPLODED VIEW



REF-41MKII