



Schematic set

CA Series power amplifiers

May 2000 (current production)

1. Front display board
2. Rear Input connector board
3. CA6 / CA9 Preamp
4. CA6 / CA9 / CA12 Power supply
5. CA6 / CA9 Output power module

6

5

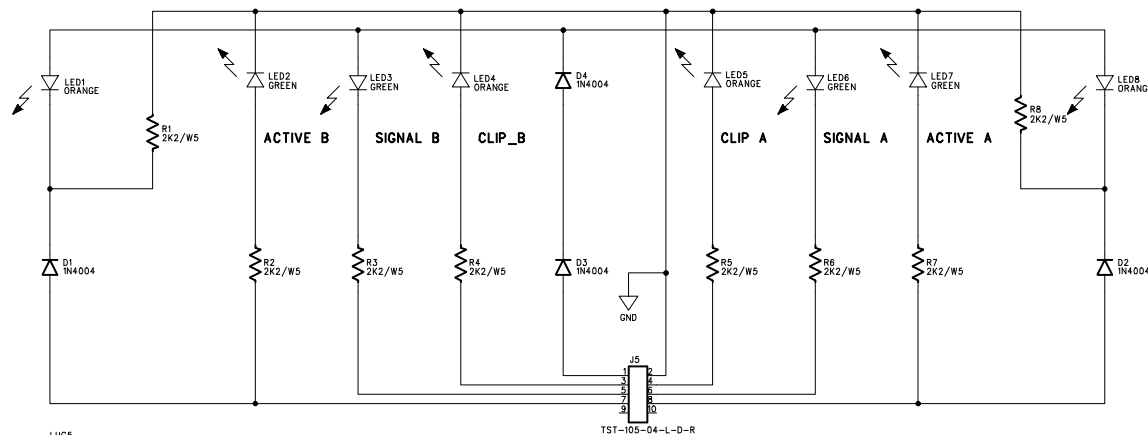
4

3

2

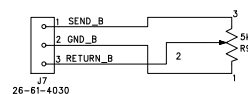
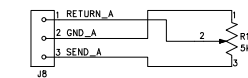
1

REVISION RECORD			
LTR	ECO NO:	APPROVED:	DATE:

LUG5
.25LUGLUG4
.25LUGLUG3
.25LUGLUG1
.25LUGLUG2
.25LUG

AC_IN

AC_OUT

C4
0.47uFR12
SG328R11
SG328R14
1.8K
DOMR13
4K3/7OR
N/UR10
5KR9
5KD5
IN4004C3
220uF
DOMC2
220uFC1
220uFJ5
TST-105-04-L-D-RJ7
26-61-4030J8
26-61-4030

NOTES:
R14 4.3K/7W EXPORT

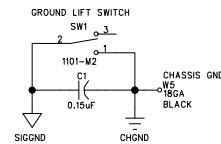
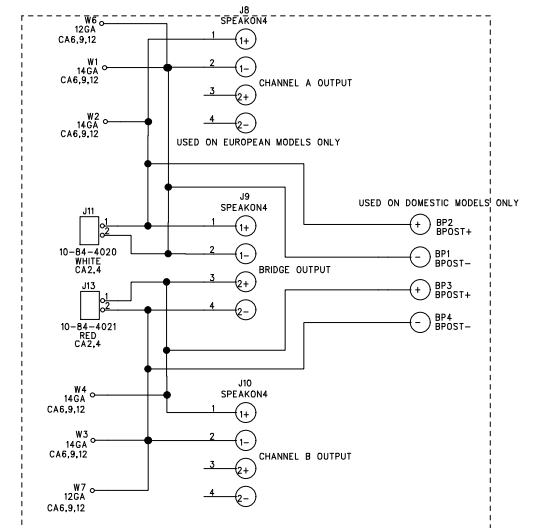
CRESTAUDIO

TITLE:
CA SERIES DISPLAY

DRAWN:	DATED:
CHECKED:	DATED:
QUALITY CONTROL:	DATED:
RELEASED:	DATED:

CODE:	SIZE: C	DRAWING NO: 21A1925-05	REV: 5
SCALE:		SHEET: 1 OF 1	

REVISION RECORD			
LTR	ECO NO:	APPROVED:	DATE:



MODE SWITCH
B= BRIDGE MODE
P= PARALLEL MODE
S= STEREO MODE



TITLE:			
CA 2.4, 6, 9, & 12 INPUT			
CODE:	SIZE:	DRAWING NO:	REV:
	C	2410-01	01
SCALE:		SHEET: 1 OF 2	

DRAWN:	BE	DATED:	11/28/94
CHECKED:		DATED:	
QUALITY CONTROL:		DATED:	
RELEASED:		DATED:	

D

C

B

A

D

C

B

A

6

5

4

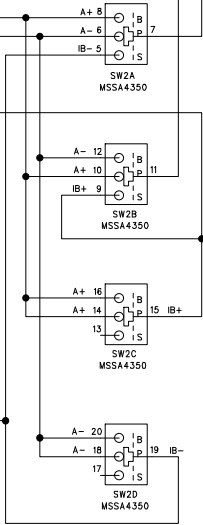
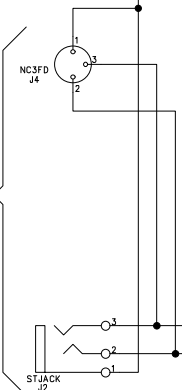
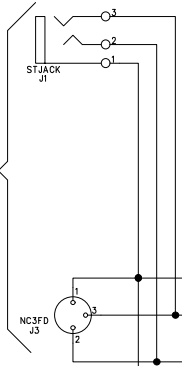
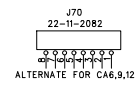
3

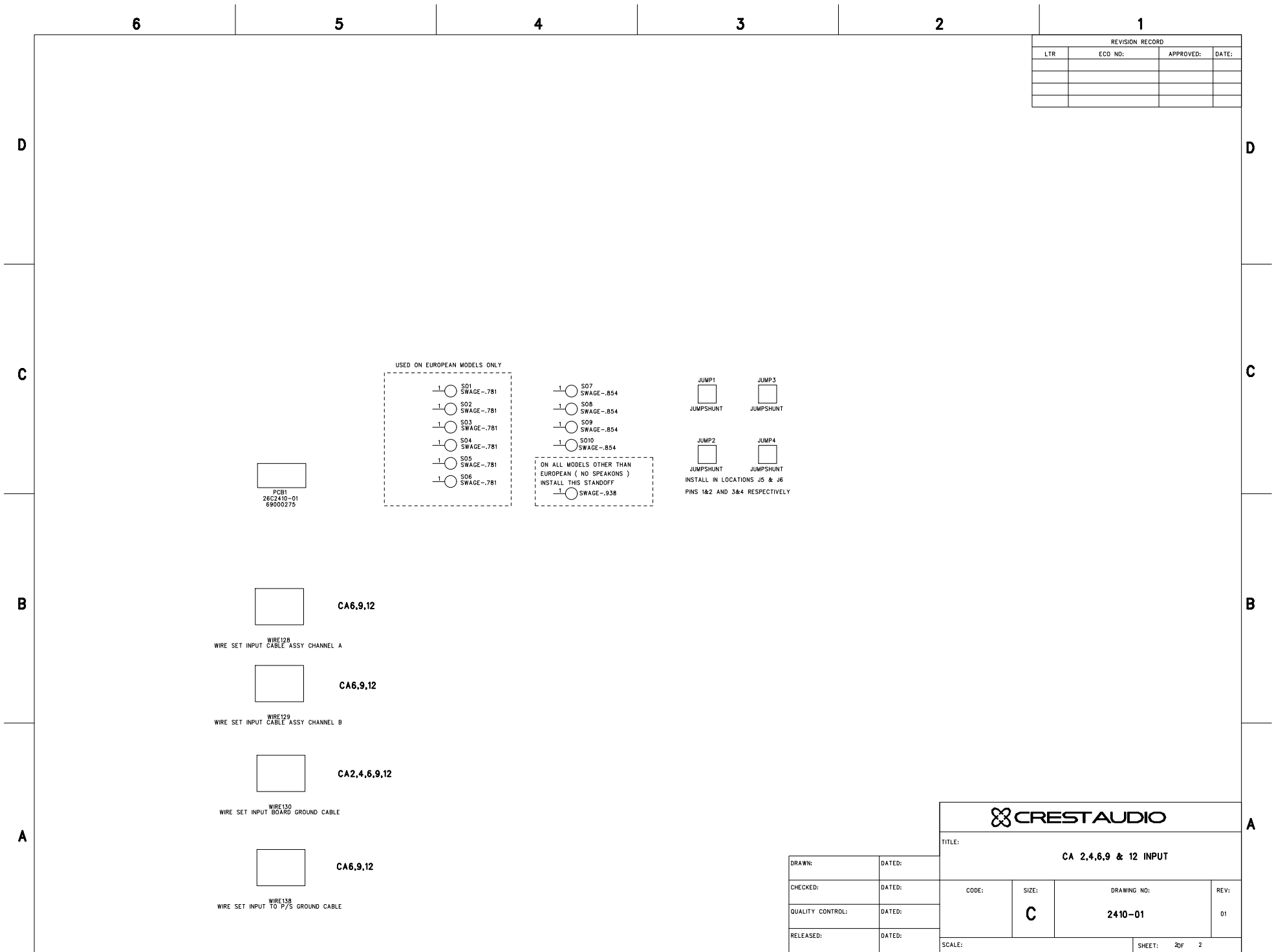
2

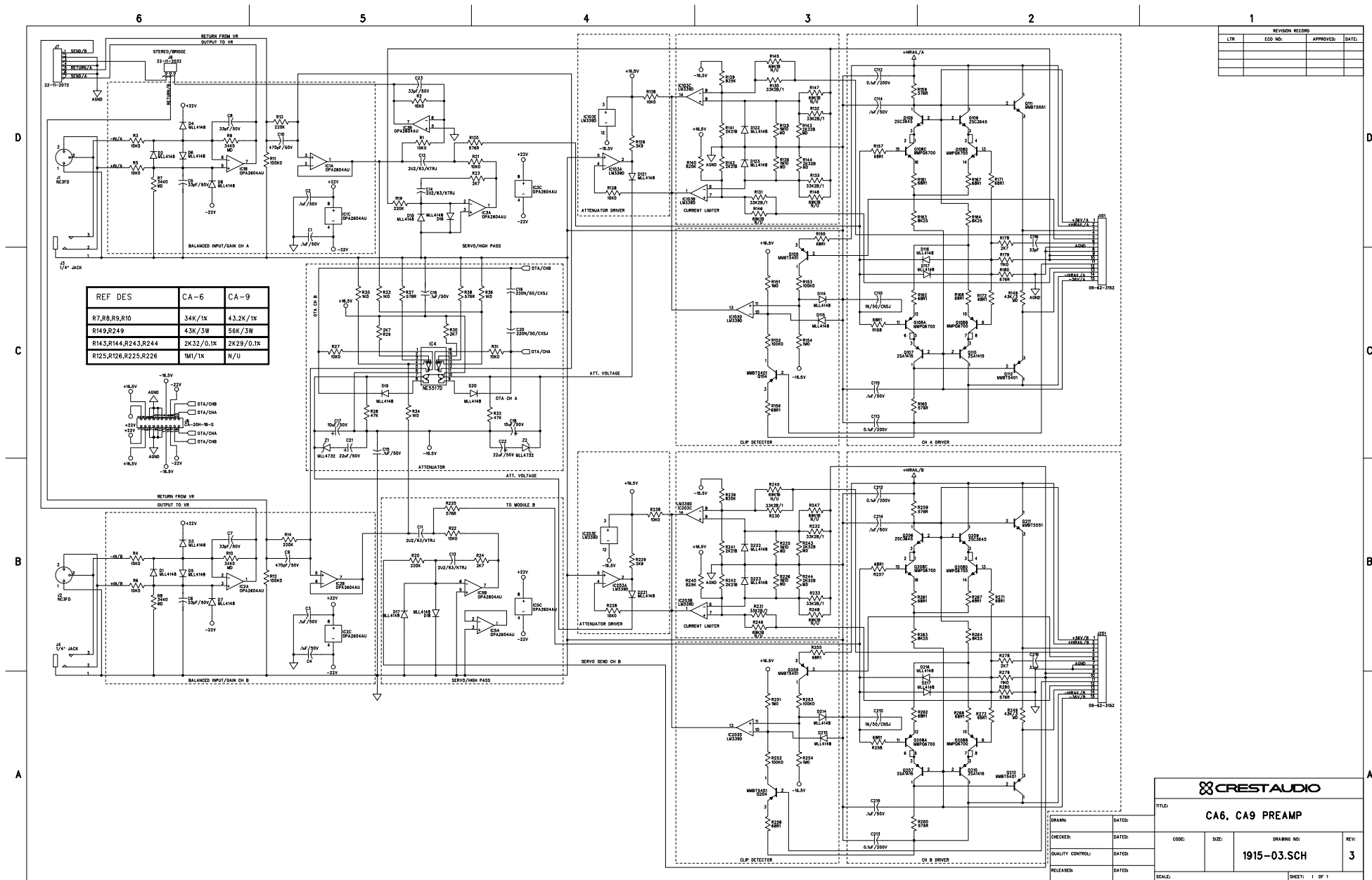
1

CHANNEL A

CHANNEL B







6

5

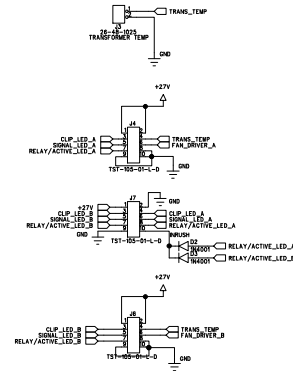
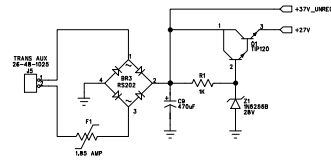
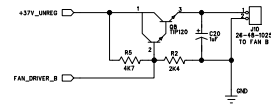
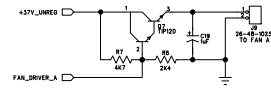
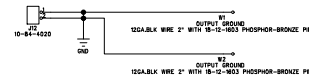
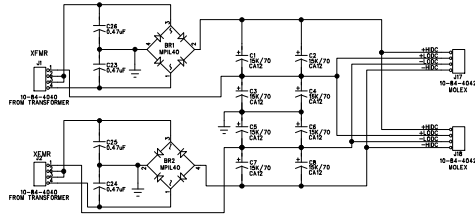
4

3

2

1

REVISION RECORD			
LTR	ECO NO.	APPROVED	DATE

**CRESTAUDIO**

TITLE: CAR/9/12 POWER SUPPLY

DRAWN: BE	DATE: 2/94	CODE:	SIZE:	DRAWING NO:	REV: 03
CHECKED: FR	DATE: 7-6-95				
QUALITY CONTROL:	DATE:				
RELEASED:	DATE:				

SCALE: SHEET: 1 OF 1

6

5

4

3

2

1

REVISION RECORD			
LTR	ECO NO.	APPROVED	DATE



FOR R1 & R2 TO 1/3 PCB



CA6/12 HEATSINK FOR BRIDGE RECT.



FOR BRIDGE RECTIFIER HEATSINK
SCREW, #8-16/8 ST TYPE D SELF-TAP PAN HD PHL ZINC BLACK



SCR1
FOR BRIDGE RECTIFIER HEATSINK

MODEL DEPENDENT CAPACITORS

	CA6	CA9	CA12
C1,2=	C301 175/50V CAB	C301 150/50V CAB	C302 150/50V CAB
C3,4=	C304 175/50V CAB	C303 150/50V CAB	C304 150/50V CAB
C5,6=	C305 175/50V CAB	C305 150/50V CAB	C306 150/50V CAB
C7,8=	C308 175/50V CAB	C307 150/50V CAB	C308 150/50V CAB



FOR BRIDGE RECTIFIER HEATSINK



FOR BRIDGE RECTIFIER HEATSINK



FOR BRIDGE RECTIFIER HEATSINK
SCREW, 10-32x3/4 PAN HD PHL ZINC BLACK



FOR BRIDGE RECTIFIER HEATSINK
SCREW, 10-32x3/4 PAN HD PHL ZINC BLACK



HEATSSP



NUT, 4-40, XEP



SCR4-40x8/8



HEATSSP



NUT, 4-40, XEP



SCR4-40x8/8



HEATSSP



NUT, 4-40, XEP



SCR4-40x8/8

HEATSINKS AND HARDWARE MOUNT TO 07, OR, 01



E1
EDGE PROTECTOR_1
USED ON HEATSINK TO PROTECT WIRES



E2
EDGE PROTECTOR_2
USED ON HEATSINK TO PROTECT WIRES



E3
EDGE PROTECTOR_2
USED ON HEATSINK TO PROTECT WIRES

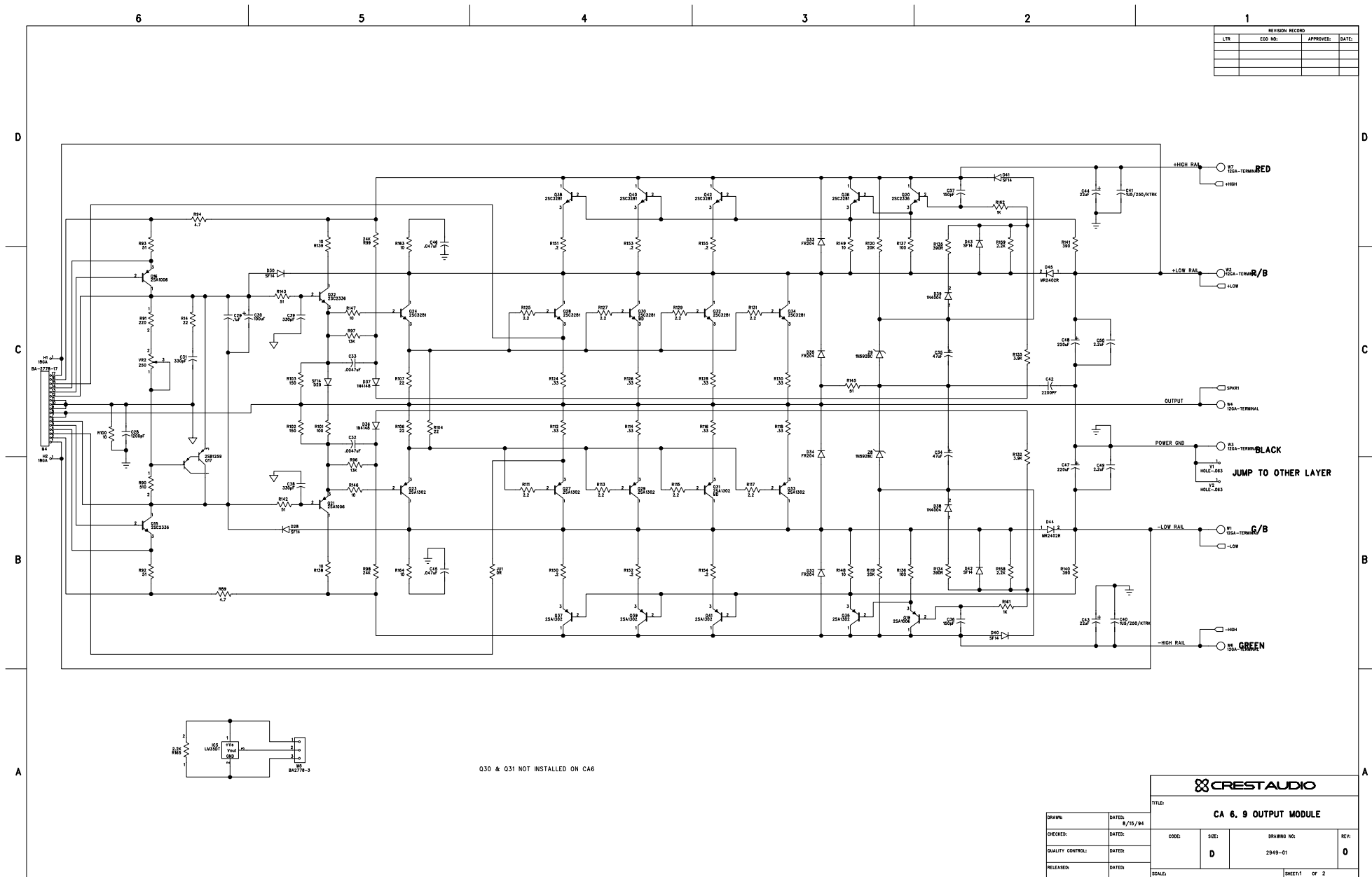


TITLE: CA6/9/12 POWER SUPPLY
CA6_9_12CAP.sch

DRAWN:	DATE:
CHECKED:	DATE:
QUALITY CONTROL:	DATE:
RELEASED:	DATE:

CODE	SIZE	DRAWING NO.	REV

SCALE: SHEET: 2 of 2



6

5

4

3

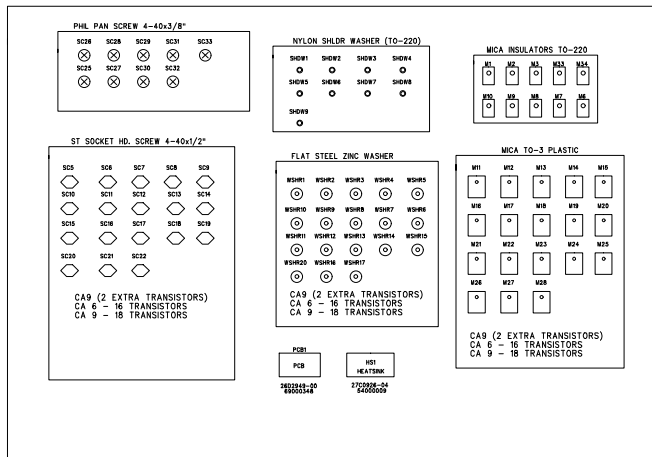
2

1

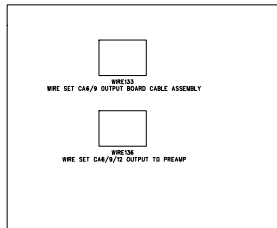
REVISION RECORD			
LTN	ECO NO.	APPROVED	DATE

REV-1 BOARDS WERE NOT SENT OUT
CA 6.9 OUTPUT WAS 7001 OUTPUT PCB
SCHEMATIC MATCHES REV-1 EXCEPT FOR VALUES
LAYOUT WAS DONE USING OLD DATABASE
SEVERAL RESISTOR PINS 1 & 2 ARE SWAPPED BETWEEN SCHEMATIC AND PCB
RESISTOR PINS FIXED ON REV-1

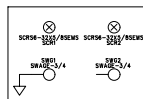
HEATSINK MODULE ASSY.



WIRE ASSEMBLY



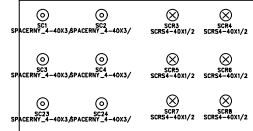
FASTEN PREAMP TO OUTPUT PCB



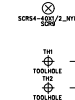
TE1
TE_WBSP/62

WASHER_24_00.24
WASHER_24_00.24

FASTEN OUTPUT PCB TO HEATSINK



LM35DP



CREST AUDIO

TITLE:			
CA 6. 9 OUTPUT MODULE			
CODE:	SIZE:	DRAWING NO:	REV:
	D	2949-00	0
SCALE:	SHEET: 2 OF 2		