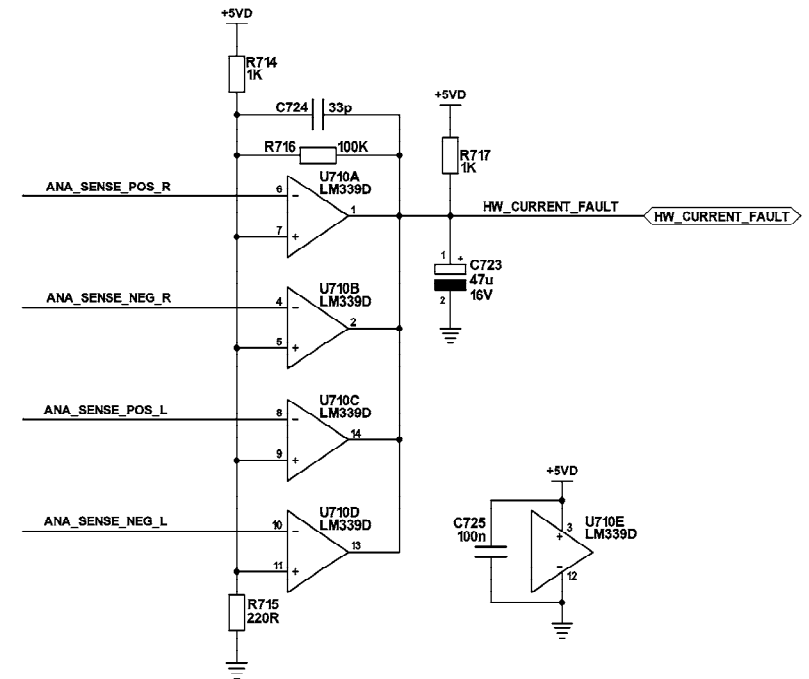
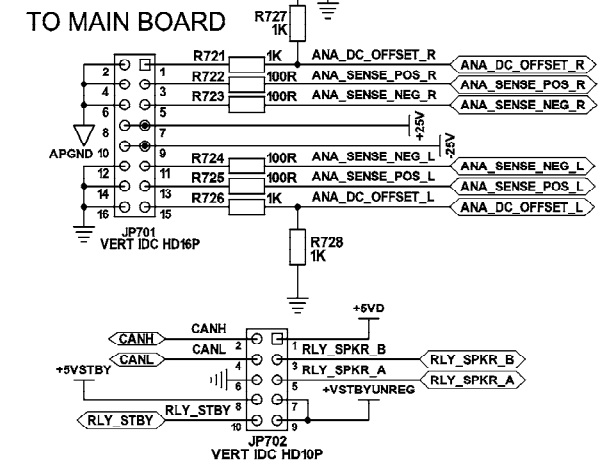
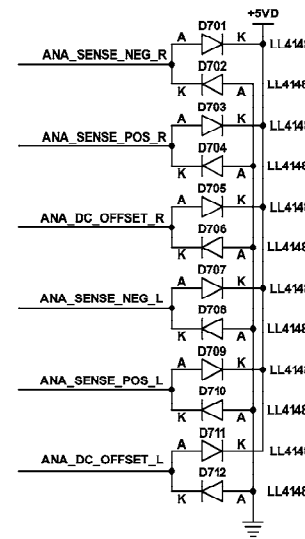
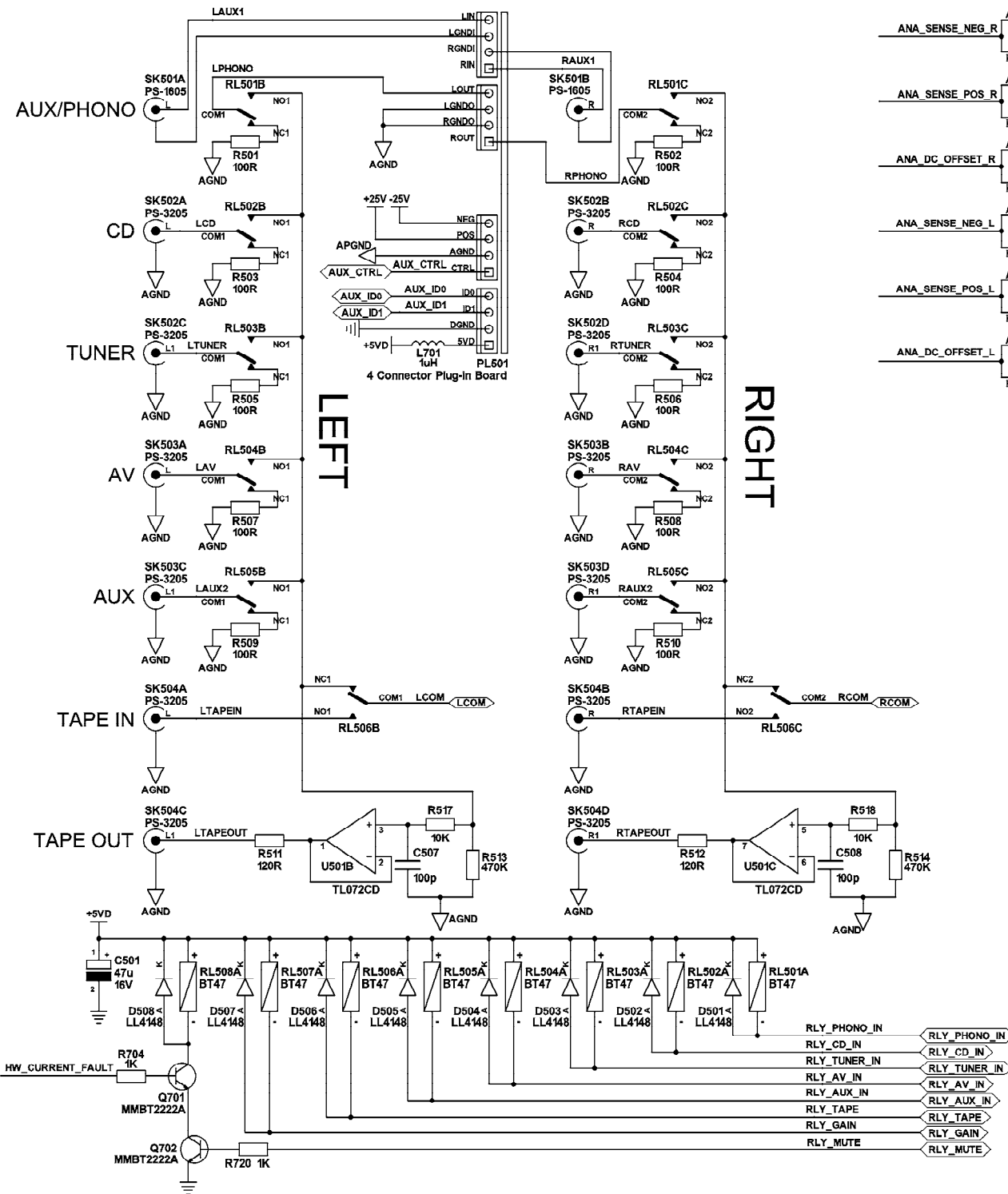


PHONO/AUXILIARY CARD



CREEK AUDIO LTD.

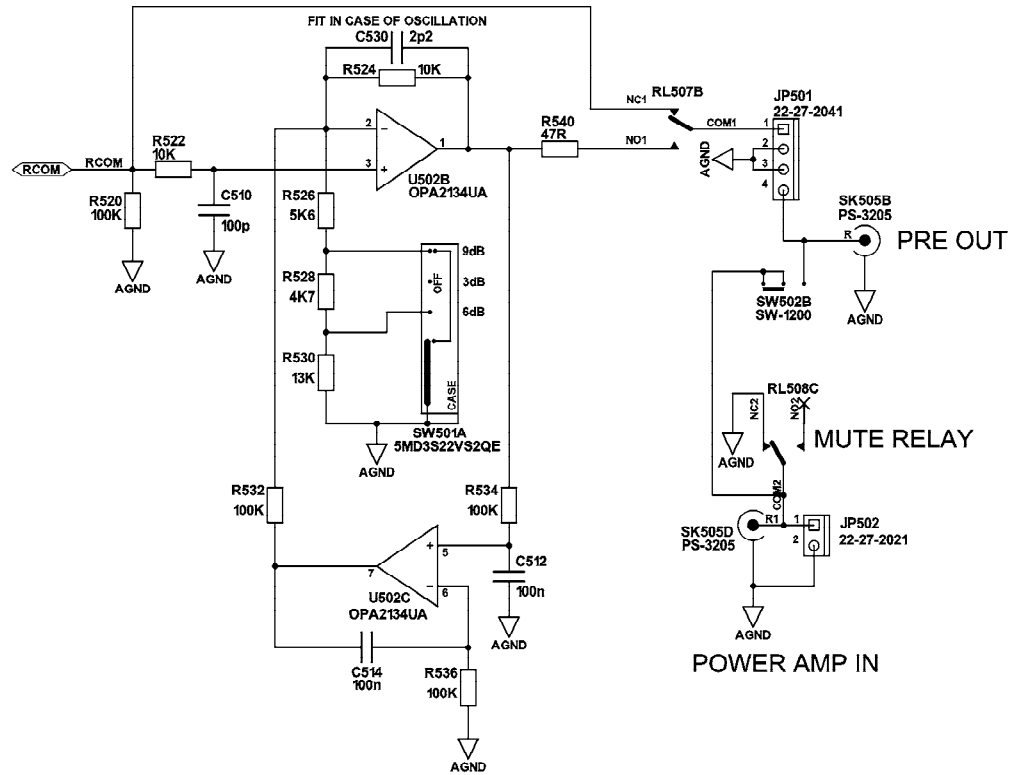
12 Avebury Court,
Mark Road,
Hemel Hempstead,
Herts. HP2 7TA,
U. K.
Tel. +44-(0)1442-260146
Fax +44-(0)1442-243766

Drawing Title :
Destiny Amplifier Input Board R01 P4B
Description:
Input switching and interconnects

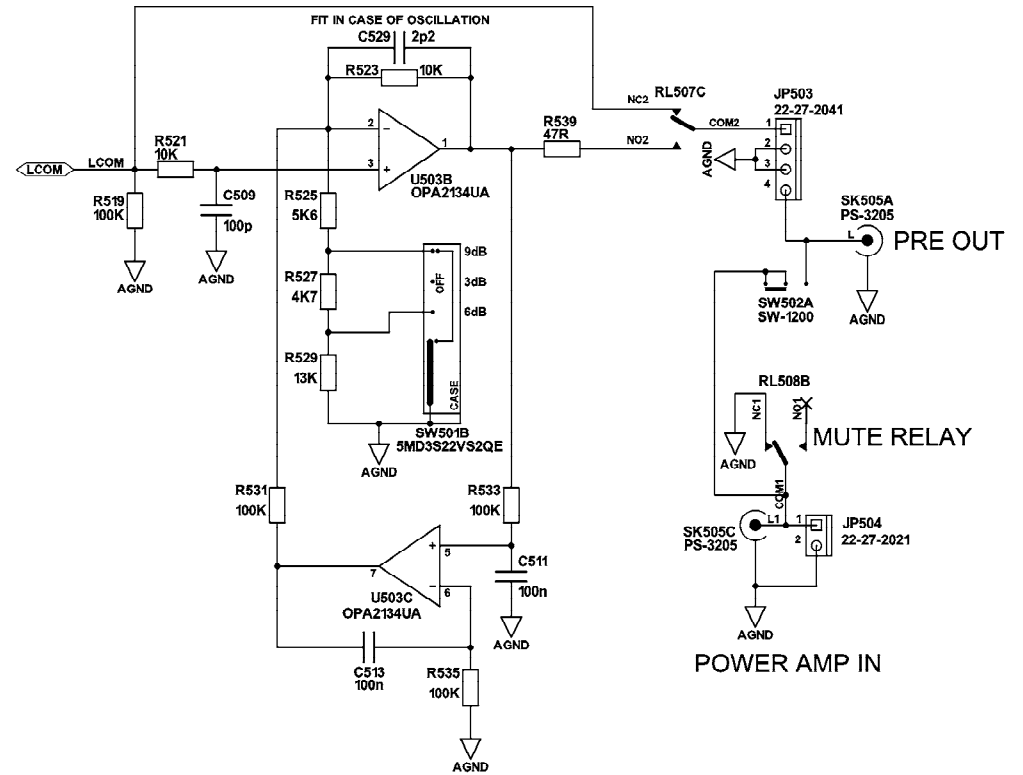
Drawn by: Santo Prattico

PAGE : 1 OF 4
DATE : 9th December 2005

RIGHT



LEFT



CREEK AUDIO LTD.

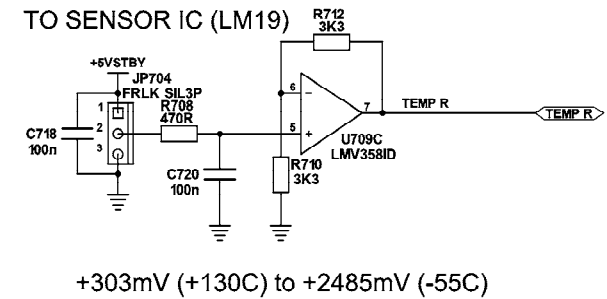
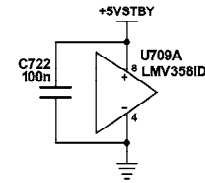
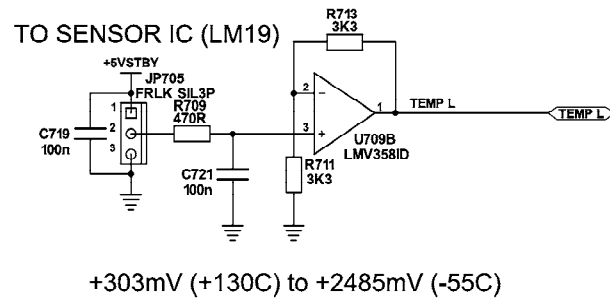
12 Avebury Court,
Mark Road,
Hemel Hempstead,
Herts. HP2 7TA,
U. K.
Tel. +44-(0)1442-260146
Fax +44-(0)1442-243766

Drawing Title :
Destiny Amplifier Input Board R01 P4B
Description:
Gain stage

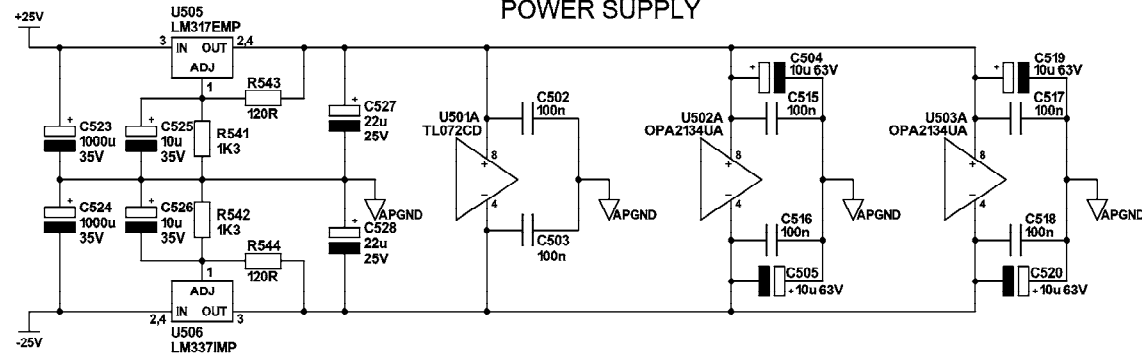
Drawn by: Santo Prattico

PAGE : 2 OF 4
DATE : 9th December 2005

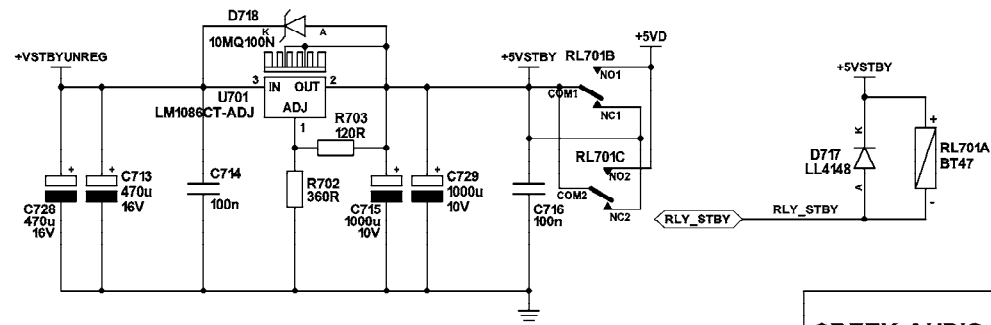
TEMPERATURE SENSE



ANALOGUE POWER SUPPLY



DIGITAL POWER SUPPLY



CREEK AUDIO LTD.

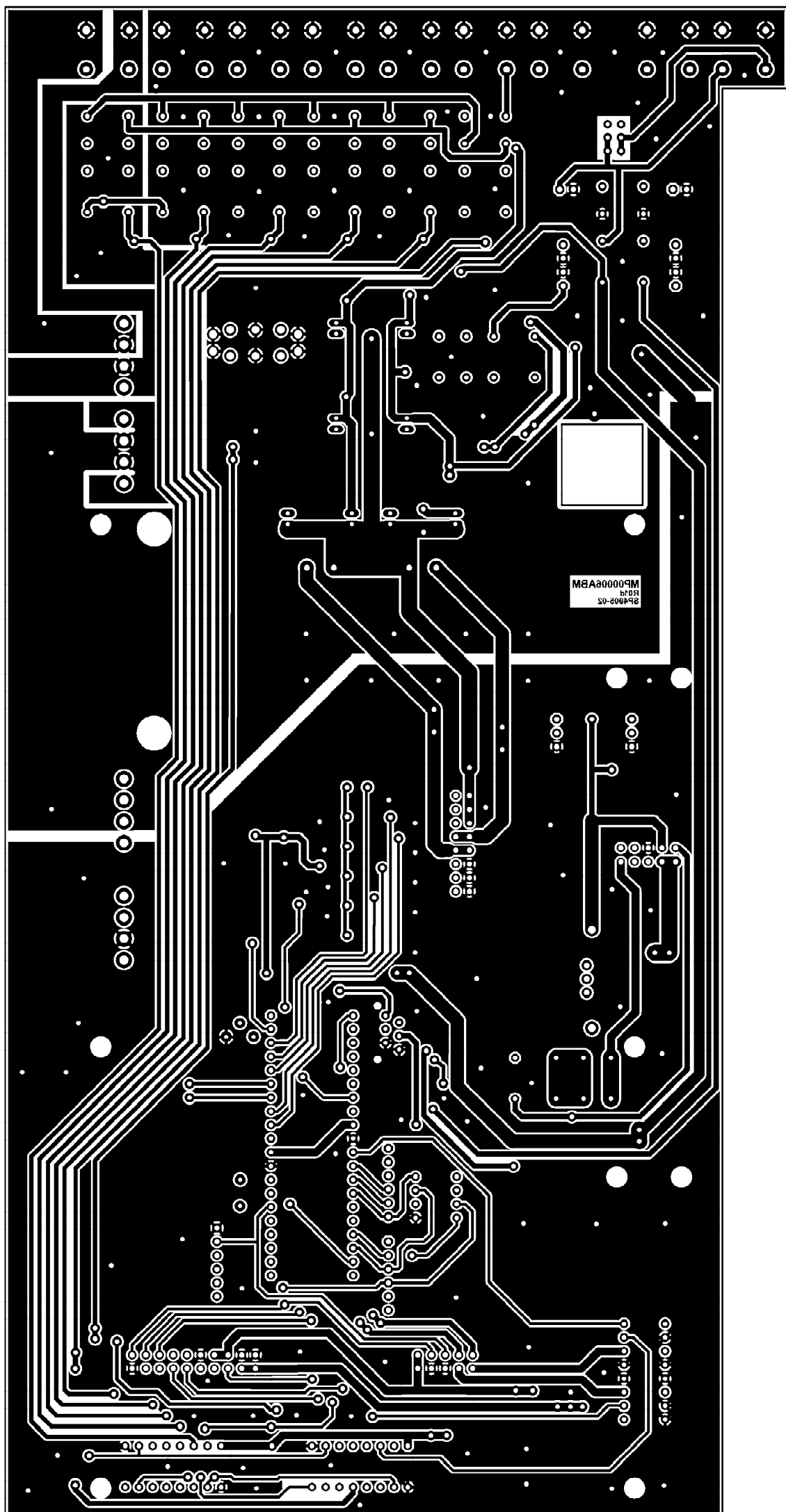
**12 Avebury Court,
Mark Road,
Hemel Hempstead,
Herts. HP2 7TA,
U. K.
Tel. +44-(0)1442-260146
Fax +44-(0)1442-243766**

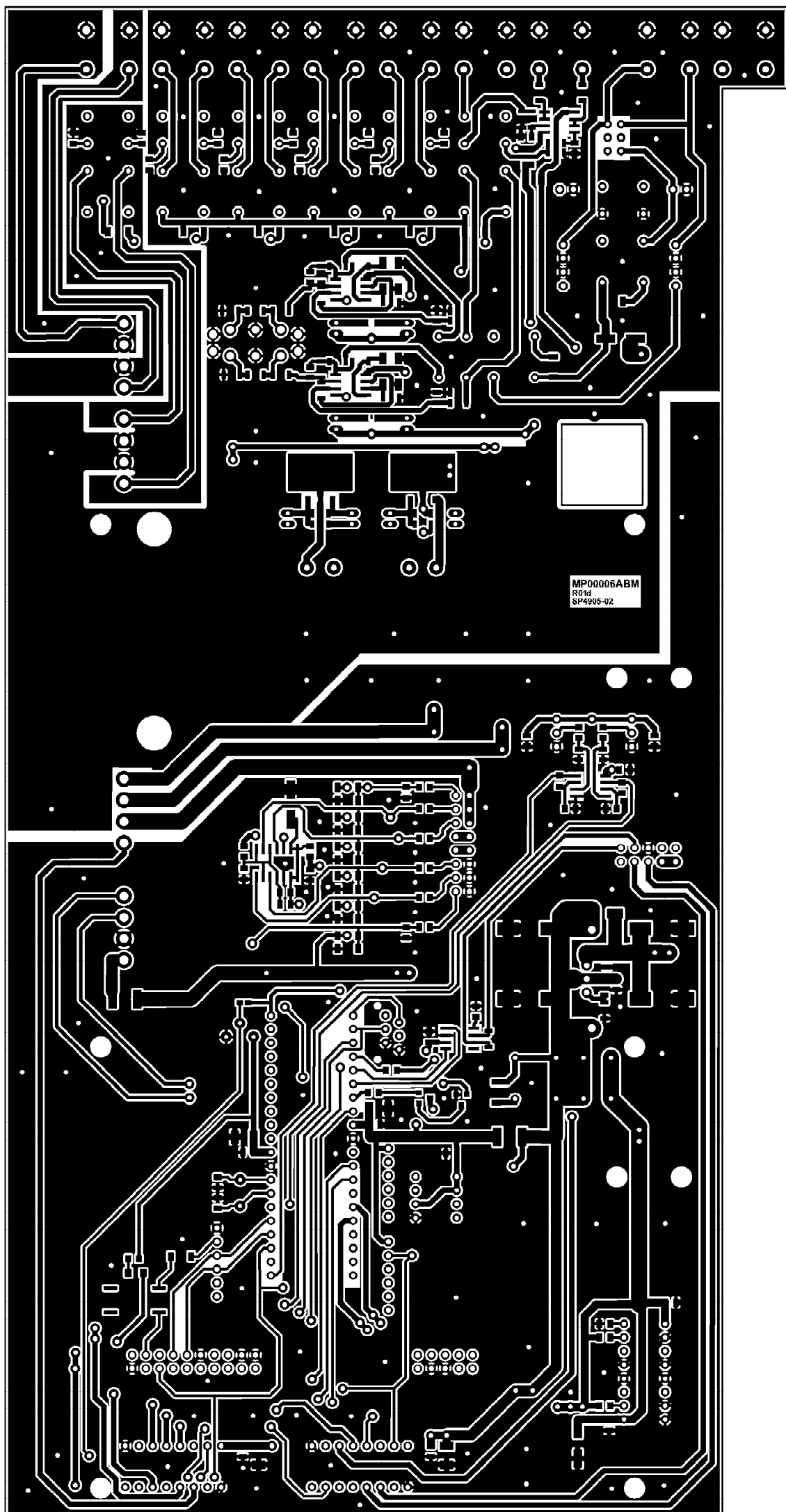
Drawing Title : Destiny Amplifier Input Board R01 P4B Description: Power supply and temperature sensors
--

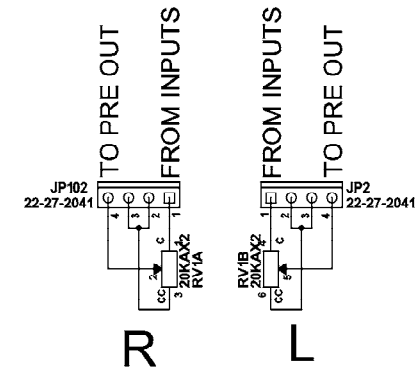
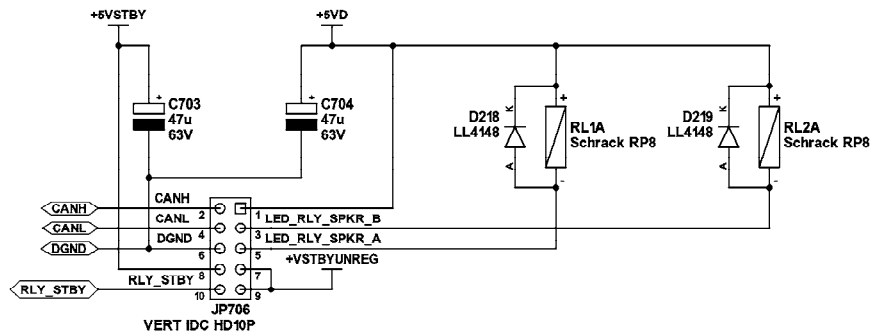
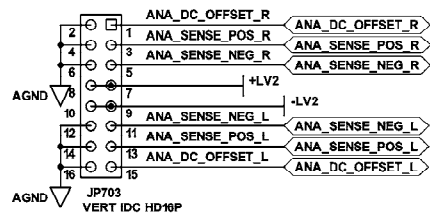
Drawn by: Santo Prattico

PAGE : 4 OF 4

DATE : 9th December 2005







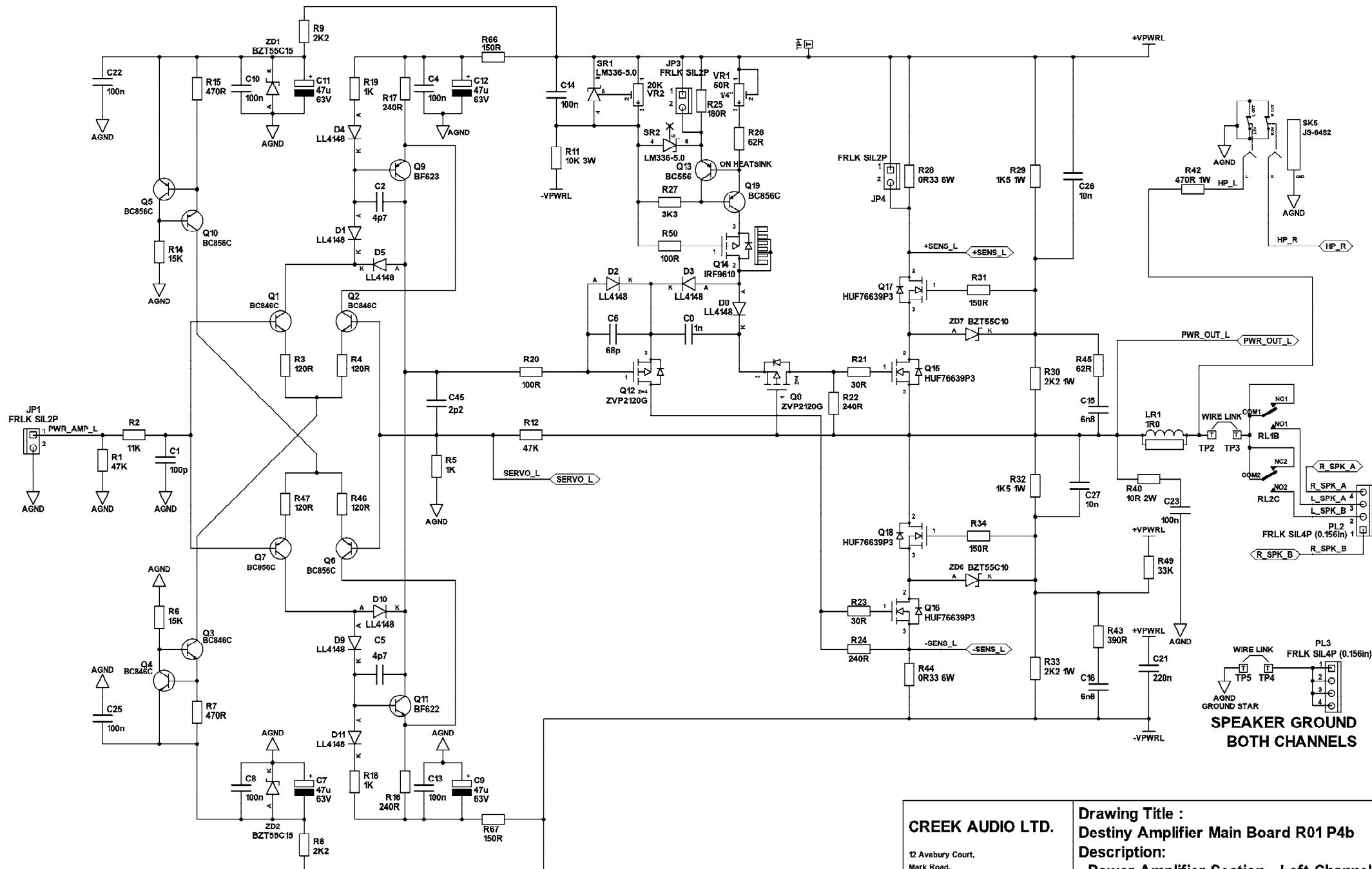
CREEK AUDIO LTD.

12 Avebury Court,
Mark Road,
Hemel Hempstead,
Herts. HP2 7TA,
U. K.
Tel. +44-(0)1442-260146
Fax +44-(0)1442-243766

Drawing Title :
Destiny Amplifier Main Board R01 P4b
Description:
Volume control and signal connections

Drawn by: Santo Prattico

PAGE : 1 OF 7
DATE : 1st December 2005



CREEK AUDIO LTD.

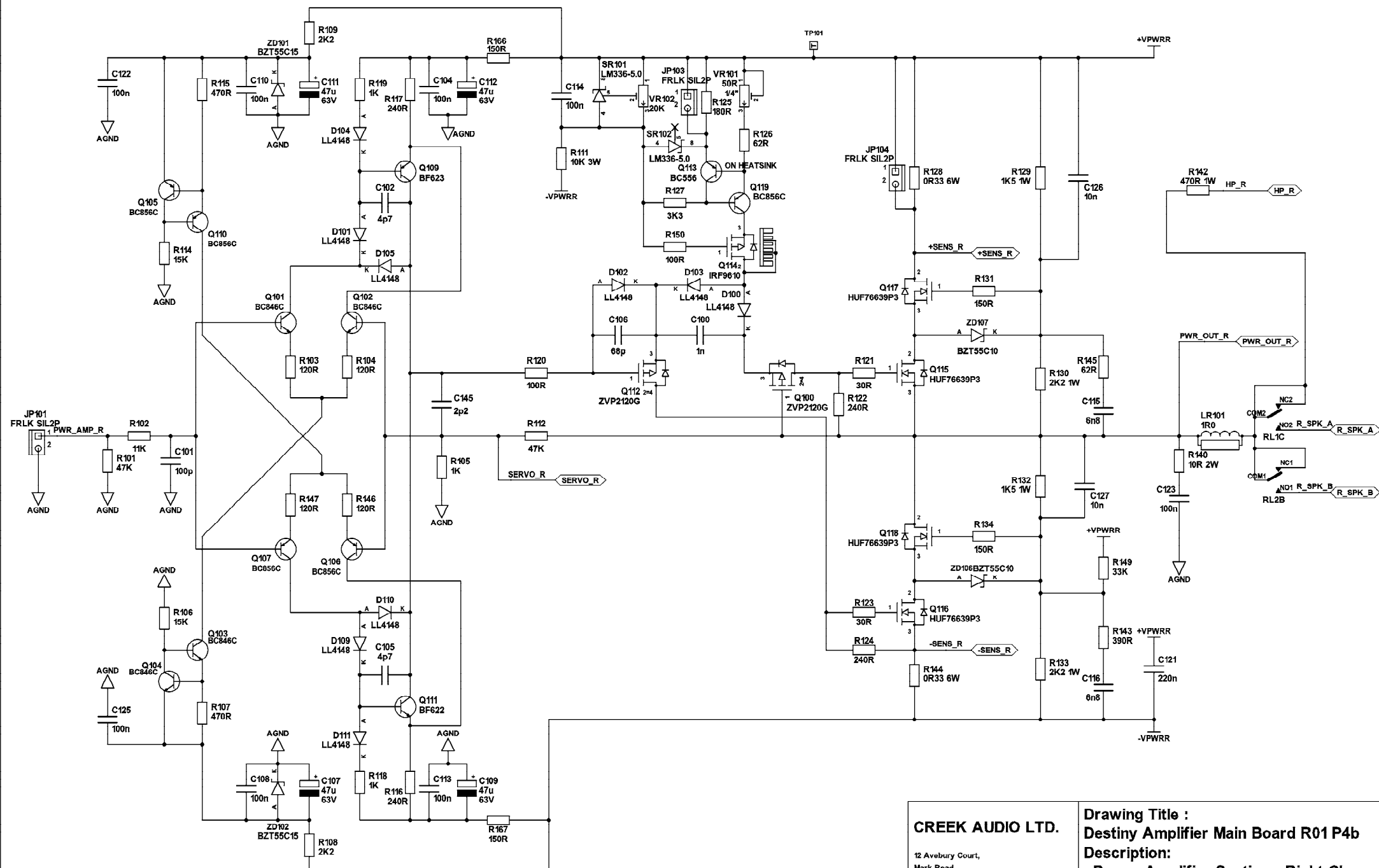
12 Avebury Court,
Mark Road,
Hemel Hempstead,
Herts. HP2 7TA.
U. K.
Tel. +44-(0)1442-360146
Fax +44-(0)1442-243766

Drawing Title :
Destiny Amplifier Main Board R01 P4b
Description:
Power Amplifier Section - Left Channel

Drawn by: Santo Prattico

PAGE : 2 OF 7

DATE : 1st December 2005



CREEK AUDIO LTD.

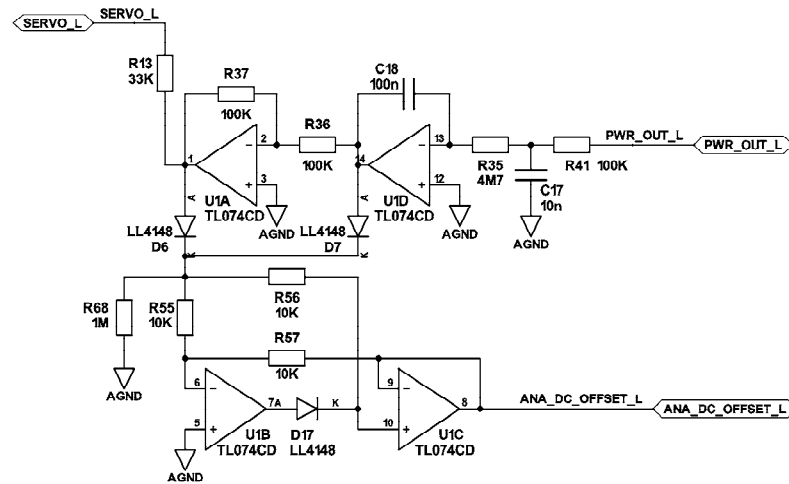
12 Avebury Court,
Mark Road,
Hemel Hempstead,
Herts. HP2 7TA,
U. K.
Tel. +44-(0)1442-260146
Fax +44-(0)1442-243766

Drawing Title :
Destiny Amplifier Main Board R01 P4b
Description:
Power Amplifier Section - Right Channel

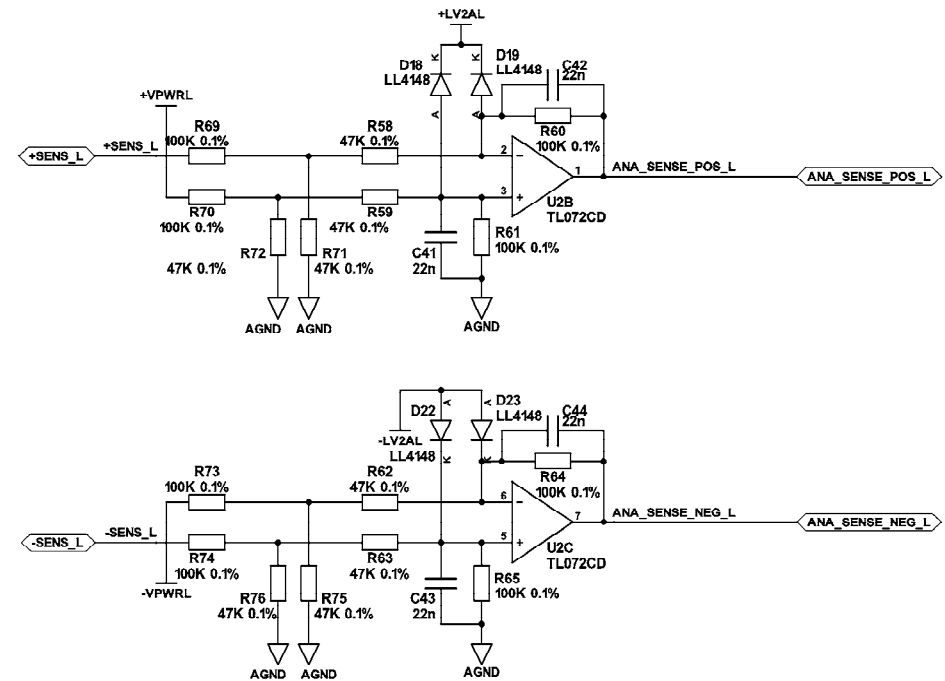
Drawn by: Santo Pratico

PAGE : 3 OF 7
DATE : 1st December 2005

DC SERVO



POWER AMPLIFIER CURRENT SENSE



ALL RESISTORS ARE 1 PERCENT TOLERANCE UNLESS OTHERWISE SPECIFIED

CREEK AUDIO LTD.

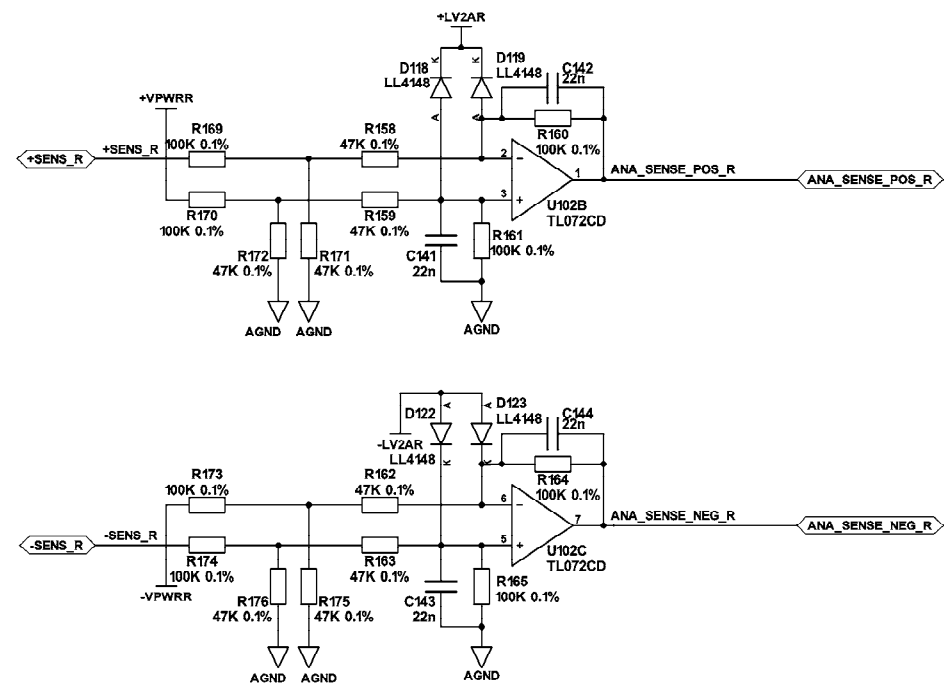
12 Avebury Court,
Mark Road,
Hemel Hempstead,
Herts. HP2 7TA,
U. K.
Tel. +44-(0)1442-260146
Fax +44-(0)1442-243766

Drawing Title :
Destiny Amplifier Main Board R01 P4b
Description:
Signal conditioning - Left channel

Drawn by: Santo Prattico

PAGE : 4 OF 7
DATE : 1st December 2005

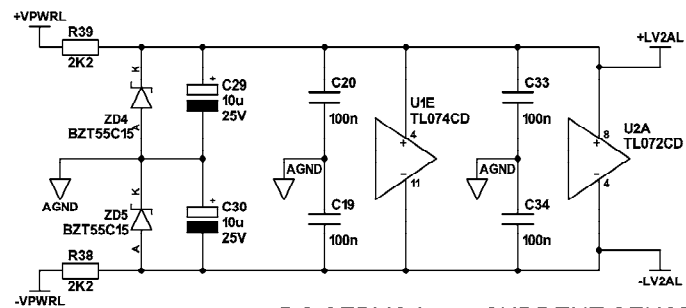
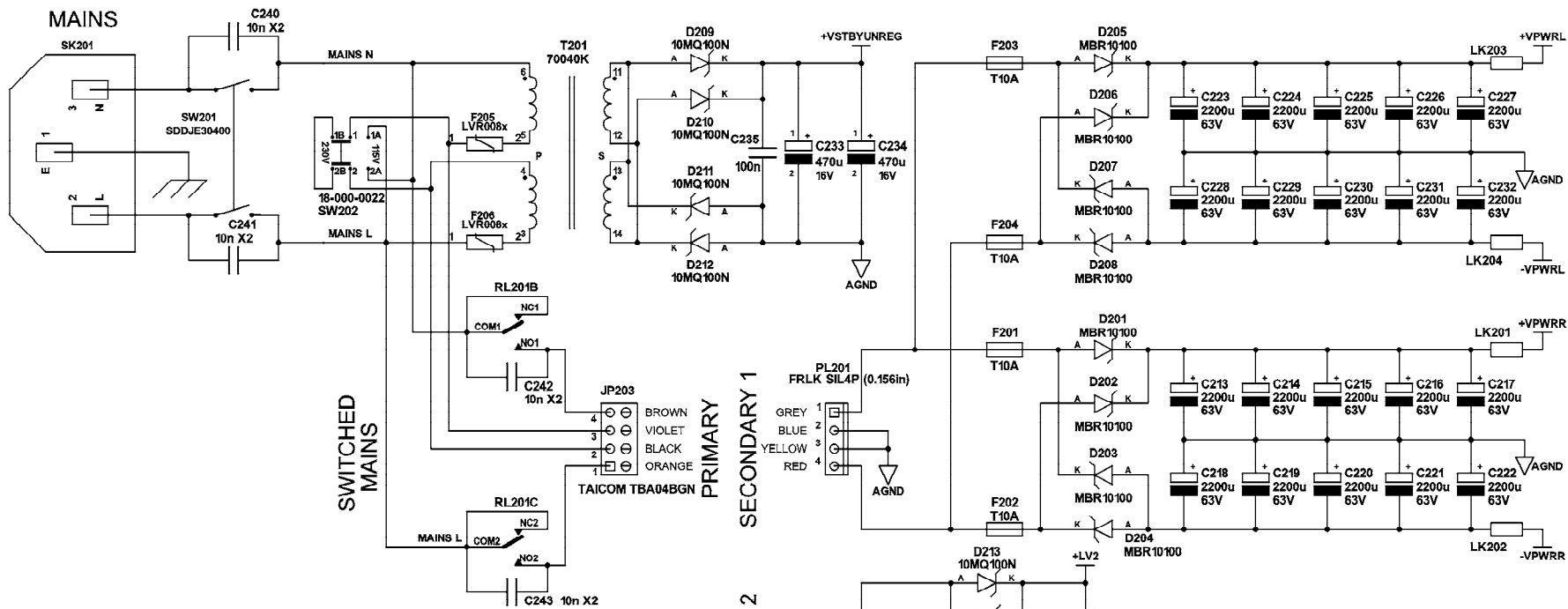
POWER AMPLIFIER CURRENT SENSE



Drawing Title :
Destiny Amplifier Main Board R01 P4b
Description:
Signal conditioning - Right channel

PAGE : 5 OF 7
DATE : 1st December 2005

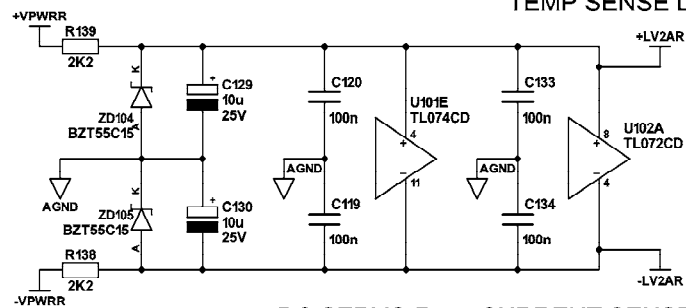
**12 Avebury Court,
Mark Road,
Hemel Hempstead,
Herts. HP2 7TA,
U. K.
Tel. +44-(0)1442-260146
Fax +44-(0)1442-243766**



DC SERVO L

CURRENT SENSE L

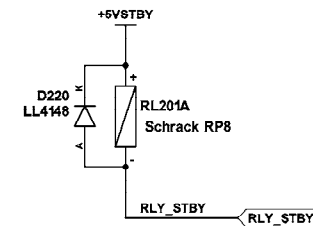
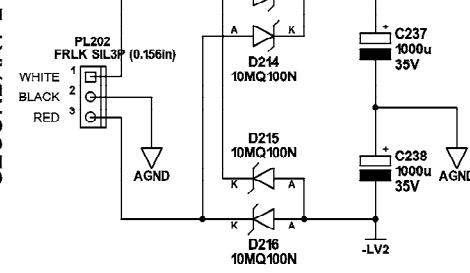
TEMP SENSE L



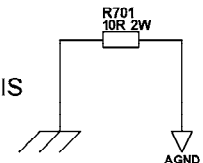
DC SERVO R

CURRENT SENSE R

TEMP SENSE R



TO CHASSIS



CREEK AUDIO LTD.

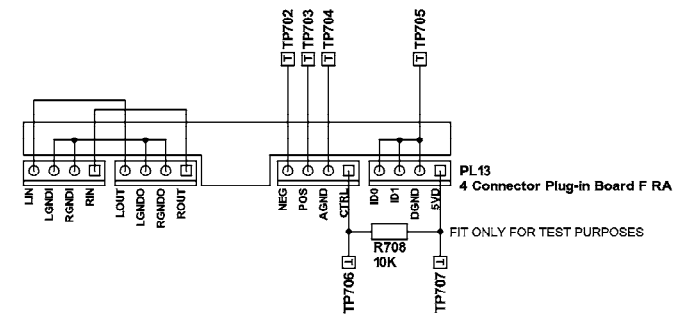
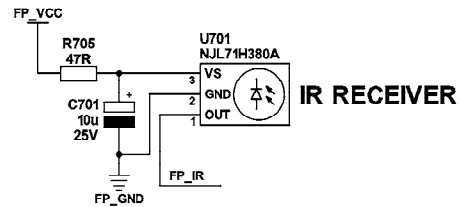
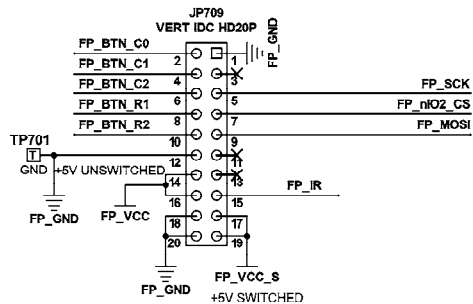
12 Avebury Court,
Mark Road,
Hemel Hempstead,
Herts. HP2 7TA,
U. K.
Tel. +44-(0)1442-260146
Fax +44-(0)1442-243766

Drawing Title :
Destiny Amplifier Main Board R01 P4b
Description:
Power supplies

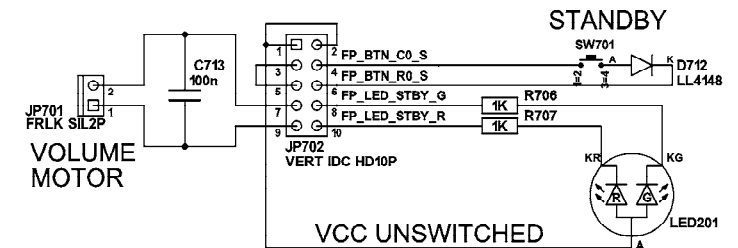
Drawn by: Santo Prattico

PAGE : 6 OF 7

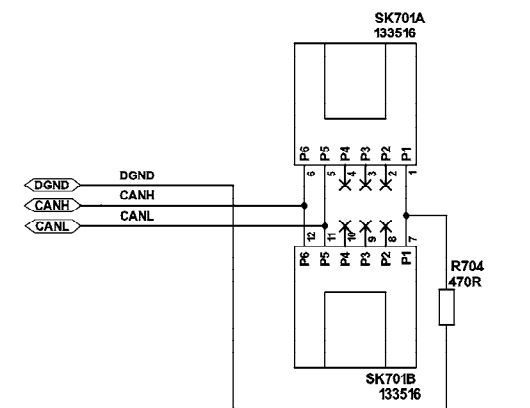
DATE : 1st December 2005



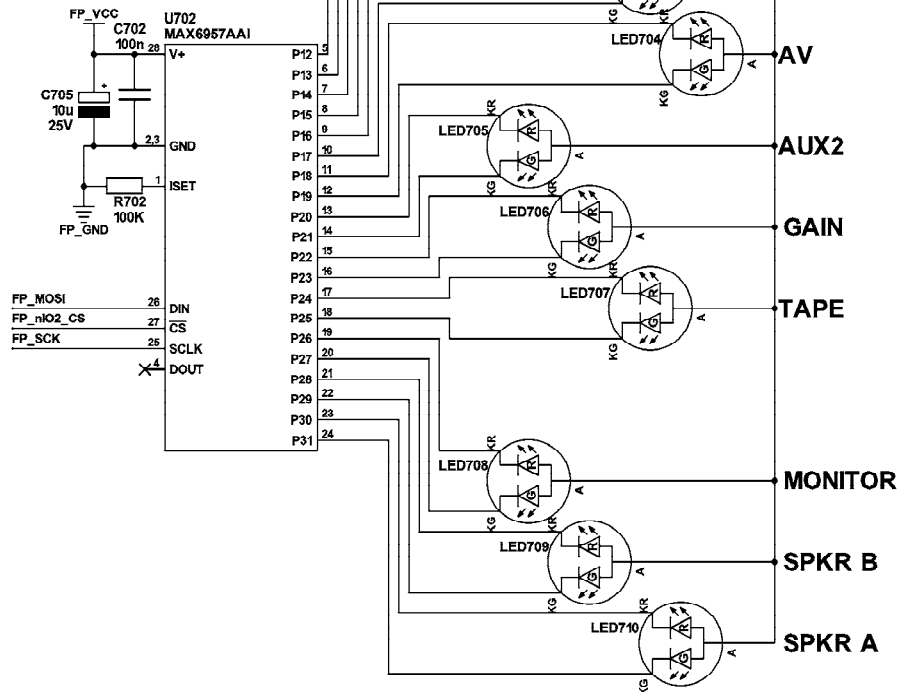
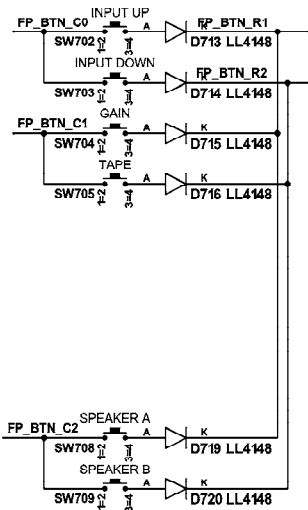
AUX/PHONO BRIDGE & TEST BOARD



STANDBY BOARD



CREEK LINK



FRONT PANEL

CREEK AUDIO LTD.

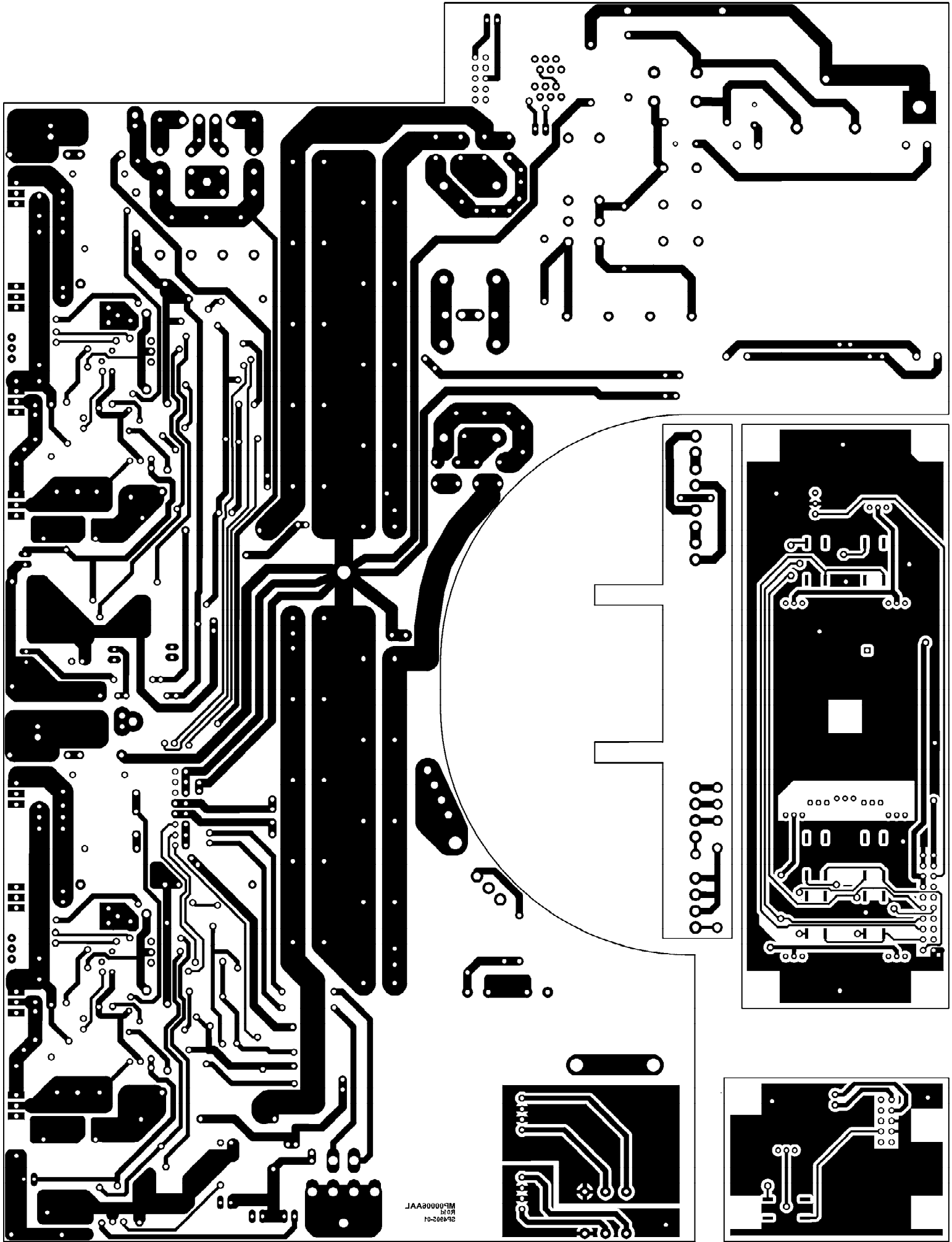
12 Avebury Court,
Mark Road,
Hemel Hempstead,
Herts. HP2 7TA,
U. K.
Tel. +44-(0)1442-260146
Fax +44-(0)1442-243766

Drawing Title :
Destiny Amplifier Main Board R01 P4b
Description:
Auxiliary PCBs

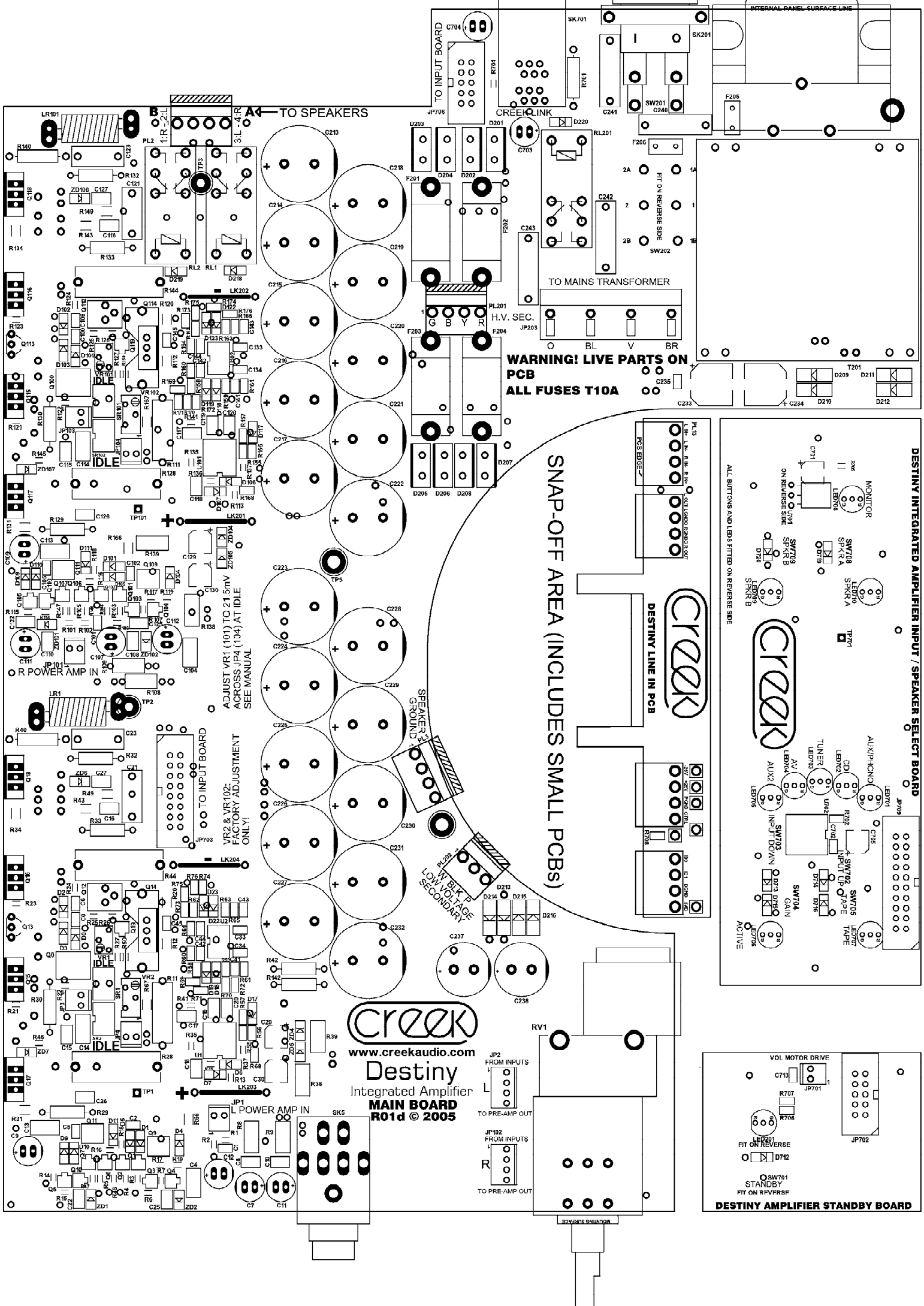
Drawn by: Santo Prattico

PAGE : 7 OF 7

DATE : 1st December 2005

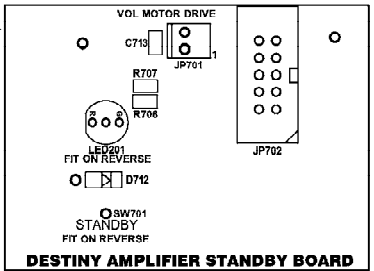
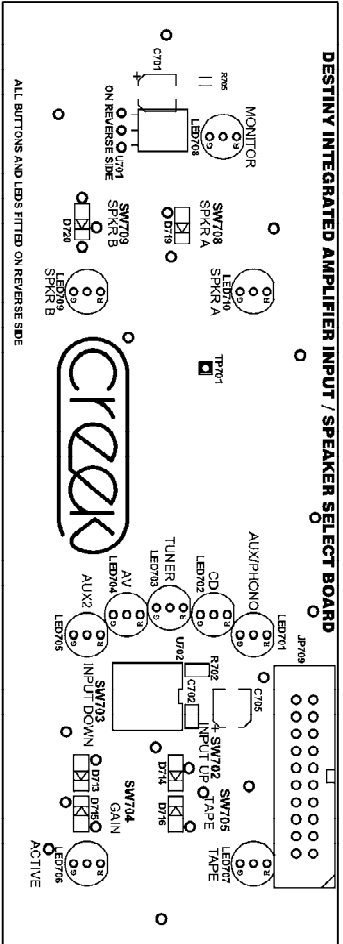


25-4302-01
Rev. 10/2004
M50002AAL

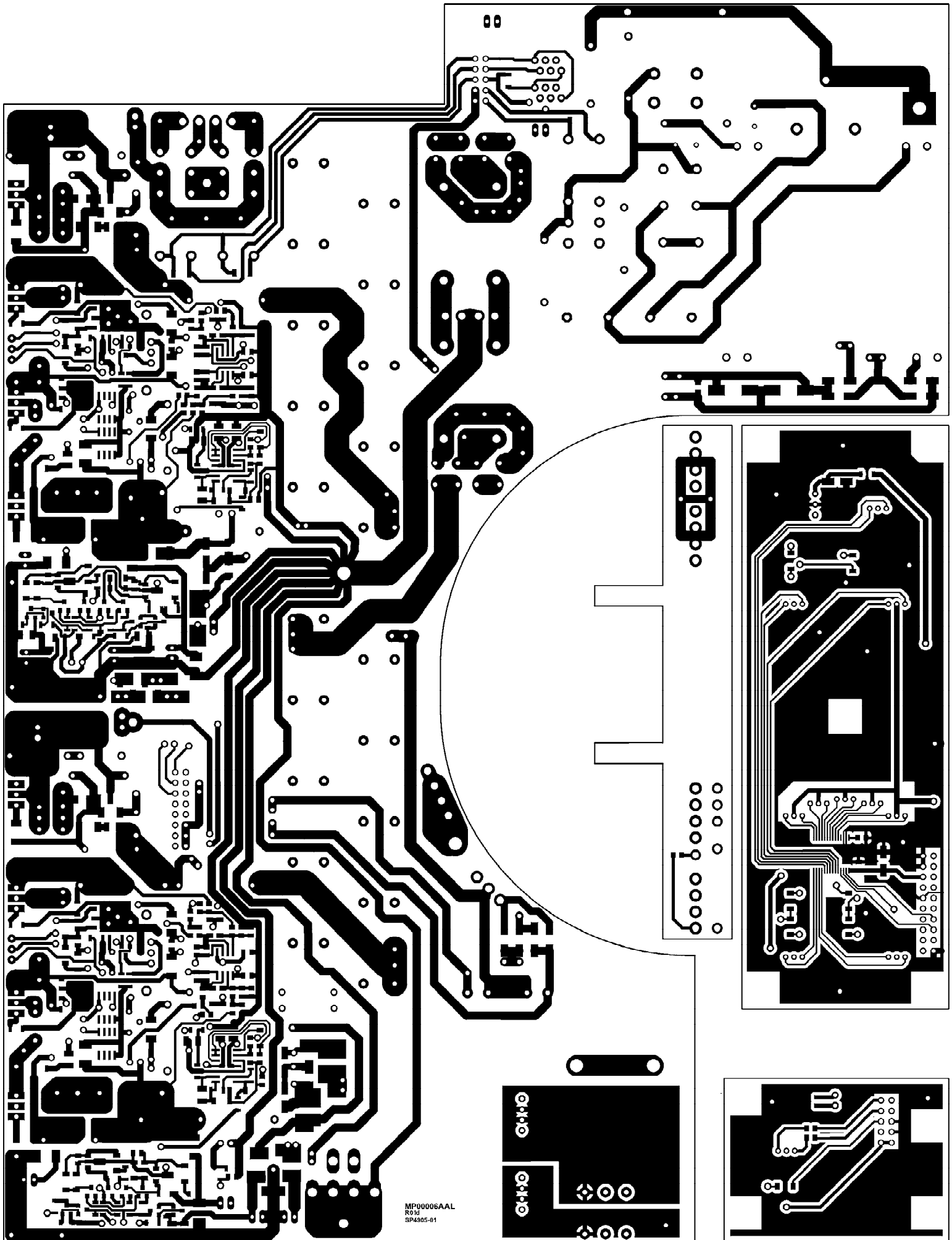


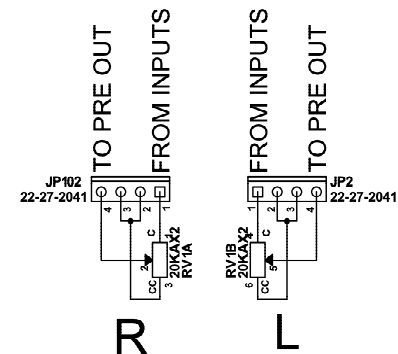
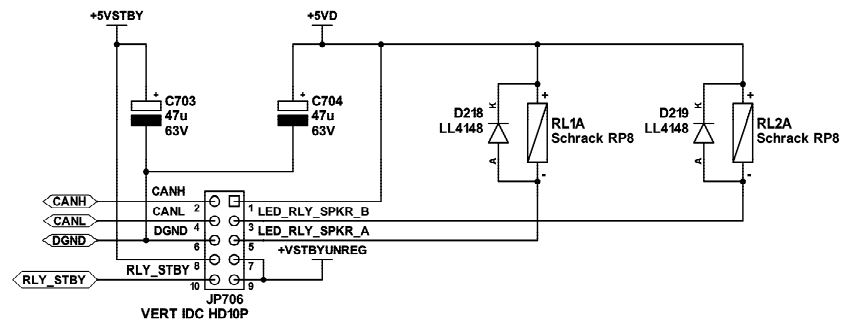
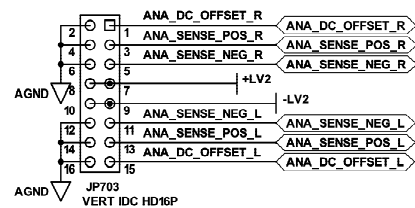
WARNING! LIVE PARTS ON PCB
ALL FUSES T10A

SNAP-OFF AREA (INCLUDES SMALL PCBs)



Creek
www.creekaudio.com
Destiny
Integrated Amplifier
MAIN BOARD
R01d © 2005





CREEK AUDIO LTD.

12 Avebury Court,
Mark Road,
Hemel Hempstead,
Herts. HP2 7TA,
U. K.
Tel. +44-(0)1442-260146
Fax +44-(0)1442-243766

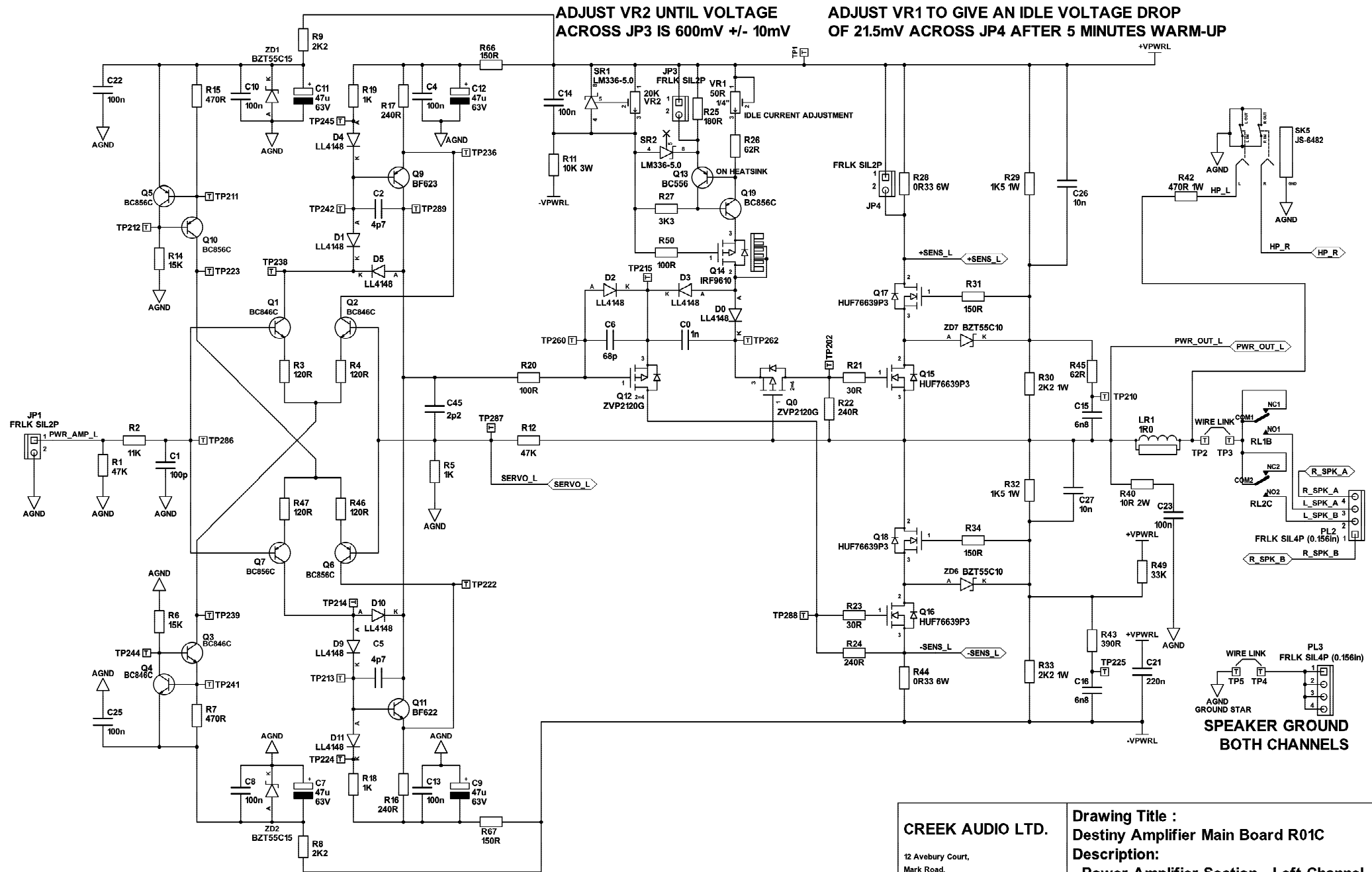
Drawing Title :
Destiny Amplifier Main Board R01C
Description:
Volume control and signal connections

Drawn by: Santo Prattico

PAGE : 1 OF 7
DATE : 22nd August 2008

ADJUST VR2 UNTIL VOLTAGE
ACROSS JP3 IS 600mV +/- 10mV

ADJUST VR1 TO GIVE AN IDLE VOLTAGE DROP
OF 21.5mV ACROSS JP4 AFTER 5 MINUTES WARM-UP



Version 3.0 22/08/08: ADDED ADJUSTMENT DETAILS

CREEK AUDIO LTD.

12 Avebury Court,
Mark Road,
Hemel Hempstead,
Herts. HP2 7TA,
U. K.
Tel. +44-(0)1442-260146
Fax +44-(0)1442-243766

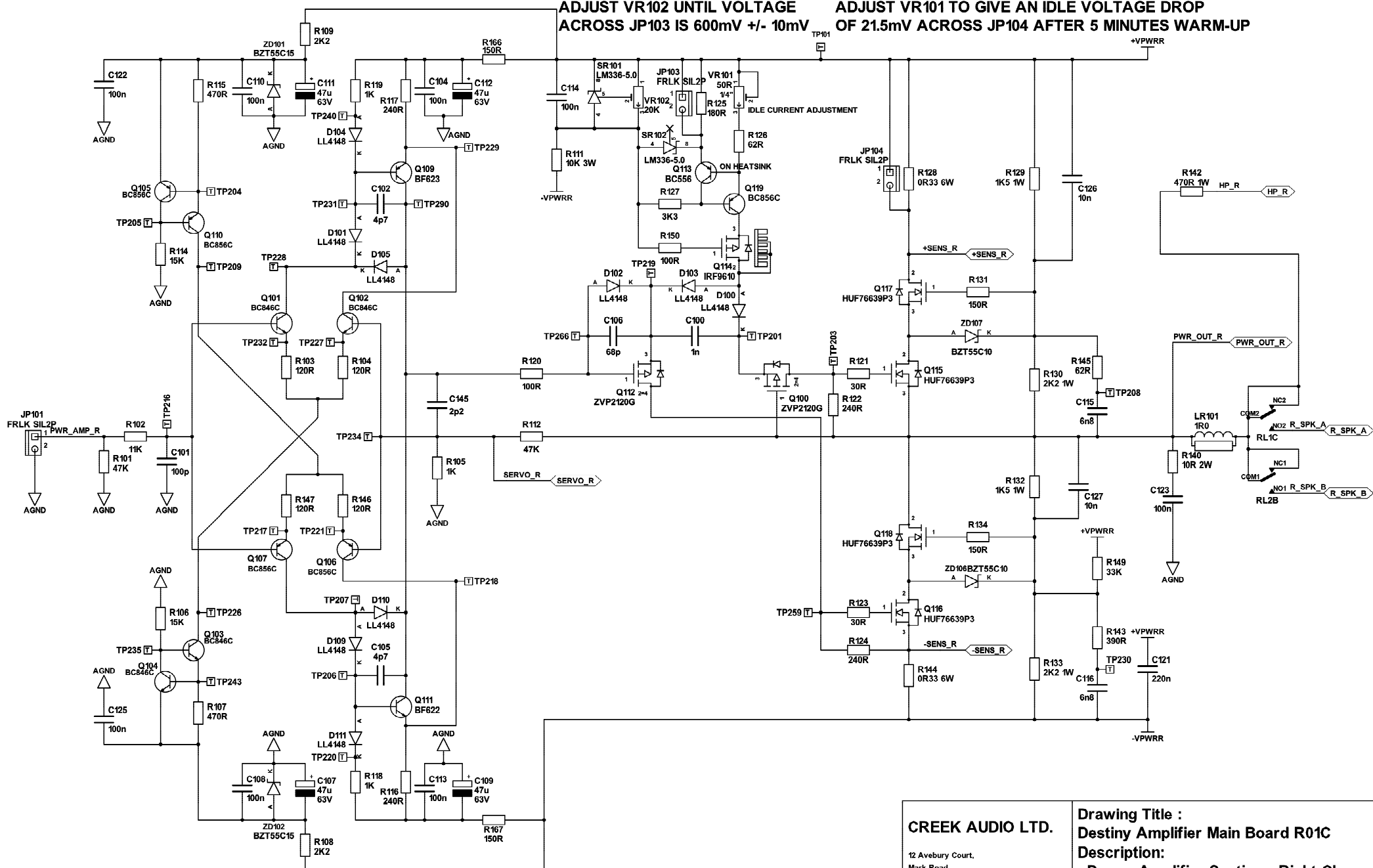
Drawing Title :
Destiny Amplifier Main Board R01C
Description:
Power Amplifier Section - Left Channel

Drawn by: Santo Prattico

PAGE : 2 OF 7
DATE : 22nd August 2008

ADJUST VR102 UNTIL VOLTAGE
ACROSS JP103 IS 600mV +/- 10mV

ADJUST VR101 TO GIVE AN IDLE VOLTAGE DROP
OF 21.5mV ACROSS JP104 AFTER 5 MINUTES WARM-UP



CREEK AUDIO LTD.

12 Avebury Court,
Mark Road,
Hemel Hempstead,
Herts. HP2 7TA,
U.K.
Tel. +44-(0)1442-260146
Fax +44-(0)1442-243766

Drawing Title :
Destiny Amplifier Main Board R01C
Description:
Power Amplifier Section - Right Channel

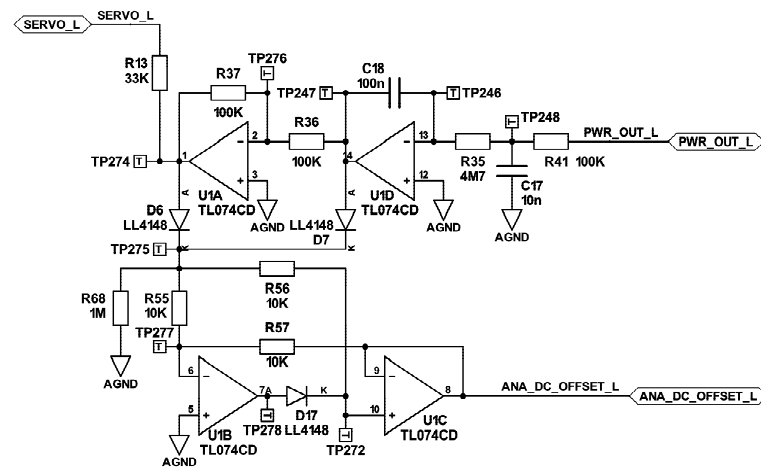
Drawn by: Santo Prattico

PAGE : 3 OF 7

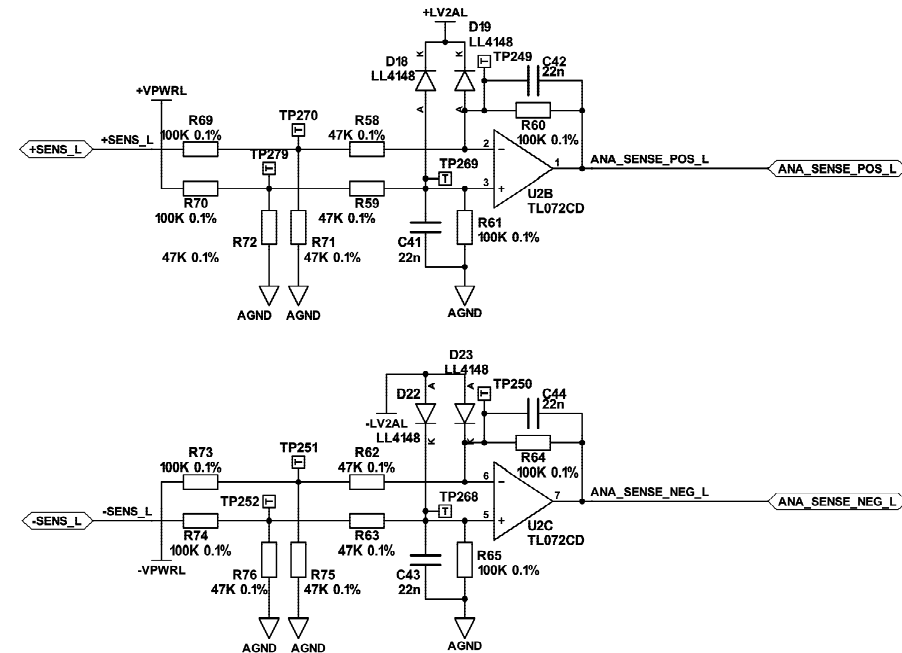
DATE : 22nd August 2008

Version 3.0 22/08/08: ADDED ADJUSTMENT DETAILS

DC SERVO



POWER AMPLIFIER CURRENT SENSE



ALL RESISTORS ARE 1 PERCENT TOLERANCE UNLESS OTHERWISE SPECIFIED

CREEK AUDIO LTD.

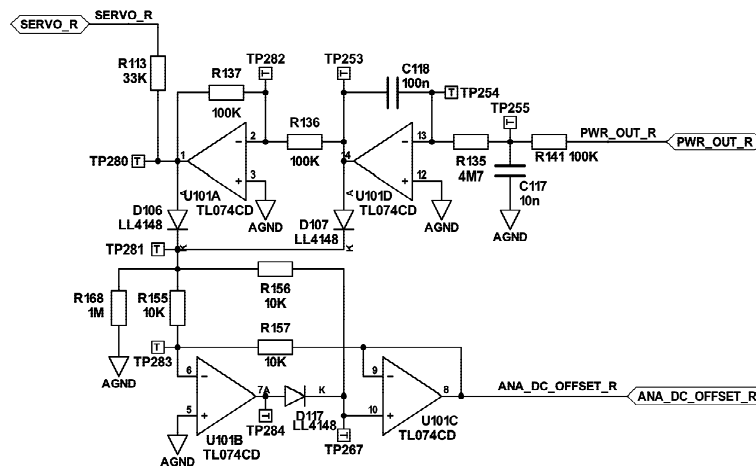
12 Avebury Court,
Mark Road,
Hemel Hempstead,
Herts. HP2 7TA,
U. K.
Tel. +44-(0)1442-260146
Fax +44-(0)1442-243766

Drawing Title :
Destiny Amplifier Main Board R01C
Description:
Signal conditioning - Left channel

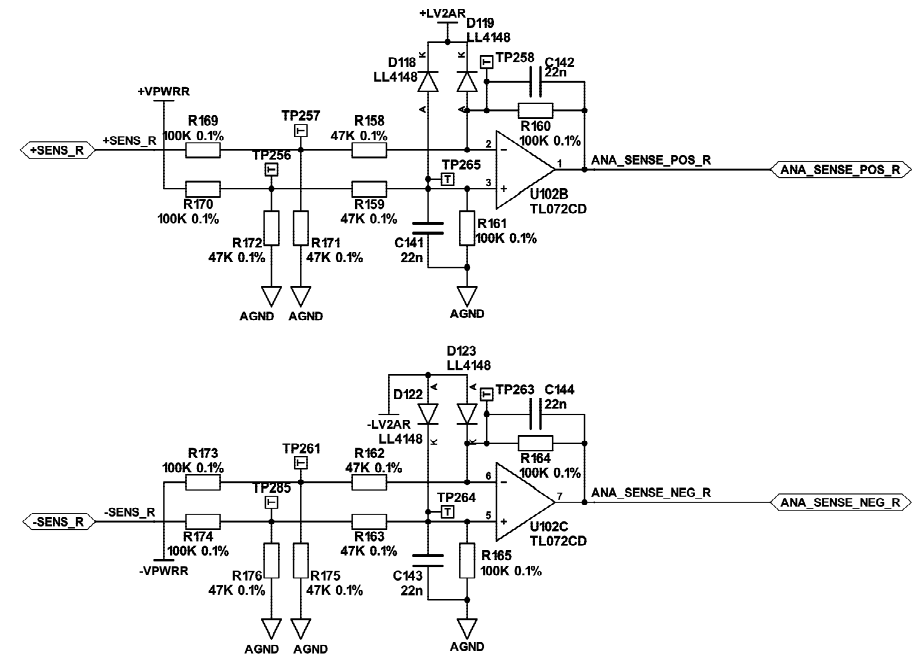
Drawn by: Santo Praticco

PAGE : 4 OF 7
DATE : 22nd August 2008

DC SERVO



POWER AMPLIFIER CURRENT SENSE



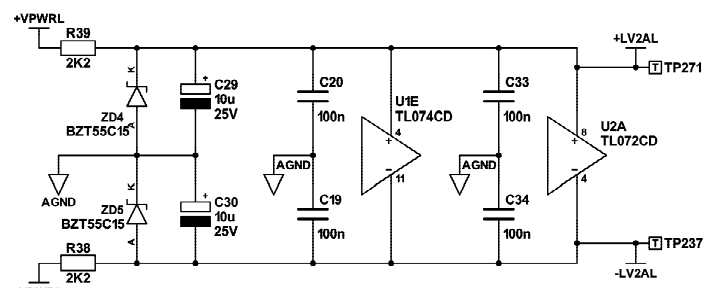
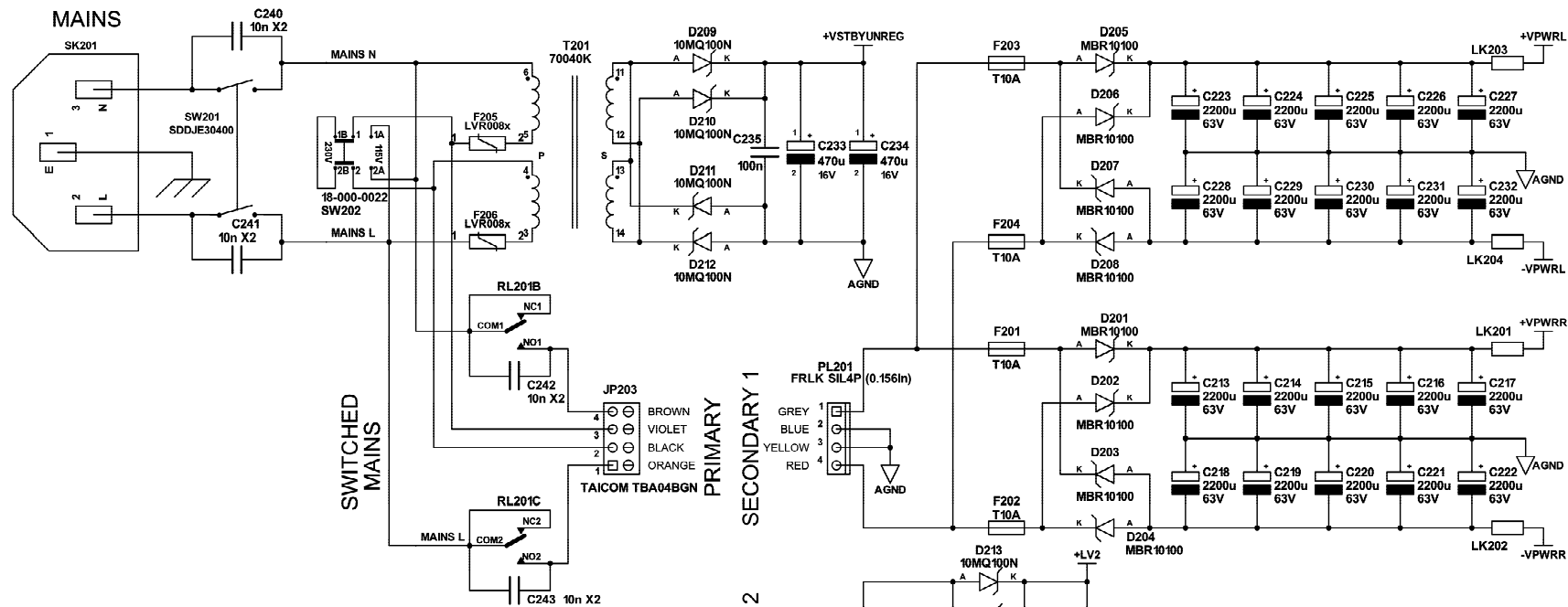
CREEK AUDIO LTD.

12 Avebury Court,
Mark Road,
Hemel Hempstead,
Herts. HP2 7TA,
U. K.
Tel. +44-(0)1442-260146
Fax +44-(0)1442-243766

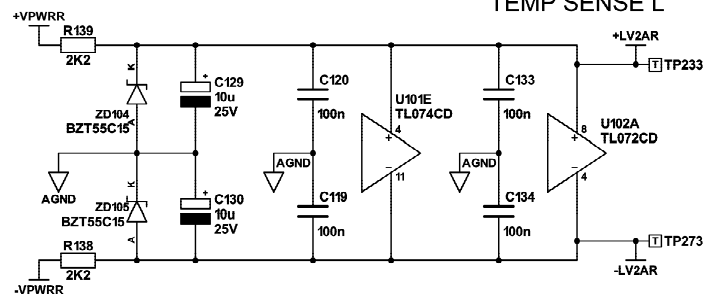
Drawing Title :
Destiny Amplifier Main Board R01C
Description:
Signal conditioning - Right channel

Drawn by: Santo Praticco

PAGE : 5 OF 7
DATE : 22nd August 2008



DC SERVO L CURRENT SENSE L
TEMP SENSE L



DC SERVO R CURRENT SENSE R
TEMP SENSE R

Version 3.0 22/08/08: ADDED ADJUSTMENT DETAILS

CREEK AUDIO LTD.

12 Avebury Court,
Mark Road,
Hemel Hempstead,
Herts. HP2 7TA,
U. K.
Tel. +44-(0)1442-260146
Fax +44-(0)1442-243766

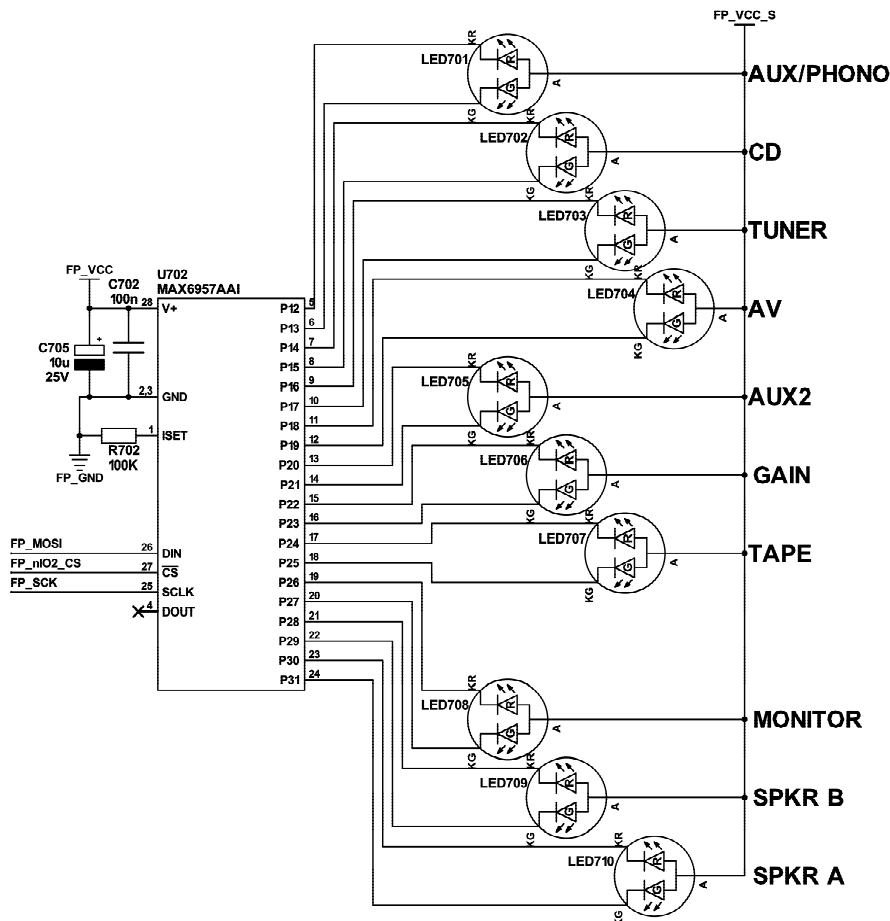
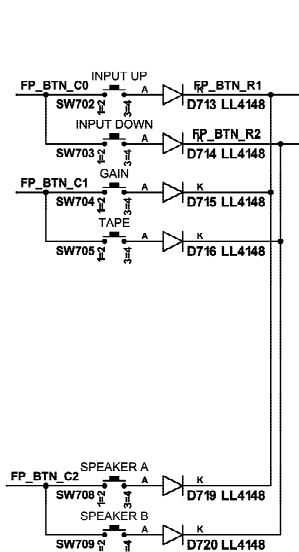
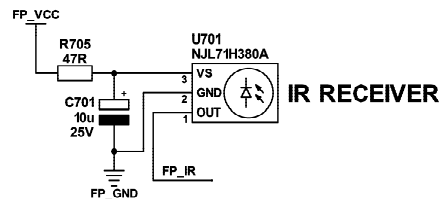
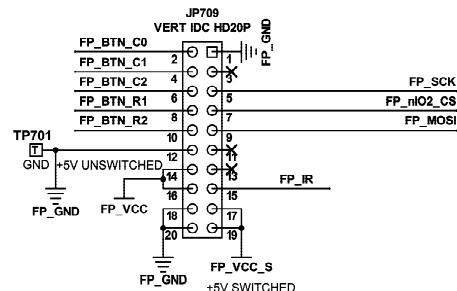
Drawing Title :
Destiny Amplifier Main Board R01C

Description:
Power supplies

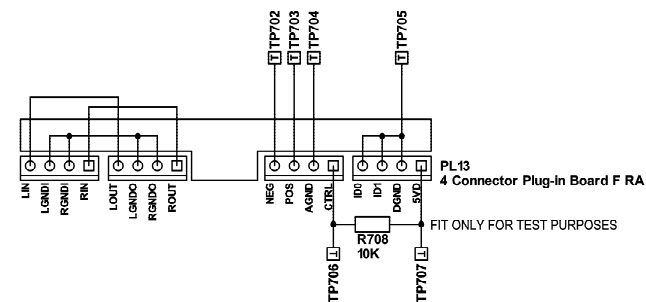
Drawn by: Santo Praticco

PAGE : 6 OF 7

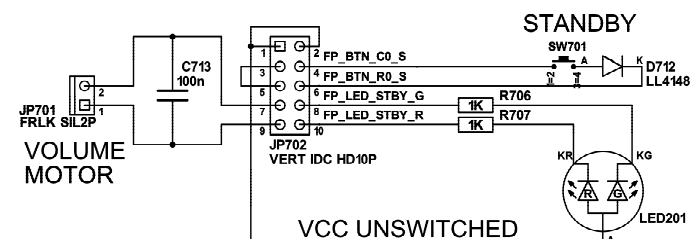
DATE : 22nd August 2008



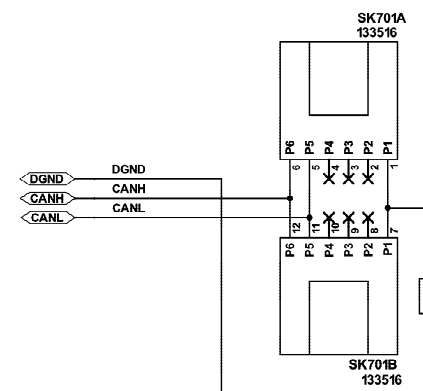
FRONT PANEL



AUX/PHONO BRIDGE & TEST BOARD



STANDBY BOARD



CREEK LINK

CREEK AUDIO LTD.

12 Avebury Court,
Mark Road,
Hemel Hempstead,
Herts. HP2 7TA,
U. K.
Tel. +44-(0)1442-260146
Fax +44-(0)1442-243766

Drawing Title :
Destiny Amplifier Main Board R01C
Description:
Auxiliary PCBs

Drawn by: Santo Praticco

PAGE : 7 OF 7

DATE : 22nd August 2008