

Celestion



Loudspeakers for the Perfectionist

The HF1300 Mk II

MAGNET SYSTEM 10,000 GAUSS

Technical specification

Frequency response: * 2kHz to 15kHz ± 2 dB.

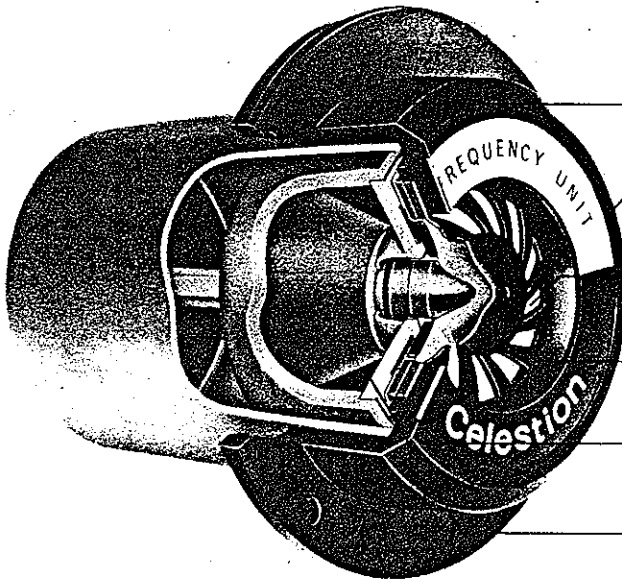
Impedance: 15 ohms or 8 ohms.

Power handling capacity: 5W RMS (continuous sine wave) For use with systems with an amplifier up to 60 watts provided crossover is at 2.5 kHz and third order.

Treble loudspeaker.

This high fidelity, high frequency loudspeaker with optimum response in the range 2 kHz 15 kHz, has been directly developed from the Celestion HF1300 as used for several years by the BBC and professional sound engineers. It maintains the same fine acoustical standards, and has been restyled to give easy and accurate mounting.

IND 15A, 0.19 mH.



Flange mounting for minimum diffraction and tunnel effect.

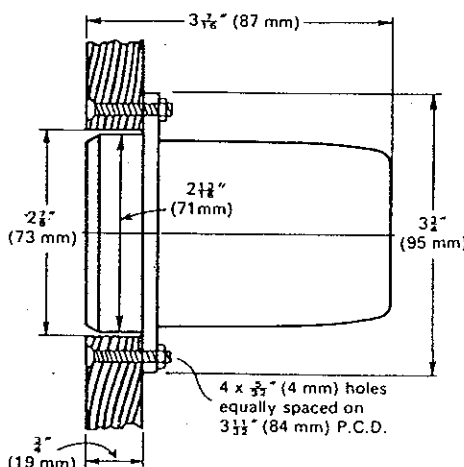
Phase correction plate for level frequency response and uniform treble dispersion.

Self-aligning, precision moulded, diaphragm for consistent performance.

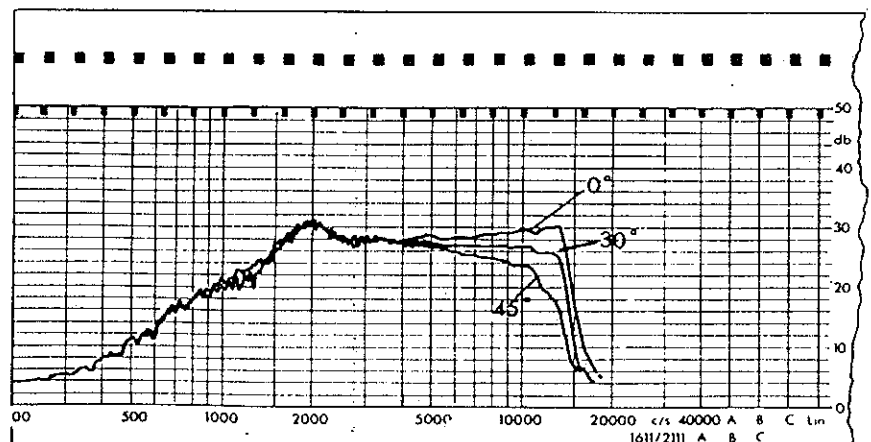
Contoured pole piece to pressure load diaphragm for extended high frequency response

Highly damped acoustic cavity to eliminate fundamental diaphragm resonance.

High flux magnet for high efficiency and excellent transient response.



Typical response curve – taken on axis and at 30° and 45°



Note: The rear mounting fixing flange is designed to enable the front of the loudspeaker to be flush with the mounting board, thus obviating "tunnel" effects.