

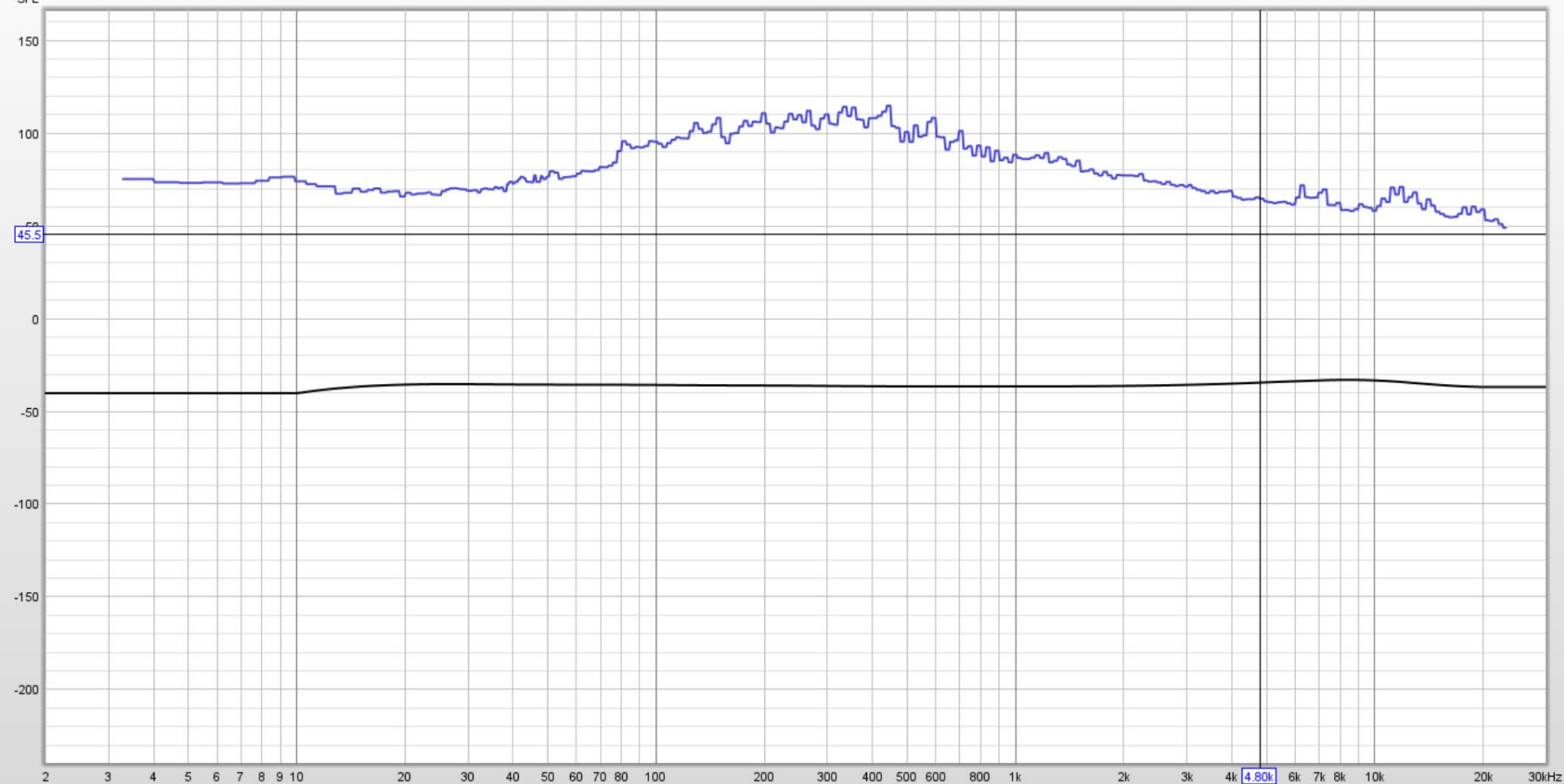
Collapse <<

1	Aug 21 0:02:05	✕
2	Aug 21 0:02:07	✕
3	Aug 21 0:02:21	✕
4	Aug 21 0:02:21 peak	✕
5	Aug 21 0:02:27	✕
6	Aug 21 0:03:45	✕
7	Aug 21 0:03:49	✕
8	Aug 21 0:03:50	✕
9	Aug 21 0:03:50	✕
10	Aug 21 0:03:51 peak	✕
11	Aug 21 0:03:52	✕
12	Aug 21 0:03:52 peak	✕
13	JOE.mdat Aug 21, 2022 12:03:52 AM Mic/Meter: 7100531.txt Soundcard: N/A	✕
Peak data from 65536-point 1/24 octave RTA using Hann window and no averaging		
14	Aug 21 0:04:34	✕
15	Aug 21 0:04:35	✕
16	Aug 21 0:04:37	✕
17	Aug 21 0:04:37	✕
18	Aug 21 0:04:38	✕
19	Aug 21 0:04:39 peak	✕
20	Aug 21 0:04:39 peak	✕
21	Aug 21 0:02:05	✕

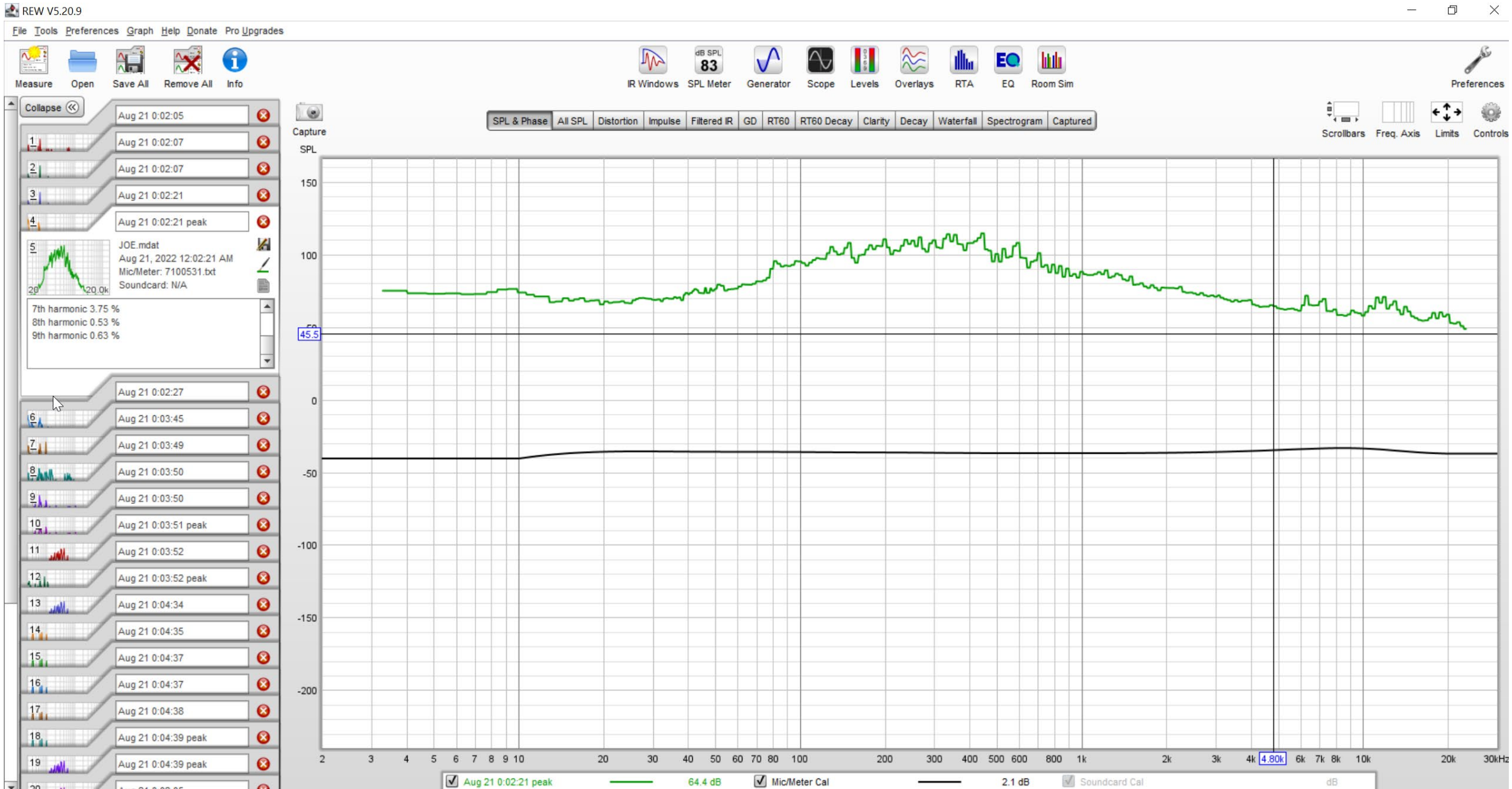
Capture
SPL

SPL & Phase All SPL Distortion Impulse Filtered IR GD RT60 RT60 Decay Clarity Decay Waterfall Spectrogram Captured

Scrollbars Freq. Axis Limits Controls



Aug 21 0:03:52 peak 64.4 dB Mic/Meter Cal 2.1 dB Soundcard Cal dB





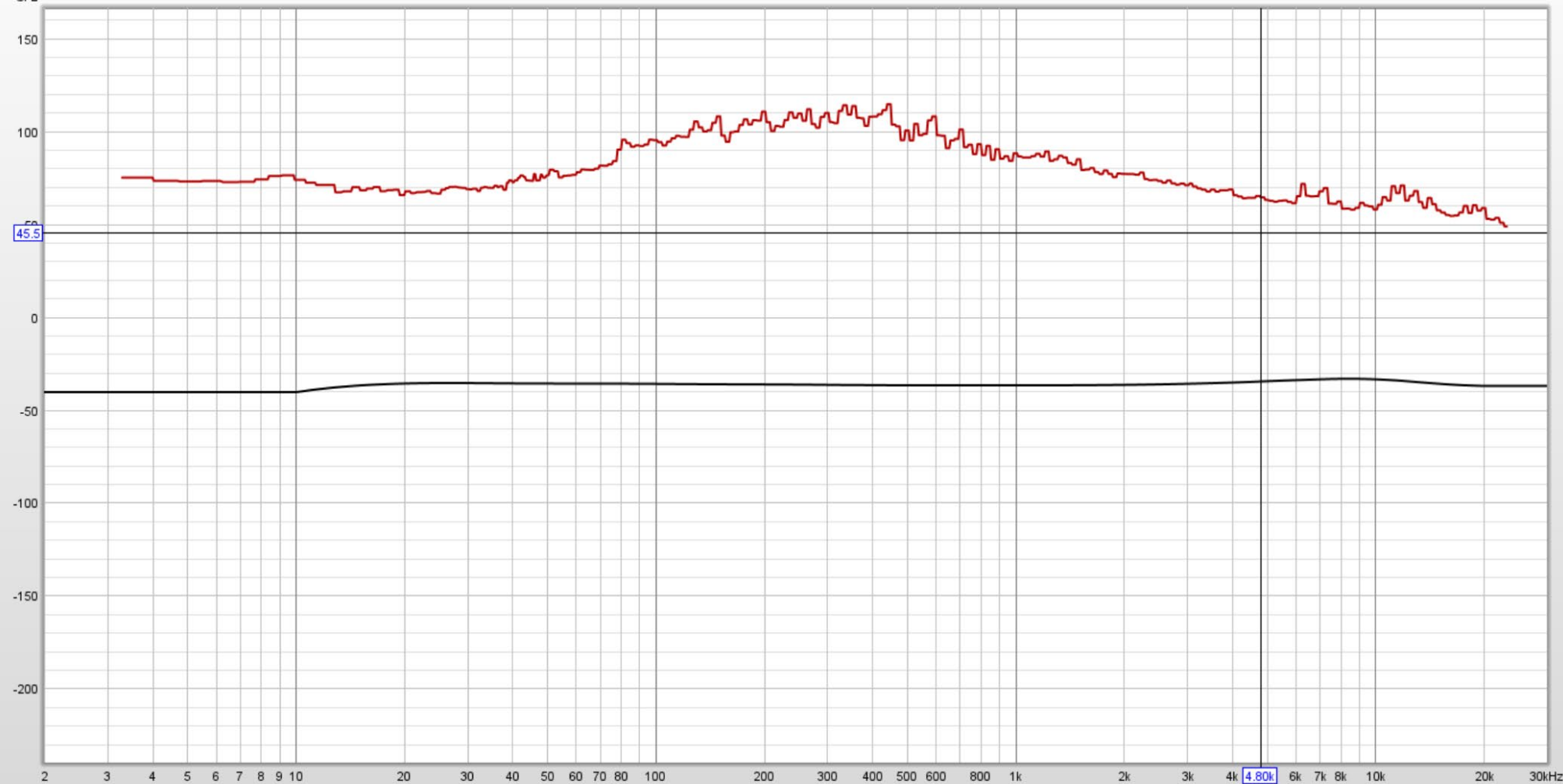
Collapse <<

1	Aug 21 0:02:05	✕
2	Aug 21 0:02:07	✕
3	Aug 21 0:02:21	✕
4	Aug 21 0:02:21 peak	✕
5	Aug 21 0:02:27	✕
6	Aug 21 0:03:45	✕
7	Aug 21 0:03:49	✕
8	Aug 21 0:03:50	✕
9	Aug 21 0:03:50	✕
10	Aug 21 0:03:51 peak	✕
11	JOE.mdat Aug 21, 2022 12:03:51 AM Mic/Meter: 7100531.txt Soundcard: N/A	✕
12	Aug 21 0:03:52	✕
13	Aug 21 0:03:52 peak	✕
14	Aug 21 0:04:34	✕
15	Aug 21 0:04:37	✕
16	Aug 21 0:04:37	✕
17	Aug 21 0:04:38	✕
18	Aug 21 0:04:39 peak	✕
19	Aug 21 0:04:39 peak	✕
20	Aug 21 0:02:05	✕

7th harmonic 8.98 %
8th harmonic 5.83 %
9th harmonic 3.53 %

Capture
SPL

SPL & Phase All SPL Distortion Impulse Filtered IR GD RT60 RT60 Decay Clarity Decay Waterfall Spectrogram Captured

☒ Aug 21 0:03:51 peak

64.4 dB

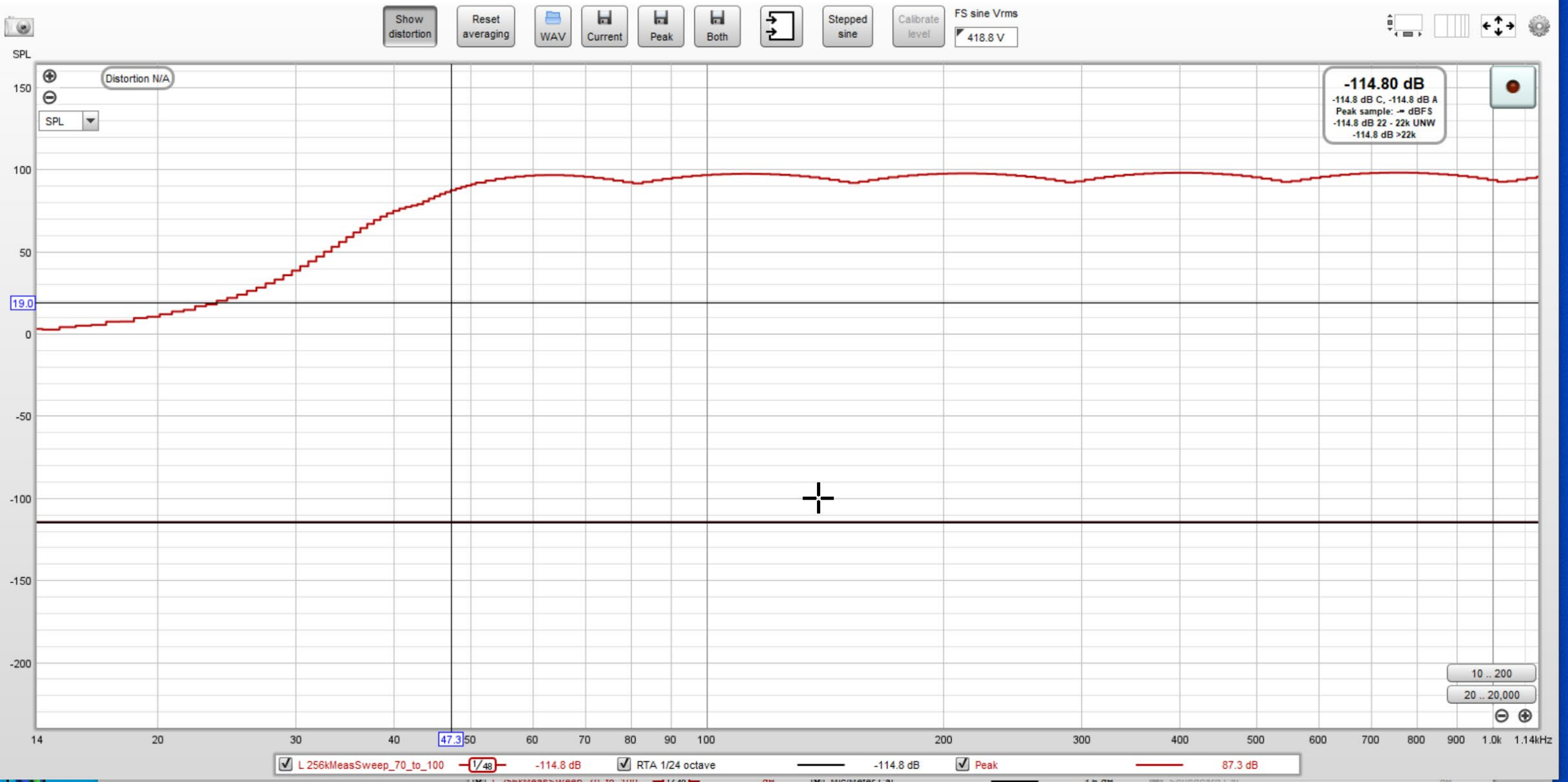
☒ Mic/Meter Cal

2.1 dB

☒ Soundcard Cal

dB

MICROPHONE (Master Volume) R on Microphone (Umk-1 Gain: 18dB) at 48 kHz, 65,536-point RTA 1/24 octave, Hann window, 50% overlap, no averaging

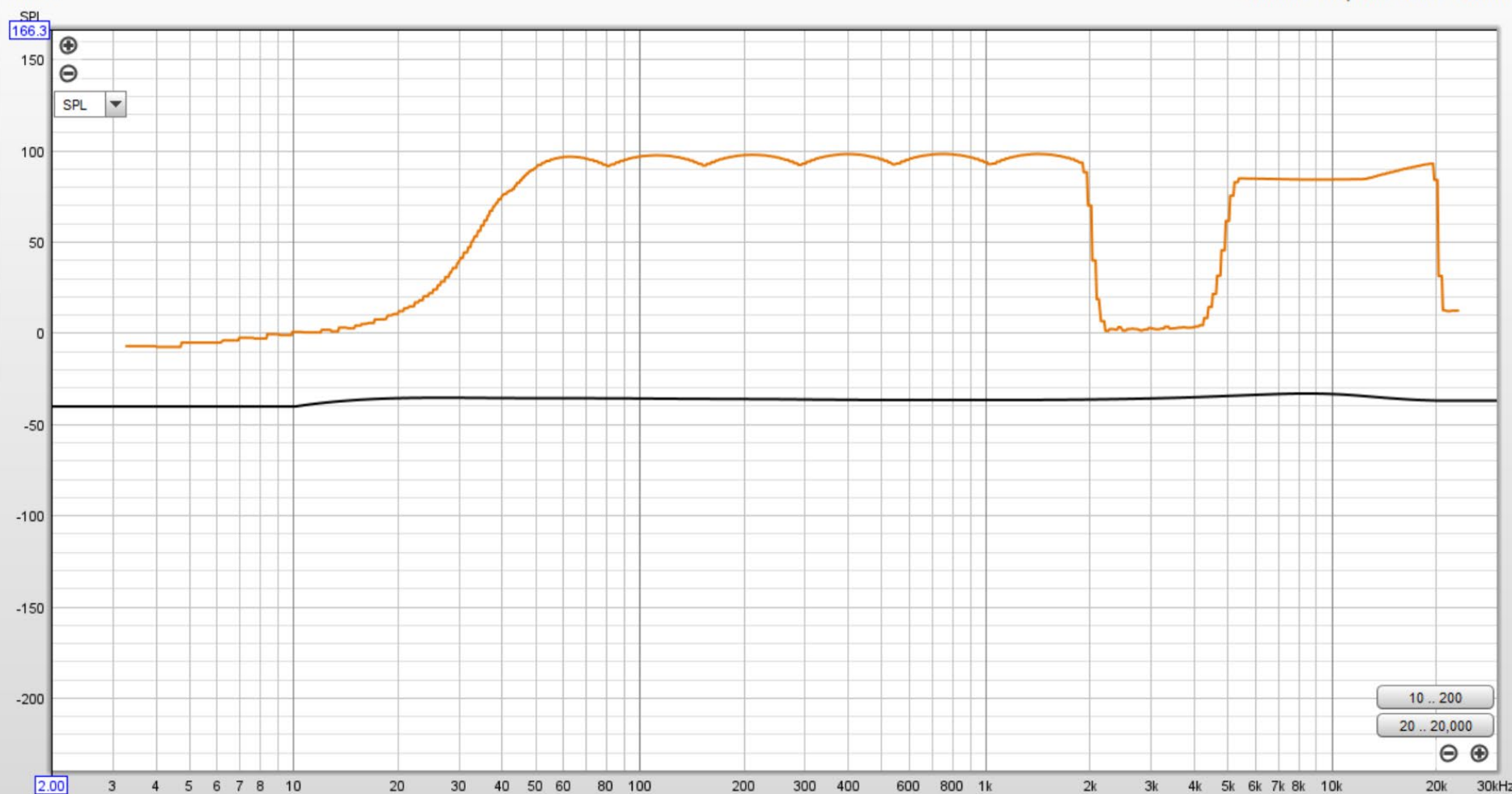
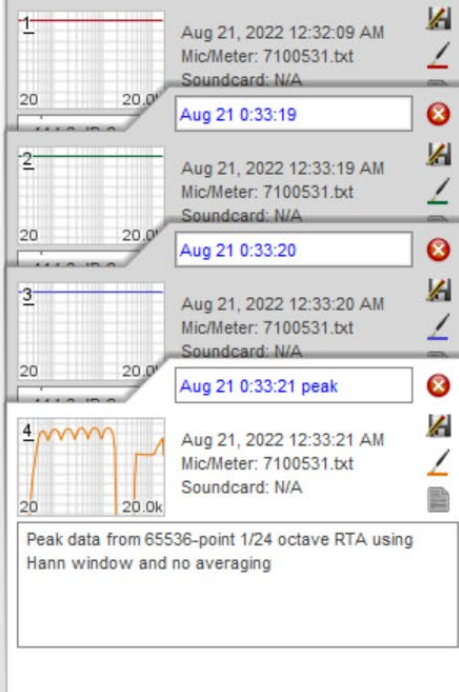


256kMeasSweep 70 to 100



Capture

SPL & Phase	All SPL	Distortion	Impulse	Filtered IR	GD	RT60	RT60 Decay	Clarity	Decay	Waterfall	Spectrogram	Captured
-------------	---------	------------	---------	-------------	----	------	------------	---------	-------	-----------	-------------	----------



☒ Aug 21 0:33:21 peak

1/48

dB

☒ Mic/Meter Cal

-3.6 dB

☒ Soundcard Cal

10 .. 200

20 .. 20,000

90/194MB	48000 Hz	16 Bit	XXXX XXXX XXXX XXXX 0000 0000	Peak input before clipping 125 dB SPL
----------	----------	--------	-------------------------------	---------------------------------------

dB



