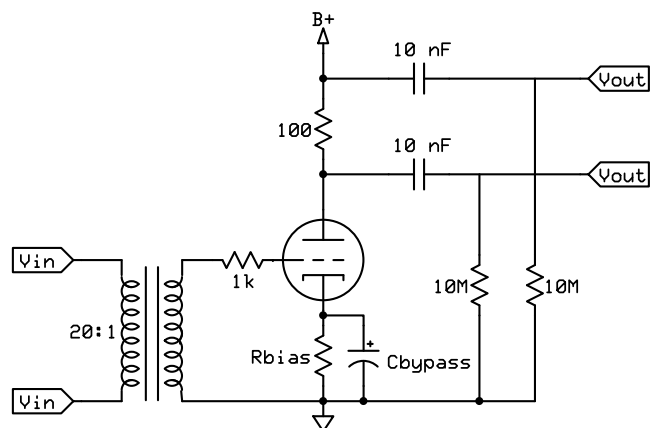


B+ and CCS set such that idle current is identical for each test



$$\begin{aligned} g_m \text{ (micromhos)} &= \mu A / V \\ &= V_{out} * (1E6/100) / V_{in} \\ &= V_{out} * 1E4 / V_{in} \end{aligned}$$

1X probe: 448K

10X probe: 4.7M

300B, 73mA (5500): 1184 11 2uF

46, 28mA (2350): 1048 11 2uF

6N6P, 22mA (11,200): 174 11 10uF

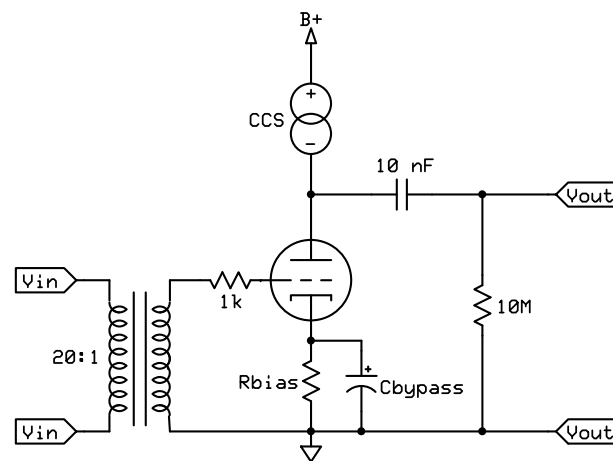
EL34, 45mA (11,500): 743 11 3uF (use with 300B)

6W6, 30mA (3800): 833 11 3uF (use with 300B)

12AU7, 6mA (2200): 11

12AT7, 2.2mA (5500): 11

12AX7, 1mA (1600): 11



$$\mu = V_{out} / V_{in}$$

$$R_p = \mu / (g_m/1E6)$$

## Tube Measurements