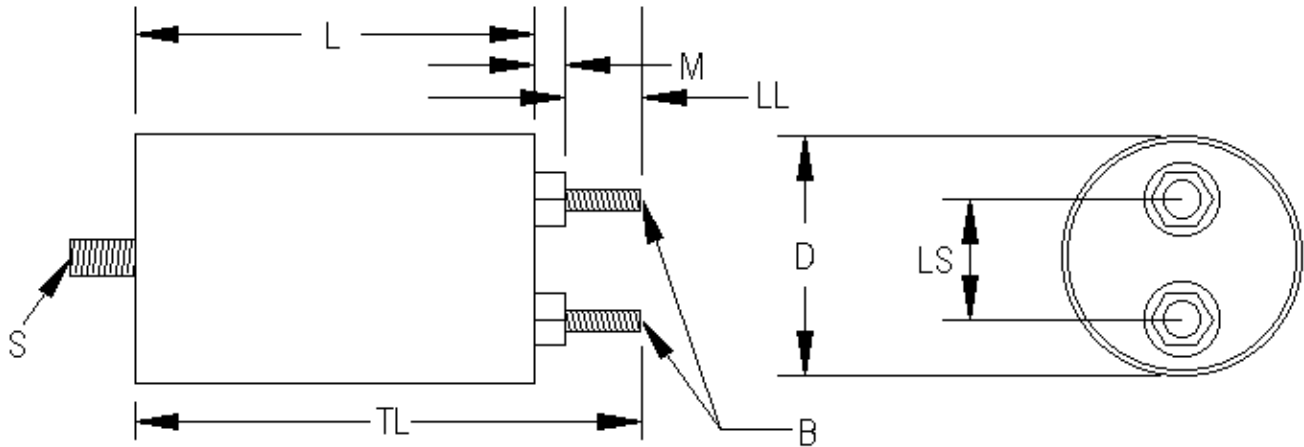


TYPE GLY513
METALLIZED POLYPROPYLENE
ALUMINUM CASE



--ROHS COMPLIANT--

1.0 PHYSICAL CHARACTERISTICS

1.1 CONSTRUCTION.....NON-INDUCTIVE WOUND METALLIZED POLYPROPYLENE.

1.2 CASE.....ALUMINUM CASE.

1.3 LEAD MATERIAL.....TINNED M6 BRASS STUDS.

1.4 DIMENSIONS.....
 $D = 3.000 \pm 0.032$
 $L = 5.500 \text{ MAX}$
 $M = 0.098 \text{ MAX}$
 $B = M6$
 $LS = 1.250 \pm 0.050$
 $LL = 0.620 \pm 0.032$
 $TL = 6.250 \text{ MAX}$
 $S = M12 (0.450 \text{ LENGTH})$

2.0 ELECTRICAL CHARACTERISTICS

2.1 CAPACITANCE..... $600 \text{ MF} \pm 10\%$ WHEN MEASURED AT OR REFERRED TO $1000 \pm 20 \text{ HZ}$ AND $25 \pm 5 \text{ }^{\circ}\text{C}$.

2.2 INSULATION RESISTANCE.....SHALL BE GREATER THAN 100 MEG-OHMS WHEN MEASURED AFTER 2 MINUTES ELECTRIFICATION AT 100 VDC AND $25 \pm 5 \text{ }^{\circ}\text{C}$.

2.3 DIELECTRIC STRENGTH..... 600 VDC FOR 1 MINUTE THROUGH A LIMITING RESISTANCE OF 100 OHMS/VOLT AT $25 \pm 5 \text{ }^{\circ}\text{C}$. (TERMINAL TO TERMINAL)
 2000 VDC FOR 1 MINUTE (TERMINAL TO CASE)

2.4 RATED VOLTAGE..... 500 VDC .

2.5 OPERATING TEMPERATURE..... -40°C TO $+85^{\circ}\text{C}$

2.6 CURRENT..... 45A AT 25°C , 36A AT 55°C

2.7 SERIES RESISTANCE..... 0.006 OHMS AT 100KHZ

NOTES: DRAWING NOT TO SCALE.
 ALL DIMENSIONS IN INCHES UNLESS OTHERWISE SPECIFIED.
 UNITS WILL BE SHIPPED WITH SHORTING BAR ACROSS TERMINALS.

CHIEF ENGR.	DATE	TITLE TYPE GLY513 METALLIZED POLYPROPYLENE HERMETICALLY SEALED --ROHS COMPLIANT--	<div><div>ASC</div><div>301 WEST "O" STREET OGALLALA, NE 69153 (308) 284-3611</div></div>		
ENGR					
CHK.					
BY					
C. POWERS	2/10/06				
			DIST	DWG. NO. 23A00447-1	REV.
			3B	SHEET 1 OF 1	B