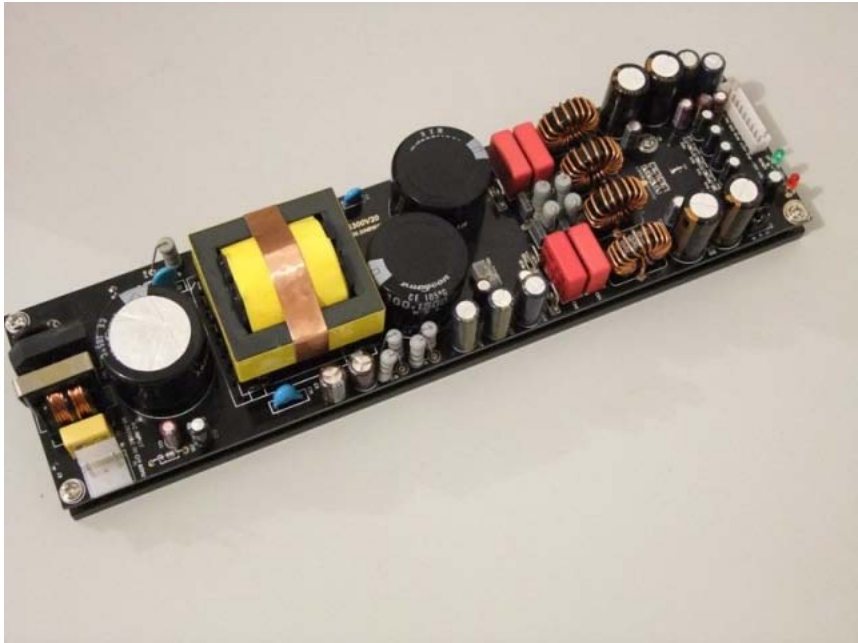


GENIUS300V20

2x150W Hi-Fi Class D Power Amplifier
Integrated SINEWAVE Switch Power Supply



Contents

General Description-----	2
Specification-----	3
Connect Diagram-----	4
Module Dimension-----	5
Notes-----	6
Connect Us-----	6

Version 1.0

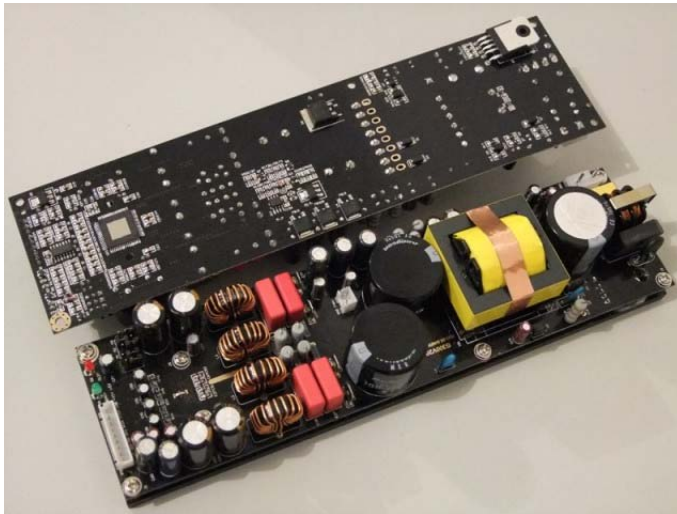
General Description

The SINEWAVE G300V20 is fully integrated, intelligent audio power conversion solution designed particularly for highly competitive consumer and professional audio products. The SINEWAVE G300V20 is EMC and safety approved and the "black-box" completeness allows for fast design-in and minimized time to market. Key benefits include:

- State-of-the-art, high efficiency SINEWAVE amplification stage based on the new type class d processing IC and high quality switching power supply
- An High Efficiency power Supply with selectable mains converter and separate aux converter.
- A wide set of features for plug and play implementation into applications such as active speakers or proaudio

Combined with the auxiliary supply for powering external circuitry It is the natural choice in such audio application that requires a compact, integrated power solution.

G300V20 is protected against short circuits, overload and over heating and includes on-board fuses and EMI filtering that provide a CE and FCC pre-approved design.



Specifications

Key Specifications

- 2* 150W @ 1% THD+N, 20Hz – 20kHz, 4 Ω
- 2* 250W @ 5% THD+N, 20Hz – 20kHz, 4 Ω
- THD+N = 0.003% @ 1W (4 Ω ,1kHz)
- 85 % total efficiency @ 100W output
- Regulated auxiliary power supply
- Auto adapt Mains 90-265V_{AC} 50 or 60 Hz

Key Features

- Fully integrated audio power solution
- Rugged construction
- Thermal protection
- Over current protection
- Sound optimized soft clipping
- Suitable for CE approved designs
- EMI conforms to: EN55013
EN55020
EN61000-3-2
EN61000-3-3

GENIUS SERIES INTERGRATE

Green energy

Excellent sound

Newest technology

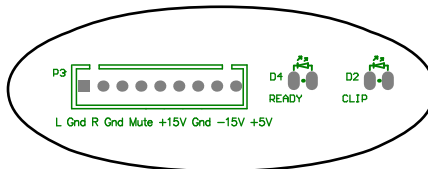
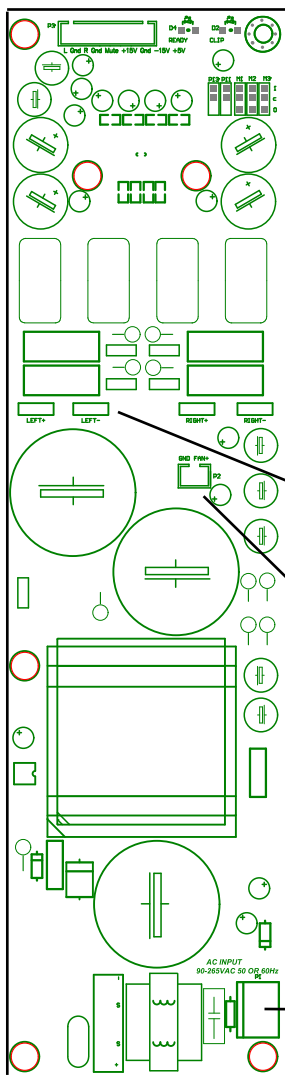
International power supply

Ultra low noise and high signal noise rate

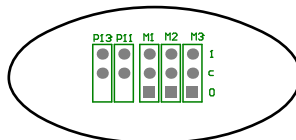
Supper quality from design to manufacture

Version 1.0

Connect Diagram

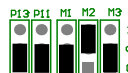


Input and indicator



Jumper Setting

2Channel Mode:

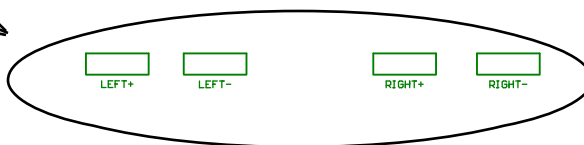


left and right input active

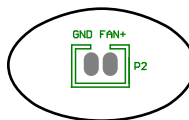
1Channel Mode:



Only left input active

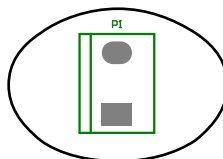


Speaker Connector



12V Brushless DC Fan(12V 200mA max)

Fan Connector



Ac Input:

90-265Vac 50 or 60Hz

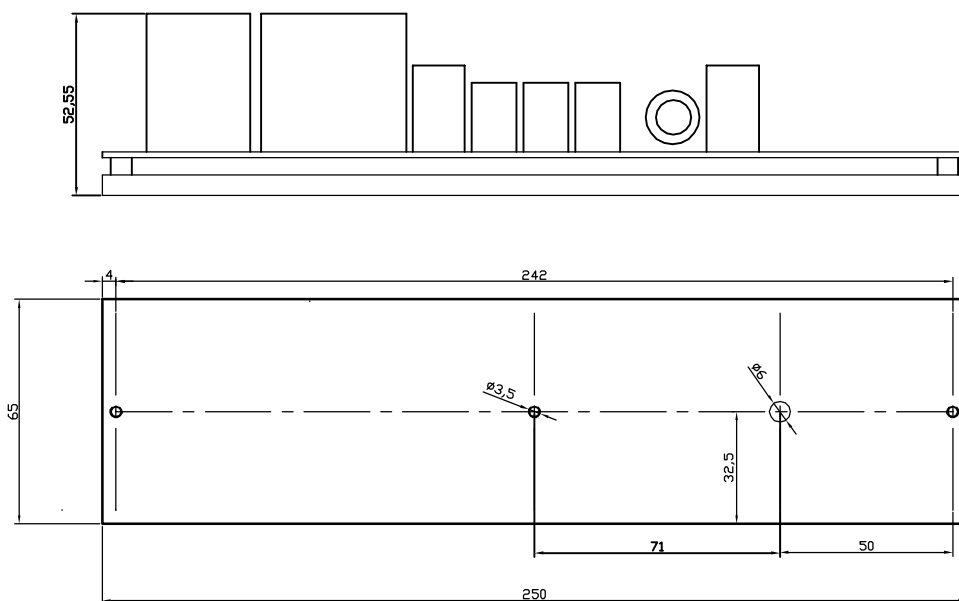
Attention:

T4A FUSE SEIRESED

AC Connector

Version 1.0

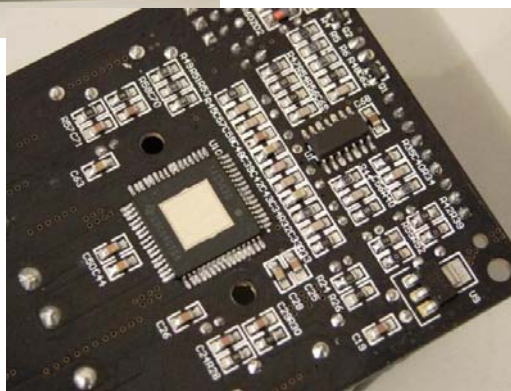
G300V20 Module Dimension:



Version 1.0

ATTENTIONS:

**SPEAKER LINE FORBID SHELL CONNETED!
HALF VOLTAGE EXISTING!**



www.csinewave.com

Mail:authxl@163.com

SineWave Electronics Co.,Limited