

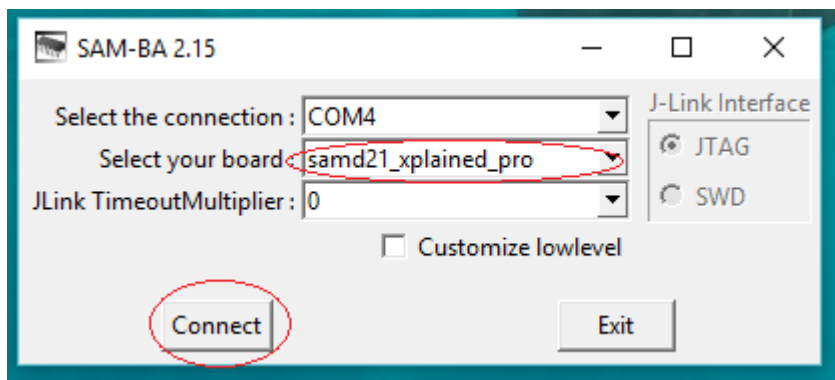
Frontpanel firmware upgrade description

To upgrade the firmware on the display for the preamp/dac the following items are needed:

1. USB to RS232 converter.
2. Install SAM-BA V2.15 from Atmel (www.atmel.com)
3. RS232 cable which is delivered with the kit. Put the 3 pin molex connector on the male RS232 connector next to the Frontpanel(DAC) connector on the backside.
4. Connect the RS232 cable female DSUB connector to the RS232 converter.

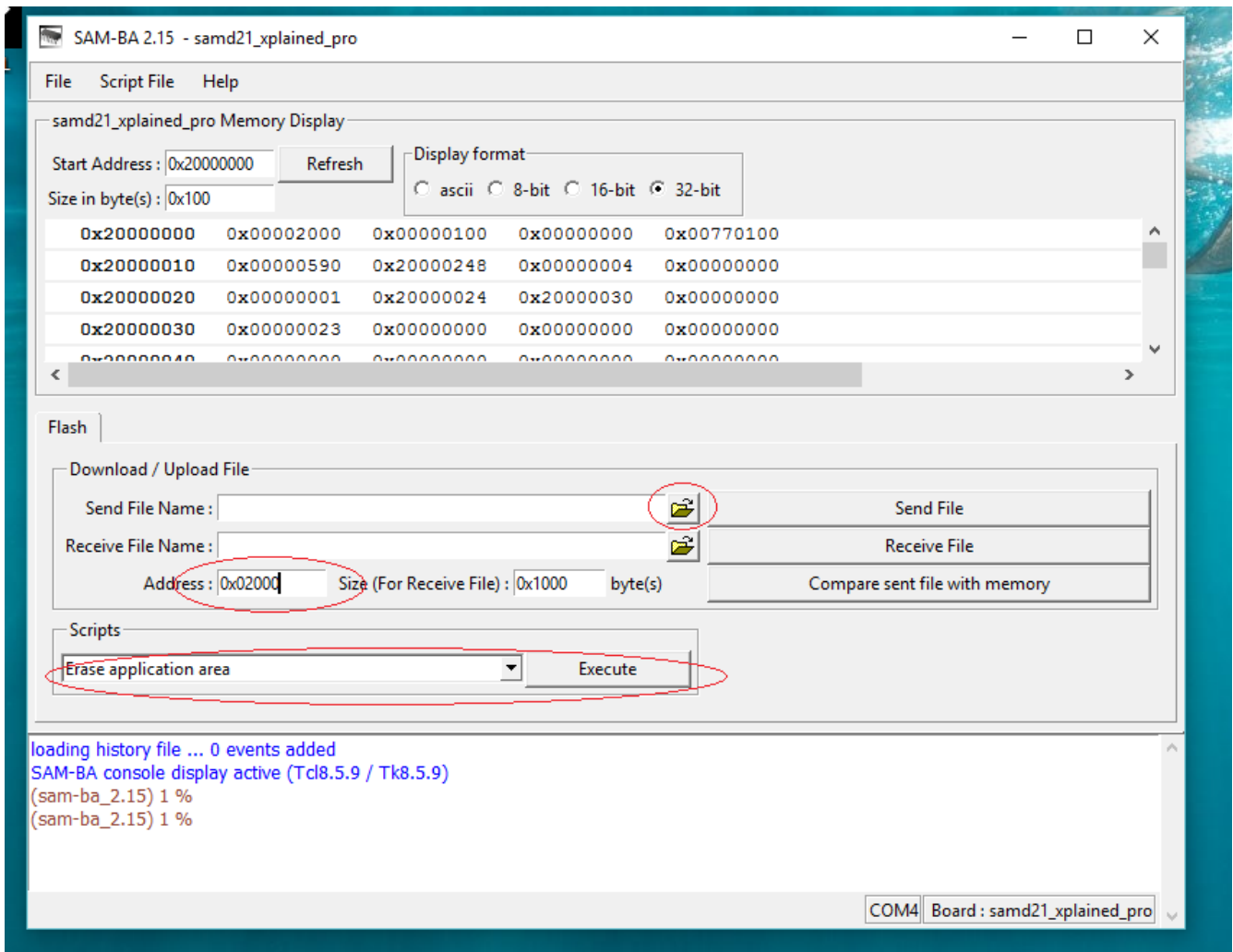
To upgrade the firmware button S4 in the right side beneath the display needs to be pressed during power on.

Next start the SAM-BA V2.15.



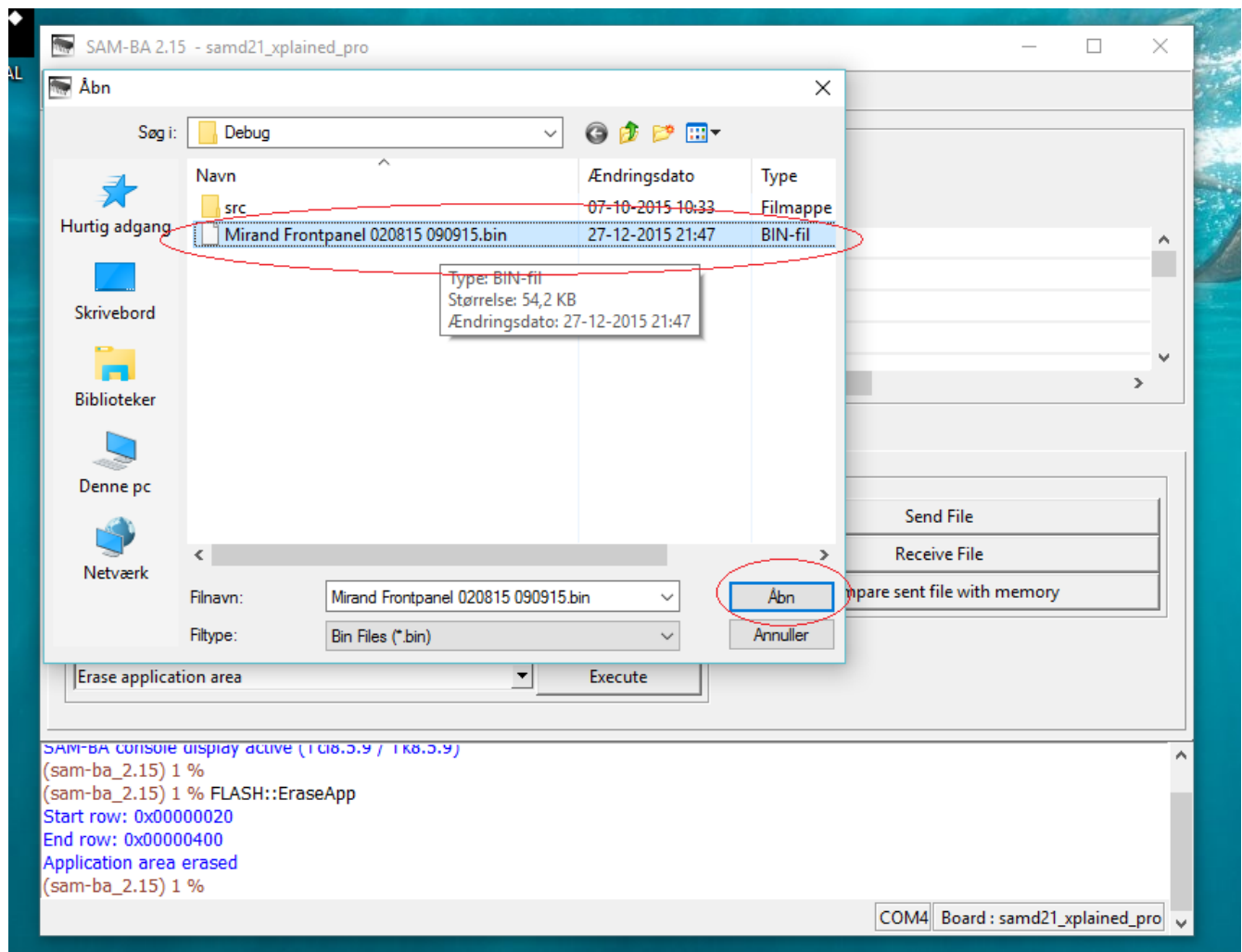
Choose samd21_xplained_pro from the “Select your board” pull down menu, Select the right connection (COM port) and press the “Connect” button.

The following will appear:



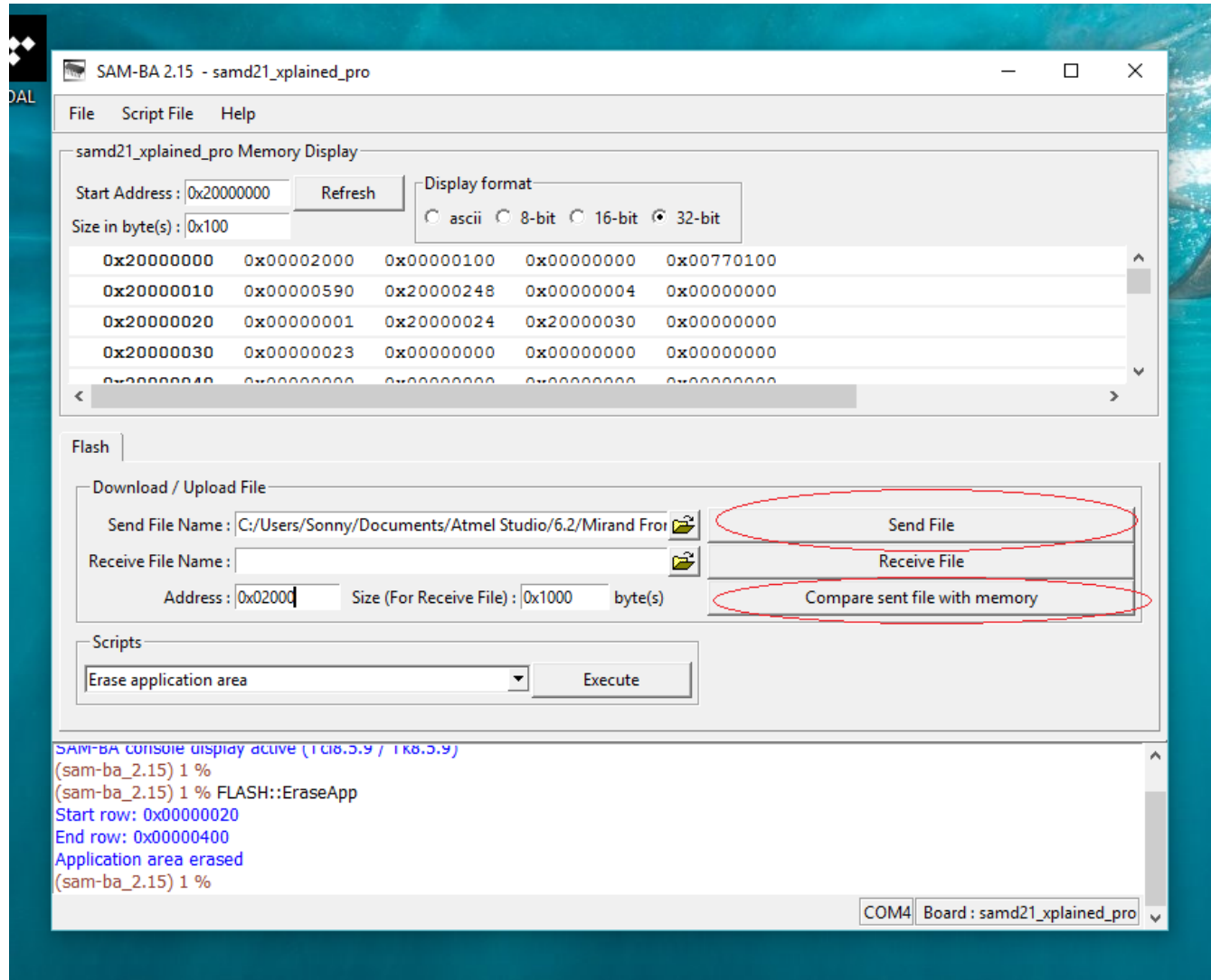
First step is to select address. It should be 0x02000. In field "Scripts" choose "Erase application area" and press "Execute" button.

Under Download/Upload File section, find the file that needs to be send under "Send File Name"



Select the .bin file and press "open" (Åbn in the picture above).

Press the “Send File” button to transfer the new firmware.



After that press “Compare sent file with memory” .. It should match.