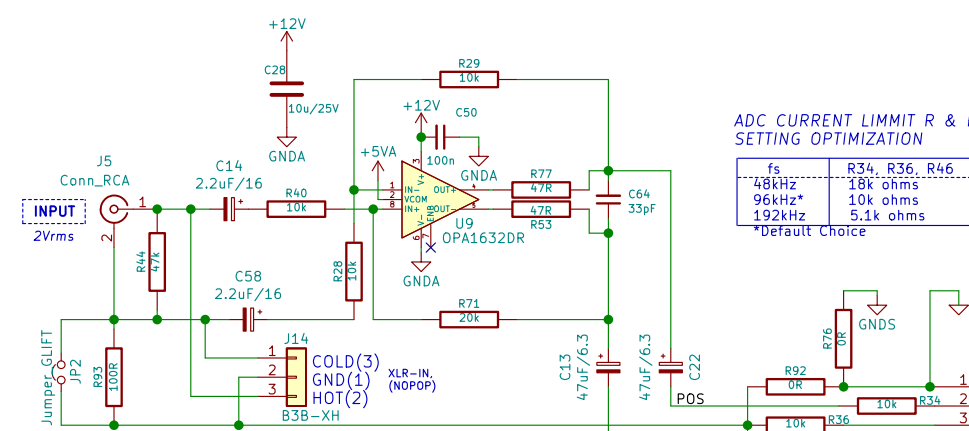
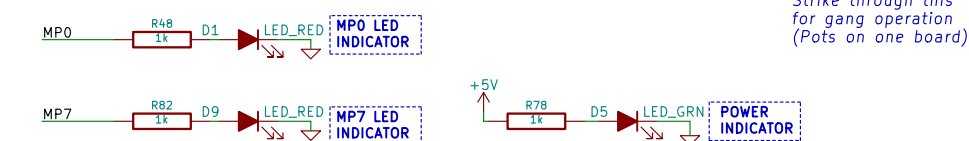
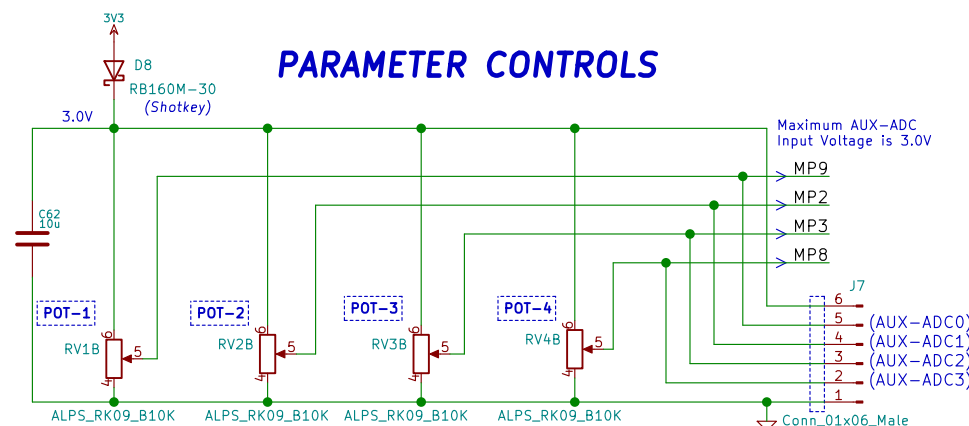
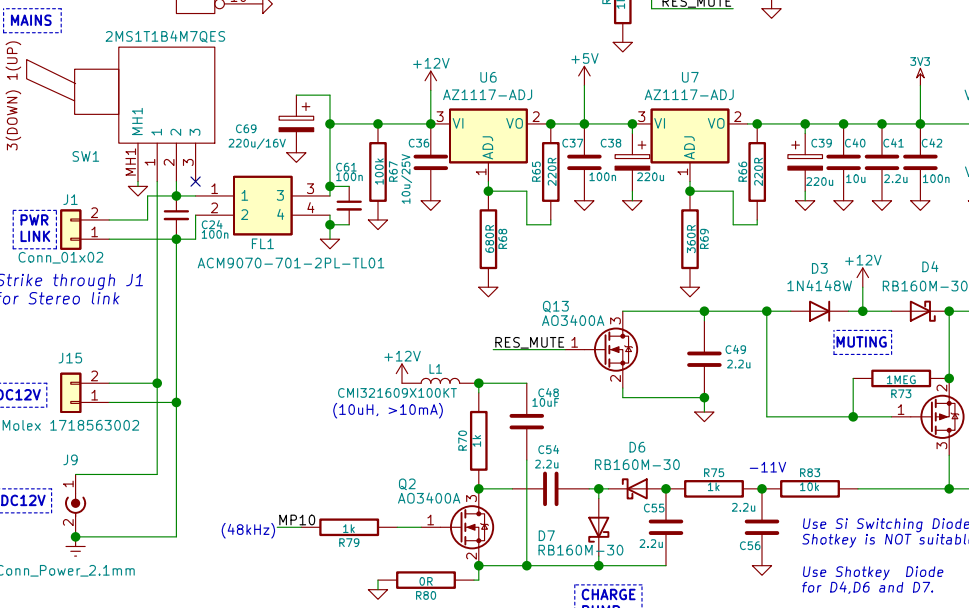
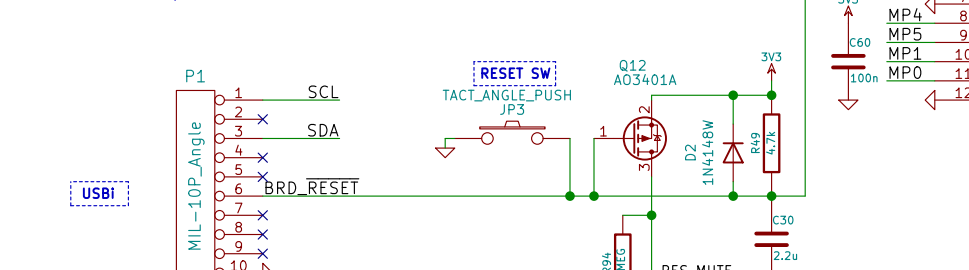


PARAMETER CONTROLS



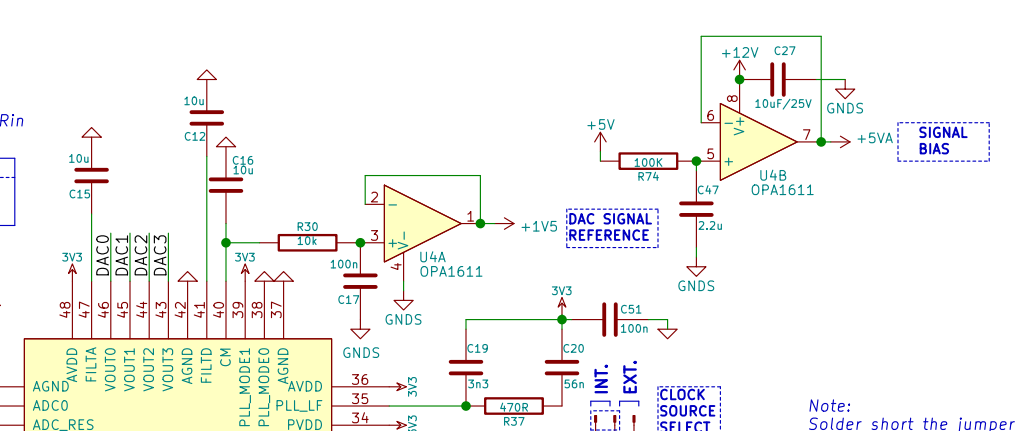
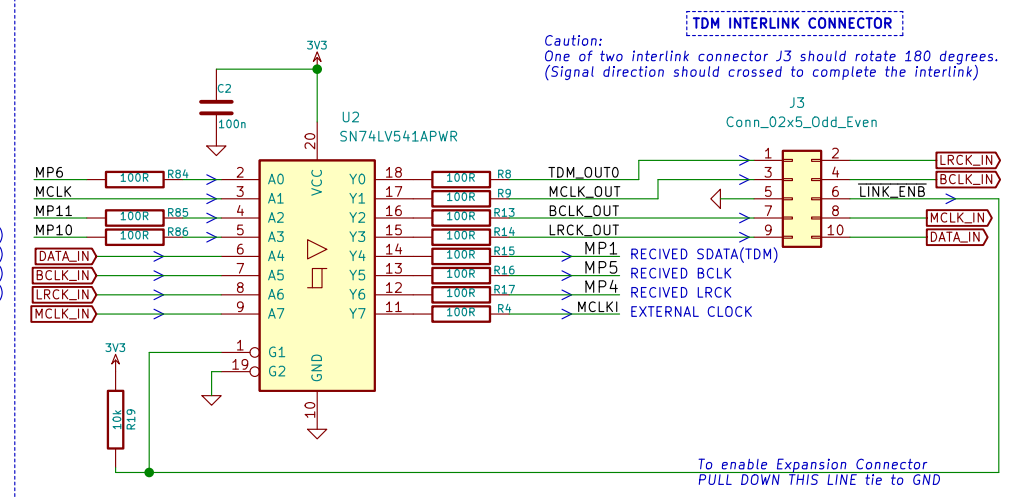
Note: Open JP2 to enable the Differential-Input feature



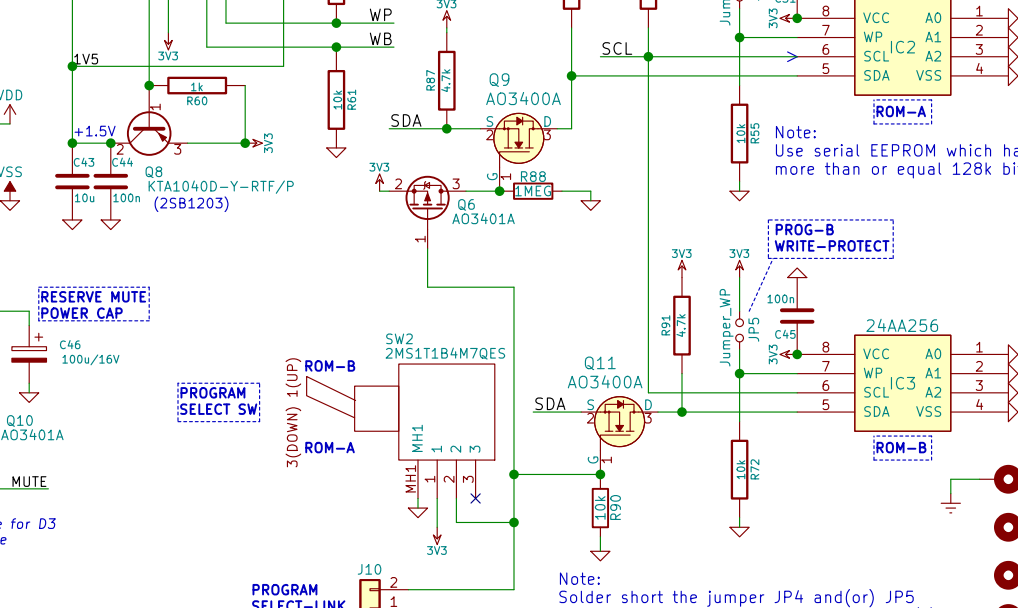
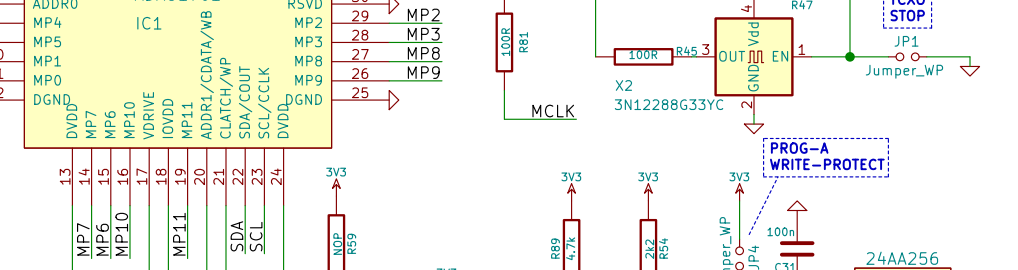
Use SI Switching Diode for D3 Shotkey is NOT suitable

Use Shotkey Diode for D4,D6 and D7.

OPTIONAL PART FOR TDM-INTERLINK



Note: Solder short the jumper JP1 if the Slave-Clocking Selected (as EXT.)



Note: Solder short the jumper JP4 and(or) JP5 when you need to write protect the code(s).

