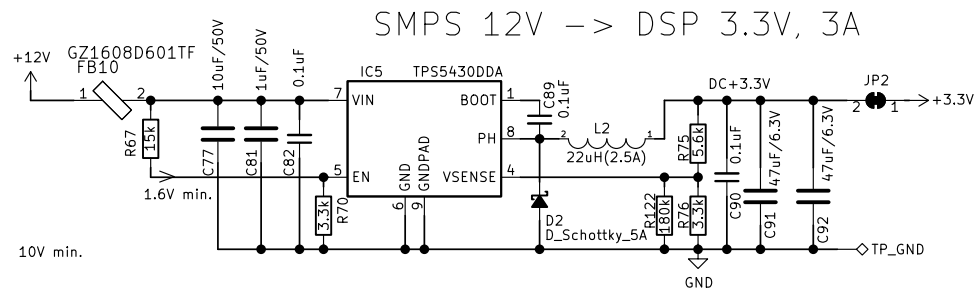
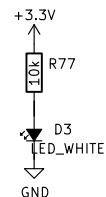


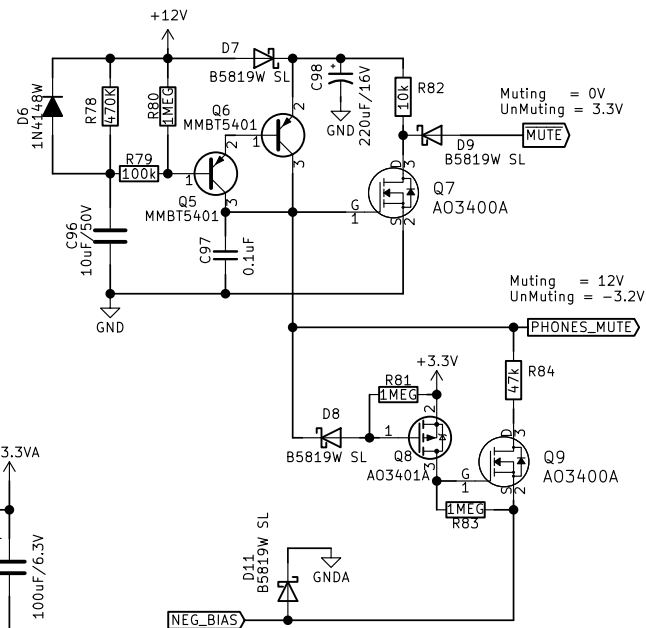
DC12V JP1 2 1 → +12V



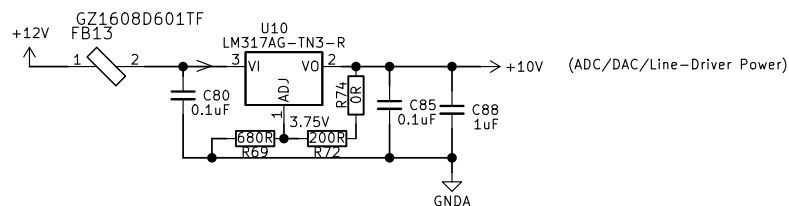
POWER INDICATOR



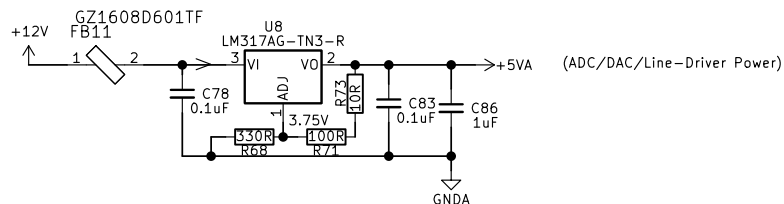
Power ON/OFF Mute Driver



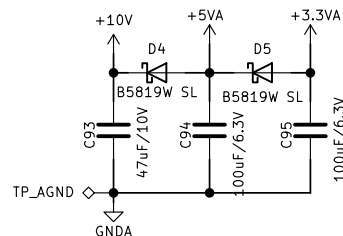
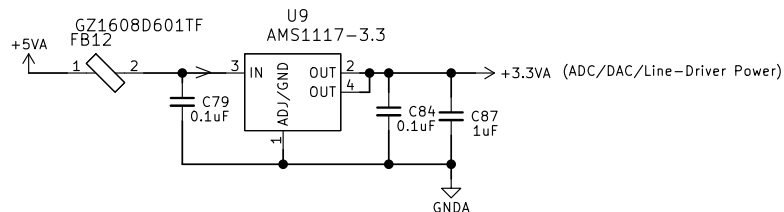
REG12V → ANALOG 10.0V



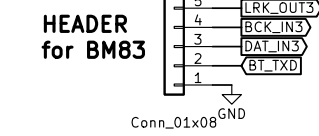
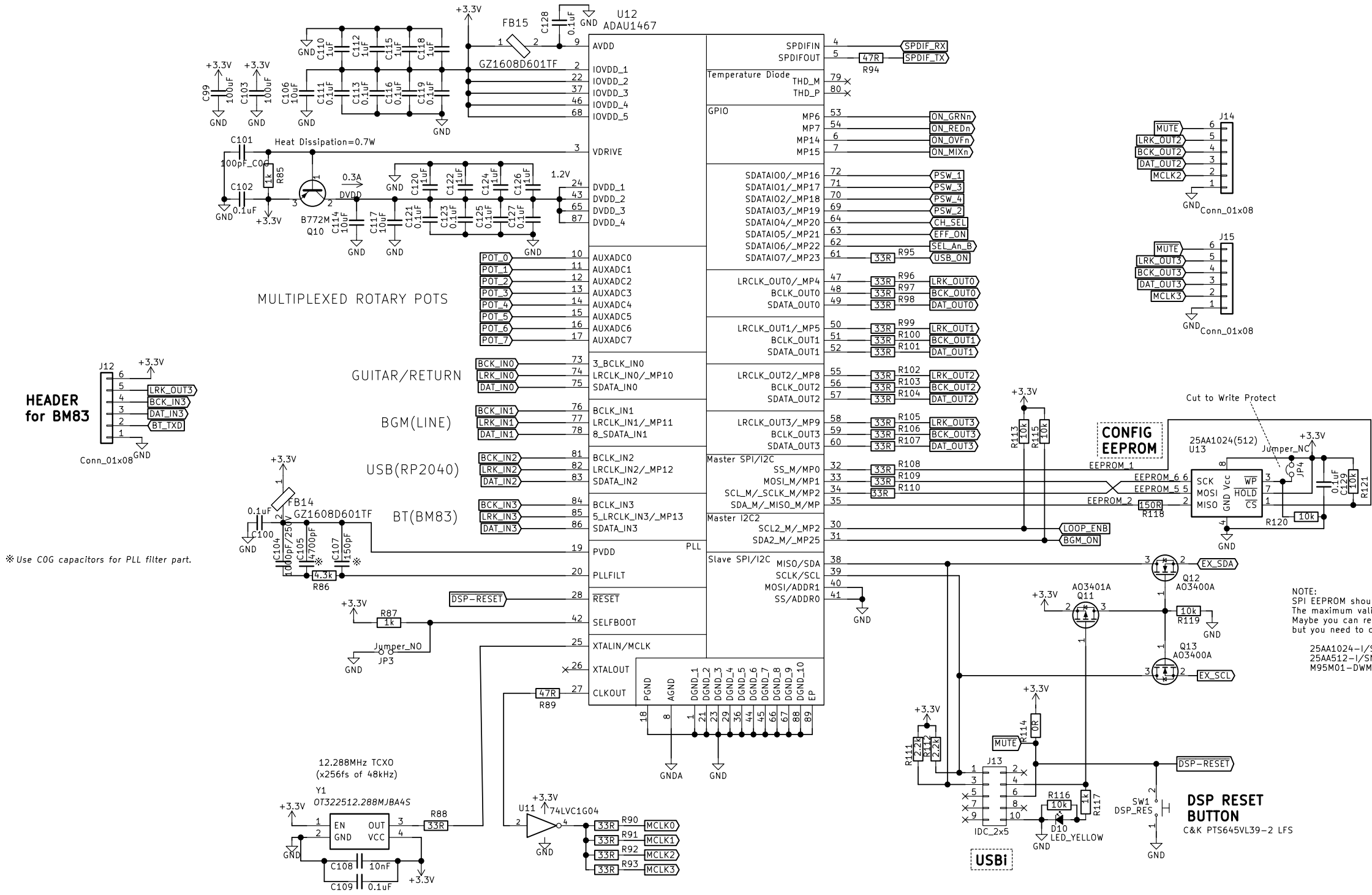
REG12V → ANALOG 5.0V



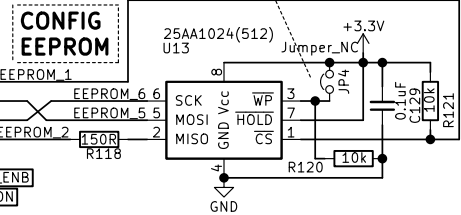
REG12V → ANALOG 3.3V



MAIN BOARD		
CyberPit 2024-2025		
Sheet: /PSU/		
File: PSU.sch		
Title: FreeDSP-G Schematic Circuit Diagram		
Size: A4	Date: 2024-12-20	Rev: 0.1
KiCad E.D.A. kicad (5.1.9-0-10_14)		Id: 3/4



※ Use C0G capacitors for PLL filter part.



NOTE:
SPI EEPROM should be organized by 8 (128kx8, 64kx8, 32kx8, etc..)
The maximum valid memory space is limited up to 512Mbits.
Maybe you can replace U13 EEPROM which contained in the following lists.
but you need to change the configuration EEPROM writing parameters...

25AA1024-1/SM (Microchip, Total=1048576, PageSize=256, N=3)
25AA512-1/SN (Microchip, Total=524288, PageSize=128, N=2)
M95M01-DWMN3TP/K (STM, Total=262144, PageSize=64, N=2)

Default: DSP's I2C slave port is connected to the XIAO RP2040.
If you Connect the USBI then the RP2040 will offline automatically.

MAIN BOARD DSP PART	
CyberPit 2024-2025	
Sheet: /DSP/ File: DSP.sch	
Title: FreeDSP-G Schematic Circuit Diagram	
Size: A3	Date: 2024-12-20
KiCad E.D.A. kicad (5.1.9-0-10_14)	Rev: 0.1
Id: 4/4	