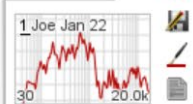




Expand &gt;&gt;



Joe K

Change Cal...



Capture

SPL

134.0

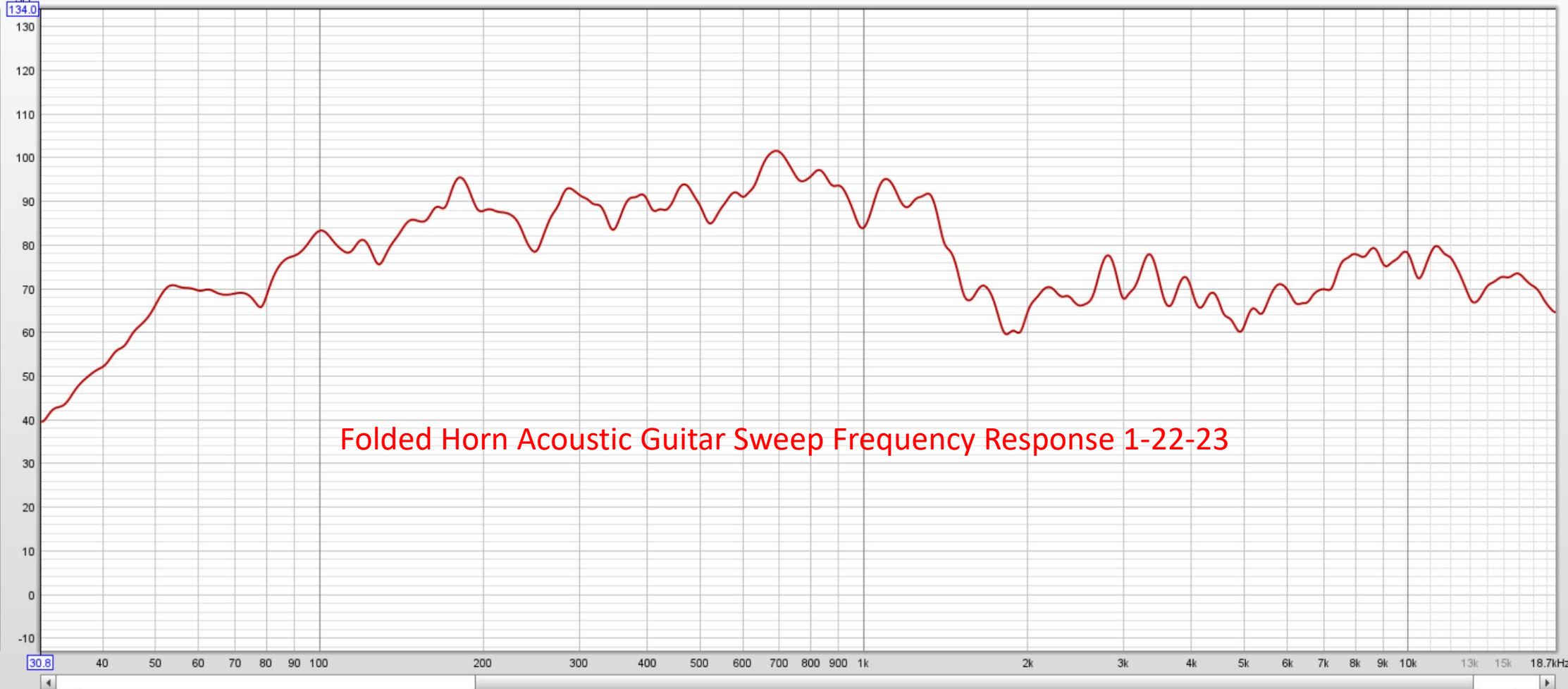
30

20.0k

Joe K

Change Cal...

SPL &amp; Phase All SPL Distortion Impulse Filtered IR GD RT60 RT60 Decay Clarity Decay Waterfall Spectrogram Captured

☒ Joe Jan 22☒ 1/12

dB

☐ Phase

deg

☒ Min phase

deg

☒ Excess phase

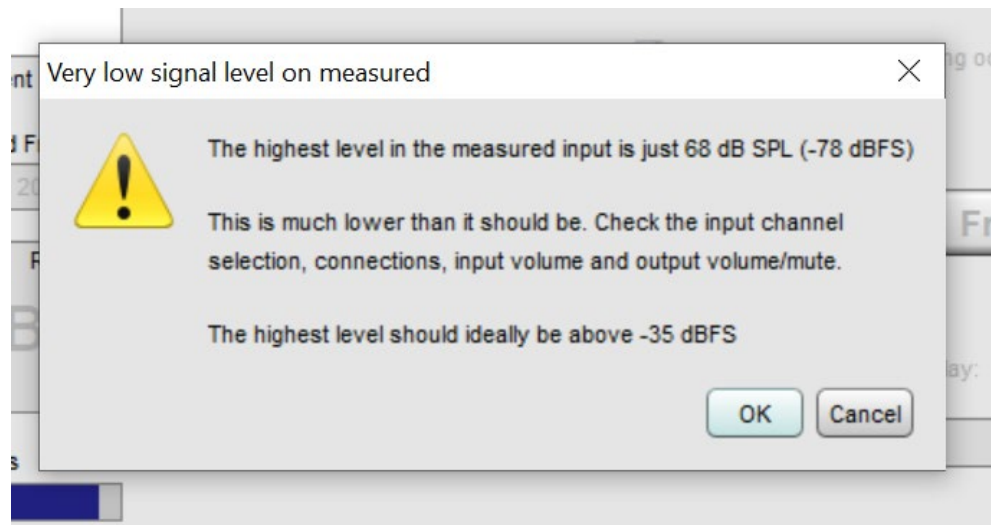
deg

☐ Mic/Meter Cal

1.2 dB

☒ Soundcard Cal

dB



Found the problem, where was this error message on the last two measurements? Behind an open window?