

## AUDIOM SERIES

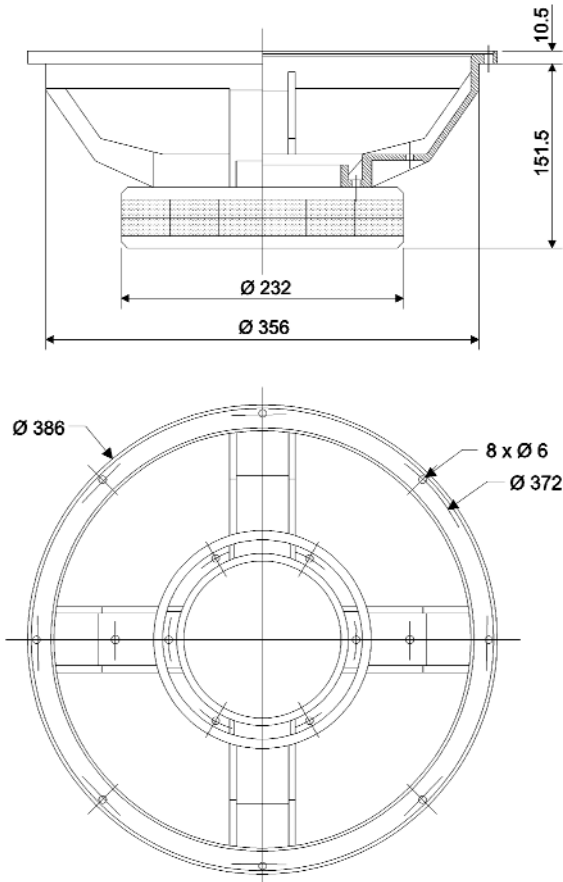
- Thick aluminium sand cast frame
- Straight profile Polyglass cone, foam surround
- Edgewound flat copper wire 77 mm voice coil, black aluminium former
- Efficiency : 93.9 dB
- Where high end fidelity meets pro power

## Audiom 15 VX

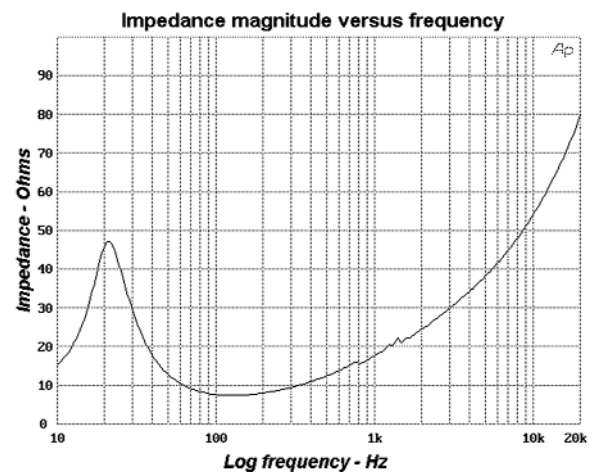
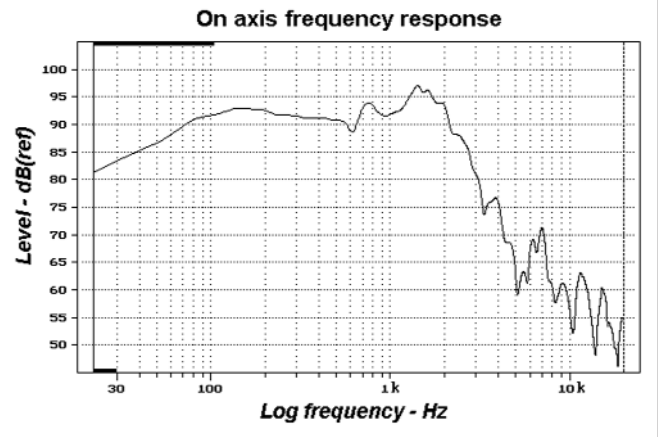
### 15" Polyglass woofer



### DRAWING



### MEASUREMENTS



### SPECIFICATIONS

Nominal power handling	225	W
Program power handling	300	W
Sensitivity	93.9	dB (2.8V/1m)
Cone	Polyglass	
Surround	Foam	
Nominal impedance	8	$\Omega$
DC resistance	6.2	$\Omega$
VC diameter	77	mm
VC height	22	mm
Former	Black Aluminium	
Layers	1	
Wire	Copper	
Inductance	1.75	mH
Xmax	6	mm
Magnet diameter x height	235 multi magnets	mm x mm
Magnet weight	233 x 12	g
Flux density	1.02	T
Gap height	10	mm
Net weight	12.3	kg

### PARAMETERS

Fs	23.7	Hz
Vas	380.5	l
Qts	0.29	
Qes	0.32	
Qms	2.65	
Re	6.1	$\Omega$
Sd	829.6	cm <sup>2</sup>
Cas	271E-8	m <sup>2</sup> /N
Mas	16.6	kg/m <sup>4</sup>
Ras	934.3	$\Omega$ .ac
Cms	394E-6	m/N
Mms	114.3	g
Rms	6 430	g/s
Ces	352.4	$\mu$ F
Les	127.6	mH
Res	50.4	$\Omega$
Bl	18.0	N/A
SPL	93.8	dB/W/m

### SIMULATION

Ql:	7	$\Omega$
Rg:	1.0	
Qts (+Rg):	0.33	

**Low response simulation**

Vb:	160	l
Fb:	29.8	Hz
F-3:	34.3	Hz