

Focal 7C1147 Parameters

Focal 7C1114

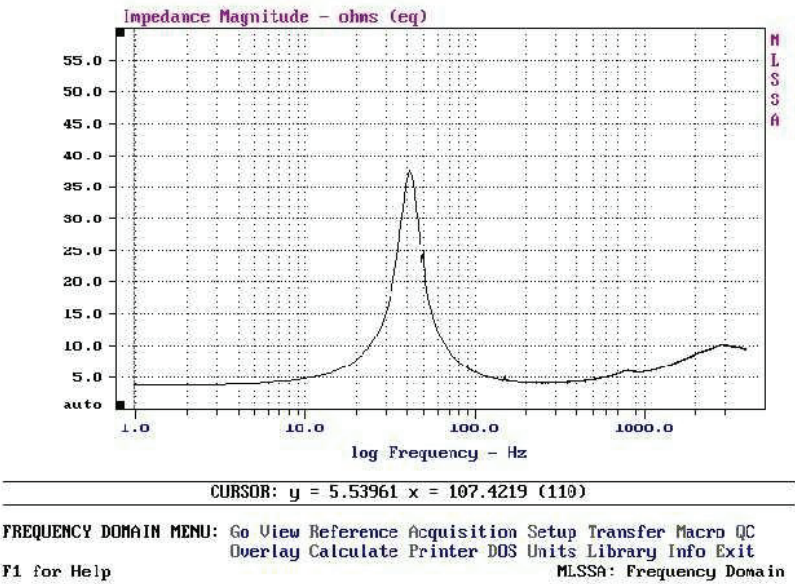
MLSSA SPO 4WI #991006-3852-3865 for Focal

Measured Parameters				QC Limits
Line	Parameter	Value	Units	
1	RMSE-free	0.36	Ohms	
2	Fs	44.10	Hz	
3	Re	2.90	Ohms	
4	Res	32.20	Ohms	
5	Qns	4.69		
6	Qes	0.42		
7	Qts	0.39		
8	L1	0.29	mH	
9	L2	0.43	mH	
10	R2	3.85	Ohms	
11	RMSE-load	0.61	Ohms	
12	Vas(Sd)	30.25	liters	
13	Mms	15.17	grams	
14	Cms	859	µM/Newton	
15	B1	5.37	Tesla-m	
16	SPLref(Sd)	89.7	dB(Ref)	
17	Rub-index	0.05		

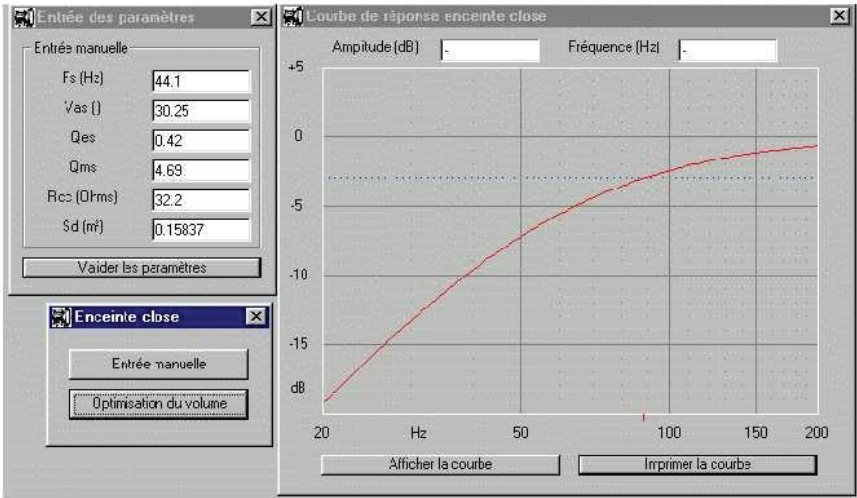
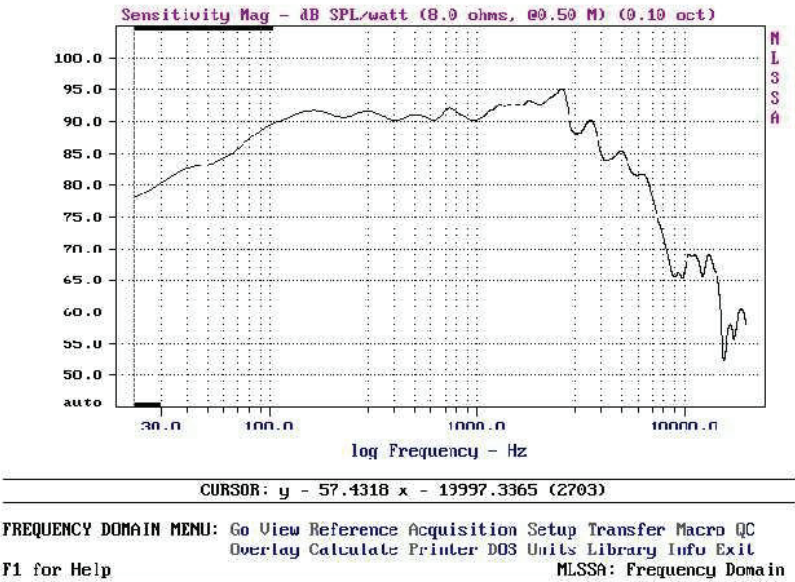
Method: Mass-loaded (20.000 grams) Area (Sd): 158.37 sq cm

DCR mode: Fixed (3.05 - 0.15 ohms) QC file: CLOSED

Analysis successful. Shift in Fs = -35.3% (-20% to -50% is recommended).
LIB PARAMETERS: Go Calc Method DCR-mode Area Synth QC Export Z-ref Print dUmp
F1 for Help or ESC to exit MLSSA: Parameters



Focal 7C1147 Parameters



Focal 7C1147 Parameters

