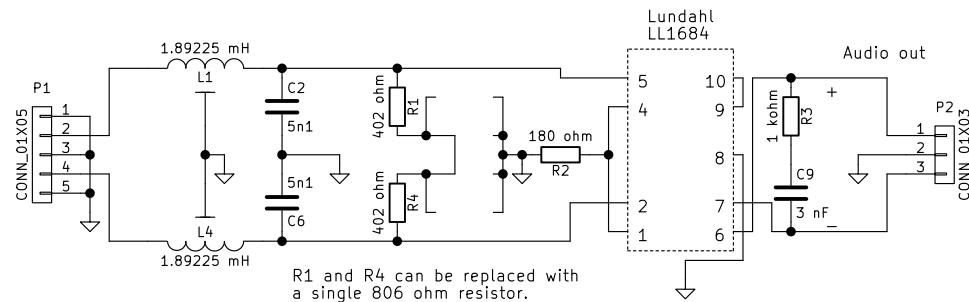


Filter capacitors: $\pm 1\%$, 160 V, polystyrene

C28, C29, C50, C51 on main board $\rightarrow 15\text{ nF } \pm 1\%$, 160 V, polystyrene

Filter inductors:

87 turns of 0.6 mm "enamelled" copper wire on a 250 nH/turn^2 , N48, P26x16 potcore type Siemens/Epcos/TDK B65671-T250-G48 with no adjusting screw, base plate with clip B65675-B5X0 and coil former type B65672-B-T1



The extra pin on the inductor symbol represents its grounded clip.