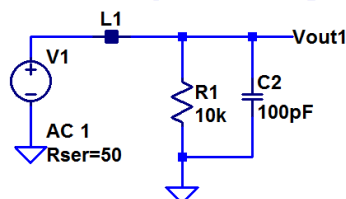


Are Ferrites bad for sound?

These tests use a Wurth 742 792 11 ferrite

For both filters shown, attenuation above 1GHz > 48 dB

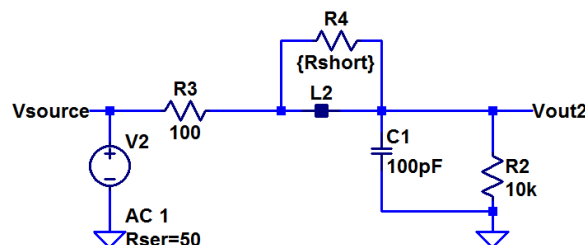
The Audibility Challenge



```
.ac dec 100 100 10e9
.step param Rshort 1 1e12 1e12
```

1. Will L1 in this filter affect the sound of the amplifier negatively?
2. On an AP or Sound Card Test, what will be the added distortion of L1 below 100 kHz?

A Practical RFI Filter for Audio



Parasitic L and C on resistors makes them less effective at HF than ferrite beads or SMD's. All R's in these models are assumed to be ideal.