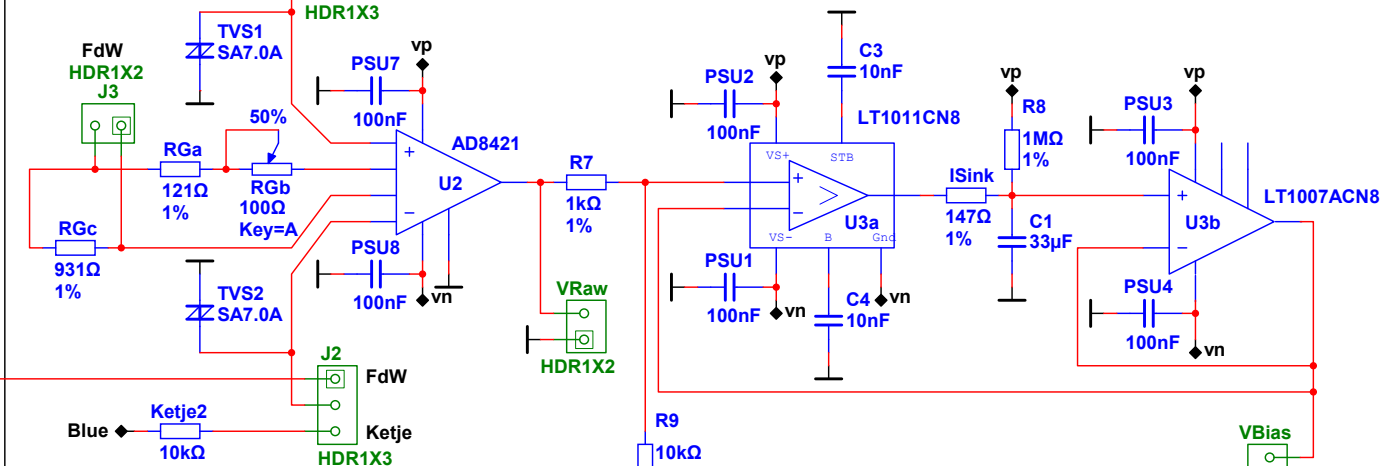
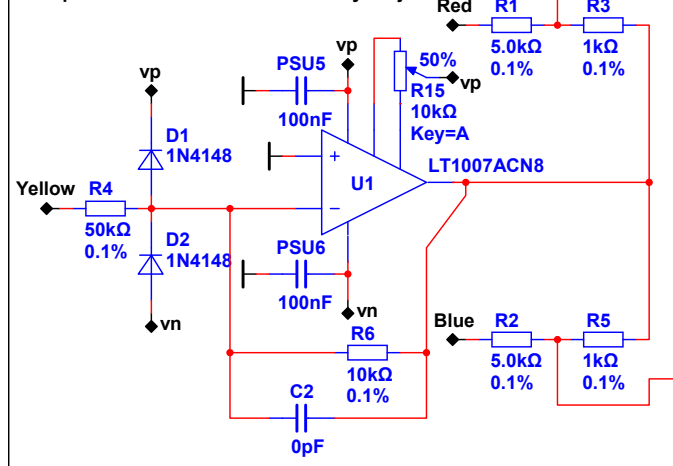
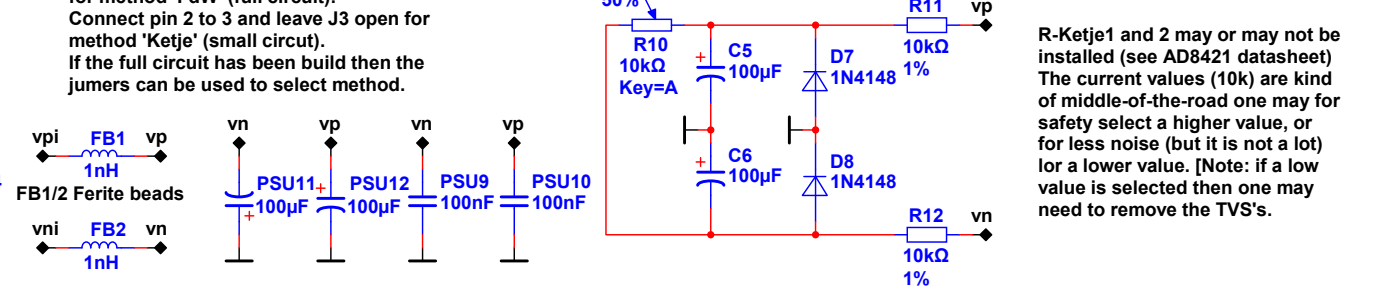
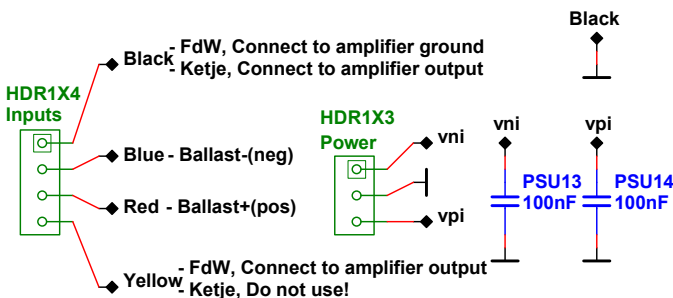


Components in box not needed if only Ketje



J1/2/3 Connect pin 1 to 2 on all 3 headers for method 'FdW' (full circuit). Connect pin 2 to 3 and leave J3 open for method 'Ketje' (small circuit). If the full circuit has been build then the jumers can be used to select method.



See <http://www.diyaudio.com/forums/solid-state/308443-measure-dc-bias-operating-class-ab-amplifier-19.html#post5101233> post #190 for 'method-Ketje' :)

The method 'Ketje' does not subtract the audio signal form the measurement signal, and it does not produce a ground referenced (relative to the amplifier) measurement result. In addition.

The method 'Ketje' does not need any 0.1% (expensive) resistors, uses one opamp less and may be a tiny bit faster.

100 Trimmer PV37W101C01B00  
10k Trimmer PV37W103C01B00

Title: FdWs Real Time DC Bias Meter; AD8421; V1		
Size: A3	Document N: 0001	Revision: 1.0
Date: 2017-06-12	Sheet 1 of 1	