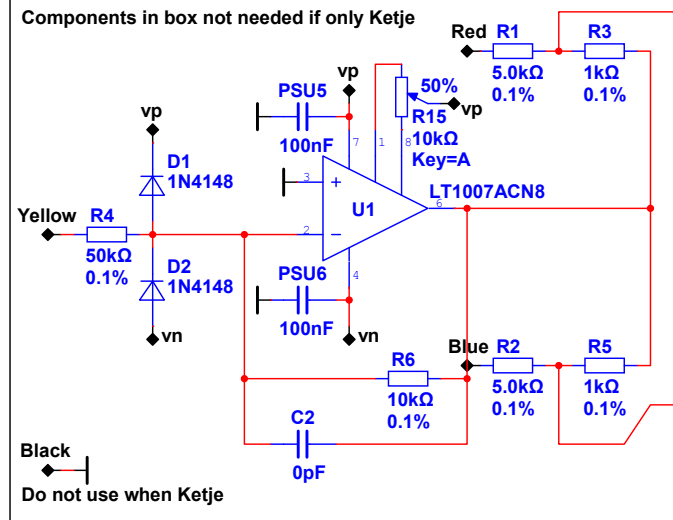
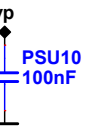
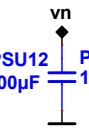
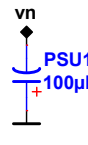
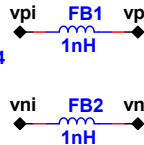
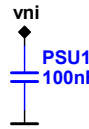
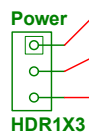
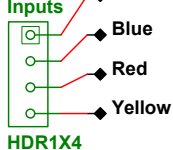


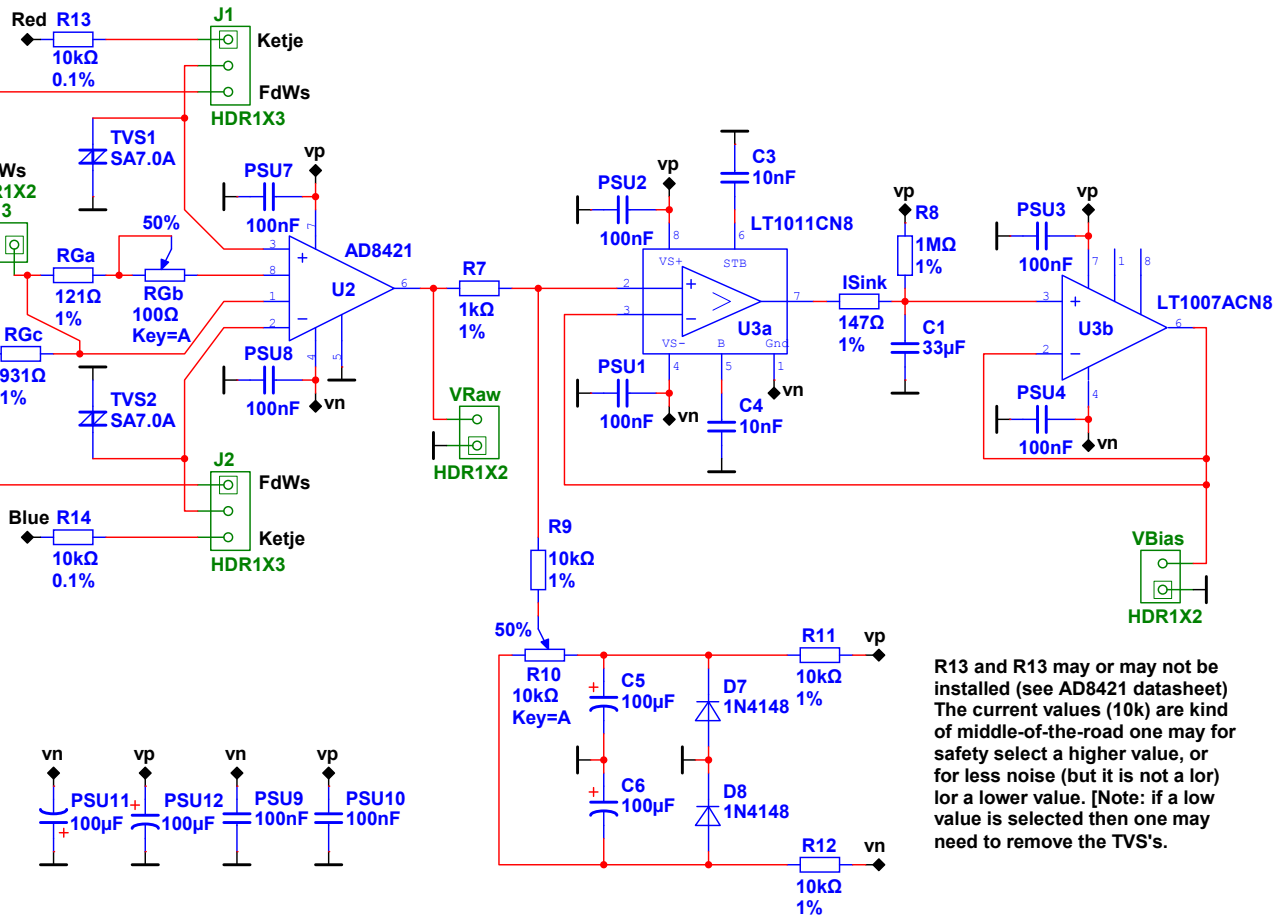
Components in box not needed if only Ketje



Inputs Black - Do not use when Ketje



See <http://www.diyaudio.com/forums/solid-state/308443-measure-dc-bias-operating-class-ab-amplifier-19.html#post5101233> post #190 for 'method-Ketje' :)



R13 and R13 may or may not be installed (see AD8421 datasheet) The current values (10k) are kind of middle-of-the-road one may for safety select a higher value, or for less noise (but it is not a lor) lor a lower value. [Note: if a low value is selected then one may need to remove the TVS's.

Title: FdWs Real Time DC Bias Meter; AD8421; V1

Size: A3 Document N: 0001 Revision: 1.0

Date: 2017-06-09

Sheet 1 of 1