

F3 Clone Boards Group Buy Preliminary Information

Boards for an F3 group buy are currently under development. Images of the boards in their current state of design showing their features and layout are in this document.

Some key features include:

- diyAudio UMS mounting pattern compatibility
- 2oz Copper with ENIG pad finish
- Flexible layout offer options for diy customization and tweaking

Preliminary Pricing*

Main Amp Board Set (1x left and 1x right) \$12

Coupling Cap Board Set 2x \$6

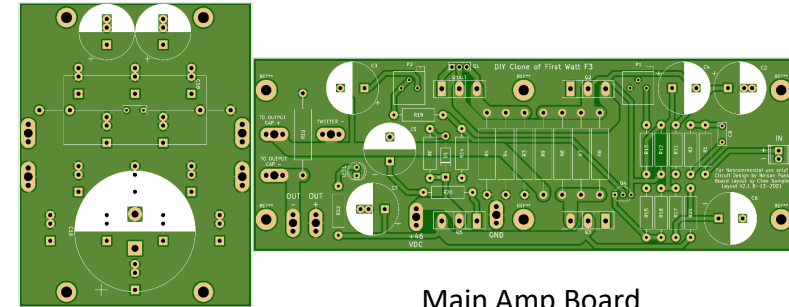
Power Supply Board 1x \$7

optional boards

Bridge Rectifier Boards 2x \$4

Front Panel LED Mounts 2x \$1

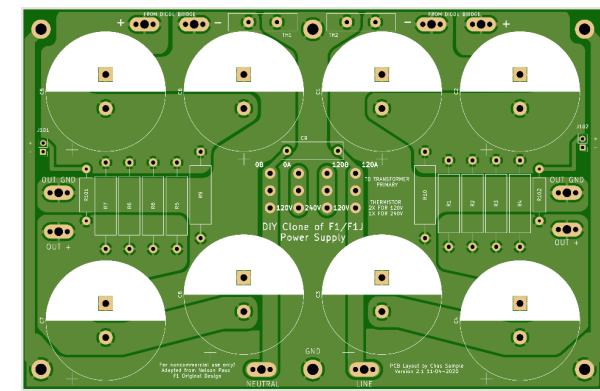
*Prices reflect approximately 20 sets of boards priced on 6/14/2021 final prices depend on the actual size of the group buy and rates when the order is placed, but this is pretty close.



Coupling Cap
Board

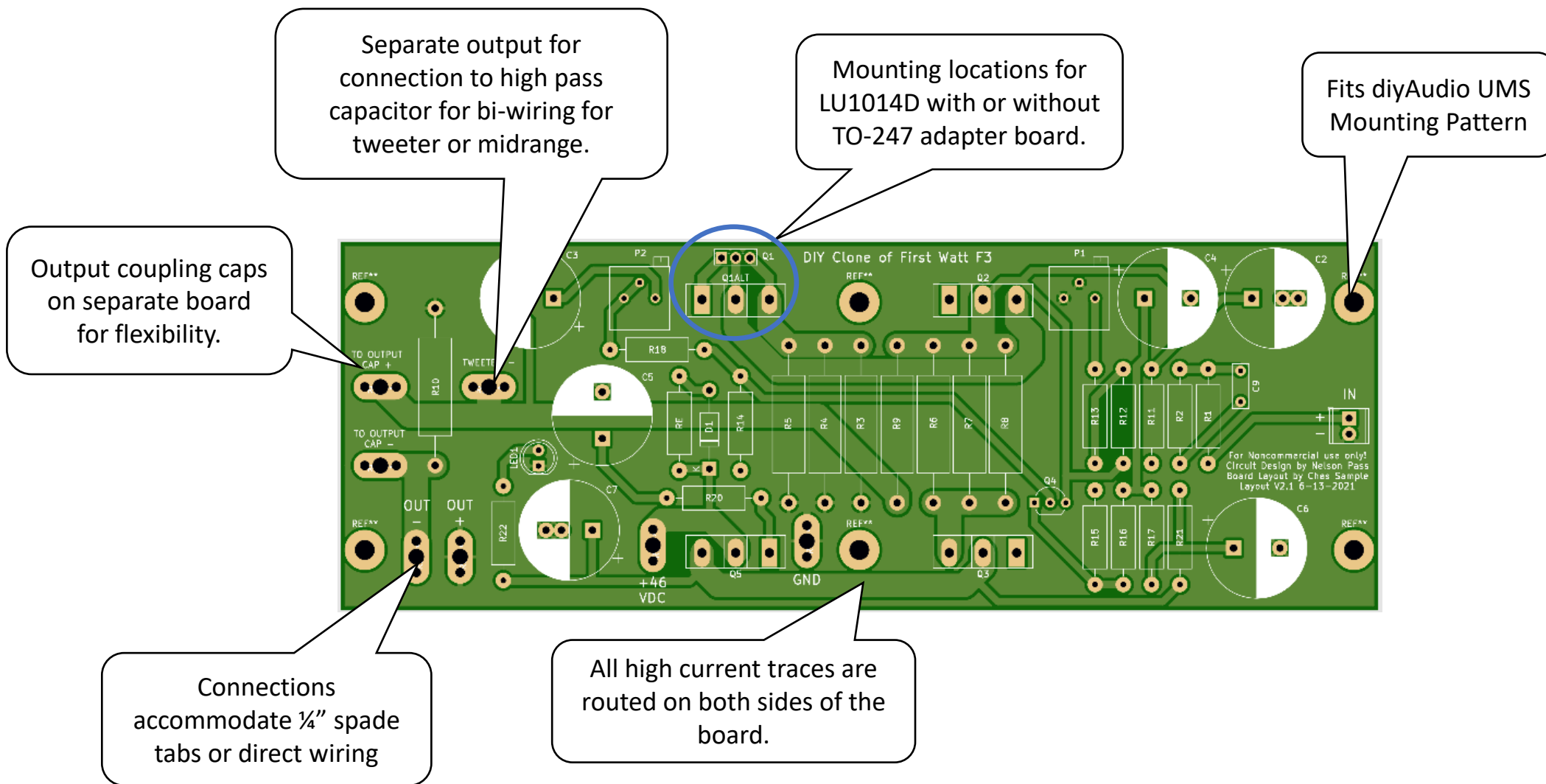
Main Amp Board

(relative board locations
shown as mounted on UMS
hole pattern)



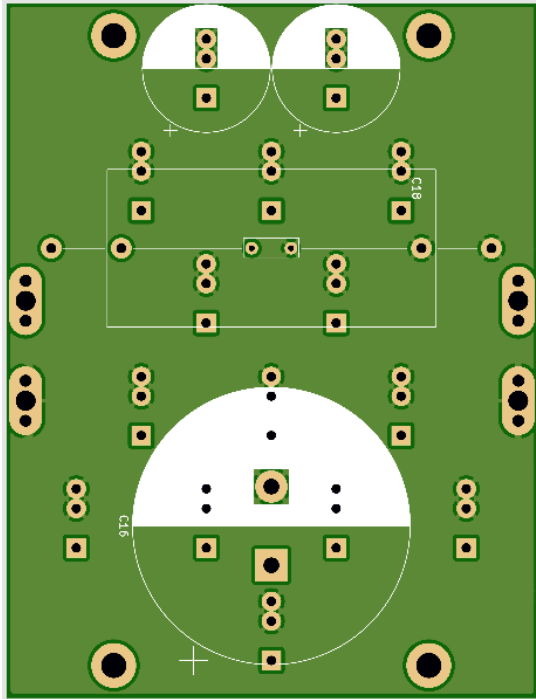
Power Supply
Board

Main Amp Board (Left Hand Shown)




Output Coupling Cap Board


Quotes from the [F3 Builders Thread](#)...



Stock F3 capacitor configuration on front of board.

23rd January 2009, 02:05 PM

Nelson Pass 
The one and only





Join Date: Mar 2001

All those parts sound pretty good to me. Probably the most contentious part is the big electrolytic at the output. If you could parallel up a pile of Elna silks or polypropylenes to form the output capacitance I think that would be the biggest improvement you could make parts-wise.

Yes, I can see it now.... 100 parallel Solen canisters per channel...

24th January 2009, 12:11 AM

Nelson Pass 
The one and only



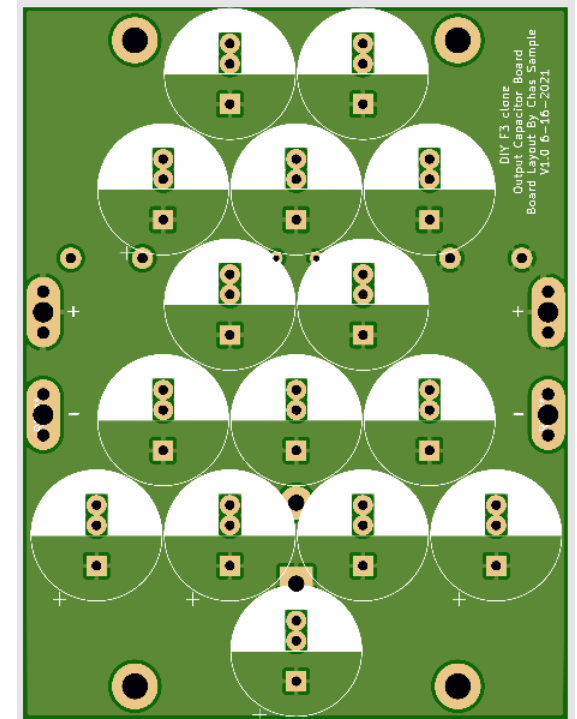
Join Date: Mar 2001

Quote:

Originally posted by thanh1973
I forgot about Elna Silmic caps. I just had a look at these 15 of these suckers. Maybe Panasonic FC would be a mor

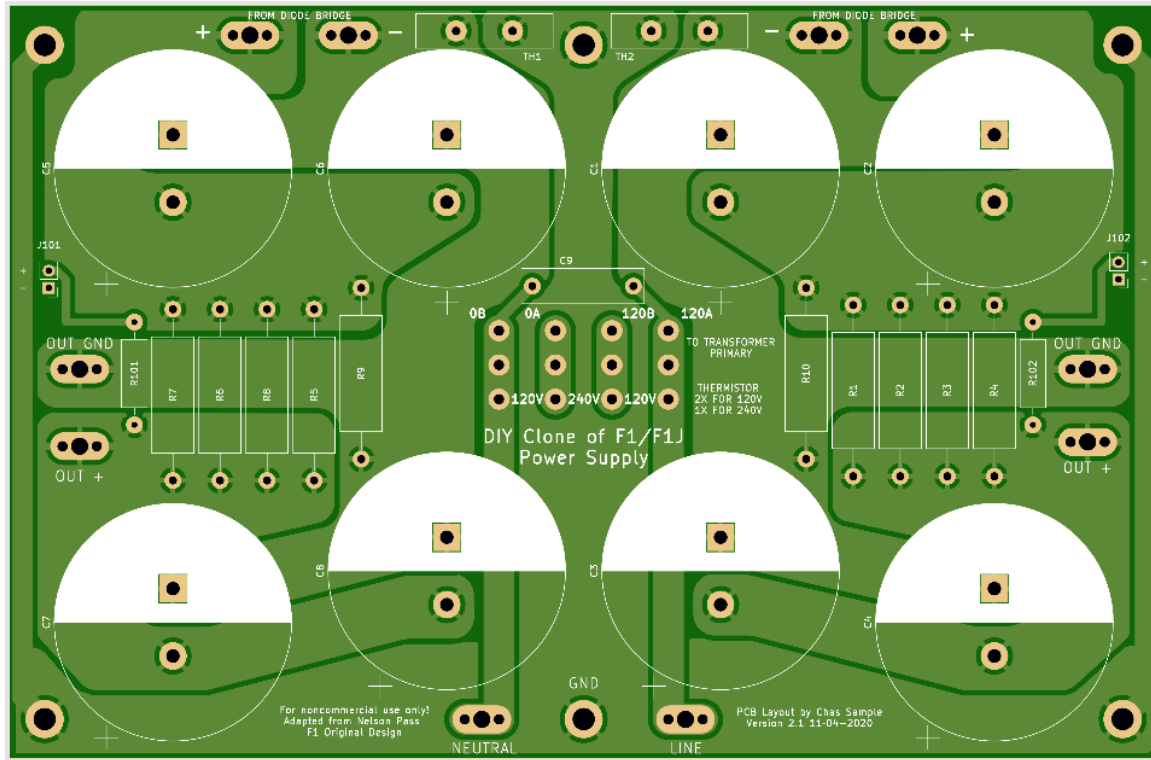
Trust me - people obviously are missing a big bet on the Elnas.

Please note these comments are 12 years old, and things can change - Nichicon Muse audio grade caps may be another good choice in place of the Elnas.



15x Elna Silmic II or Nichicon Muse on Back of Board

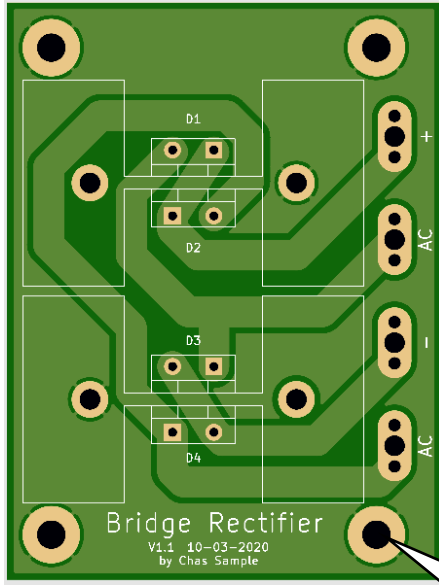
Power Supply Board



Power supply is a double mono single rail supply from a previous [F1 group buy](#). All traces are double sided and the mounting hole pattern matches hole spacing on the diyAudio chassis base plates for easy assembly.

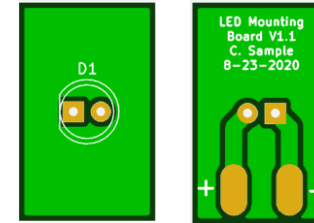


Accessory Boards



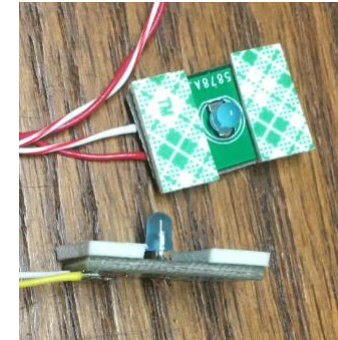
Discrete component bridge rectifier board allows the use of fast switching and soft recovery diode types.

Hole pattern matches diyAudio store chassis base plate for easy mounting.



LED Mounting Board provides and easy way to mount power indicator LED's to the front panel securely without glue or fasteners.

Note: LED boards are 1oz copper with Lead Free HASL finish



Tentative Project Schedule

(Subject to Real Life Priorities, shipping delays, parts shortages, kid's birthdays Please be patient ☺)

June 19 – July 4	Complete Board Design and Checking
July 4	Order Test Boards and Components for Test Build
July 18	Test Boards Arrive
August 1	Test Build Complete
August 1-8	Final Updates to Boards
August 8	Order Group Buy Boards
August 31	Ship Group Buy Boards



[Link to Group
Buy Sign Up
Sheet](#)