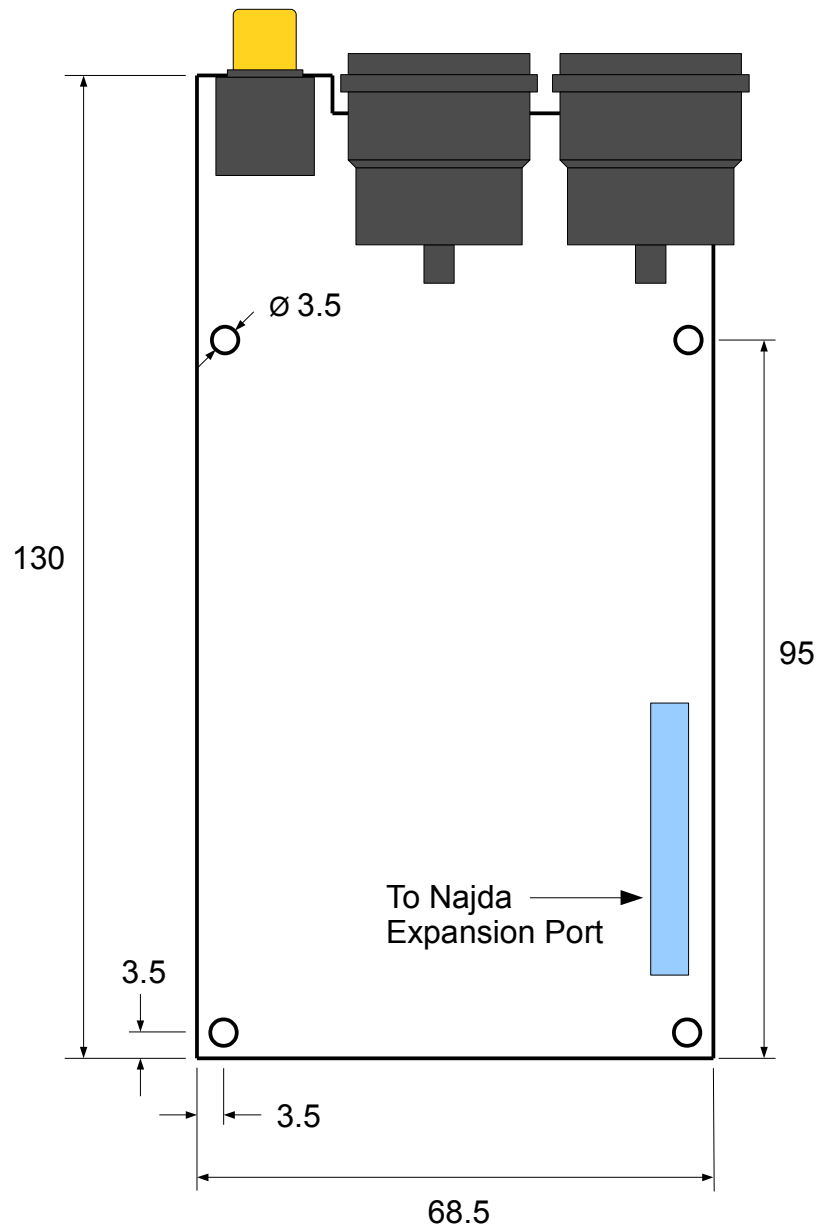
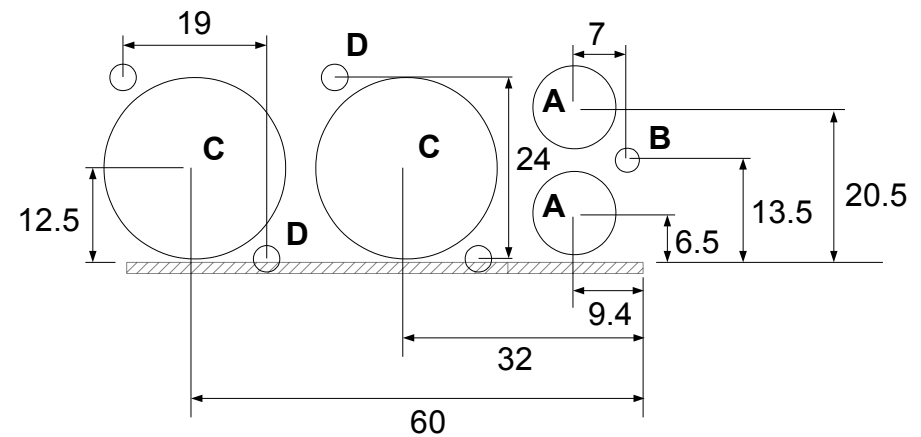


Expansion board size and mounting holes



Suggested rear panel layout (as seen from behind the case)



- A:** Circular cut for RCA jacks ($\varnothing 11$ mm)
- B:** Circular cut for RCA mounting screw ($\varnothing 3.2$ mm)
- C:** Circular cut for XLR jacks ($\varnothing 24$ mm)
- D:** Circular cut for XLR mounting screws ($\varnothing 3.5$ mm)