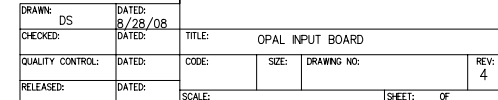


INPUT BOARD



6

5

4

3

2

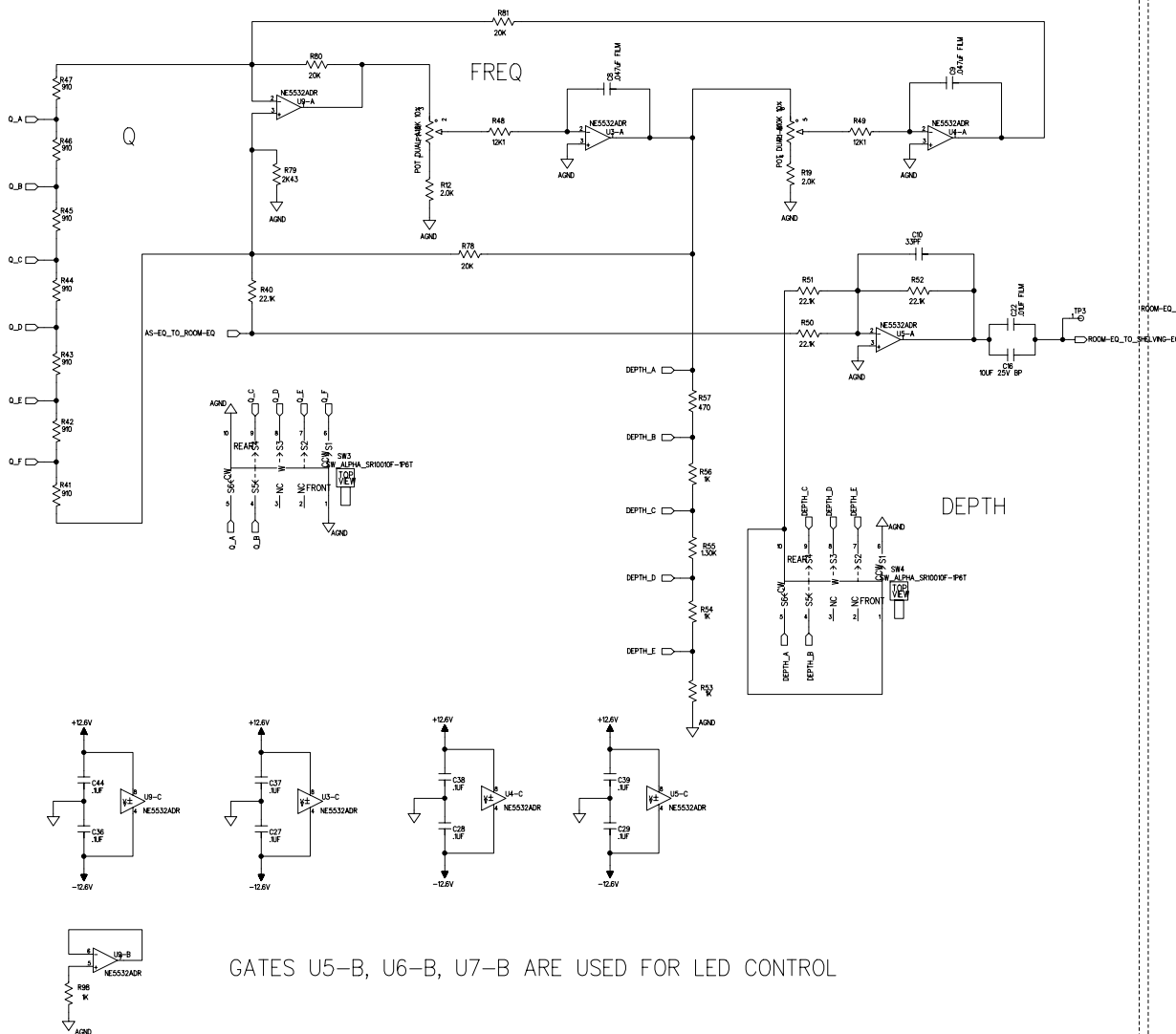
1

CONTOUR BOARD

REVISION RECORD		
LTR	ECO NO.	APPROVED: DATE:

ROOM EQ

7



6

5

4

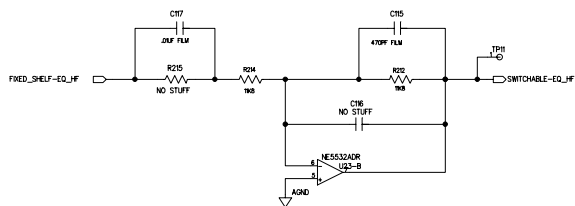
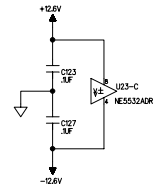
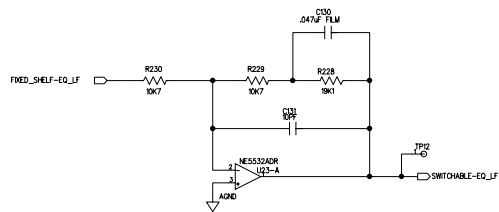
3

2

1

FIXED SHELVING EQ

REVISION RECORD			
LTR	ECO NO.	APPROVED	DATE

HIGH
13LOW
12

COMPANY:

EVENT

DRAWN: DS	DATED: 10/22/09	TITLE: OPAL CONTOUR BOARD			
CHECKED:	DATED:	CODE:	SIZE:	DRAWING NO:	REV: 5-7
QUALITY CONTROL:	DATED:	SCALE:			SHEET: OF
RELEASED:	DATED:				

6

5

4

3

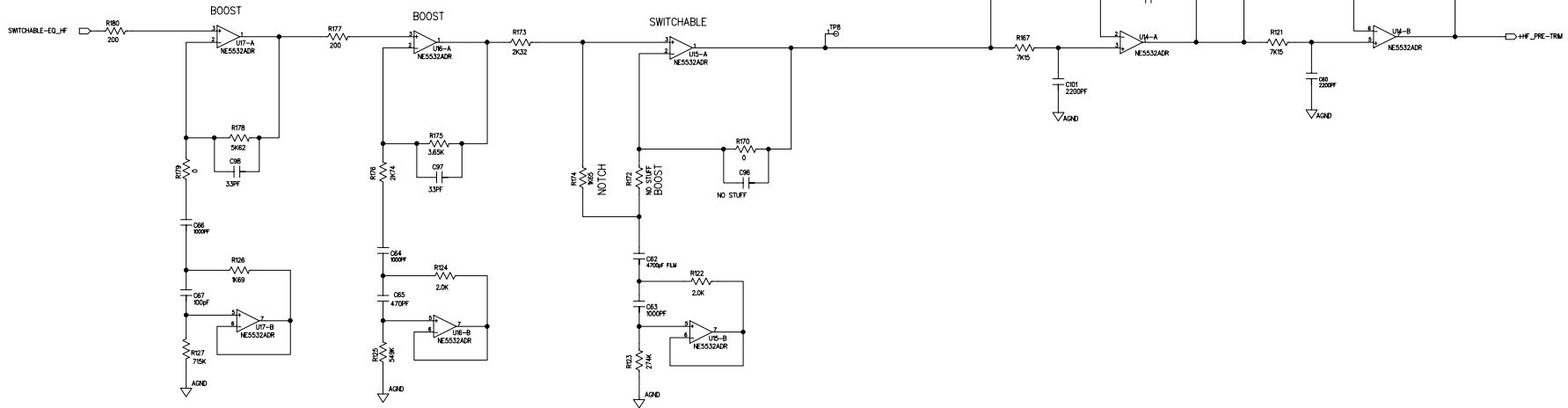
2

1

REVISION RECORD		
LTR	ECO NO.	APPROVED: DATE:

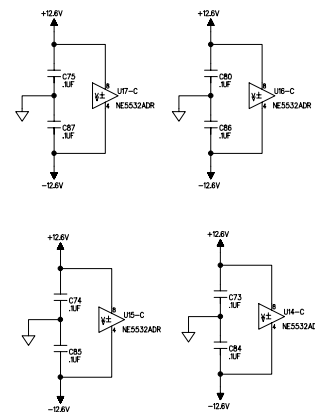
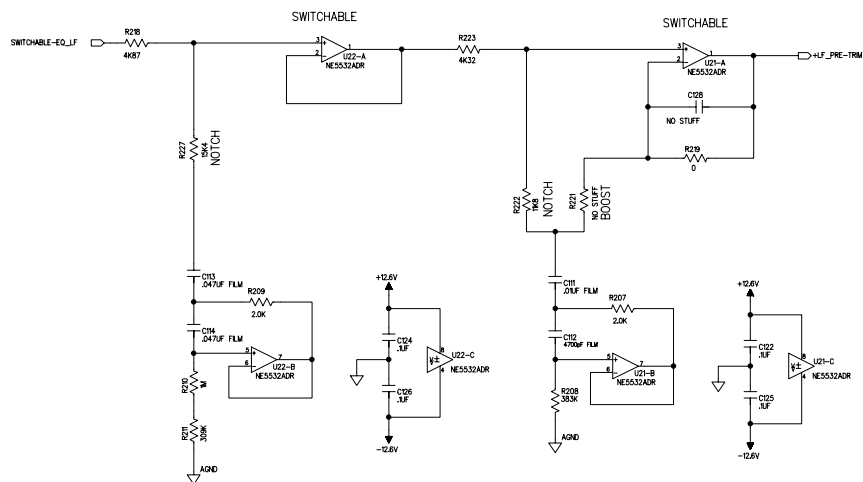
HIGH FREQUENCY

15

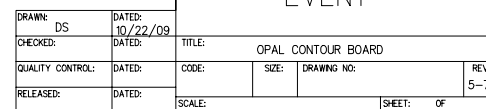


LOW FREQUENCY

14



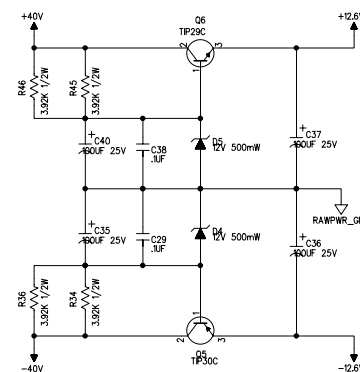
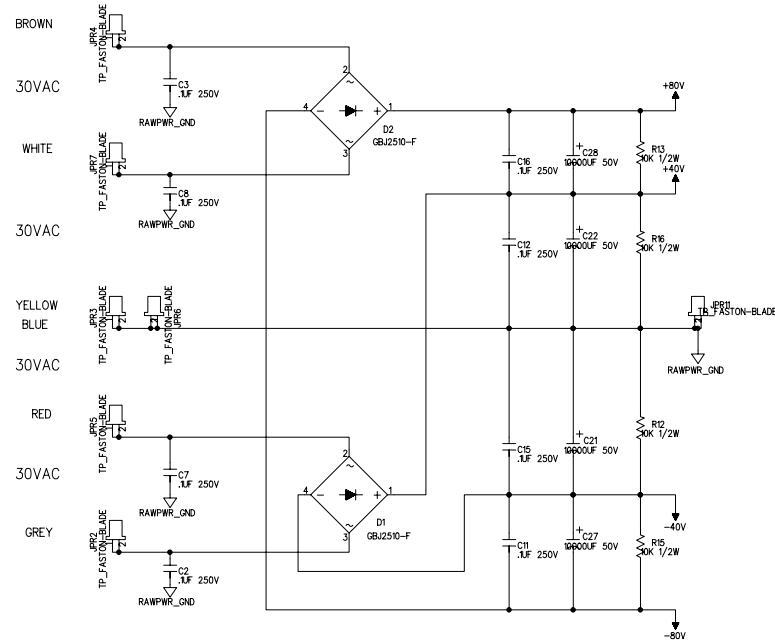
COMPANY:		
EVENT		
DRAWN: DS	DATED: 10/22/09	TITLE: OPAL CONTOUR BOARD
CHECKED:	DATED:	CODE: SIZE: DRAWING NO: REV: 5-7
QUALITY CONTROL:	DATED:	SCALE: SHEET: OF
RELEASED:	DATED:	



REVISION RECORD			
LTR	ECO NO.	APPROVED	DATE

POWER SUPPLY

ANBAL PROTO XFMR WIRING:



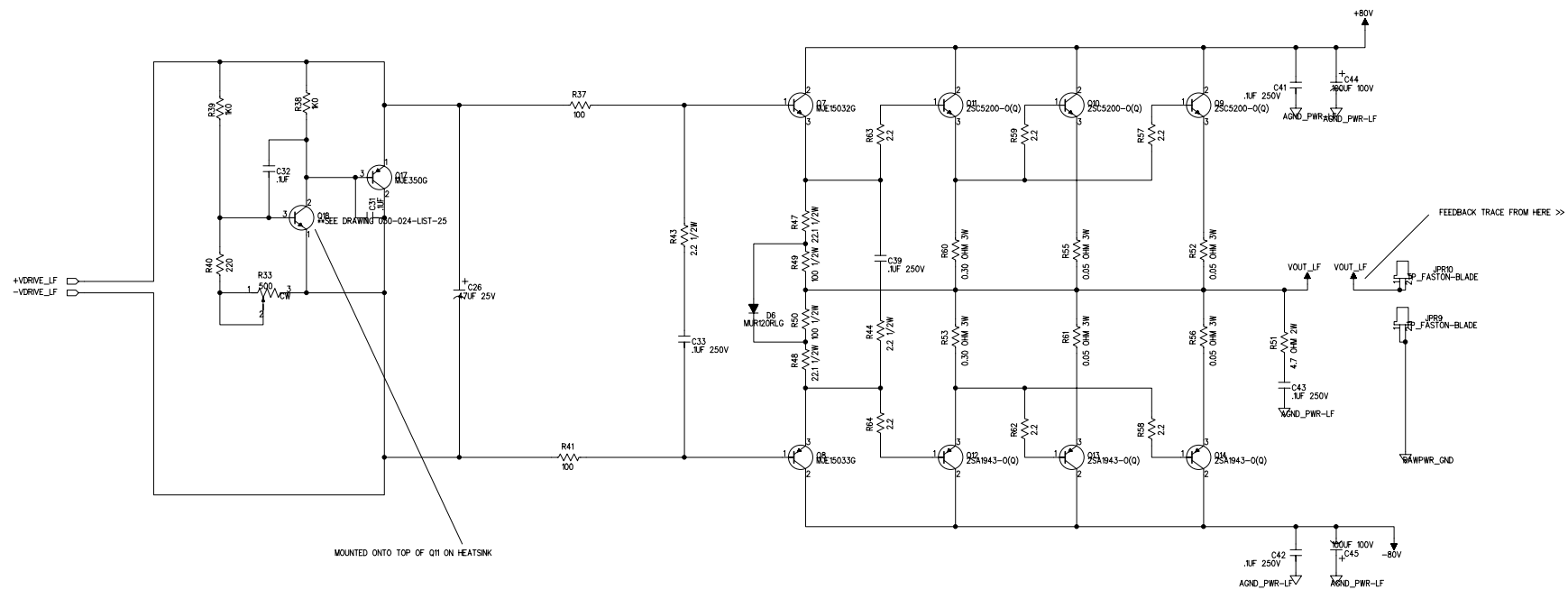
POWER FOR DAUGHTER & EQ BOARDS

DRAWN: DS		DATED: 8/11/08		TITLE: OPAL MAIN BOARD	
CHECKED:		DATED:		CODE:	
QUALITY CONTROL:		DATED:		SIZE: DRAWING NO:	
RELEASED:		DATED:		SCALE:	
				SHEET: OF	

COMPANY: EVENT

REV: 7

OUTPUT STAGE LOW FREQ AMPLIFIER



REVISION RECORD			
LTR	ECO NO.	APPROVED: DATE:	

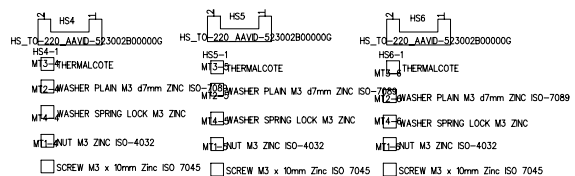
DRAWN: DS			
CHECKED: DATED: 9/11/08			
QUALITY CONTROL: DATED:			
RELEASED: DATED:			
SCALE: SHEET: OF			
REV: 7			

COMPANY: EVENT			
TITLE: OPAL MAIN BOARD			
CODE: SIZE: DRAWING NO:			
SHEET: OF			

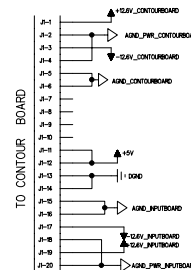
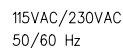
DRAWN:	DS	DATED:	9/11/08		
CHECKED:		DATED:			
QUALITY CONTROL:		DATED:			
RELEASED:		DATED:			
		TITLE:	OPAL MAIN BOARD		
		CODE:	SIZE:	DRAWING NO:	REV 7
		SCALE:		SHEET:	OF

	A
--	---

COMPANY:			
EVENT			
TITLE: OPAL MAIN BOARD			
CODE:	SIZE:	DRAWING NO:	REV 7
SCALE:		SHEET:	OF

☐ THERMATECOTE

REVISION RECORD			
LTR	ECO NO:	APPROVED:	DATE:



COMPANY:			
EVENT ELECTRONICS			
TITLE: OPAL POWER SUPPLY BOARD			
CODE:	SIZE:	DRAWING NO:	REV: 4
SCALE:		SHEET: OF	