

amplifier

File: `amplifier.kicad_sch`

powersupply

File: powersupply.kicad_sch

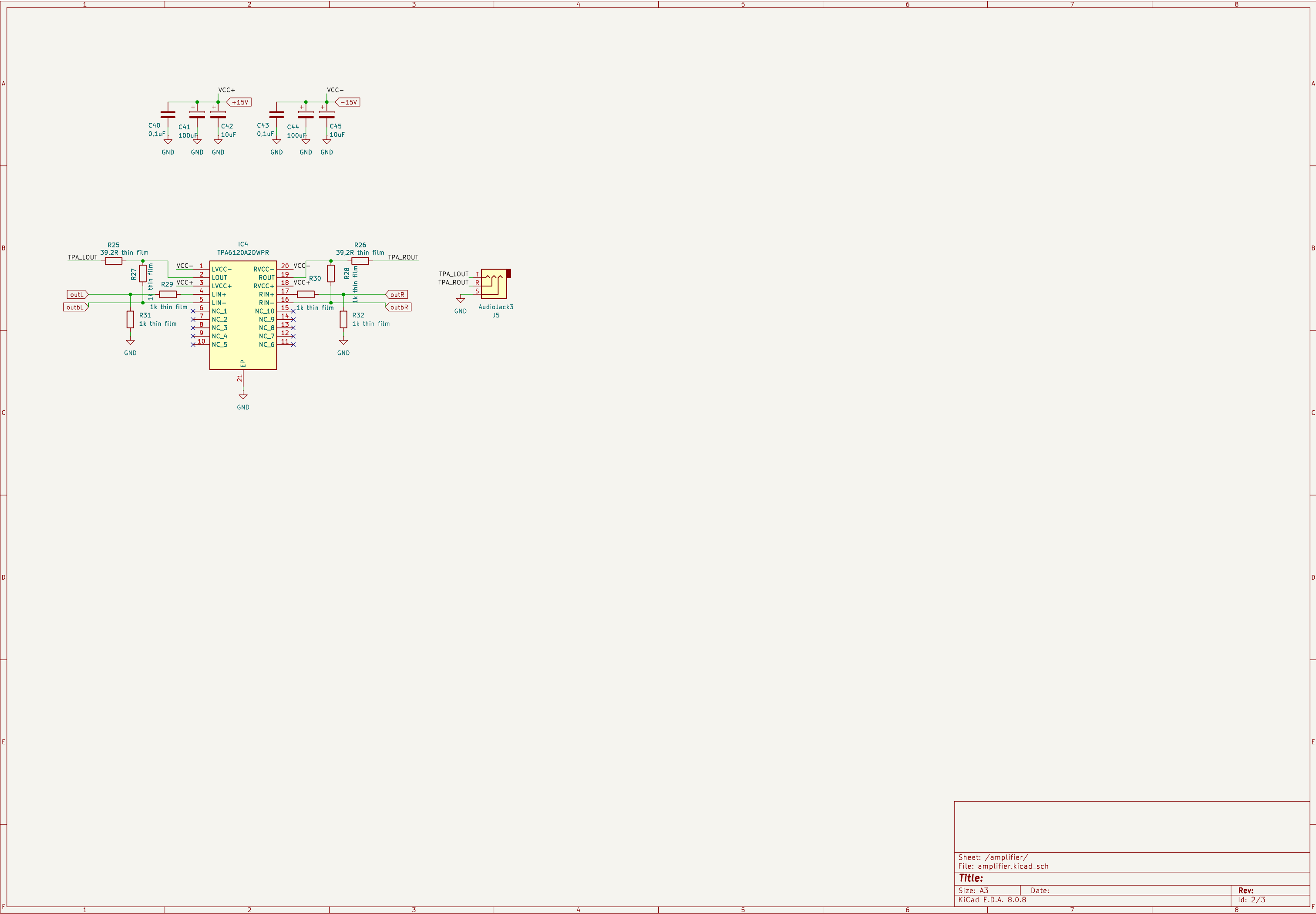
Sheet: /
File: ES9039Q2M_DAC_V1.kicad_sch

Title:

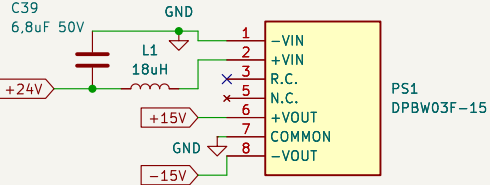
Size: A3

Date:

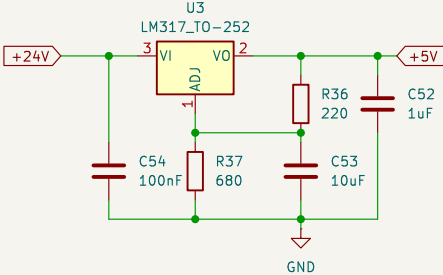
Rev:
Id: 1/3



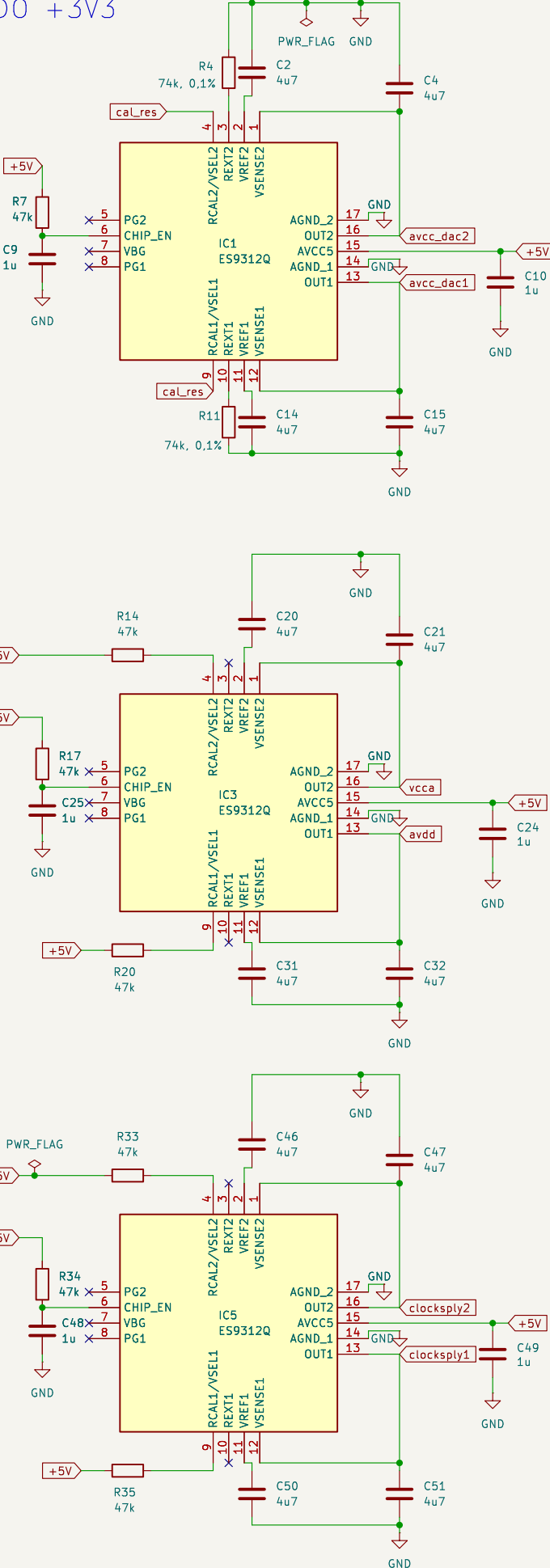
SMPS $\pm 15V$



Linear +5V



LDO +3V3



Sheet: /powersupply/
File: powersupply.kicad_sch

Title:

Size: A3

Date:

Rev:

KiCad E.D.A. 8.0.8