

OCT 3, 2016

REVISION: 1.3

# ES9038PRO - 8 CHANNEL 64 PIN LQFP

## HISTORY

3-9-16 INITIAL DRAFT  
9-16-16 OPAMP CIRCUIT CHANGE  
10-3-16 ADD 47 OHM BTW OP and SE OUTPUT.

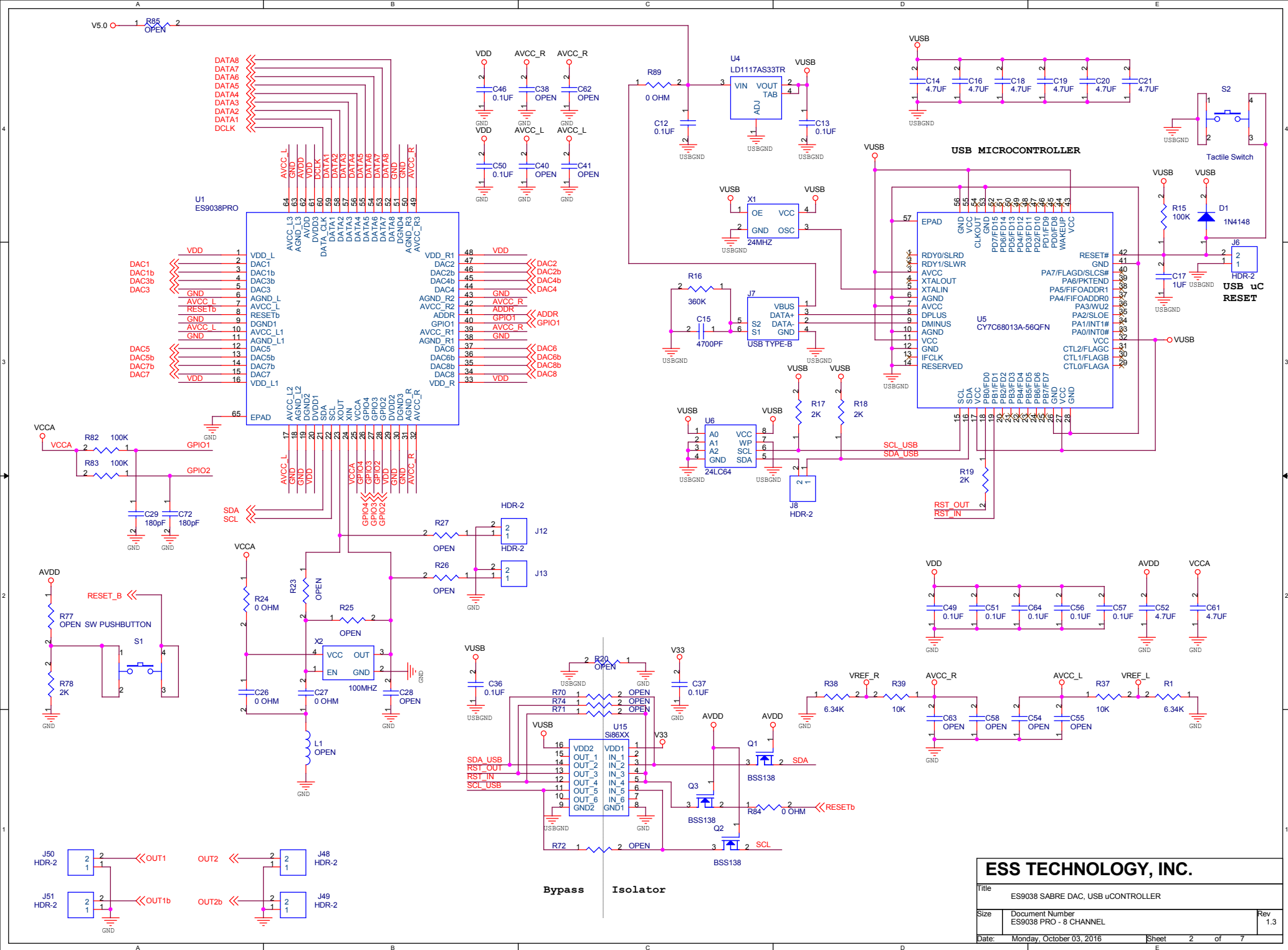
## PAGE

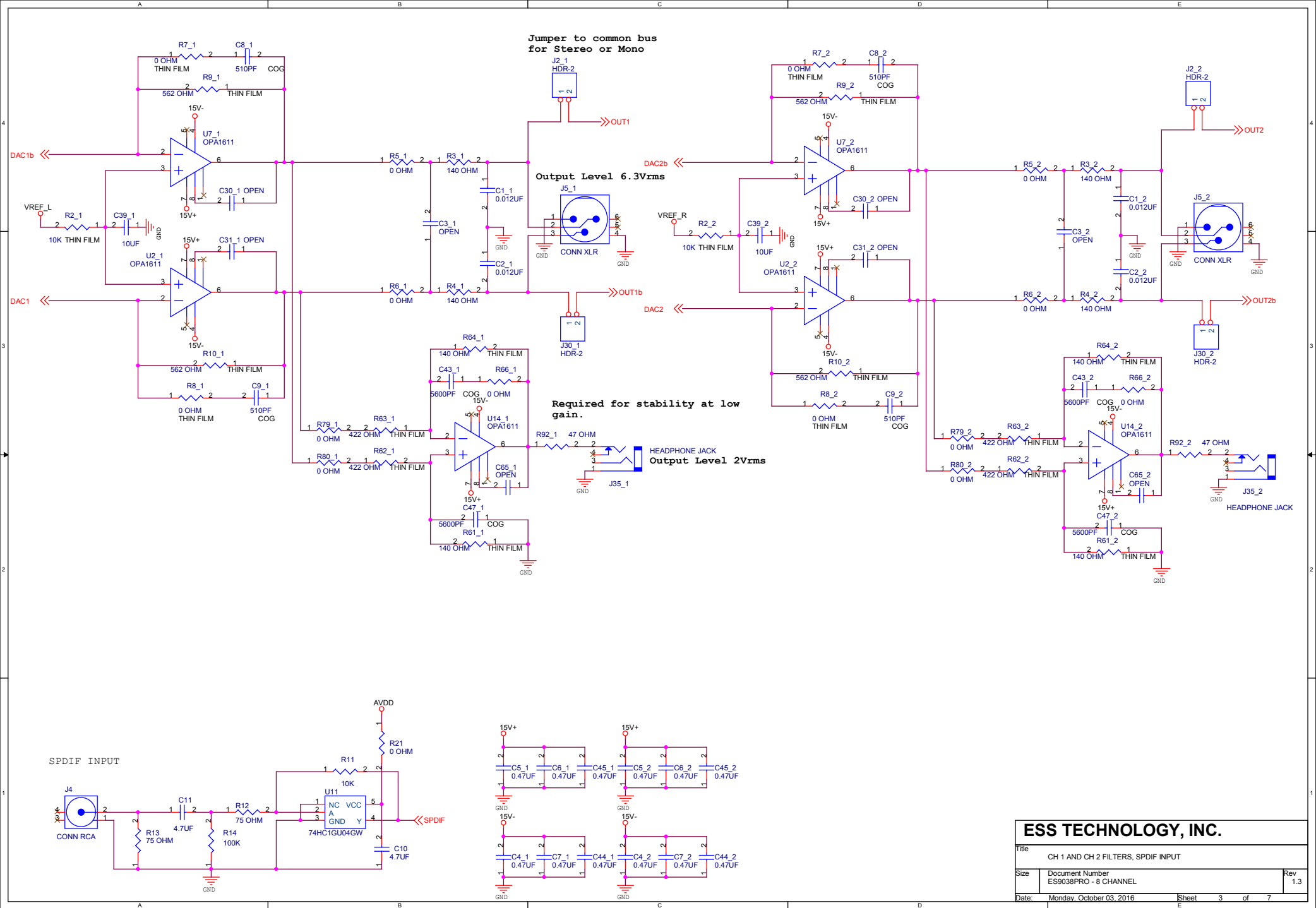
- 1 INDEX
- 2 SABRE DAC, USB uCONTROLLER, EEPROM
- 3 CH1 AND CH2 FILTERS, SPDIF
- 4 CH3 AND CH4 FILTERS
- 5 CH5 AND CH6 FILTERS
- 6 CH7 AND CH8 FILTERS
- 7 CONNECTORS, REGULATORS

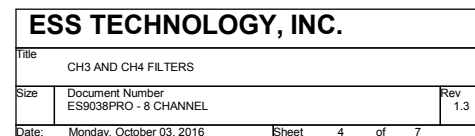
THE INFORMATION HAS BEEN CHECKED AND IS BELIEVED TO BE RELIABLE. HOWEVER, NO RESPONSIBILITY IS ASSUMED FOR INNACCURACIES. CIRCUIT DIAGRAMS ARE PROVIDED AS A MEANS OF ILLUSTRATING TYPICAL APPLICATIONS; CONSEQUENTLY COMPLETE INFORMATION FOR CONSTRUCTION PURPOSES IS NOT NECESSARILY GIVEN. ESS RESERVES THE RIGHT TO MAKE CHANGES AT ANY TIME IN ORDER TO IMPROVE THE DESIGN.

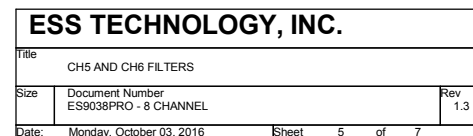
## ESS TECHNOLOGY, INC.

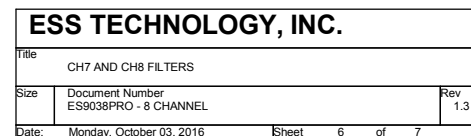
Title			TITLE PAGE		
Size	Document Number ES9038PRO - 8 CHANNEL				Rev 1.3
Date:	Monday, October 03, 2016		Sheet	1 of 7	



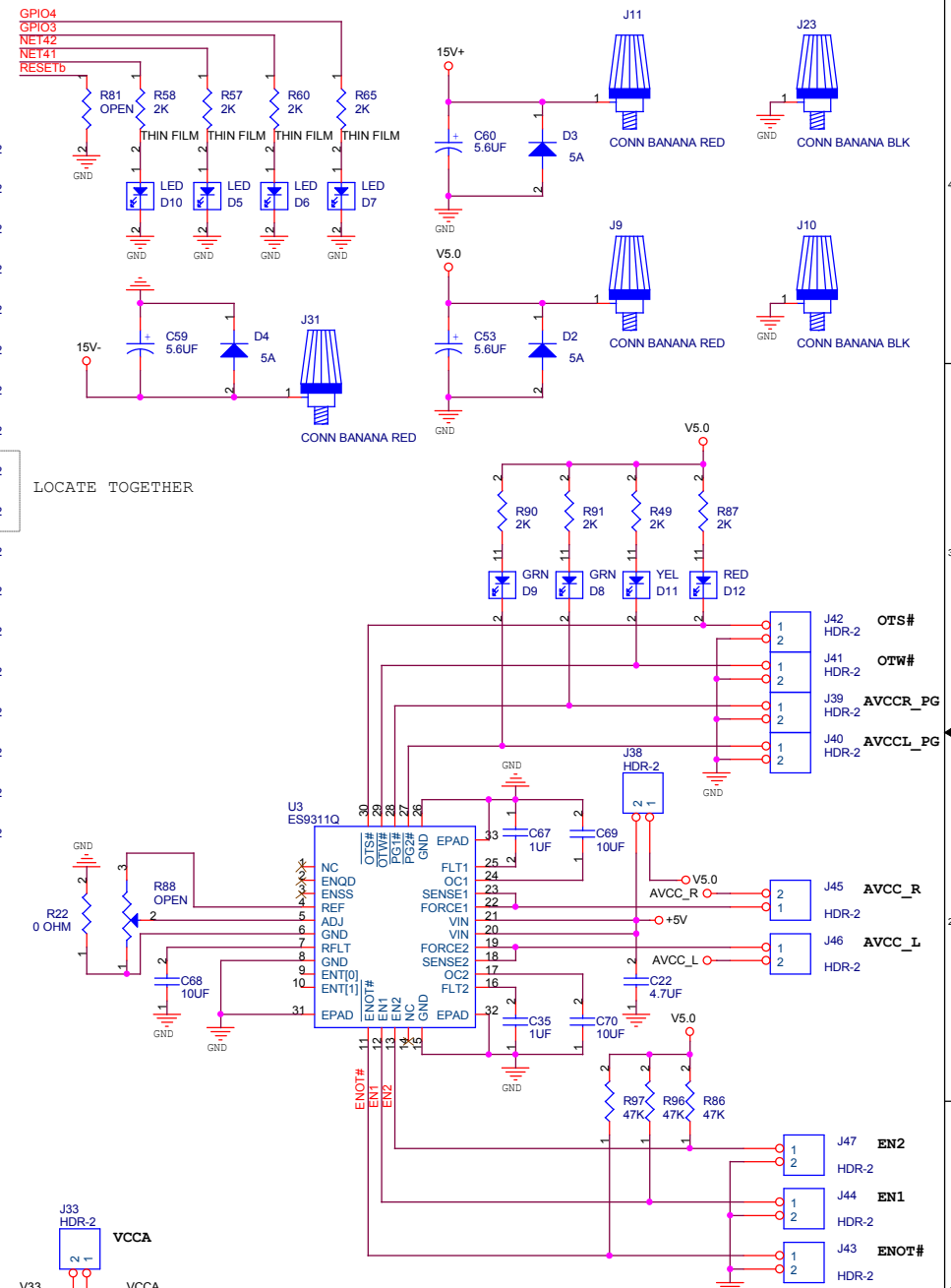
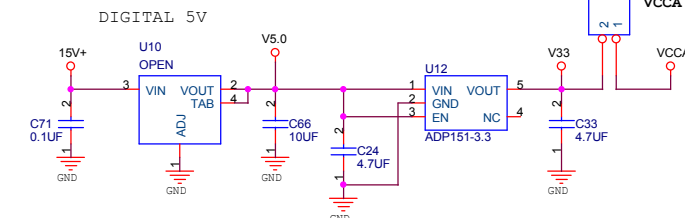
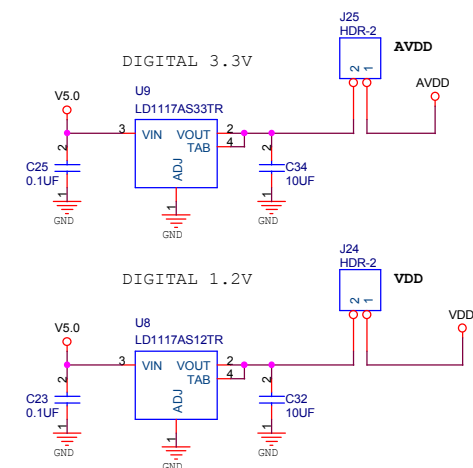
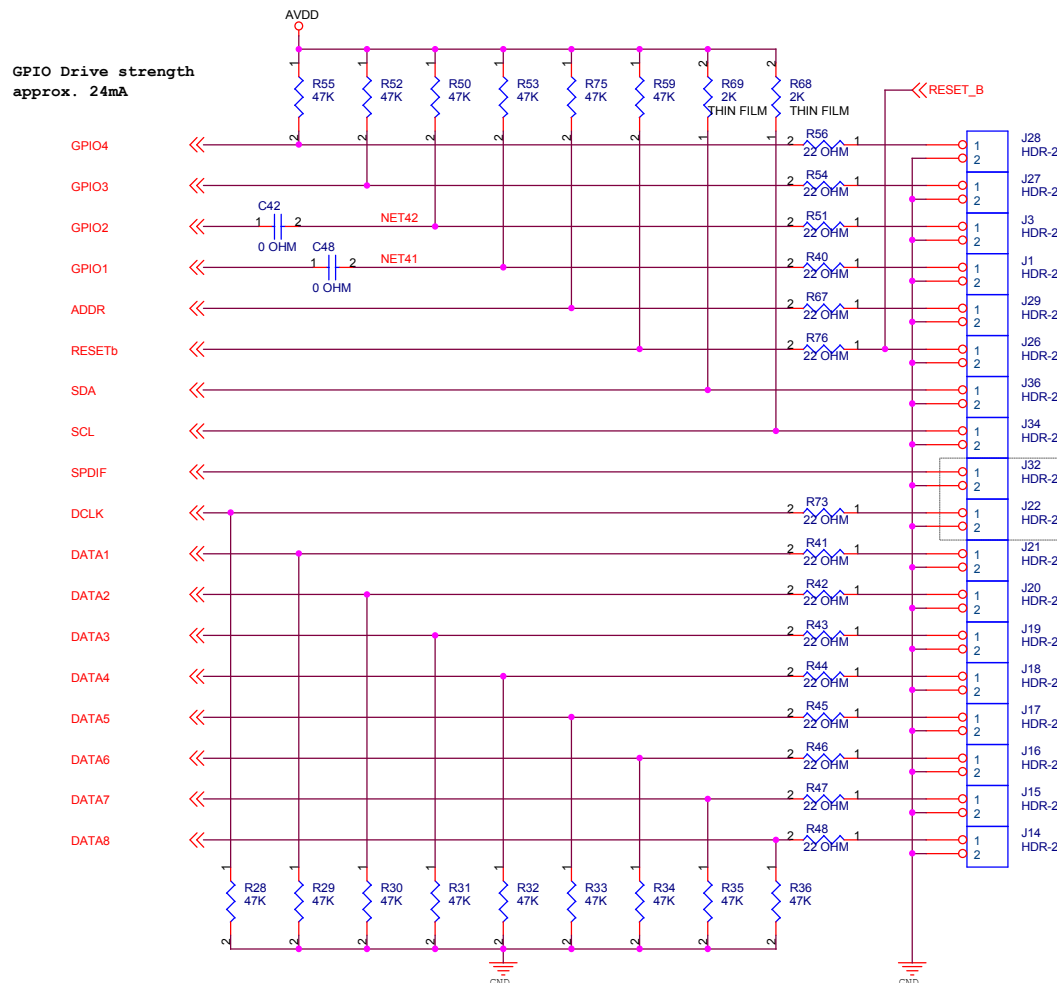








GPIO Drive strength  
approx. 24mA



**ESS TECHNOLOGY, INC.**

Title			
CONNECTORS, POWER REG			
Size	Document Number	Rev	
	ES9038PRO - 8 CHANNEL	1.3	
Date:	Monday, October 03, 2016	Sheet	7 of 7