



Duquesne Light
411 7th Ave.
Mail-Drop 15-1
Pittsburgh PA 15219

My Electric Use Report

Account number: 1680510000
Report period: 02/14/16–05/11/16

We are pleased to provide this personalized report to you as part of Duquesne Light's metering infrastructure upgrade.

This is the first of two paper reports introducing you to the advanced and insightful tools available online.



This information and more is available at:
DuquesneLight.com/MyElectricUse

0035865 3021-C12-I -P35900-730880

*****AUTO**5-DIGIT 15242 T69



EDWARD J SIMON
101 N MAIN ST
PITTSBURGH PA 15215-2018



Take control of your electric bill

Go online now for personalized energy savings ideas!



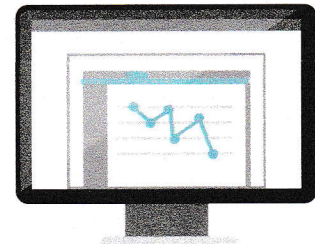
Understand how
and when your
home uses energy



Avoid surprises in
your bill with email or
phone alerts



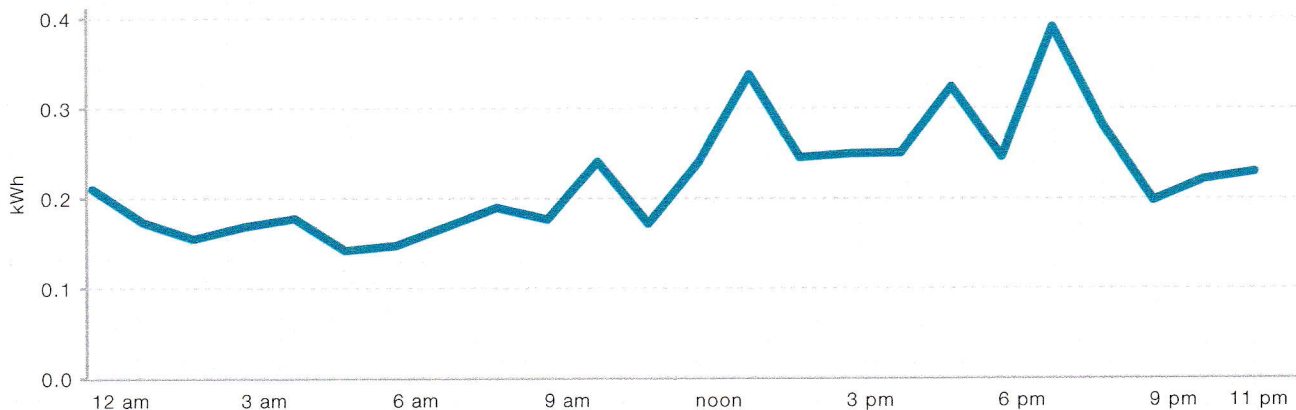
See what your bill is
likely to be — before
it arrives



Log on today at DuquesneLight.com/MyElectricUse.

An Average Day Last Month

On average, you used the most from noon – 12 am.
Think about what uses electricity during this time.



Do you use more on weekdays or weekends? Find out at DuquesneLight.com/MyElectricUse

Visit the online portal for more information at DuquesneLight.com/MyElectricUse