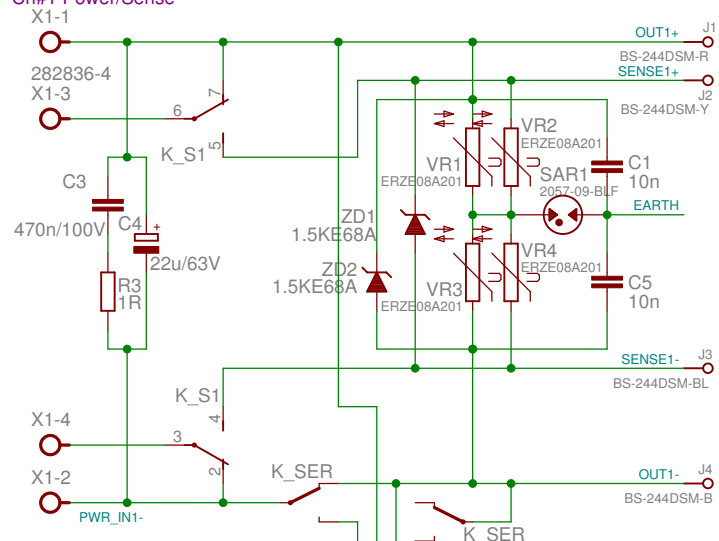
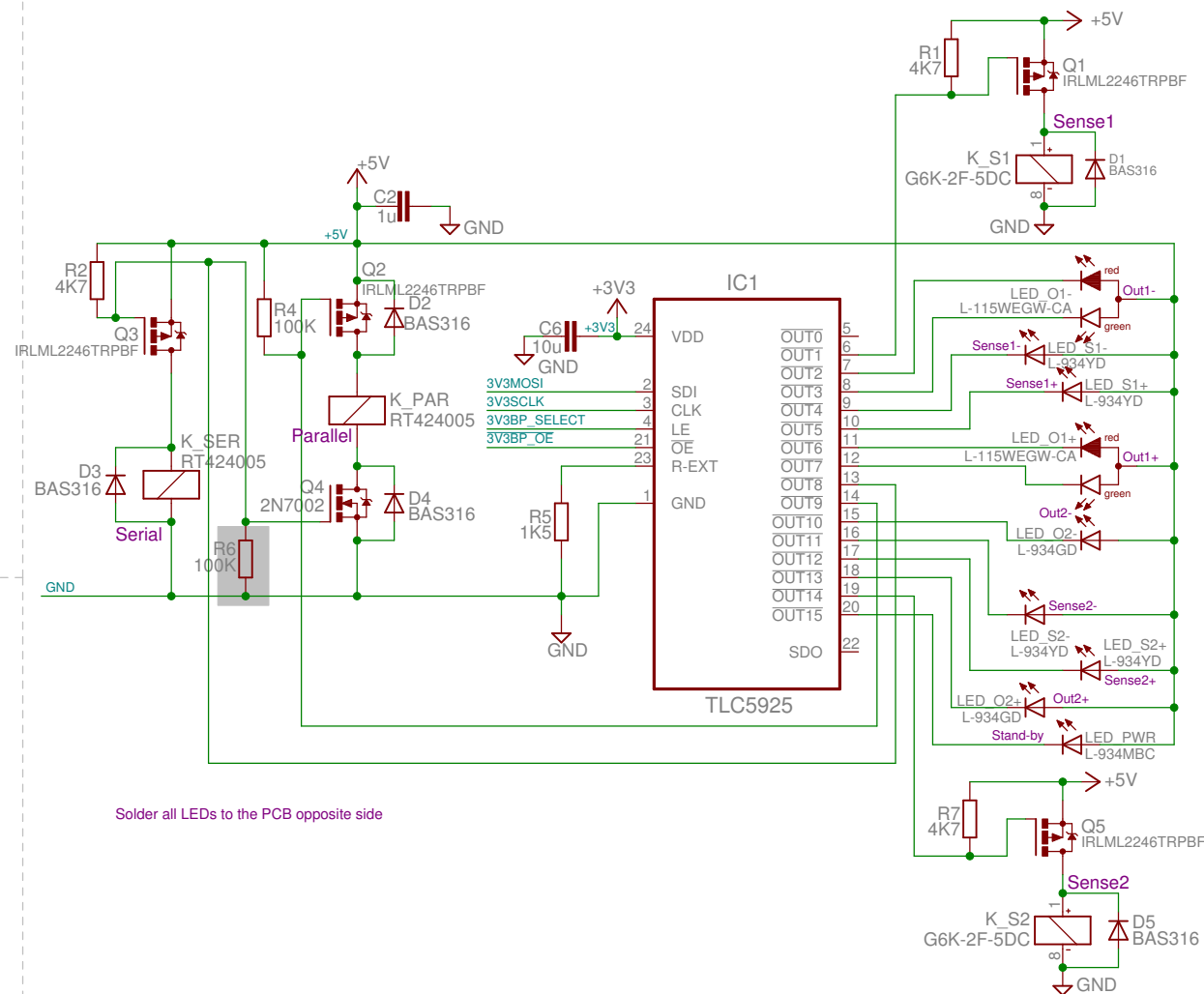
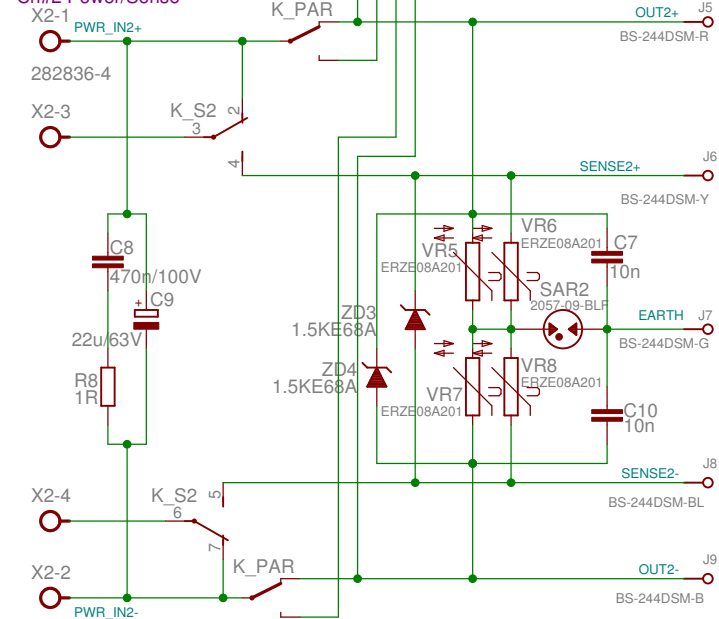


### Ch#1 Power/Sense



### Ch#2 Power/Sense



Solder all LEDs to the PCB opposite side

Remote sensing and outputs interconnector  
Output terminal protection

TITLE: EEZ Arduino shield+BP r1B12a

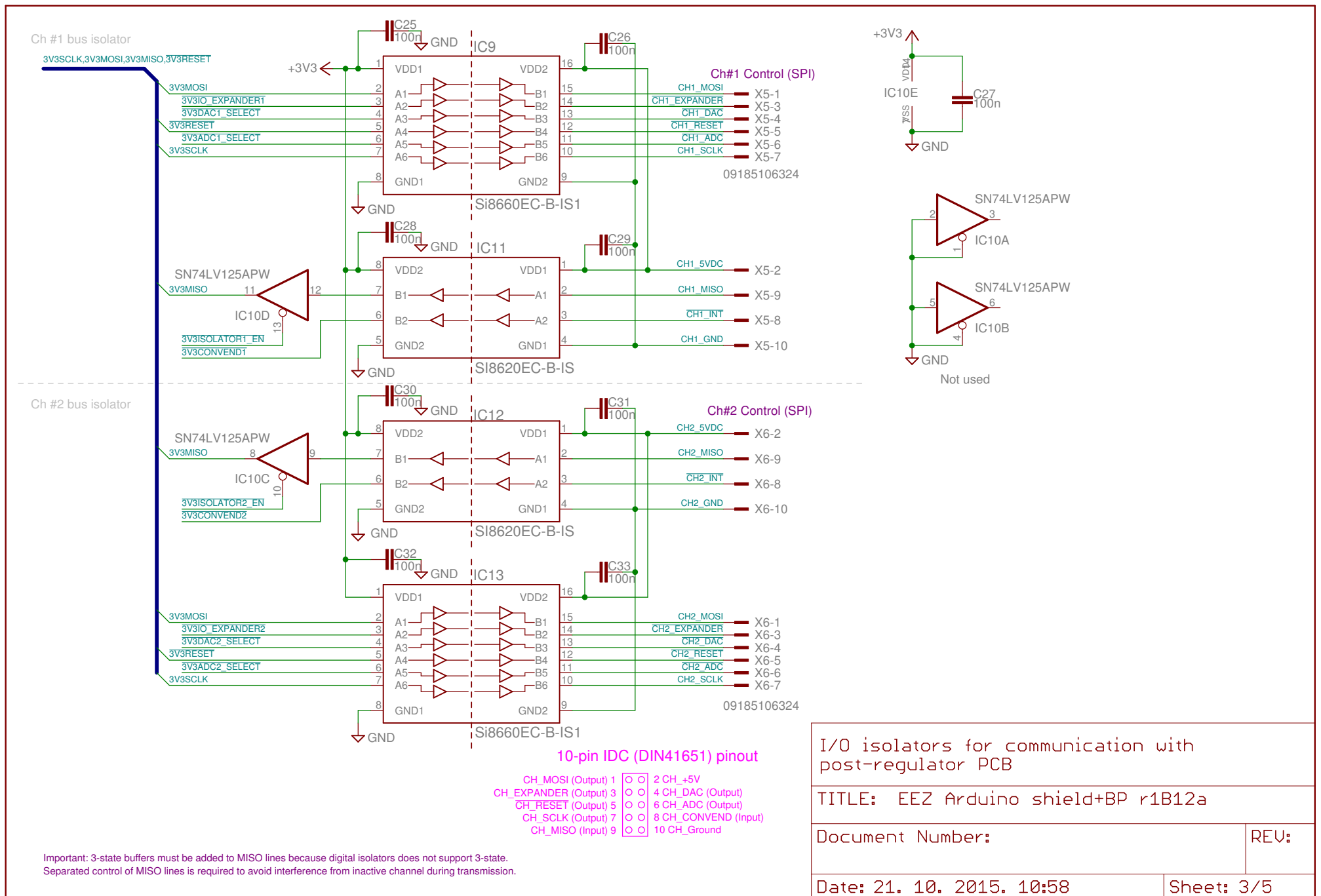
Document Number:

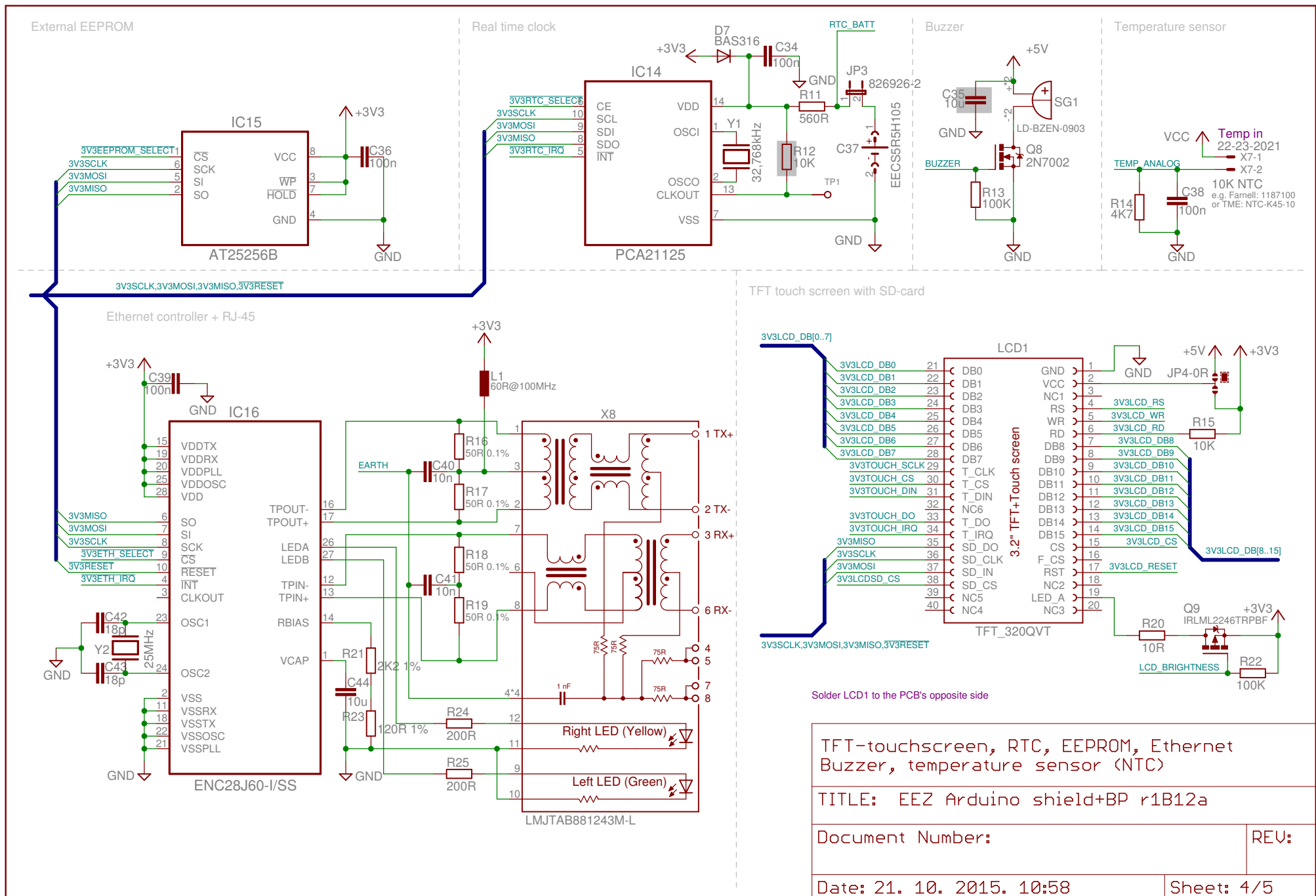
REV:

Date: 21. 10. 2015. 10:58

Sheet: 1/5







TFT-touchscreen, RTC, EEPROM, Ethernet Buzzer, temperature sensor (NTC)

TITLE: EEZ Arduino shield+BP r1B12a

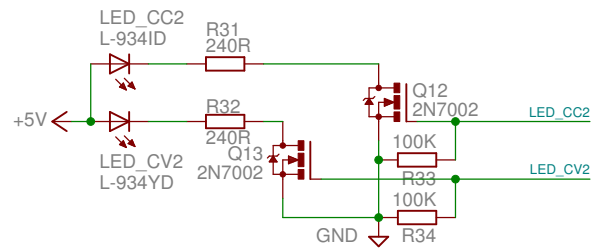
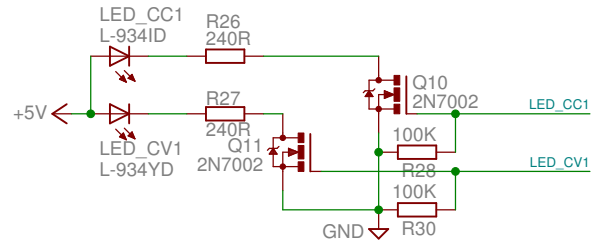
Document Number:

REV:

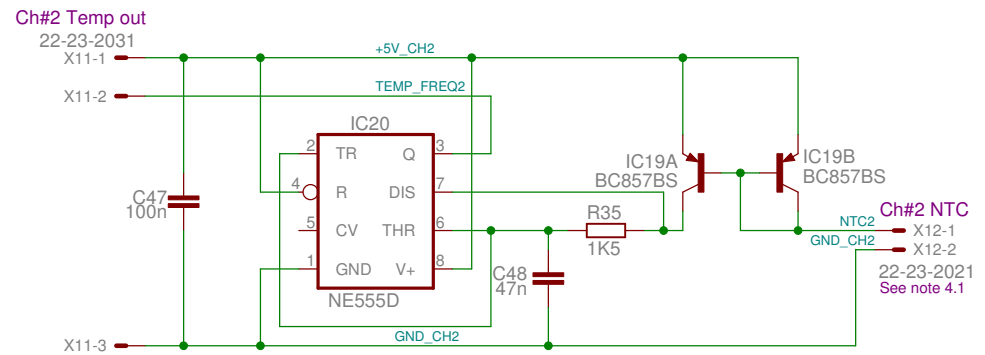
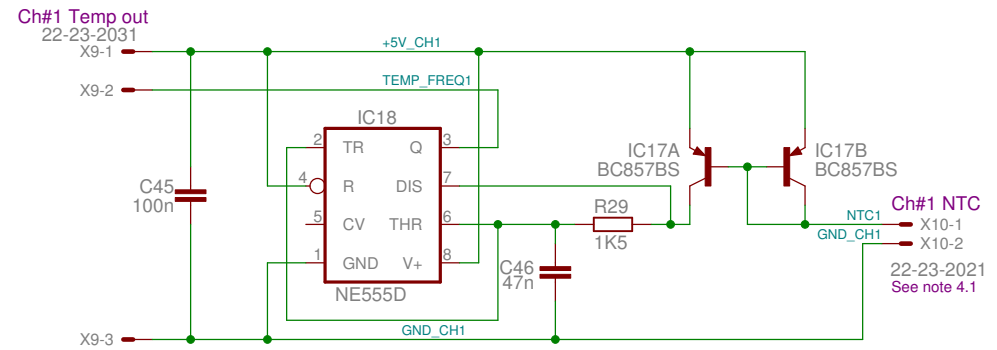
Date: 21. 10. 2015. 10:58

Sheet: 4/5

## CC/CV LED indicators



## V/F converters for battery NTC (optional)



3-pin connector  
 Channel +5V 1  
 NTC (V/F output) 2  
 Channel Gnd 3

2-pin connector  
 Battery NTC out 1  
 Battery gnd

Important: channel's supply is used for driving each NE555 separately. No not connect channels' +5V and ground with onboard supply!  
 Note 4.1: Solder X10 and X12 to the PCB's opposite side

LED CC/CV indicators  
 V/F converters for battery NTC (optional)

TITLE: EEZ Arduino shield+BP r1B12a

Document Number:

REV:

Date: 21. 10. 2015. 10:58

Sheet: 5/5