

CONSISTENCY IN KIT BUILDING.



# SIRIUS

► Sirius is a slim tower speaker construction for the demanding music lover. The tonal as well as the visual presence have a touch of understatement. Modest as the outward appearance also the reproduction is free of any exaggeration.

Proven technologies are sensibly tuned in this concept. Sirius has no accentuated treble reproduction or any emphasized bass but is convincing with a homogenous musicality.

As a result the qualities of really high class electronic begins to tell. It now pays to optimize the preconditions to operate the Sirius. As with all speaker systems the placement of the system in your living room has important influence to the reproduction result especially regarding the low end. Thanks to the slim cabinet shape this speaker system can be integrated harmonically in almost all living environment. To decouple the system from the floor we recommend the use of spikes or rubber silencers.



Thanks to the two way construction the drivers are placed close together. This together with the uncomplicated crossover results in a very fine resolution of all details and an exact staging.

## The Cabinet.

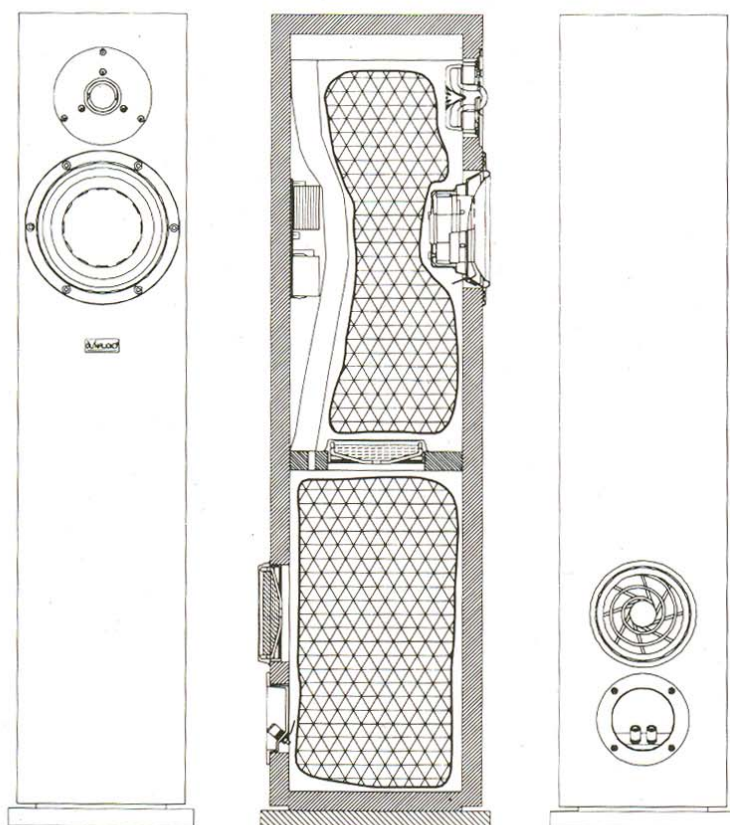
► The Sirius cabinet is very stable and resonance free thanks to relatively small wall portions. The total volume is divided into two sections which are coupled with an acoustical low pass. For the low frequencies there is sufficient volume whereas for the higher frequencies we have the optimized damping of a reduced volume.

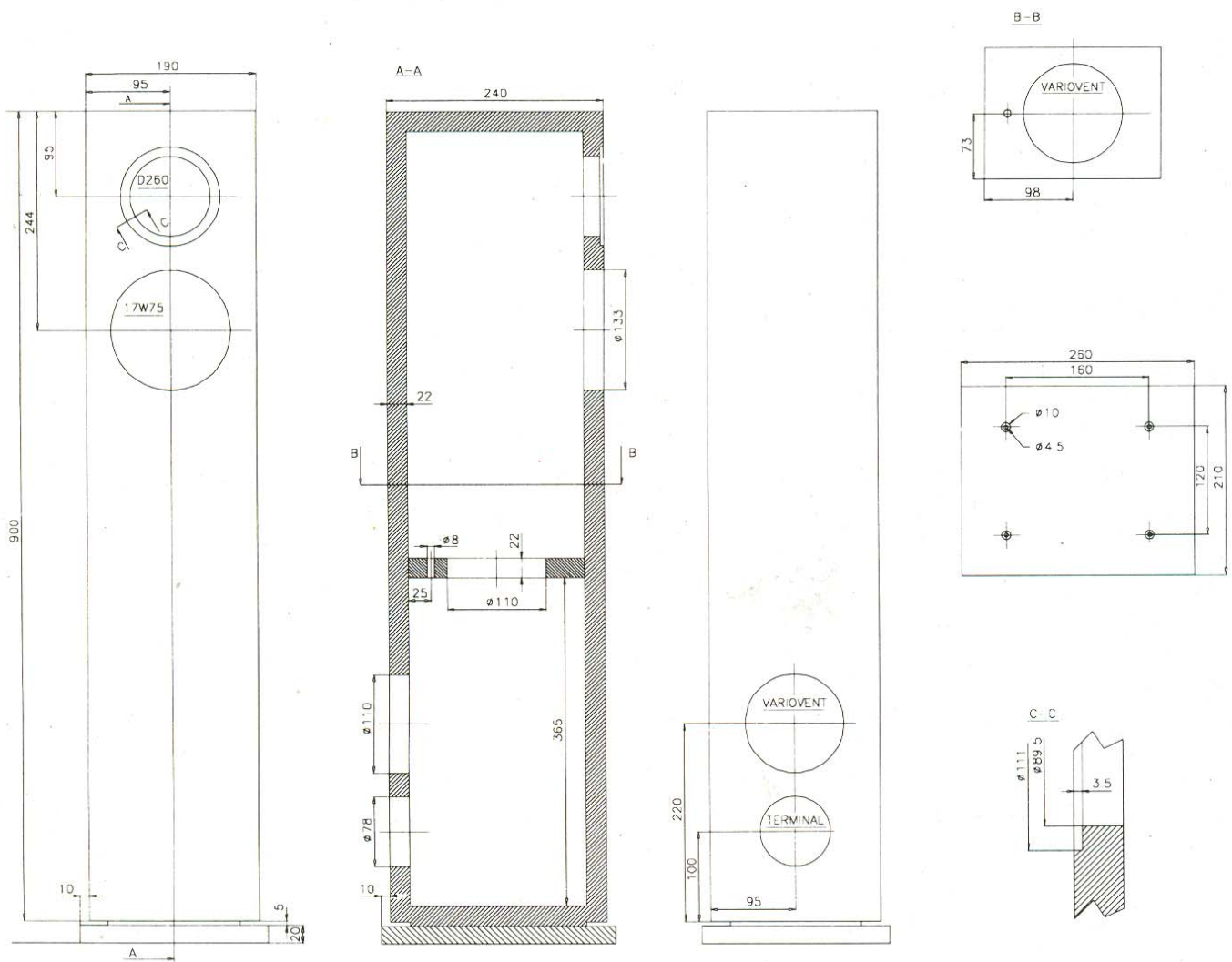
The cabinet must be crafted very carefully in all details to obtain the best possible result of this approved construction. A manual with precise hints follows with the complete kit from your dealer.

## The Woofer.

► The Dynaudio 17 W-75 is proven in innumerable high end speaker systems in the market and has set the standards. The 3"/75 mm all aluminum voice coil grants a powerful and fast driving force thanks to its low mass. Material and geometry of the cone produce a very uniform distribution pattern.

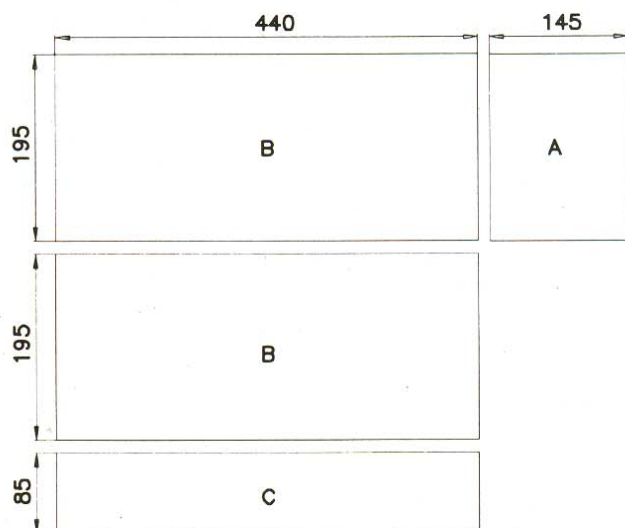
The parameters of the magnet system are tuned for a sealed cabinet. The Sirius cabinet avoids the usual emphasis of the 80 to 120 Hz area which normally results in a bass-heavy reproduction. The Sirius instead renders a deep bass which only is achieved by much bigger systems normally. The low end is always dry and precise due to fast attack response on the woofer.





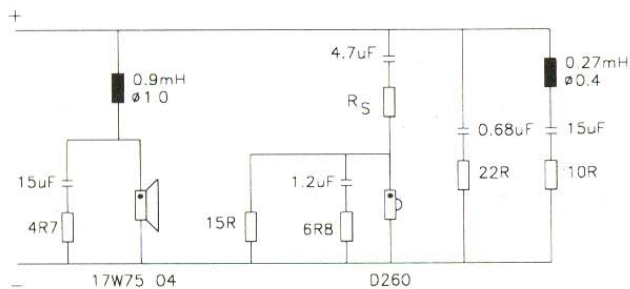
## The Tweeter.

► The Sirius employs the tweeter Dynaudio ESOTEC D-260 which is one of the latest Dynaudio developments. This softdome distincts with a musical reproduction without any sharpness as well as an unlimited dynamic. A very low resonance frequency as well as a liquid damping allow a crossover frequency of only 2.200 Hz with a 6 dB slope. This concedes an outstanding impulse response.





► Only 6dB crossover slopes result in a correct impulse response. This physical law is observed by Dynaudio also with the Sirius construction. Selection of the components is done with the wellknown diligence. Some of the components are rather expensive but their quality without alternative worldwide. Only this policy allows to unfold the entire quality of the Dynaudio drivers.



- 2 Tweeter ESOTEC D-260
- 2 Woofer 17 W-75
- 2 Variovent LQ (white damping inlay)
- 2 Variovent (yellow damping inlay)
- 2 Terminal
- 2 Sirius crossover
- 2 Bitumen damping pads 125x195 mm
- 4 Damping foam 440x195 mm
- 2 Damping foam 440x85 mm
- 2 Damping foam 195x145 mm
- 1 Damping wadding piece Q 320 g
- 1 Sealing glue LX-2
- 36 Self tapping screws 3.5x20 mm
- 1 3.2 m cable, Ø 2.5 mm<sup>2</sup>
- 2 DYNAUDIO badges
- 1 Blue-print

► Demanding only little space the Sirius staggers with its music reproduction. Anyhow, this speaker construction is aimed at people who prefer quality before quantity. Therefore the other components used such as amplifier etc. should be of adequate standard.