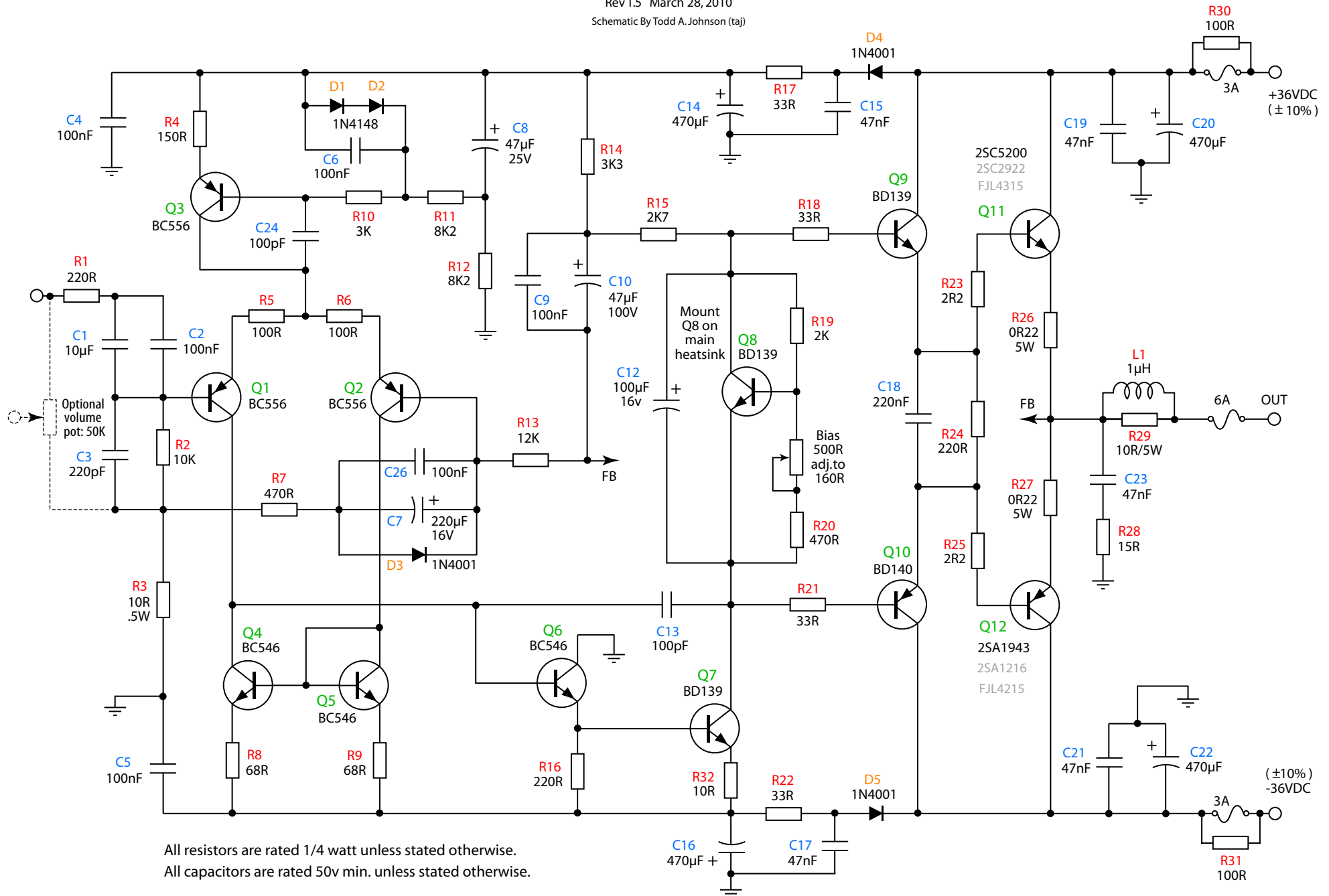


DX BLAME ES

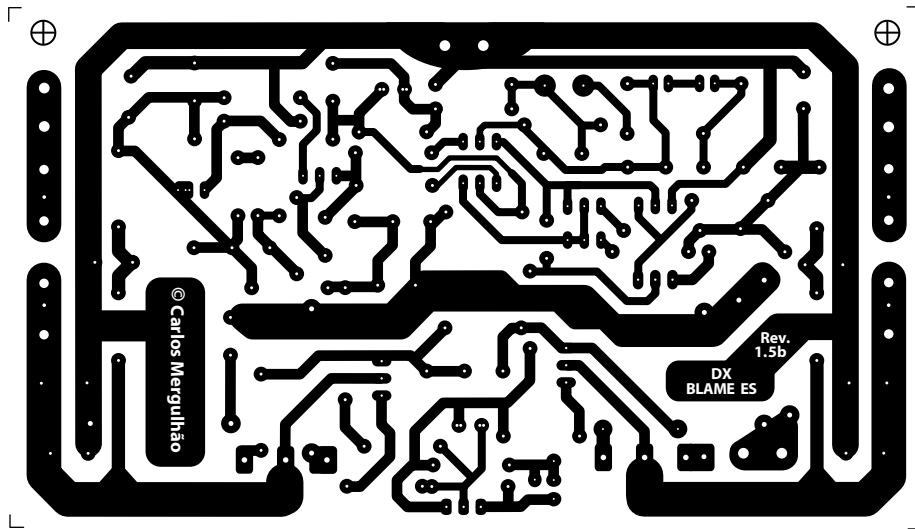
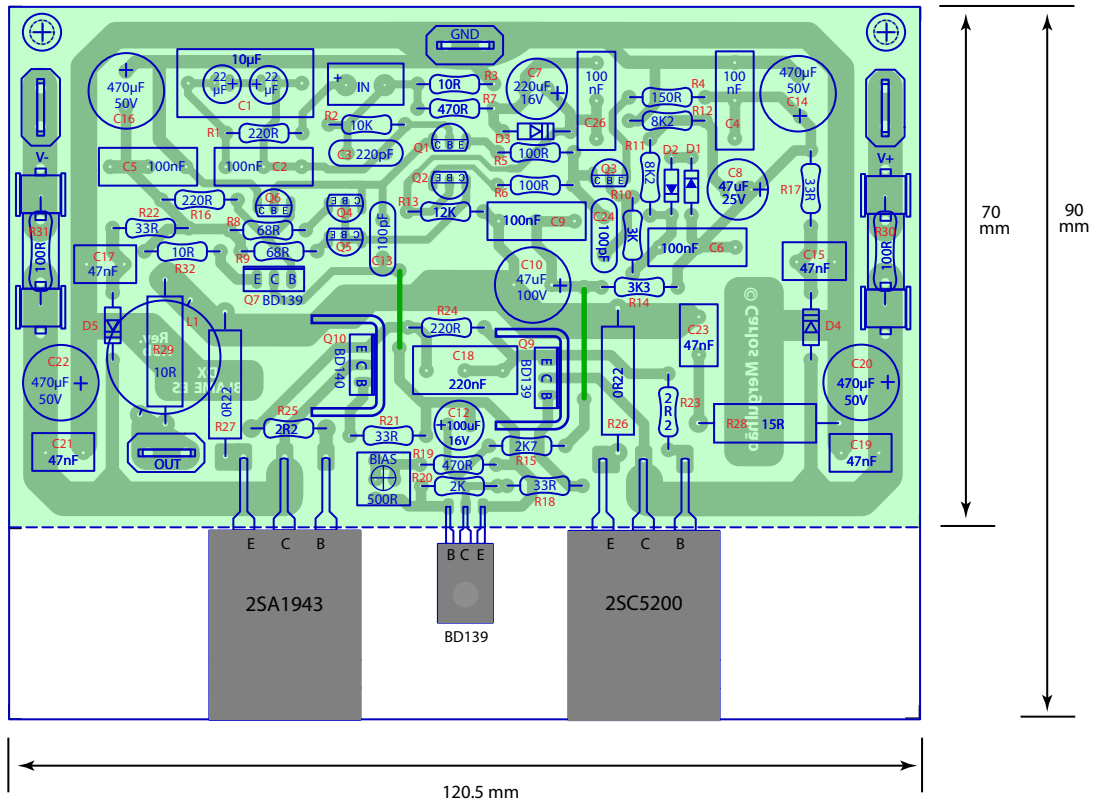
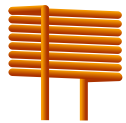
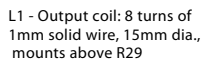
© 2009 Carlos Mergulhão

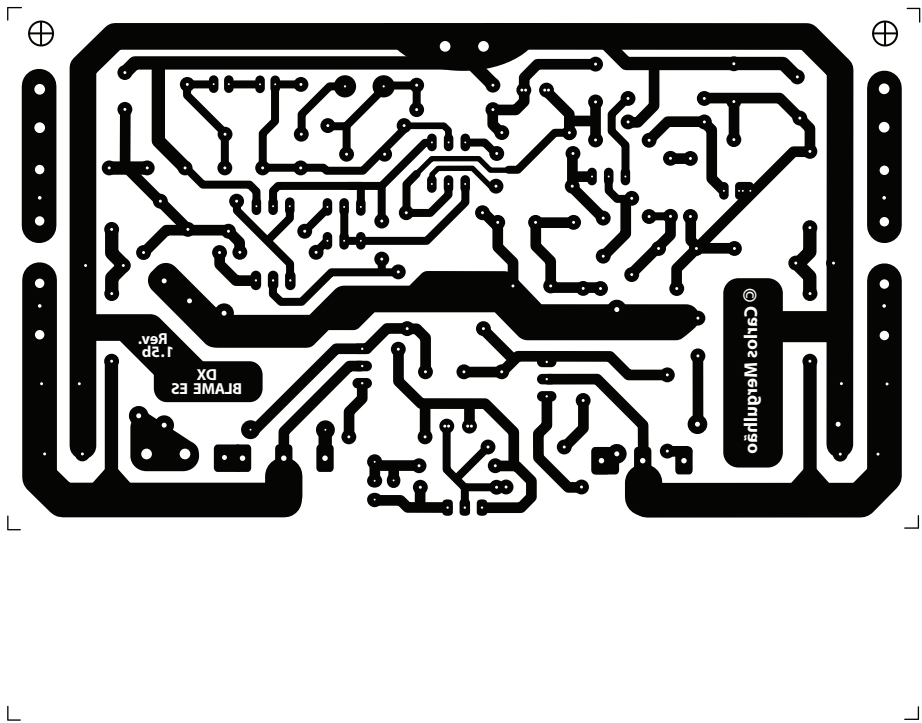
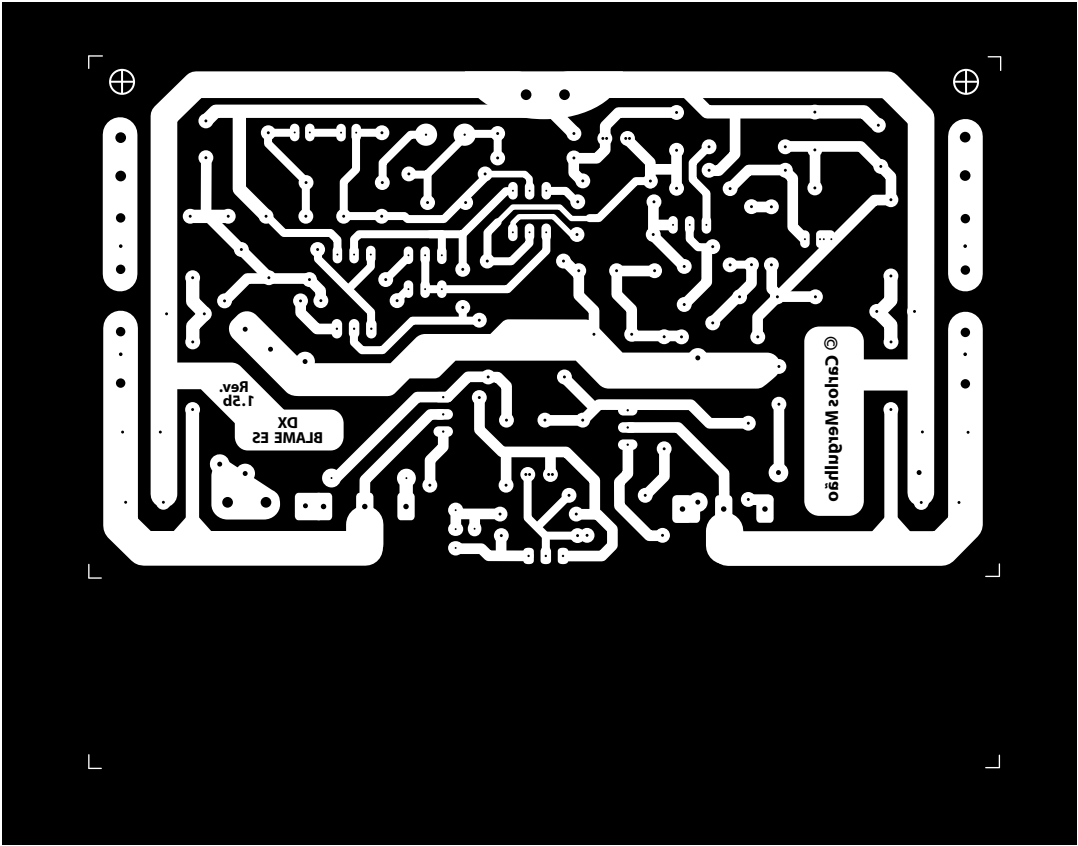
Rev 1.5 March 28, 2010
Schematic By Todd A. Johnson (taj)



All resistors are rated 1/4 watt unless stated otherwise.
All capacitors are rated 50v min. unless stated otherwise.

DX BLAME ES Rev. 1.5b - Apr. 6, 2010





DX Blame ES parts list (for one channel)

Rev. 1.5 © 2009/2010 Carlos Mergulhão

| Transistors: | | |
|--------------|---------|------------------------|
| Device # | Value | Notes |
| Q1,Q2,Q3 | BC556 | Pinout=cbe |
| Q4,Q5,Q6 | BC546 | Pinout=cbe |
| Q7,Q8,Q9 | BD139 | |
| Q10 | BD140 | |
| Q11 | 2SC5200 | or FJL4315, or 2SC2922 |
| Q12 | 2SA1943 | or FJL4215, or 2SA1216 |

| Capacitors: | | | | |
|---------------------|-----------|-------------|-------------------|--|
| Device # | Value | Lead Spc | Type | Notes + Digi-Key part # |
| C1 | 10uF | 15mm | film | DK: 495-4092-ND , or use 2 back-to-back electrolytics |
| C2,C4,C5,C6,C9,C26 | 100nF | 5 or 10mm | film | DK: polyester 495-2481-3-ND or polypropylene 495-1375-ND |
| C3 | 220pF | 5mm | mica, polystyrene | or polyprop. or NP0 or COG ceramic |
| C7 | 220uF/16v | 3.5,2.5mm | Electrolytic | |
| C8 | 47uF/25v | 2,2.5,3.5mm | Electrolytic | |
| C10 | 47uF/100v | 5mm | Electrolytic | |
| C12 | 100F/16v | 3.5,2.5mm | Electrolytic | |
| C13,C24 | 100pF | 5mm | mica, polystyrene | or polyprop. or NP0 or COG ceramic |
| C14,C16,C20,C22 | 470uF/50v | 5mm | Electrolytic | |
| C15,C17,C19,C21,C23 | 47nF | 5mm | film | aka: .047uF, polyprop. or polyester |
| C18 | 2.2uF | 5 or 10mm | film | Polyester, DK: 495-1127-ND |

| Resistors: (all are .25W metal film, except where noted) | | | |
|--|---------|-------|---|
| Device # | Value | Power | Notes |
| R1,R16, | 220R | | |
| R2 | 10K | | |
| R3 | 10R | 0.5W | |
| R4, | 150R | | |
| R5,R6 | 100R | | |
| R7 | 470R | | |
| R8,R9 | 68R | | |
| R10 | 3K | | |
| R11,R12 | 8K2 | | |
| R13 | 12K | | |
| R14 | 3K3 | | |
| R15 | 2K7 | | |
| R17,R18,R21,R22 | 33R | | |
| R19 | 2K | | |
| R20 | 470R | | |
| R23,R25 | 2R2 | | |
| R26,R27 | 0R22 | 5W | Mills non-inductive. Digi-Key: MRA05-22-ND (4x14 mm approx.) |
| R28 | 15R | 5W | (no Mills avail.) Huntington ALSR. Digi-Key: ALSR5F-15-ND (4x14 mm) |
| R29 | 10R | 5W | Mills non-inductive. Digi-Key: MRA05-10-ND (4x14 mm approx.) |
| R30,31 | 2x 100R | 1W | Optional. Mount on underside of board. Used for adjustm., not for audio. |
| R32 | 10R | | |

| Miscellaneous: | | |
|----------------------------------|--------|---|
| Device # | Value | Notes |
| D1,D2 | 1n4148 | |
| D3,D4,D5 | 1n4001 | |
| Bias Trimmer | 500R | Bourns 3362P single turn or eqv. Digi-Key: 3362P-501LF-ND |
| Power, output, ground connectors | 4x | Faston .25" male. Digi-Key: A29938CT-ND |
| Fuse holders (5x20 mm fuses) | 4x | Digi-Key: F063-ND or eqv., need 2 per fuse |
| Heatsinks for drivers | 2x | Like Digi-Key: HS106-ND but not sure if these fit. Should do. |