

---

- **Analog Input Sensitivity adjusting:**

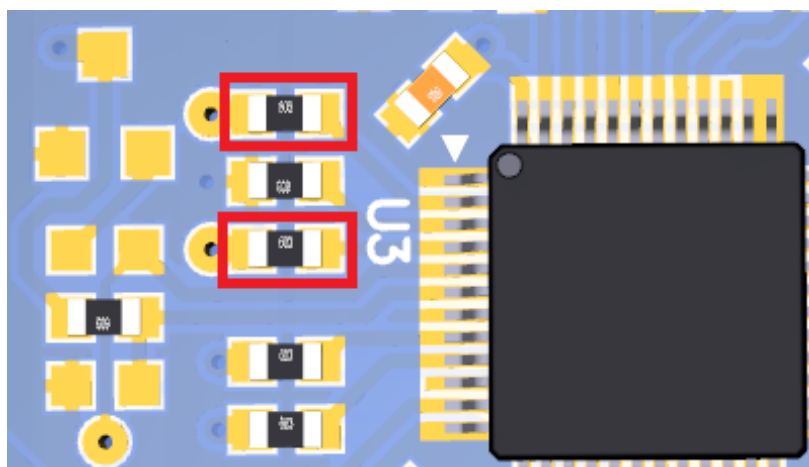
By default, the design setting on this product, compatible with most of the DAC device including low level output from a cell phone, it takes 1Vrms input level for a sensitive input to get rate output power. But in some case user keep using other high level output DAC device and the output level is hard to adjust at some point, then take this case into account, by changing a smaller setting in circuital will be a good implementation for using higher level input device.

Below figure showing that by change 2 resistor (red marked) which are close to DSP(U3) can adjust input sensitive level as you want.

Please refer to below function and a common table for reference:

$$R = (Rms\ Input\ Voltage) \times 10K\Omega - 2K\Omega$$

RMS Input Voltage (V)	Resistor Value (kΩ)	Remark
1V	8.2(default)	1%; 0603 size
2V	18	1%; 0603 size
3V	28	1%; 0603 size



**Figure8: Input sensitivity resistor**