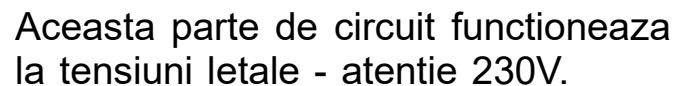


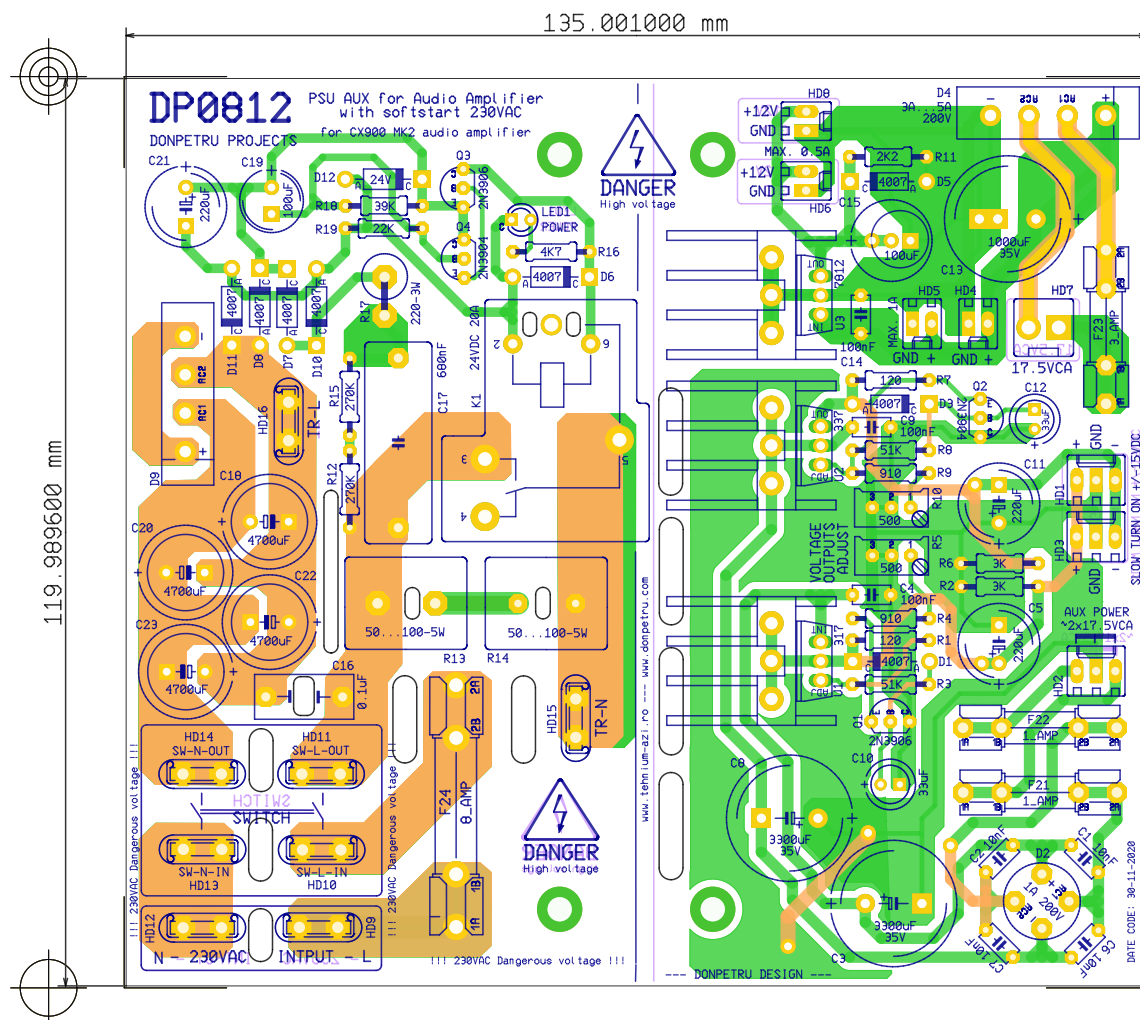
Title: DP0812 - PSU AUX for Audio Amplifier with softstart 230VAC			
Size: A3	Document N: 0001		Revision:
Date:	30-11-2020	Sheet	1 of 2

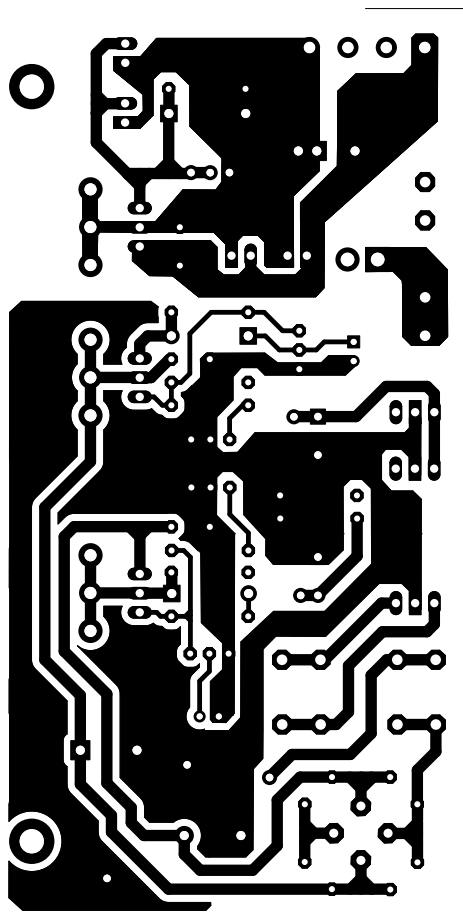
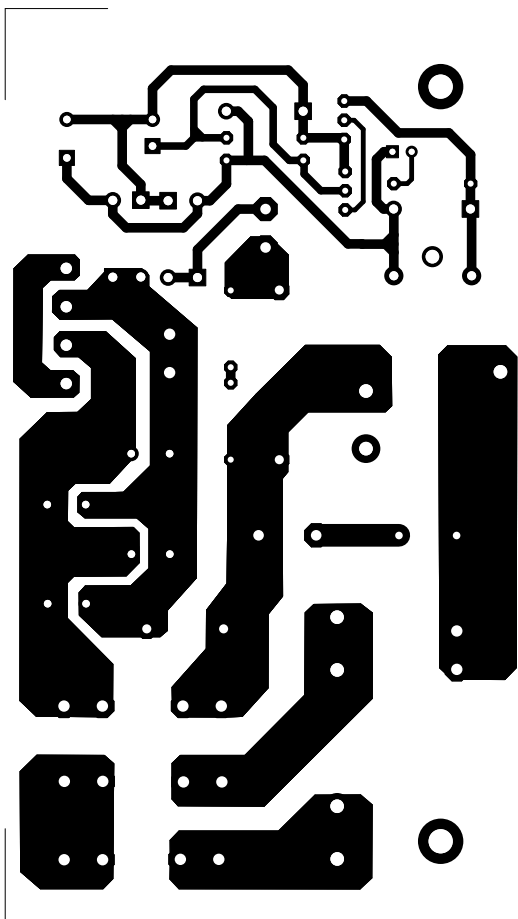


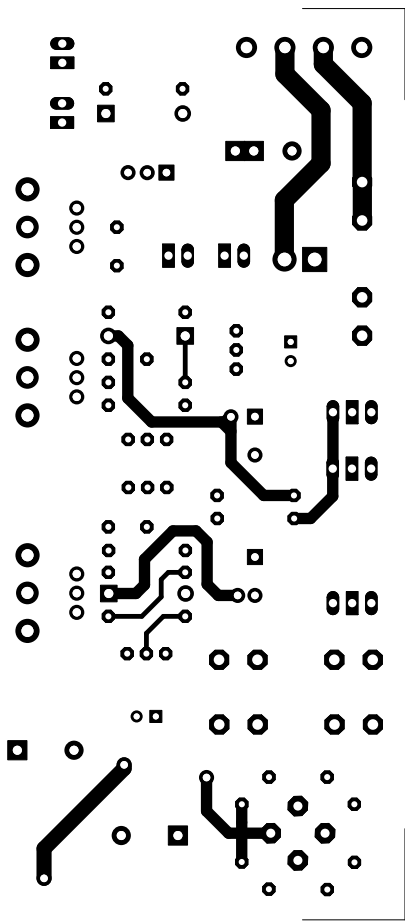
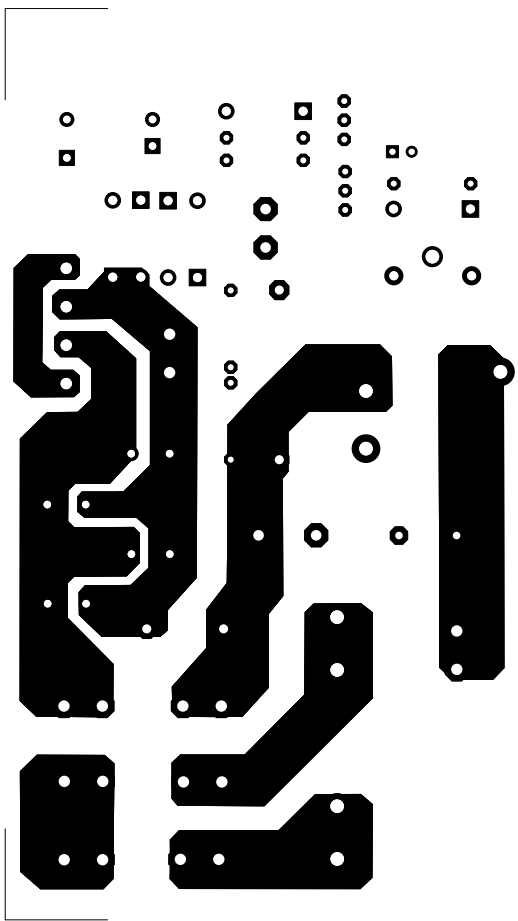
Title: DP0812 - PSU AUX for Audio Amplifier with softstart 230VAC			
Size: A3	Document N: 0001		Revision:
Date:	30-11-2020	Sheet	2 of 2

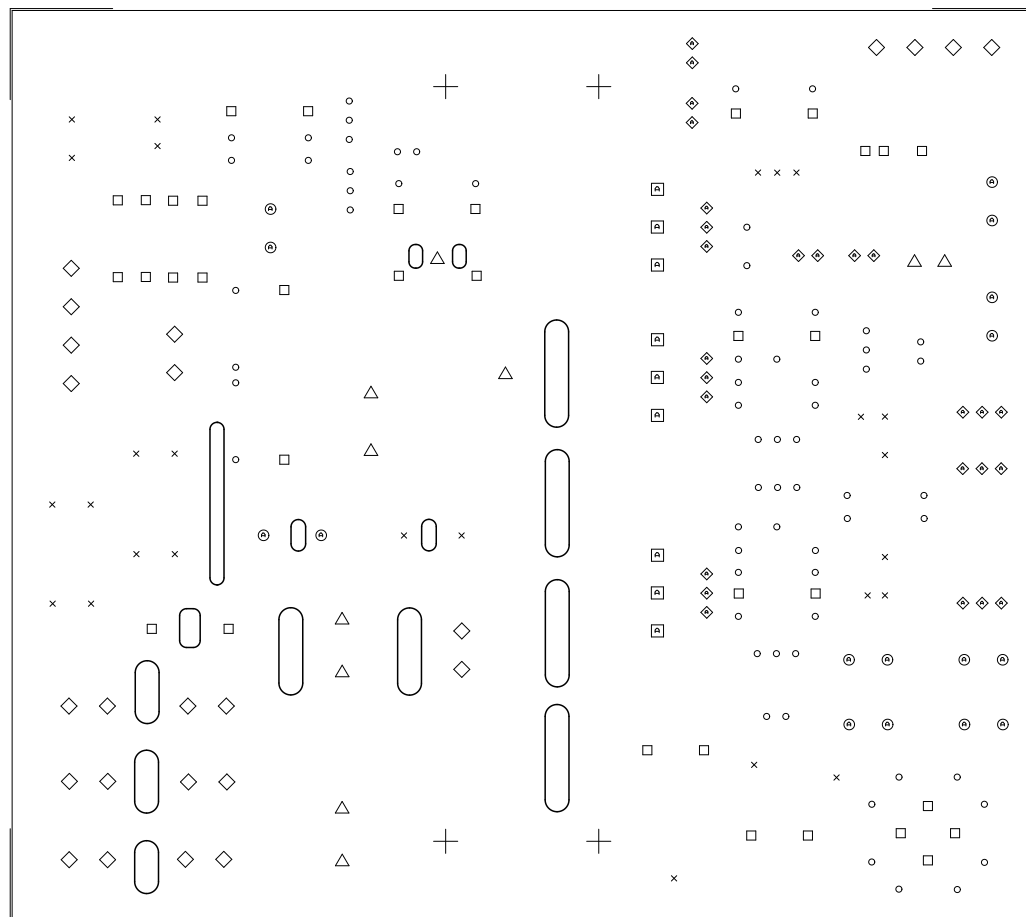
## DP0812 - B.O.M. (Bill of materials)

Quantity	Value	RefDes	Description
1	LM317BT	U1	ST Microelectronics, IC: positive voltage regulator; linear,adjustable; 1.2÷37V; 1.5A; TO220AB
1	LM337SP	U2	ST Microelectronics, IC: negative voltage regulator; linear,adjustable; 1.2÷37V; 1.5A; TO220AB
1	LM7812CT	U3	TEXAS INSTRUMENTS, IC: voltage regulator; linear, fixed; 12V; 1.5A; TO220-3
2	2N3904	Q2, Q4	Transistor: NPN; bipolar; 40V; 200mA; 625mW; TO92
2	2N3906	Q1, Q3	Transistor: PNP; bipolar; 40V; 200mA; 625mW; TO92
1	B125C1500G-E4/51	D2	VISHAY, Single-phase bridge rectifier; Urmx: 200V; If: 1.5A; Ifsm: 50A
1	GBU6D	D4	DIOTEC SEMICONDUCTOR, Single-phase bridge rectifier; Urmx: 200V; If: 6A; Ifsm: 158A
1	GBU1510A	D9	YANGJIE TECHNOLOGY, Single-phase bridge rectifier; Urmx: 1kV; If: 15A; Ifsm: 220A
1	R30N3011851024	K1	RELPOL, Relay: electromagnetic; SPDT; Ucoil: 24VDC; 30A; Series: R30N; 0.9W
8	1N4007	D6, D7, D8, D10, D11	DIOTEC SEMICONDUCTOR, Diode: rectifying; THT; 1.3kV; 1A; Ammo Pack; Ifsm: 27A; DO41
1	BZX85C24	D12	VISHAY, Diode: Zener; 1.3W; 24V; Ammo Pack; DO41
1	THT LED 3MM	LED1	KINGBRIGHT ELECTRONIC, LED; 3mm; red; 20÷125mcd; 50°; Front: convex
2	SR 500Ω	R5, R10	VISHAY, T93YA501KT20, Potentiometer: mounting; multiturn; 500Ω; 500mW; THT; ±10%; linear
2	100Ω	R13, R14	ROYAL OHM, PRMAAWJW101B00, Resistor: wire-wound; cement; THT,vertical; 100Ω; 10W; ±5%
1	220Ω	R17	ROYAL OHM, PMR03SJ0221A19, Resistor: power metal; THT; 220Ω; 3W; ±5%; Ø5.5x16mm
2	120Ω	R1, R7	Resistor: metal film; THT; 0.6W; ±1%; Ø2.5x6.8mm
2	910Ω	R4, R9	
1	2.2kΩ	R11	
2	3kΩ	R2, R6	
1	4.7kΩ	R16	
1	22kΩ	R19	
1	39kΩ	R18	
2	51kΩ	R3, R8	
2	270kΩ	R12, R15	
4	10nF - 250V or 500V	C1, C2, C6, C7	SR PASSIVES, CCH-10K, Capacitor: ceramic; 10nF; 500V; ±20%; THT; pitch 5mm
3	100nF - 100V	C4, C9, C14	KEMET, R82EC3100AA70K, Capacitor: polyester; 100nF; 63VAC; 100VDC; Pitch: 5mm; ±10%
1	0.1µF - 275VAC X2	C16	KEMET, R46KF31000M1K, Capacitor: polypropylene; X2; 100nF; 10mm; ±10%; 13x6x12mm; 275VAC
1	680nF - 275VAC	C17	KEMET, R46KN368040P0M, Capacitor: polypropylene; X2; 680nF; 22.5mm; ±20%; 26.5x7x16mm
2	33µF - 50V	C10, C12	NICHICON, ULD1H330MED, Capacitor: electrolytic; THT; 33uF; 50VDC; Ø6.3x11mm; Pitch: 2.5mm
1	100µF	C15	Jb Capacitors, JRG-100U/50, Capacitor: electrolytic; THT; 100uF; 50VDC; Ø10x12mm; Pitch: 5mm --- OR --- SAMWHA, RD1E107M6L011BB, Capacitor: electrolytic; THT; 100uF; 25VDC; Ø6.3x11mm; Pitch: 2.5mm
3	220µF-50V	C5, C11, C21	Jb Capacitors, JRG1H221M05001000200000B, Capacitor: electrolytic; THT; 220uF; 50VDC; Ø10x20mm; Pitch: 5mm
1	100µF	C19	Elite, PF1H101MNN08B5, Capacitor: electrolytic; THT; 100uF; 50VDC; Ø8x11.5mm; Pitch: 3.5mm
1	1000µF - 50V or 63V	C13	SAMWHA, CE-1000/63PHT, Capacitor: electrolytic; THT; 1000uF; 63VDC; Ø16x25mm; Pitch: 7.5mm
2	3300µF - 35V	C3, C8	NICHICON, UKA1V332MHD, Capacitor: electrolytic; THT; 3300uF; 35VDC; Ø16x35.5mm; Pitch: 7.5mm
4	4700µF - 10V	C18, C20, C22, C23	NICHICON, UVZ1A472MHD, Capacitor: electrolytic; THT; 4700uF; Ø12.5x25mm; Pitch: 5mm
2	1A_Fuse 5X20mm	F21, F22	LITTELFUSE, 0234001.MXP, Fuse: fuse; medium time-lag; 1A; 250VAC; cylindrical,glass
1	3A_Fuse 5X20mm	F23	LITTELFUSE, 0234003.MXP, Fuse: fuse; medium time-lag; 3A; 250VAC; cylindrical,glass
1	8A_Fuse 6.3x32mm	F24	ESKA, 632.326, Fuse: fuse; time-lag; 8A; 250VAC; cylindrical,glass
1	CE156 Connector	HD7	TE Connectivity, 640445-2, Socket; wire-board; male; PIN: 2; pitch 3.96mm; THT; MTA-156; tinned
4	CE100 Connector	HD4, HD5, HD6, HD8	PANCON, MUSS100-2-D_E, Socket; wire-board; male; PIN: 2; 2.54mm; THT; MAS-CON; tinned
3	CE100 Connector	HD1, HD2, HD3	PANCON, MUSS100-3-D_E, Socket; wire-board; male; PIN: 3; 2.54mm; THT; MAS-CON; tinned
8	Terminal: flat; 6.3mm	HD9, HD10, HD11, HD12, HD13, HD14, HD15, HD16	TE Connectivity, 1217861-1, Terminal: flat; 6.3mm; 0.8mm; male; THT; tinned; straight









Drill Legend				
All units are in mm				
Symbol	Size	Quantity	Plated	Slot Length
○	0.8000	66	PTH	0 (ROUND)
×	1.0000	26	PTH	0 (ROUND)
◊	1.1000	26	PTH	0 (ROUND)
◻	1.2000	35	PTH	0 (ROUND)
⊙	1.4000	16	PTH	0 (ROUND)
◇	1.5000	24	PTH	0 (ROUND)
◻	1.6000	9	PTH	0 (ROUND)
△	1.8000	10	PTH	0 (ROUND)
+	3.2000	4	NPTH	0 (ROUND)





