



# XY-1

## XY SERIES

### Dual 12-inch hybrid loaded LF loudspeaker

#### KEY FEATURES

- Hybrid low-mid section
- Suitable for various configurations
- Compatible with various rigging accessories
- Impact-resistant finish

#### HYBRID LOW-MID SECTION

A hybrid dual 12-inch chamber in the low-mid section enables the drivers to produce precise notes. Water-resistant treatment allows the LF drivers to deliver a natural tightness rather than using thicker speaker cone material which would add weight and slow down the speed of the cones.

#### APPLICATIONS

Versatile & easy to install for various venues and events.

#### SPECIFICATIONS

Product Name	XY-1
Loudspeaker Type	Dual 12" hybrid loaded LF loudspeaker
Frequency Response (+/- 3dB)*1.	55 Hz~400 Hz (-10 dB @ 45 Hz)
Sensitivity (1W /1m)*2.	102 dB
Nominal Impedance	4 Ω
Power Handling AES*3.	1400 W AES, 5600 W Peak
Max SPL*4.	133 dB (cont.), 139 dB (peak)
Driver Configuration	12" neodymium cone driver x 2
Connectors	Neutrik speakON™ NL 4 x 2
Dimensions (W x H x D)	530 x 578 x 540 mm / 20.7" x 22.8" x 21.3"
Weight	34.0 kg / 74.9 lb
Enclosure	15 mm / 0.6" birch plywood
Finish	Black impact and weather-resistant textured polyurethane paint
Spare Parts	PT-XY3LF1- LF driver

\*1 Measured on-axis at 2m in an anechoic environment and referenced to 1m. | \*2 Measured in half space at 2m with 4W sine wave input and referenced to 1m. | \*3 AES Standard ANSI S4.26-1984. | \*4 Calculated at 1m and verified by subjective listening test of familiar program material.

\*Disclaimer: specifications and price are subject to change. | \*speakON is a registered trademark of Neutrik. | \*Other product, technology and company names, etc. mentioned herein are trademarks or registered trademarks of their respective owners.

Features and specifications of the products described or illustrated in this specification sheet are correct at the time of printing but could change as production changes might occur. This specification sheet may contain typographical errors and the colours of the depicted products may deviate slightly from reality. Consult your Pioneer dealer to ensure that actual features and specifications match your requirements. This specification sheet may contain references to products that may or will not be available in your country.

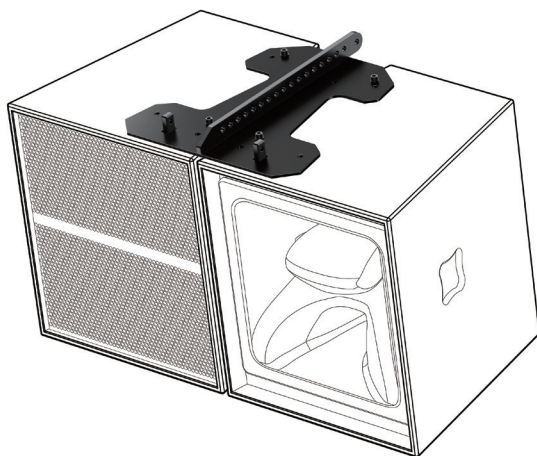
AlphaTheta EMEA Limited Artemis Building, Odyssey Business Park, West End Road, South Ruislip, HA4 6QE, UK  
AlphaTheta Music Americas, Inc. 2050 W 190th Street, Suite #109, Torrance, CA 90504, USA  
AlphaTheta Corporation 6F, Yokohama i-Mark Place, 4-4-5 Minatomirai, Nishi-ku, Yokohama, Kanagawa 220-0012 Japan



WWW.PIONEERPROAUDIO.COM

## SUITABLE FOR VARIOUS CONFIGURATIONS

The XY-1 can be quickly and easily deployed in a variety of fixed install and touring scenarios, with numerous flying and ground stacking configurations possible.



3 way horizontal deployment in low ceilings

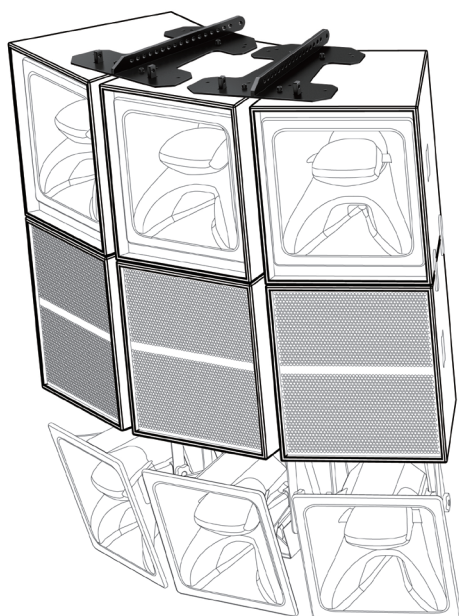
## IMPACT-RESISTANT FINISH

The XY-1 is housed in a robust wooden enclosure – ideal for guarding against bumps and scrapes on the road and in tight spaces. The speaker also features an elastothane coating for weather resistance and extra protection against impact.

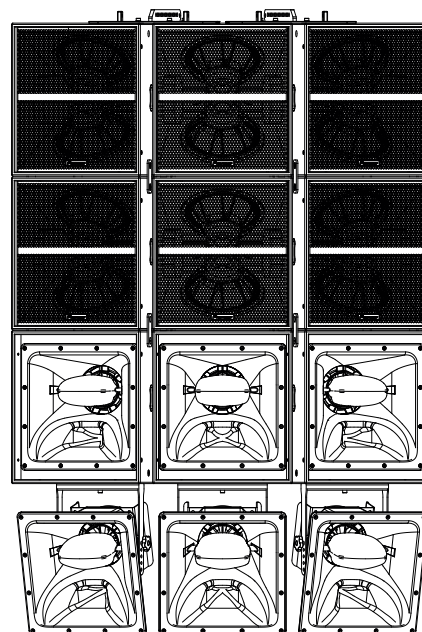


## COMPATIBLE WITH VARIOUS RIGGING ACCESSORIES

Deploy the XY-1 from low ceilings in single units or horizontal arrays using the CP-XY1VC1 flying cradle or the CP-XY1DF1 jointing plate respectively. Or create an array of up to nine speakers – 3 x 3 – using a combination of CP-XY1DF1 cradles and CP-XY1CON1 plates.



3 Way Flown Array for Medium coverage areas



Maximum deployment of Modular elements for Flown Array

Features and specifications of the products described or illustrated in this specification sheet are correct at the time of printing but could change as production changes might occur. This specification sheet may contain typographical errors and the colours of the depicted products may deviate slightly from reality. Consult your Pioneer dealer to ensure that actual features and specifications match your requirements. This specification sheet may contain references to products that may or will not be available in your country.

AlphaTheta EMEA Limited Artemis Building, Odyssey Business Park, West End Road, South Ruislip, HA4 6QE, UK  
AlphaTheta Music Americas, Inc. 2050 W 190th Street, Suite #109, Torrance, CA 90504, USA  
AlphaTheta Corporation 6F, Yokohama i-Mark Place, 4-4-5 Minatomirai, Nishi-ku, Yokohama, Kanagawa 220-0012 Japan



[WWW.PIONEERPROAUDIO.COM](http://WWW.PIONEERPROAUDIO.COM)