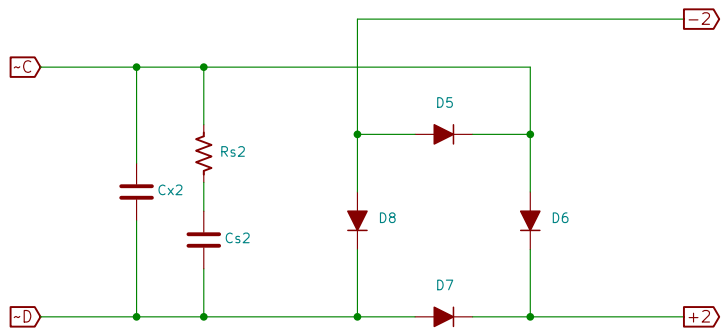


Diodes are nominally VS-ETU3006FP-M3 30A FREDs, although any equivalent in a TO220-2 package will work.

Snubber components (Cx, Rs and Cs) are ideally selected using a Quasimodo rig to measure the specific transformer to be used.

An approximation can also be made using the data-points found here:
<https://www.diyaudio.com/forums/power-supplies/313202-quasimodo-results.html>



Jeff Young

Sheet: /
 File: Double Bridge.sch

Title: Double Bridge

Size: A4
 KiCad E.D.A. kicad (5.1.0-1244-gecc5fc989-dirty)

Date:
 Rev:
 Id: 1/1