

Vacuum Tube Audio SP14 preamp vD 6-1-13

www.tubes4hifi.com

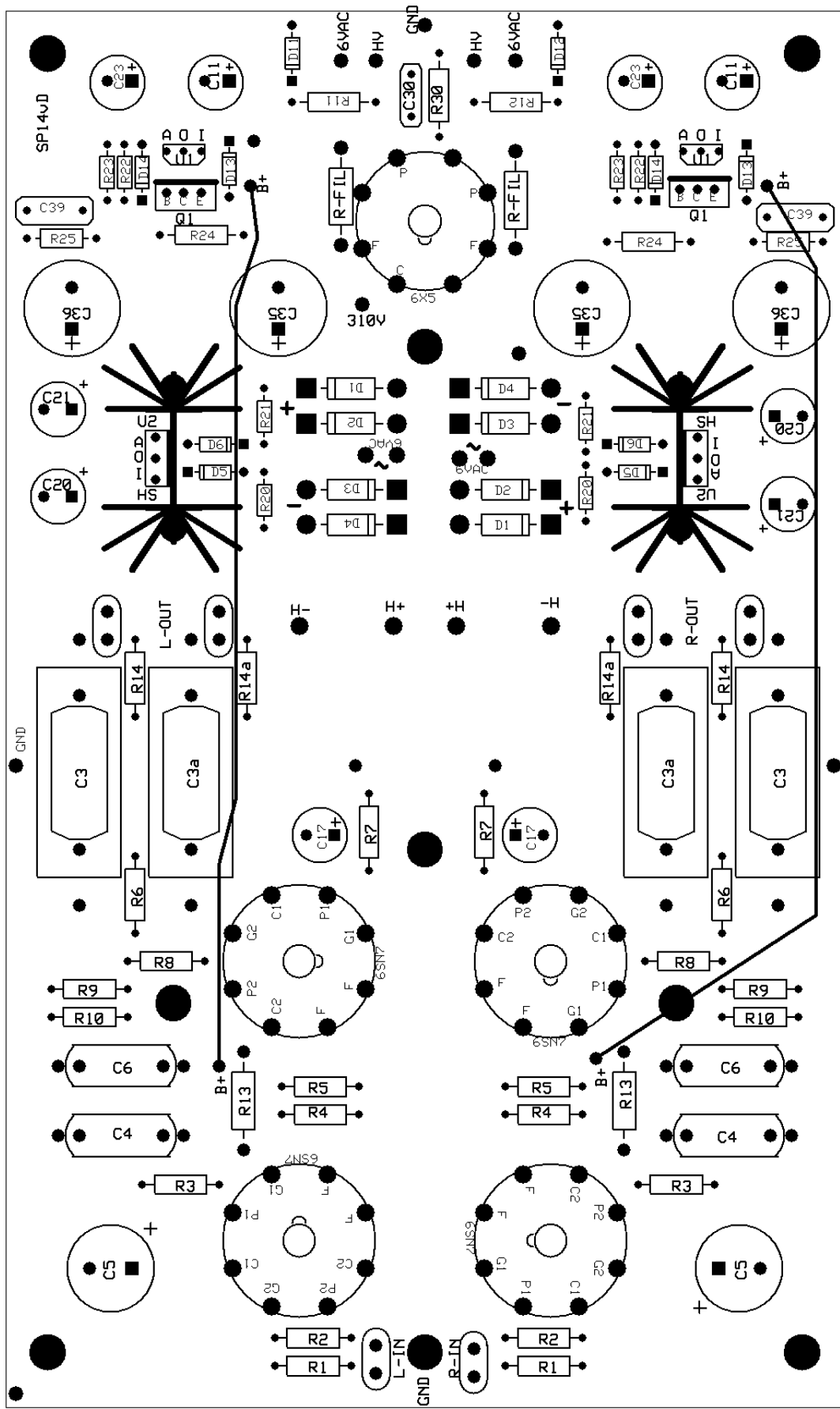
SP14 PCB

power supply section

	1	
D1-4	8	1N5822
D5- D6	4	UF4007 or HER108
D11-12	2	UF4007 or HER108
D13-14	4	UF4007 or HER108
R11-12	2	100 ohm 1w
R20	2	120
R21	2	470
R22	2	1.5K 1/4w
R23	2	330K 1/4w
R24	2	300K 1w
R25	2	100K
R30	1	6.8K 1w
R-FIL	1	1 ohm 1w (use jumper for 2 nd)
C11, C23	4	10uF 400v
C17, 20, 21	6	470uF 16v
C30	1	.01uF 1000v
C35-36	4	3300uf 25v
C39	2	0.10uF 100v
Q1	2	TIP50
U1	2	VTA HVR SILR
U2	2	LD1084V
HS	2	HEAT SINK
socket	1	8 pin
rectifier tube	1	6X5GT

LINE AMP section

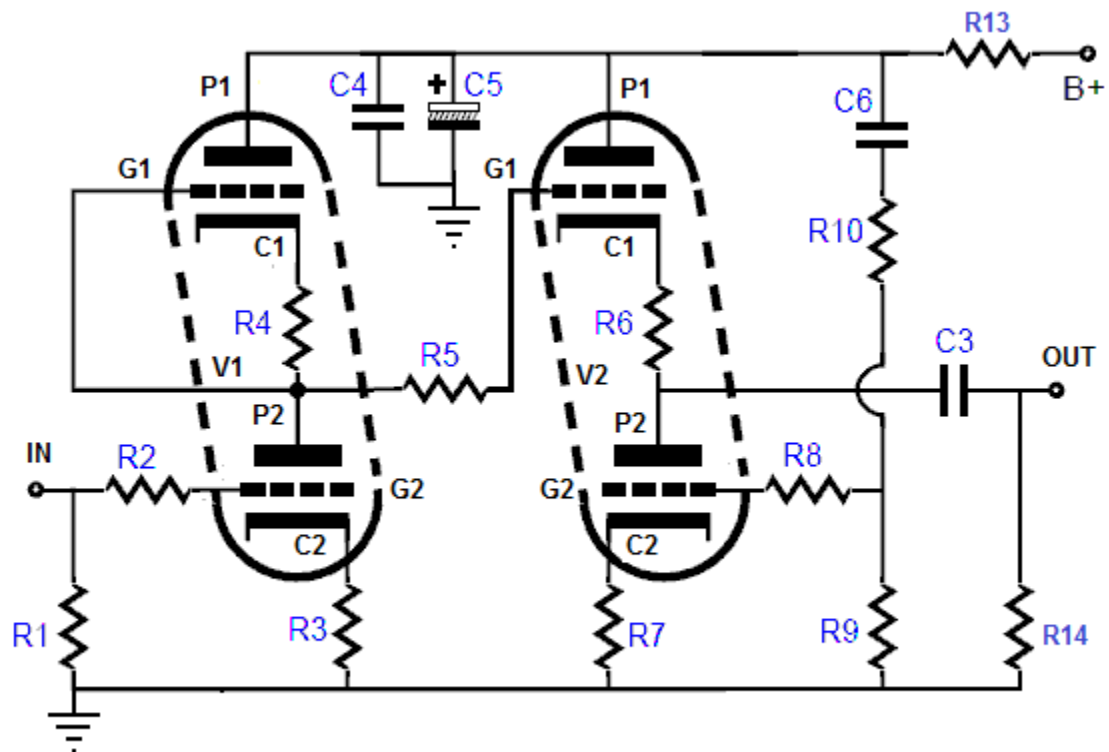
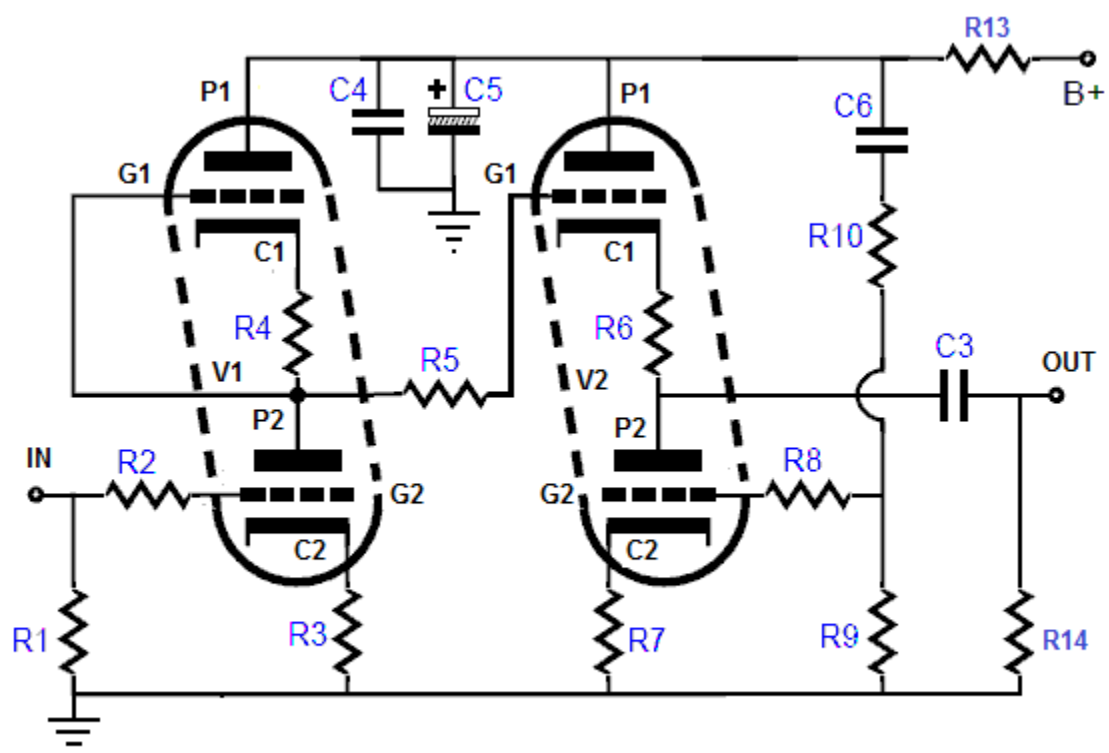
R1	2	470K
R2 5 8	6	221 or 270
R3 4	4	680 or 681
R6 7	4	330 or 332
R9	2	100K
R10	2	80.6K
R13	2	1K
R14	4	470K
C3	2	0.22 400v SoniCap or better
C4 & C6	4	0.10 400v
C5	2	47uF 400v
socket	4	8 pin
V1-4	4	6SN7
spacers	9	4-40 x 1/2"
screws	9	4-40 x 1/4"
screws	9	4-40 x 3/8"
iso mounts	9	isolation mounts

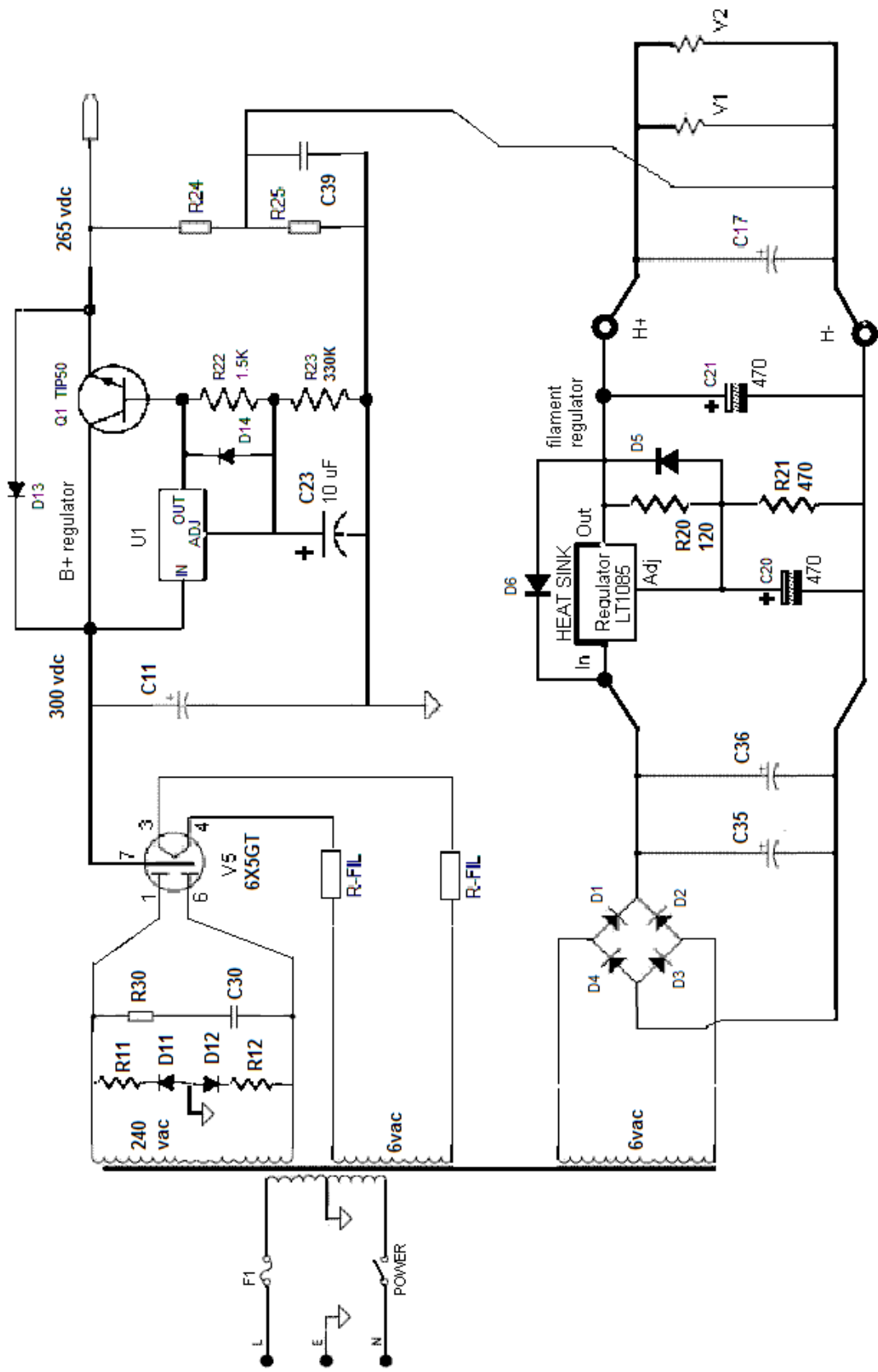


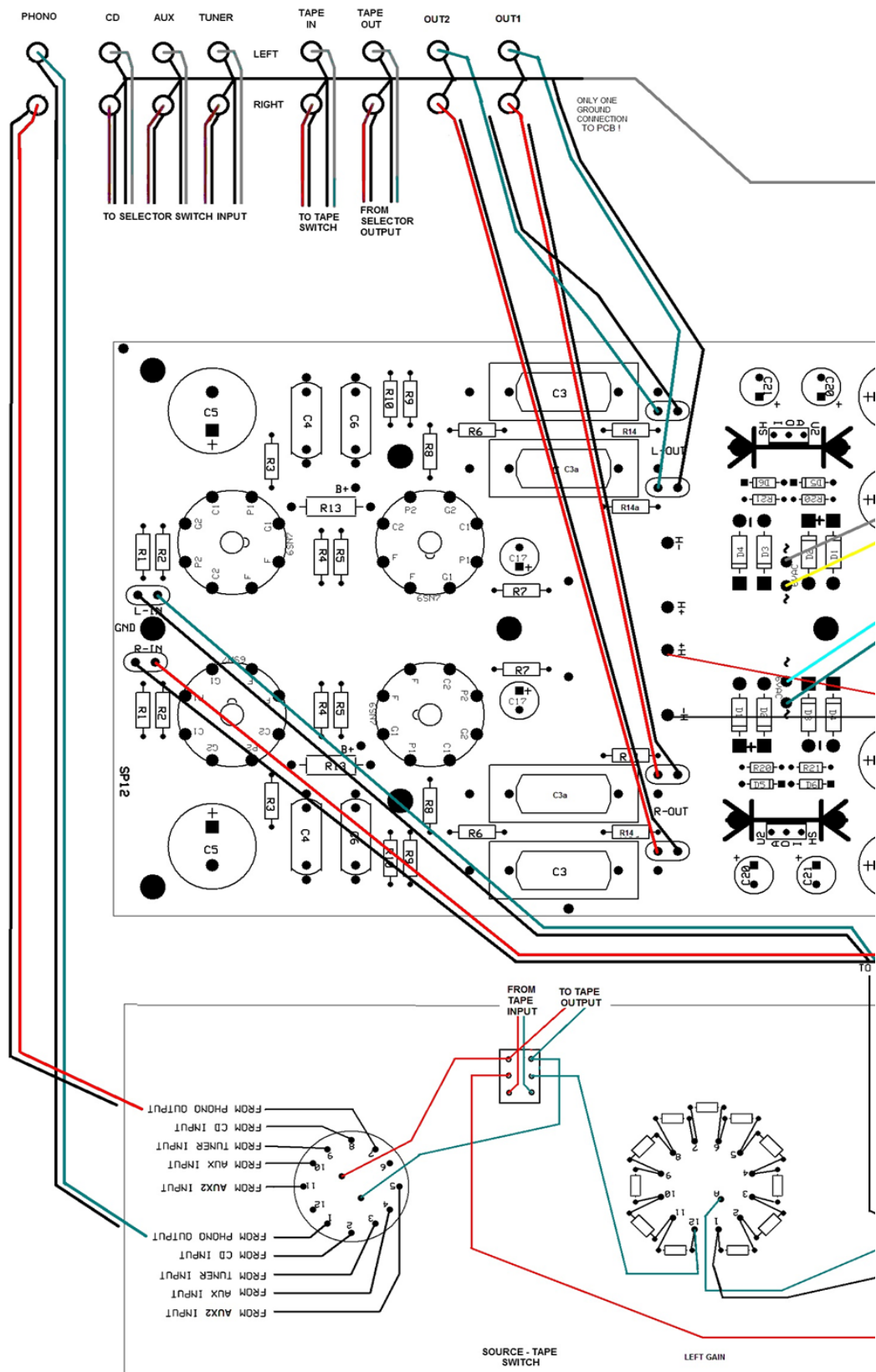
POWER: 240VAC HV
 6VAC 2A
 6VAC 2A
 6VAC 1A

9 MOUNTING HOLES

add two jumpers - one each channel - from B+ hole near D13 to B+ hole near R13







SP14 WIRING DIAGRAM
version B

