



TITLE

GENERAL ASSEMBLY 602

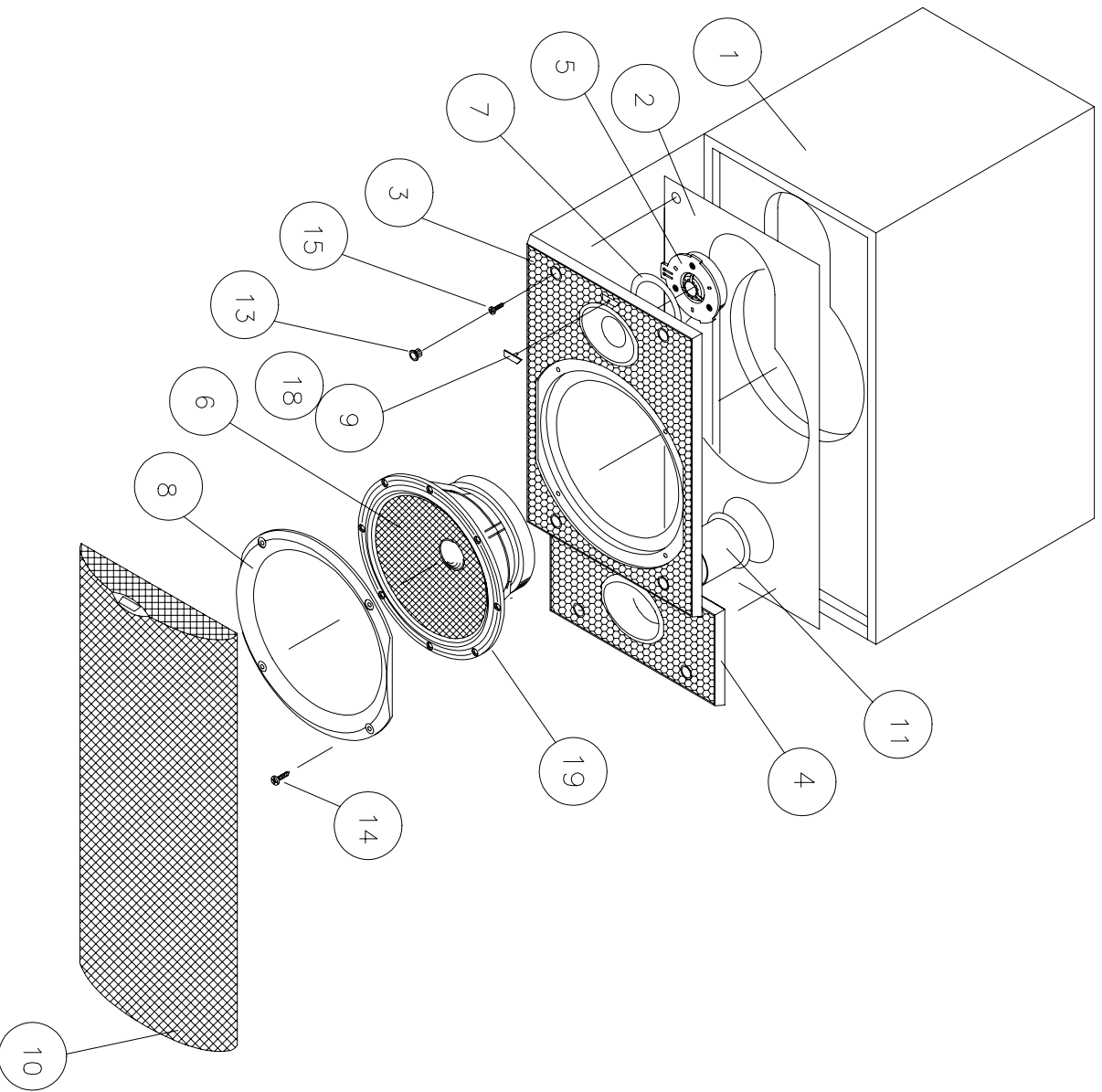
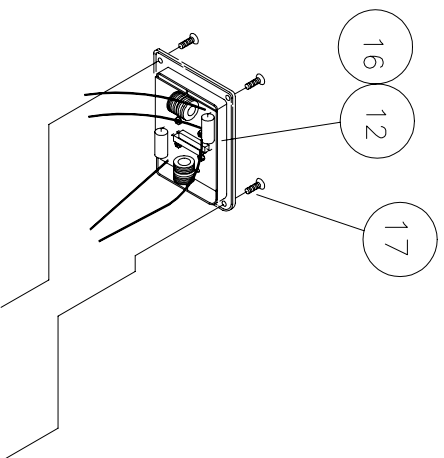
DRG. NO.

A2929-1 -2

ISS

1

COPYRIGHT © 1995 DATE 01/02/95 DRAWN KW





TITLE

602 GENERAL ASSEMBLY P/L

DRG. NO.

A2929-2 -2

ISS

2

COPYRIGHT © 1995

DATE 01/02/95

DRAWN KW

ITEM	QTY	Code No	DESCRIPTION	Drg No
		DM602-B	Complete ass'y	A2929
1	1	Y10014	Cabinet	A2916
2	1	G5355	Baffle sealing gasket	A2940
3	1	B1376	Top baffle moulding	C2902
4	1	B1392	Lower baffle moulding	C2903
5	1	ZZ10111	Tweeter ass'y	A2923
6	1	ZZ10129	Bass/Mid unit assembly	A2947
7	1	G5363	Tweeter Gasket	A2938
8	1	R5207	Clamping ring (bass)	B2911
9	1	B4243	Logo without spigot	A2924
10	1	ZG0434	Grille ass'y + Logo	C2963
11	1	P7676	Port tube	
12	1	ZZ10094	Terminal tray/X-over ass'y	A2958
13	6	G2208	Baffle grommet	
14	4	H9741	Screw	A3074
15	8	H0019	Screw	
16	1	S6416	Serial label	
17	4	H2062	Screw	
18	1	P3530	Double sided adhesive pad	
19	1	G0574	Bass Unit Gasket	A1898



TITLE

TWEETER ASSEMBLY

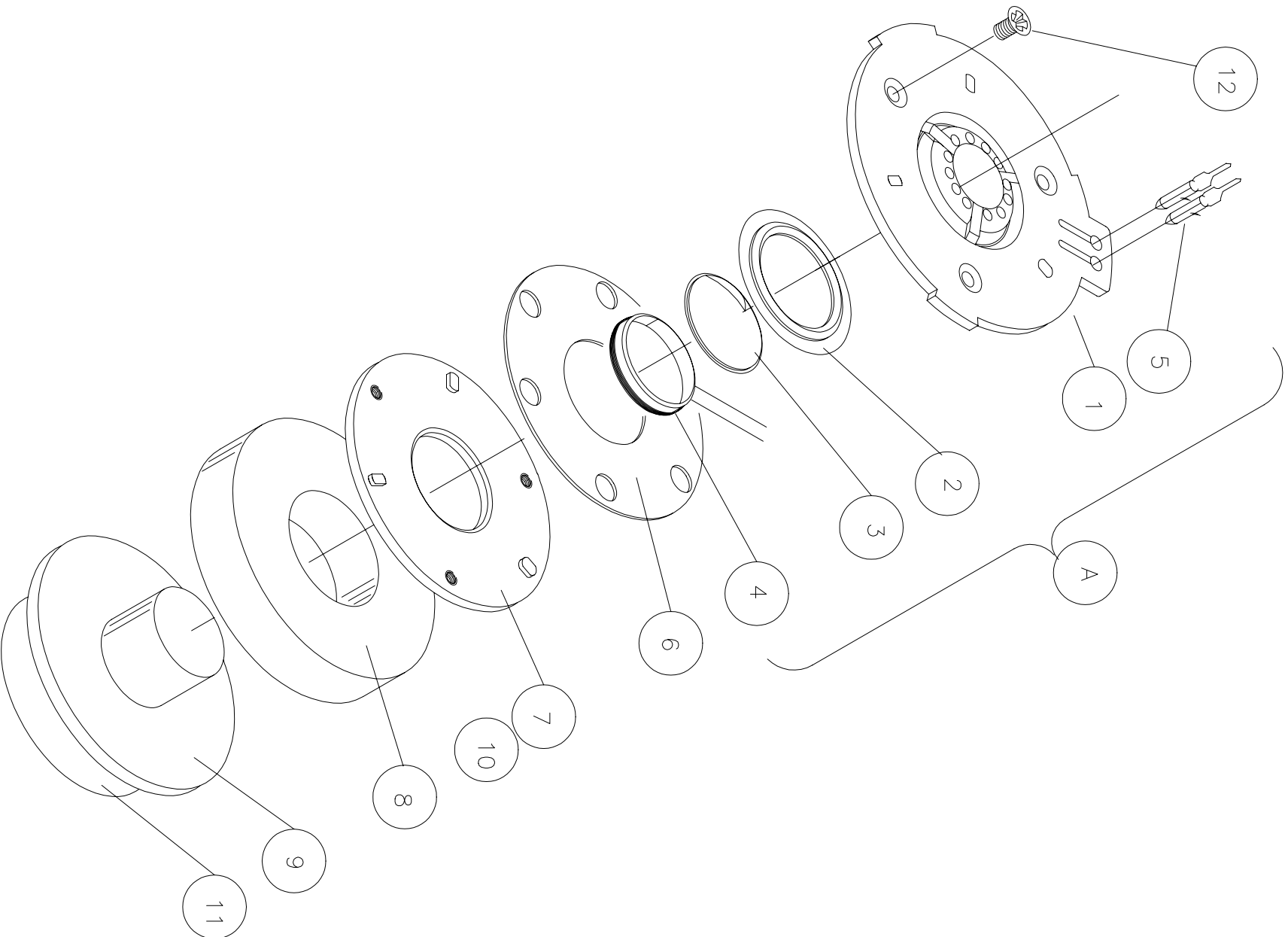
DRG. NO.

A2923-1 -2

ISS

3

COPYRIGHT © 1995 DATE 10/01/95 DRAWN KW





TITLE

TWEETER ASSEMBLY P/LIST

DRG. NO.

A 2923-2 -2

ISS

3

COPYRIGHT © 1995

DATE 10/01/95

DRAWN KW

ITEM	QTY	Code No	DESCRIPTION	REMARKS	Drg No
		ZZ10111	COMPLETE ASSEMBLY		A2923
A		ZC10111	Diaphragm mounting plate ass'y		
1	1	DD00930	Diaphragm mounting plate		B2907
2	1	SS01219	Suspension		A1292
3	1	DD01155	Dome metal		A1293
4	1	ZV00337	Coil assembly		ZV0337
5	2	PP02119	Terminal pin male solder		
6	1	GG00442	Gasket magnet to diaphragm		A1599
7	1	PP00655	Front plate		A1289
8	1	MM00051	Magnet ceramic		A1508
9	1	PP00663	Back plate/pole piece		A1290
10	1	AA05320	Ferrofluid		
11	1	LL03000	Label		A2961
12	3	HH01384	Screw	M4x6 CSK HD POZI	A2072



TITLE

KEYLAR BASS/MID UNIT ASSY

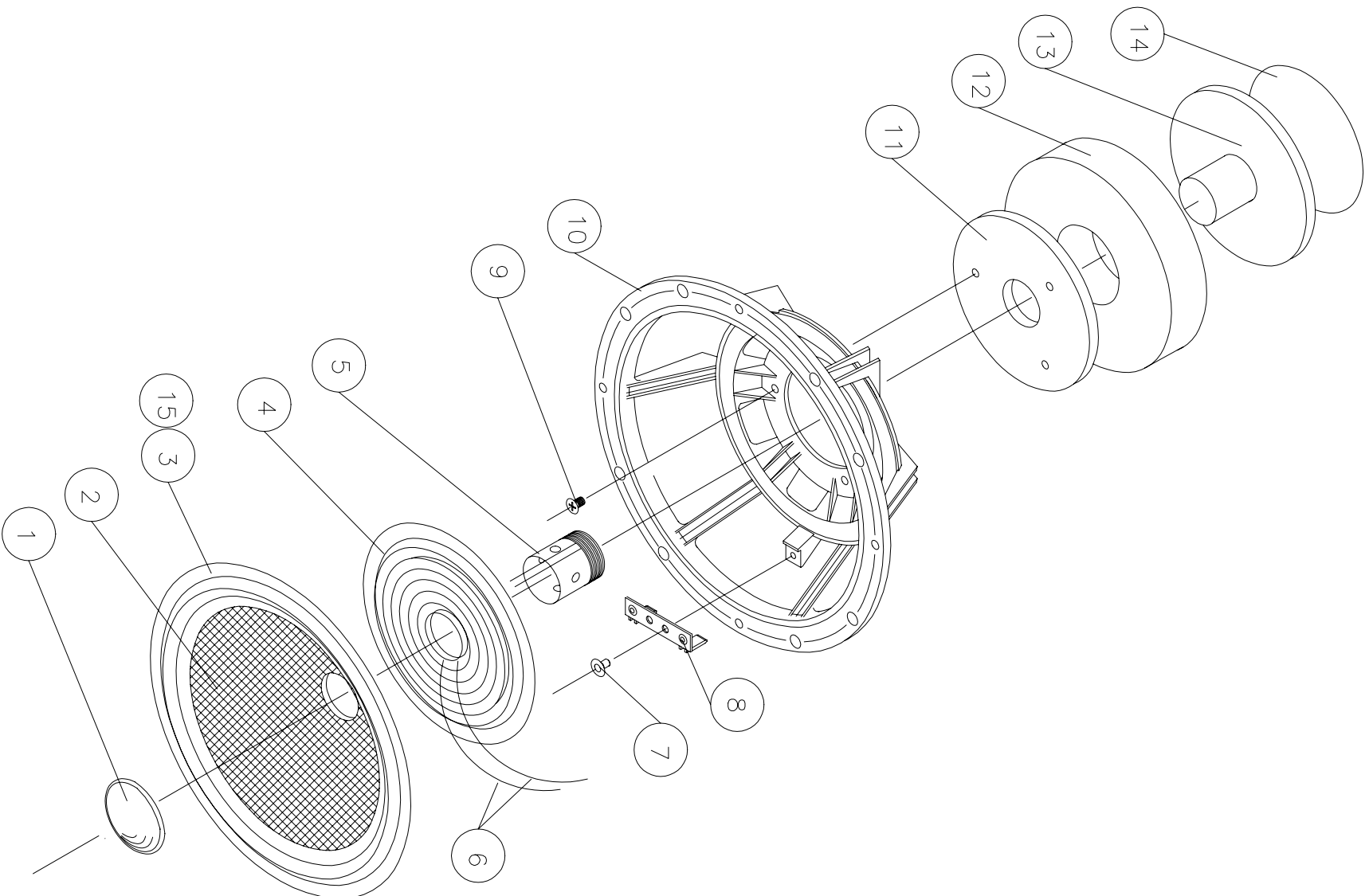
DRG. NO.

A2947-1 -2

ISS

4

COPYRIGHT © 1995 DATE 01/02/95 DRAWN KW





TITLE

KEVLAR MID/BASS UNIT P/L

DRG. NO.

A2947-2 -2

ISS

4

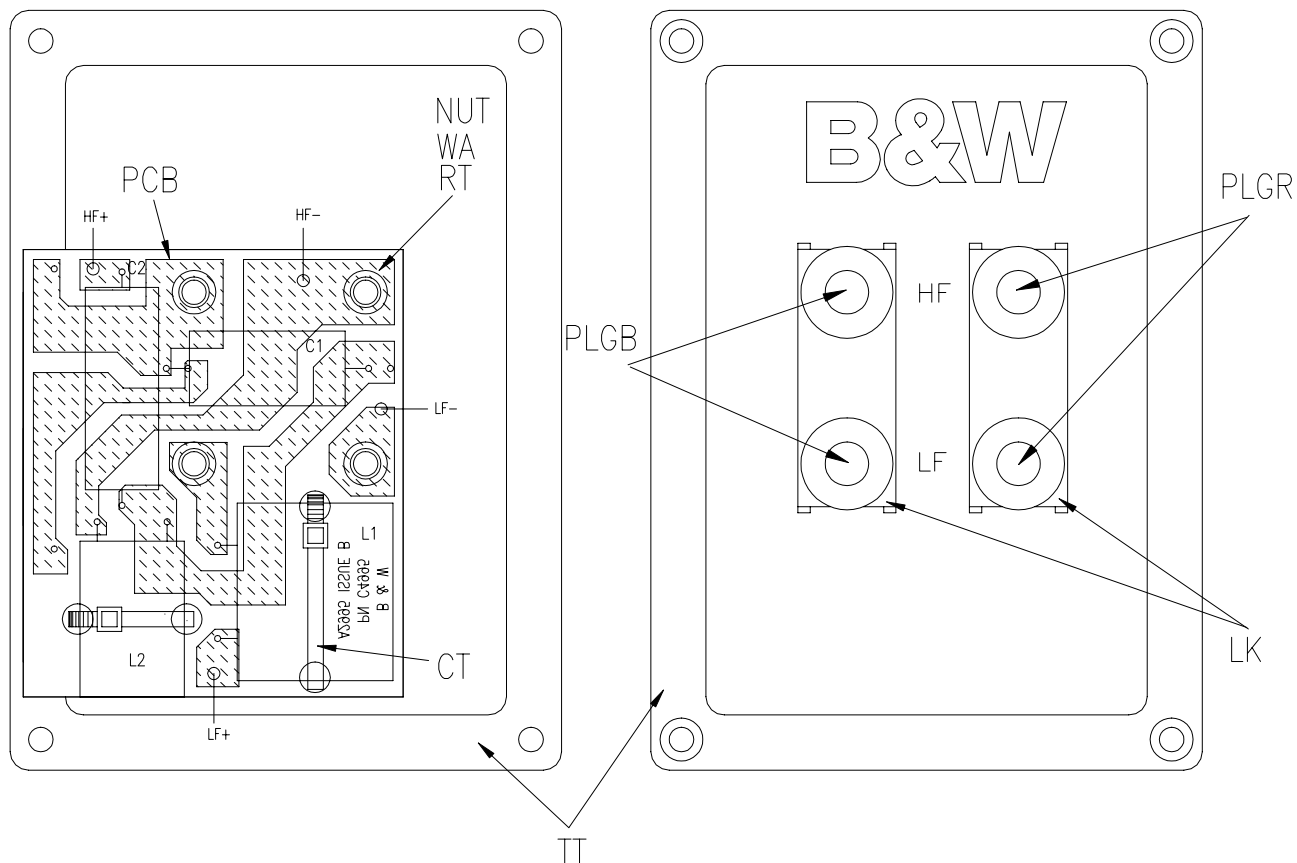
COPYRIGHT © 1995

DATE 01/02/95

DRAWN KW

Item	QTY	Code No	DESCRIPTION	REMARKS	Drg No
		ZZ10129	COMPLETE ASS'Y		A2947
		ZC10129	Cone to coil ass'y		
			Chassis ass'y		
			Magnet ass'y		
1	1	DD00205	Dust cap	ZS05630	A1915
2	1	ZM00108	Cone		A2027
3	1	SS13360	Surround		A1793
4	1	SS06394	Rear suspension		A2952
5	1	ZV00698	Coil ass'y		ZV00698
6	2	TT01767	Tinsel		
7	1	RR03972	Pop rivet		
8	1	TT00892	Tag panel		
9	3	HH01928	Screw csk hd pozi M4x8lg		
10	1	CC05665	Chassis		C1690
11	1	PP00870	Front Plate		A1770
12	1	MM01155	Magnet ceramic		A1514
13	1	PP00973	Back plate/pole piece		A1771
14	1	LL03000	Label		A2951
15	1	RR04294	Card Ring		A1892

4	SURROUND WAS SS01279	2355	SM	24/8/06
ISS	DESCRIPTON OF CHANGE	ECR #	APPROVAL	DATE



ITEM	CODE NO	COMPONENT	VALUE	REMARKS
	ZZ10094	COMPLETE ASSEMBLY		DRG NO A2958
C1	C1910	CAPACITOR	4u7	70V ELECTROLYTIC
C2	C1066	CAPACITOR	10uF	70V ELECTROLYTIC
L1	ZL1333	INDUCTOR	1.2mH	
L2	ZL1104	INDUCTOR	0.15mH	
TT	ZT0329	Term/tray assy		ZT0329/B
HAR	ZX0124	Harness assy		DRG NO A1809s3
CT	C6513	CABLE TIE		2 OFF
NUT	H4030	NUT		4 OFF M4 FULL NUT
WA	H5096	WASHER		4 OFF M4 SHAKE PROOF
LK	T2208	LINK		2 OFF DRG NO A2198 (REF TERM TRAY ASSY)
PCB	C4995/E/P	P.C.B.		PRINTED CIRCUIT BOARD DRG NO A2995
RT		EYELET		TUCKER 4.2 I/D X 4 OFF
PLGR	P1709	RED PLUG		2 OFF
PLGB	P1717	BLACK PLUG		2 OFF



TITLE

HARNESS ASSEMBLY

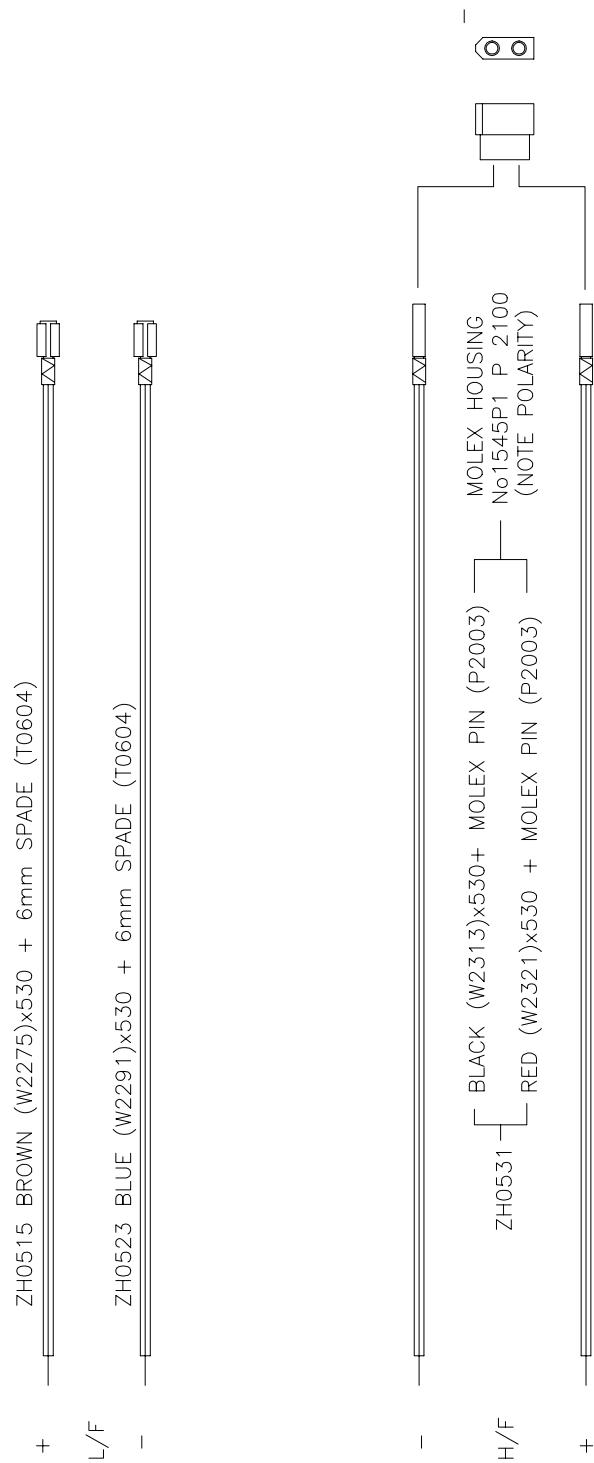
DRG. NO.

ISS

A1809-1 -1

3

COPYRIGHT © 1990 DATE 05/03/90 DRAWN JB





TITLE

DM602/603
CROSSOVER SCHEMATIC

DATE 30-3-95

© 1995

DRAWN PLB

DRG NO.

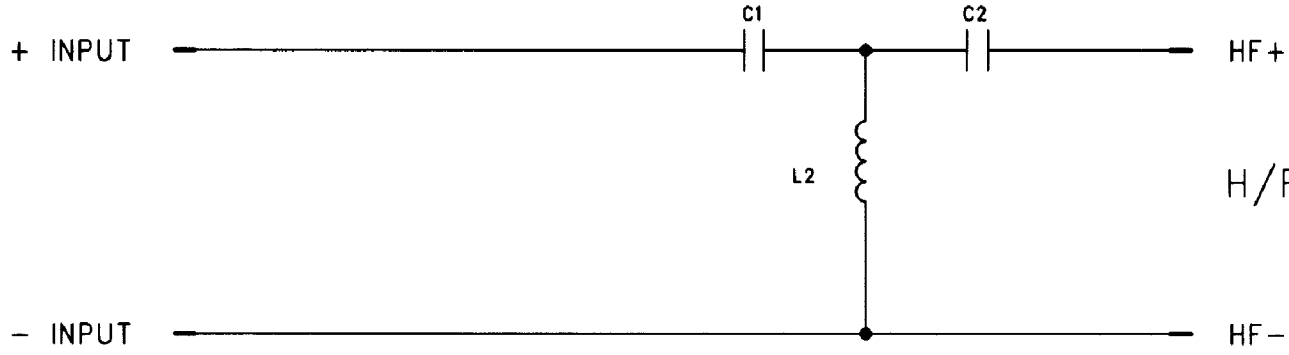
A2958S2

SHT 2 OF 2

ISSUE

1

H/F



L/F

