

Thursday, 11 August 2022

DIY Power Supply Assessment 1 Check

Subject: Checking 1st setup of DIY Power Supply, +/-24V expected output

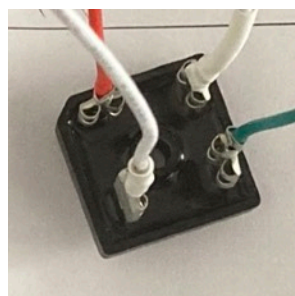
- Transformer Inputs 2*115V, 0 ground, Outputs 2*18V.



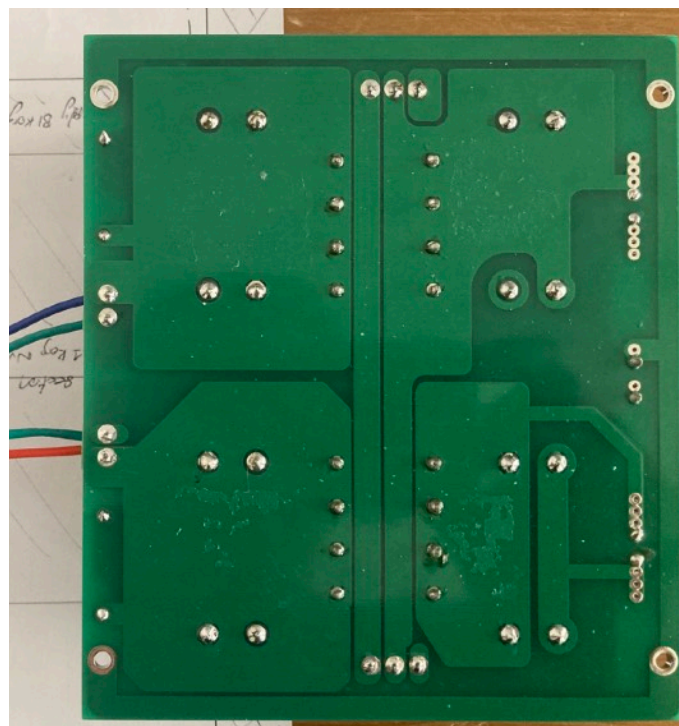
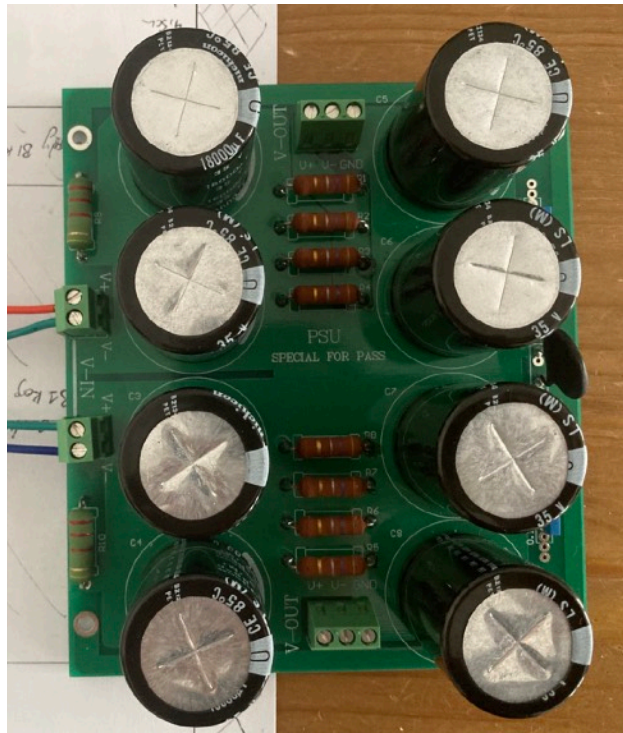
- Thermistor CL60



- Bridge rectifiers



- Non DIY Audio Store Filter Bank, more similar to old 2005 schematics (DIY Audio store PCB not for sale at the time i was ordering/preparing everything)



- My understanding of those connections, compared to would-be schematics

