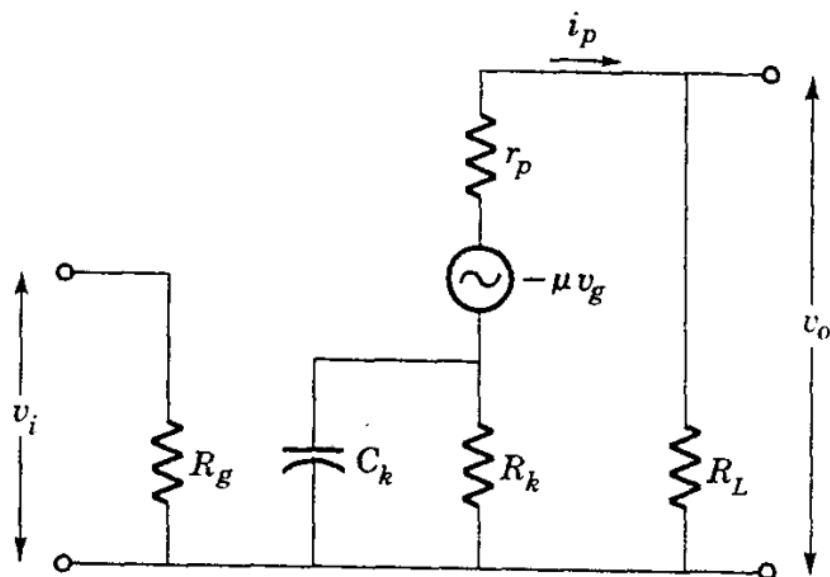


Fig. 12.12. Attenuation characteristics for selected values of cathode by-pass condenser with valve type 6J7 and $E_{bb} = 250$ volts, $R_L = 0.25$, $R_g = 0.5$, $R_s = 1.5$ megohms, $R_k = 2000$ ohms : screen adequately by-passed.



$$Z_k = \frac{R_k}{1 + jR_k\omega C_k}$$

$$a = \mu \frac{R_L}{r_p + R_L + (1 + \mu)Z_k}$$