

DITTON 332

TECHNICAL SPECIFICATION

IMPEDANCE
8 ohms nominal

OVERALL FREQUENCY RESPONSE
50 Hz to 20 kHz ± 3 dB into 2π steradians (half space)

SENSITIVITY
2.8 watts pink noise input produce 90 dB
SPL at 1 metre on axis in an anechoic environment

CROSSOVER FREQUENCIES
0.6 kHz; 4.5 kHz

POWER RATING
Maximum Rated Power 100 watts
Programme. (See Foreword)
Continuous Sine Wave Rating
14 volts rms 20 Hz-600 Hz
11 volts rms 600 Hz-4.5 kHz
9 volts rms 4.5 kHz-20 kHz

SINE WAVE SWEEP TEST
6 volts at 1 kHz. See Testing. Page 4

OVERALL DIMENSIONS
Height 650 mm, width 356 mm, depth 285 mm

INTERNAL VOLUME
Bass 39.2 litres
MF box 4 litres

WEIGHTS
Packed: 38kg per pair
Unpacked: 17 kg each

SPEAKER TYPE T NUMBERS

T.3253	American Walnut	RH
T.3254	American Walnut	LH
T.3255	Elm	RH
T.3256	Elm	LH
T.3257	Black Ash	RH
T.3258	Black Ash	LH

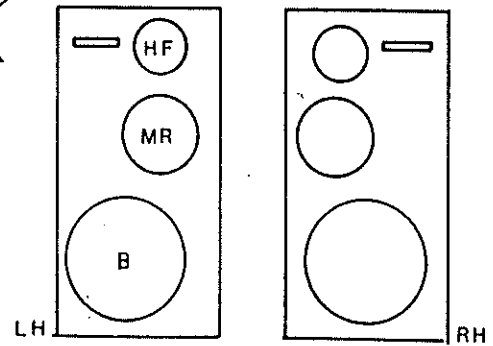
Cabinet Only

RH	American Walnut	SA5931
LH	American Walnut	SA5932
RH	Elm	SA5933
LH	Elm	SA5934
RH	Black Ash	SA5935
LH	Black Ash	SA5936

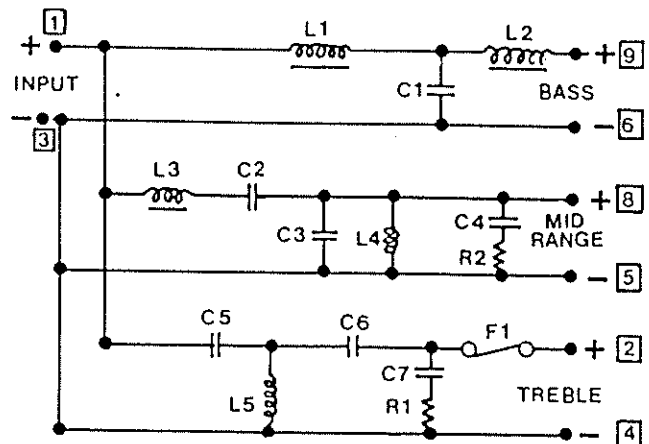
Grille

American Walnut/Elm	SA5945
Black Ash	SA5946

*Pushed
Hz.*



OUTLINE DIAGRAM



CROSSOVER CIRCUIT DIAGRAM



Printed circuit board edge connections

Fastex Anchor	Stainless Steel Badge
Fastex Anchor	Stainless Steel Badge
Fastex Anchor	Stainless Steel Badge
Fastex Anchor	Stainless Steel Badge
Fastex Anchor	Stainless Steel Badge
Fastex Anchor	Stainless Steel Badge

