

## Technical Specifications

Acoustic cabinet:

SB18

Description:

Refuerzo de graves de 18"

Power AES:

1.200 W.

Power Program:

2.400 W.

Sensitivity 2,83v @ 1m:

101 dB.

Max. SPL continuous:

132 dB.

Max. SPL peak:

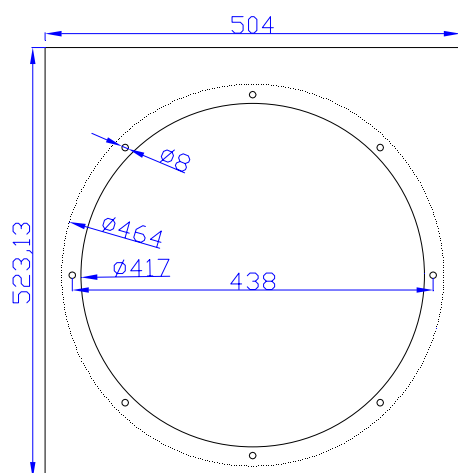
138 dB.

Frequency response:

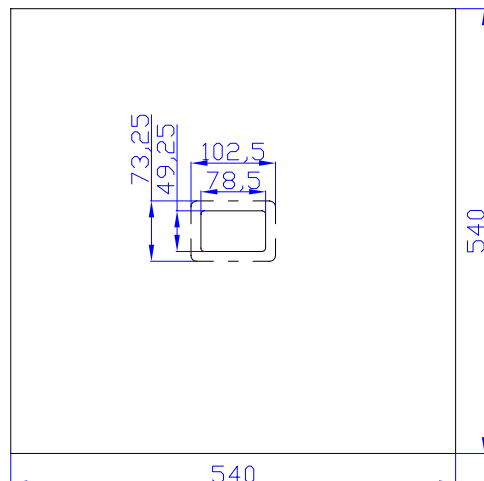
33 - 200 Hz

Bass Loudspeakers:

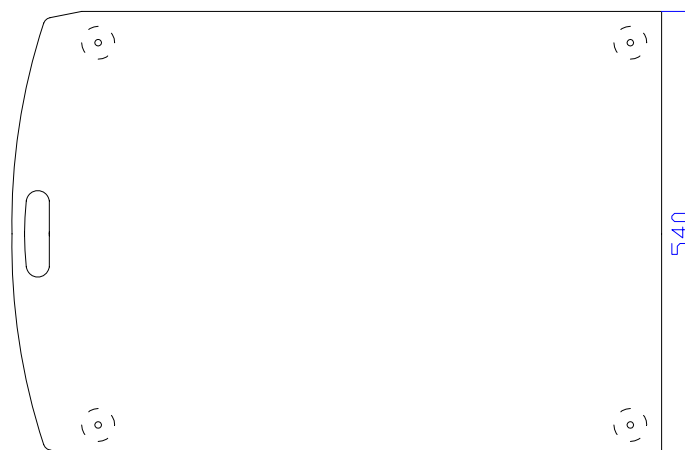
18P1200ND



**Rear**



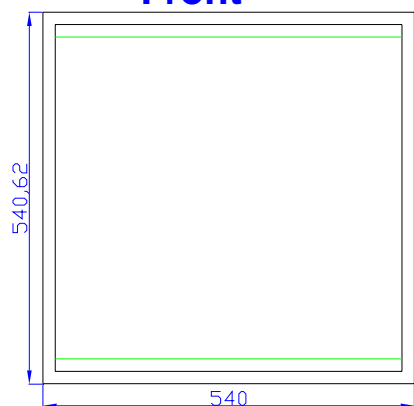
**Base**



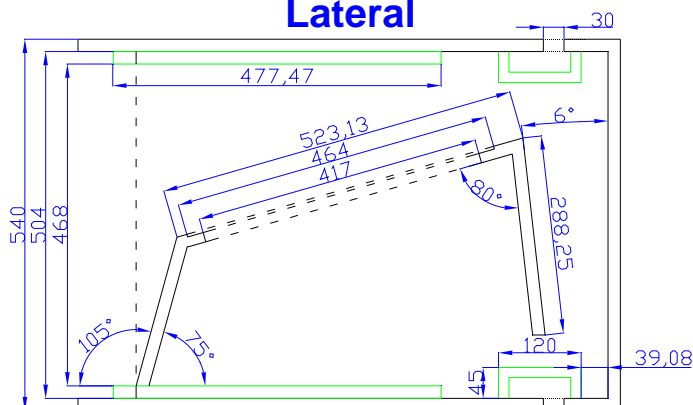
**Lateral**



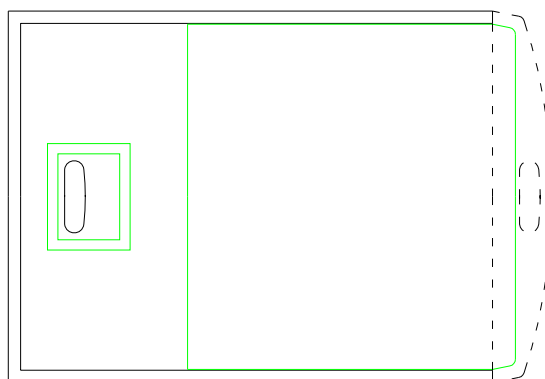
**Front**



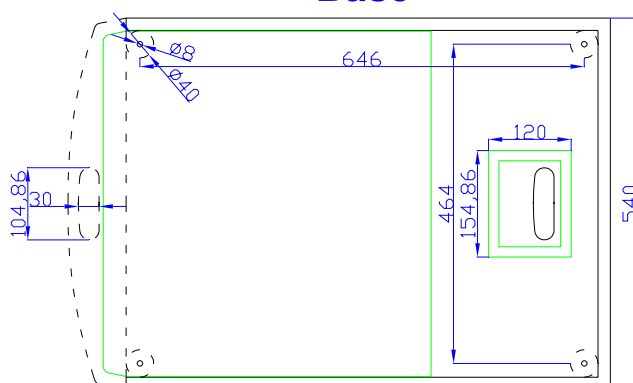
**Lateral**



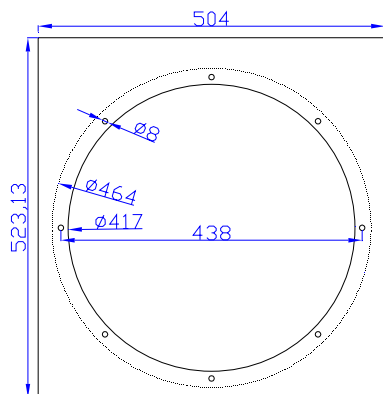
**Cental**



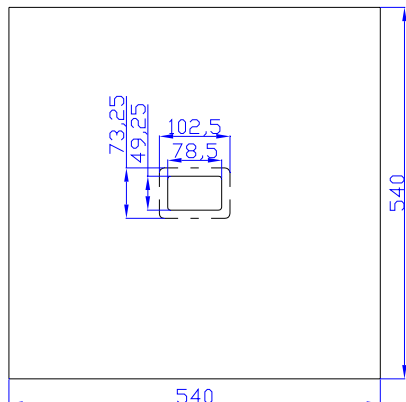
**Base**



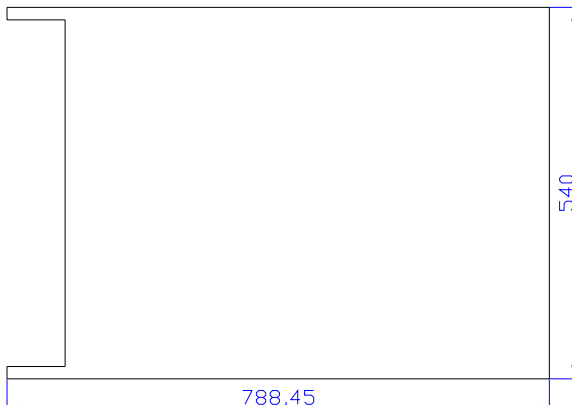
**Base**



**Rear**



**Lateral**



### 18P1200Nd

#### KEY FEATURES

- Real 1200 W AES power handling
- Sensitivity: 98 dB @ 2.83V
- 4" Duo Technology voice coil
- Forced air convection circuit for low power compression
- Extended controlled displacement:  $X_{max} \pm 9.5$  mm.
- Massive mechanical displacement capability: 52 mm p-p

#### TECHNICAL SPECIFICATIONS

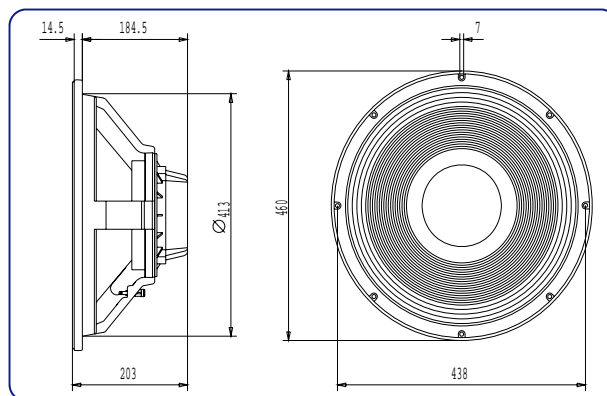
• Nominal diameter	460 mm. 18 in.
• Rated impedance	8 ohms
• Minimum impedance	6 ohms
• Power capacity*	1200 w AES
• Program power	2400 w
• Sensitivity	98 dB 2.83v @ 1m @ 2 $\pi$
• Frequency range	25 - 2000 Hz
• Voice coil diameter	100 mm. 4 in.
• Magnetic assembly weight	6 kg. 13.2 lb.
• BL factor	26.3 N / A
• Voice coil length	25 mm
• Air gap height	14 mm
• X damage (peak to peak)	52 mm

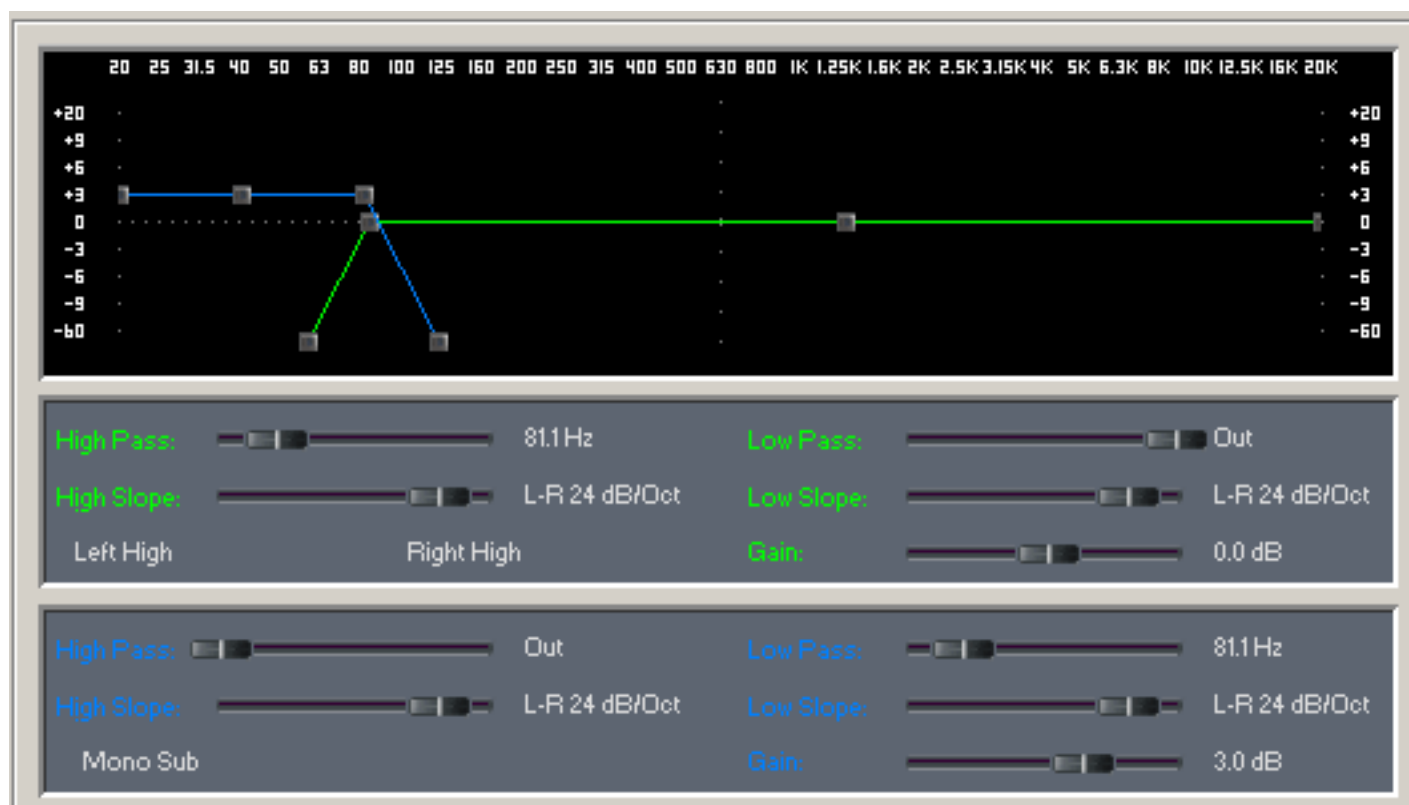
**Notes:**

\*The power capacity is determined according to AES2-1984 (r2003) standard.  
Program power is defined as the transducer's ability to handle normal music program material.



#### DIMENSION DRAWINGS





☒ Delay On

Type: 
 ☒ Seconds 
 ☐ Feet 
 ☐ Meters

Length: 
  ms

