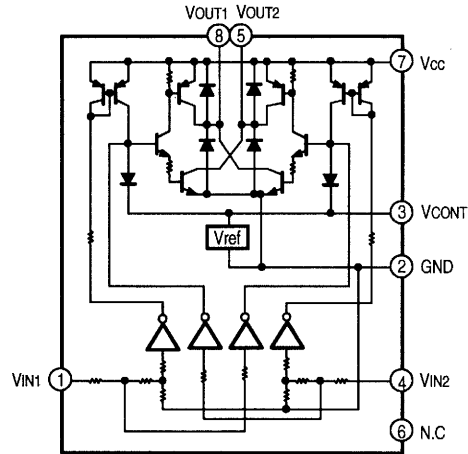
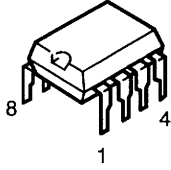
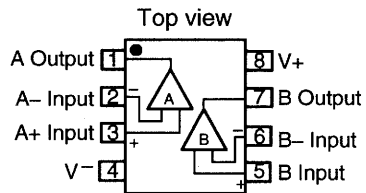
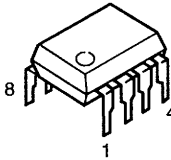
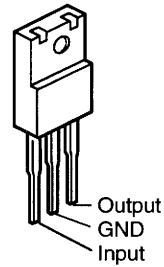
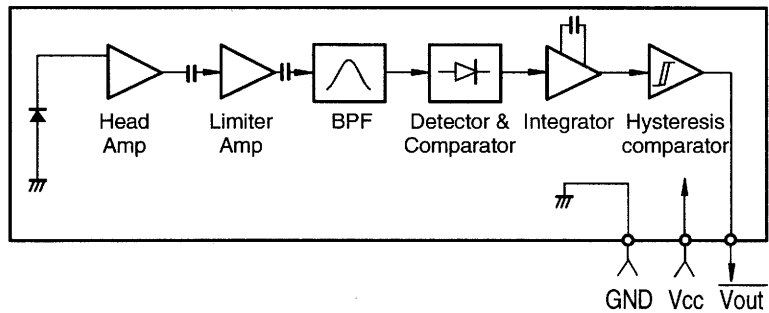
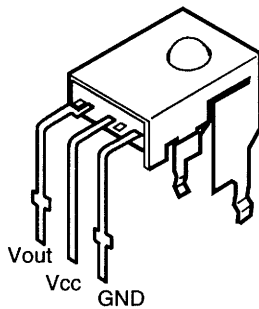
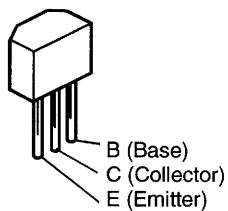


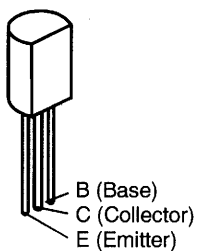
LB1639 (IC904)**NJM2068DDC (IC301)
BA15218 (IC401)****NJM7805FA (IC902)****GP1U271X (Remote Control Sensor) (IC901)**

● TRANSISTORS

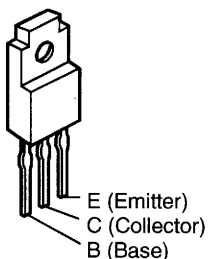
2SA1048 (GR)
2SC2458 (BL)



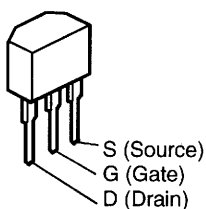
2SA988 (E/F)
2SC1815 (Y)
2SC1841 (E/F)



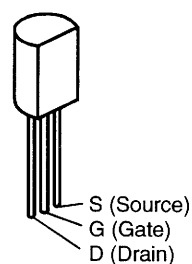
2SB1186A (D)
2SD1763A (D)



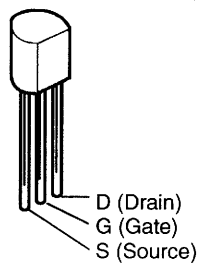
2SK184C (GR)/(BL)



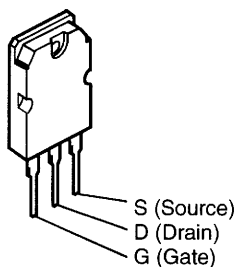
2SK369 (BL)/(GR)-C



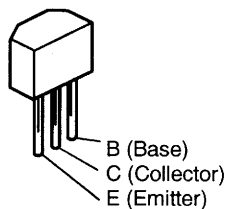
2SK373 (Y)



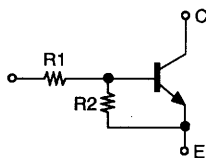
2SK851



DTC114ES
RN1241

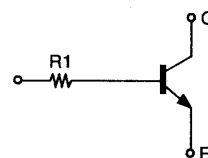


DTC114ES



| | R1 | R2 |
|----------|---------|---------|
| DTC114ES | 10 kohm | 10 kohm |

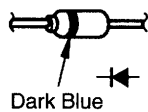
RN1241



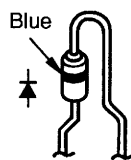
| | R1 |
|--------|----------|
| RN1241 | 5.6 kohm |

● DIODE & LED

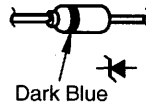
1SS252



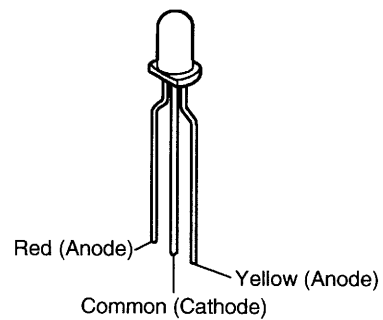
1SR35-200A



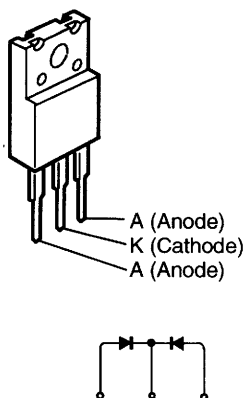
HZS5A-1
HZS12A-1
HZS6B-1
HZS24-1
MTZJ7.5C
MTZJ18A



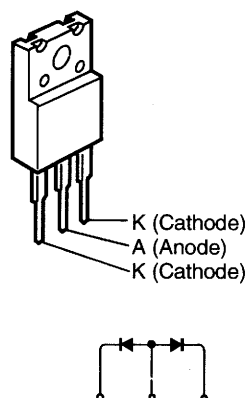
SML16751 (LED)



FMG-22S

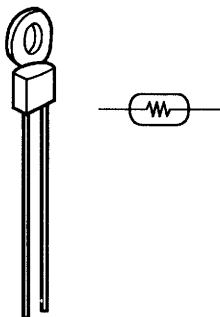
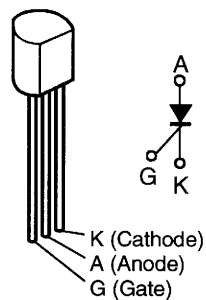


FMG-22R

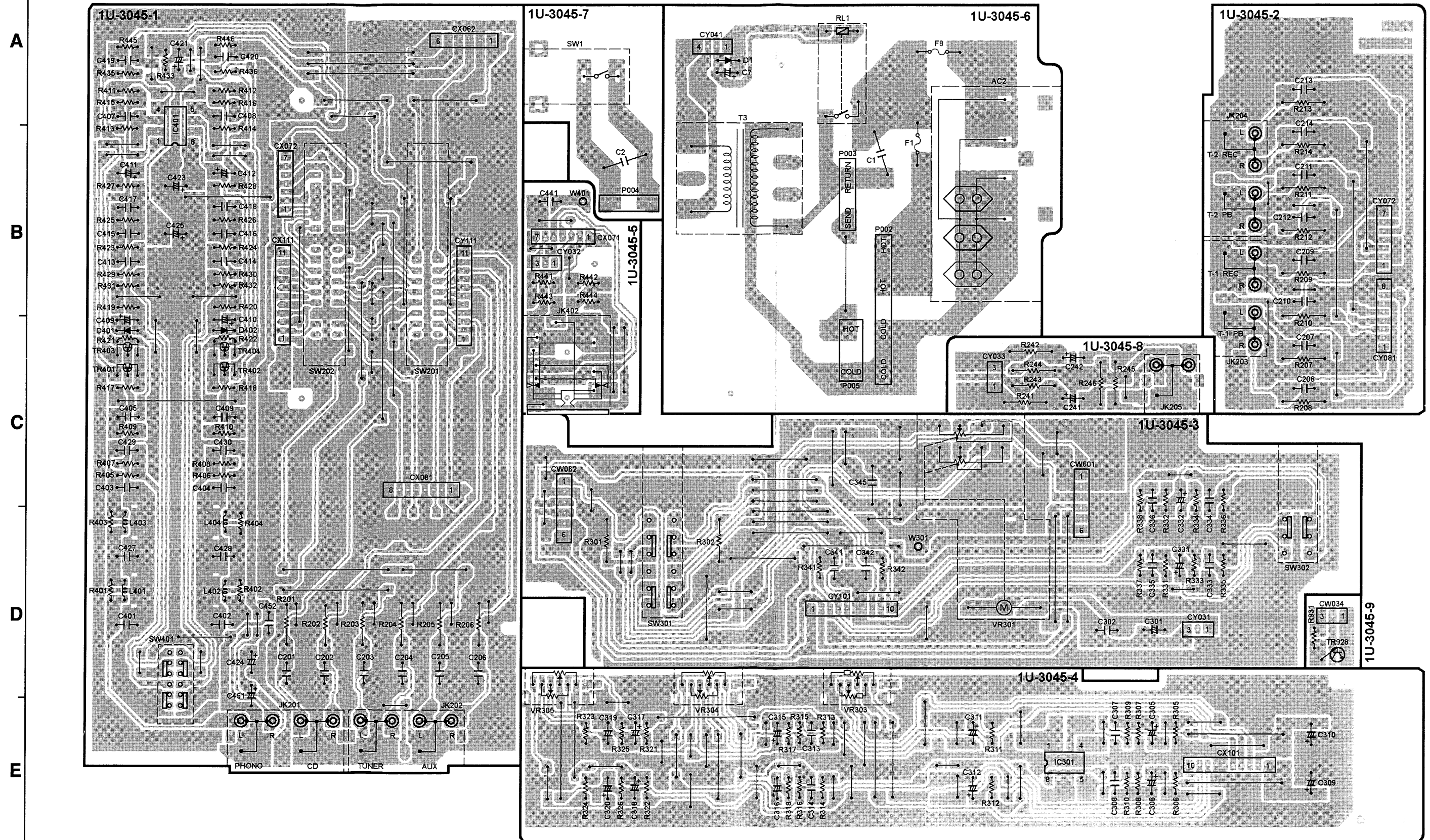


● POSISTOR

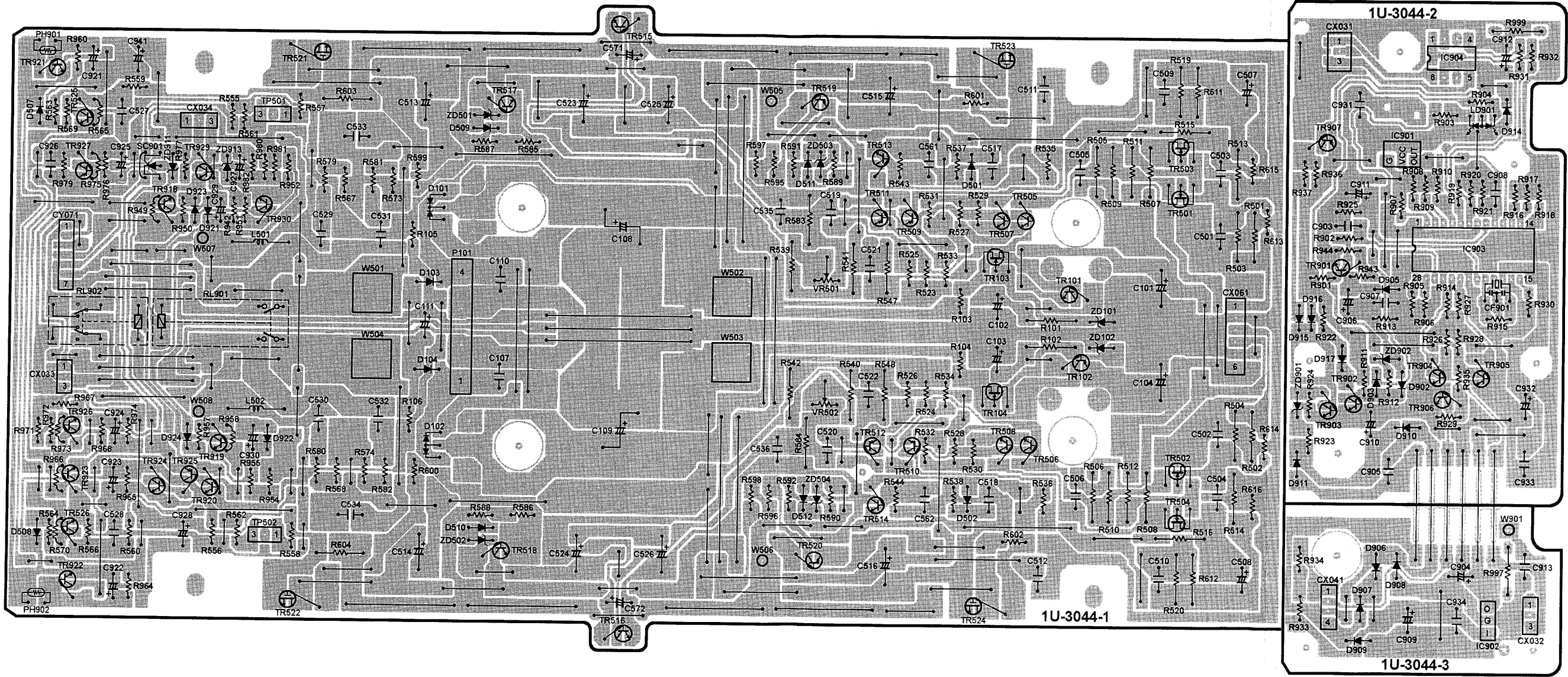
PTH9M04BC222TS2F333 (P501)

SFOR3G42 (Thyristor)
(SC601)

1U-3045B&C PHONO UNIT



1U-3044B MAIN UNIT



A

B

C

D

E

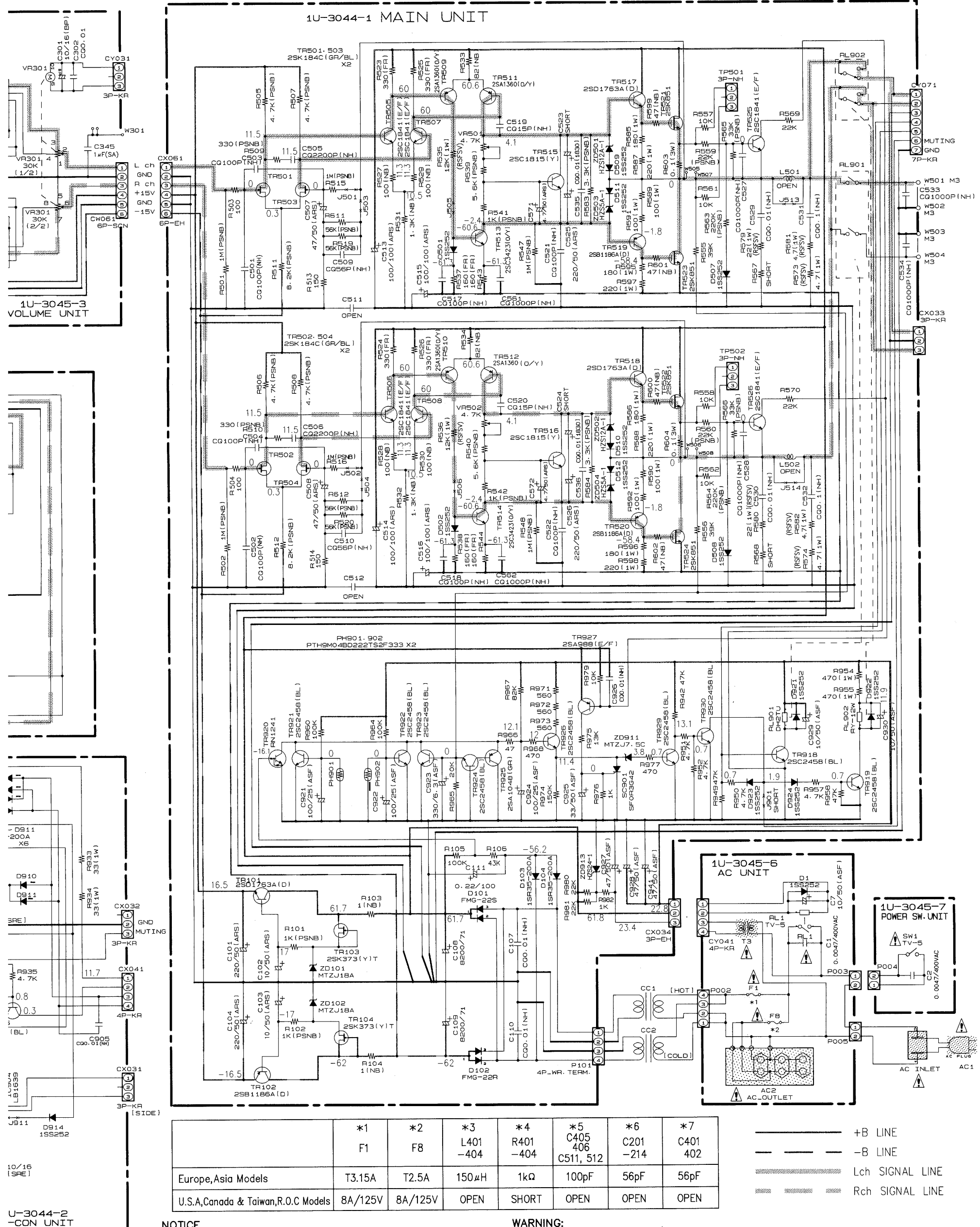
7

8

9

10

11



A

B

C

D

E

F

G

H



NOTICE
ALL RESISTANCE
ALL CAPACITANCE
EACH VOLTAGE
CONDITION.
CIRCUIT AND
NOTICE.