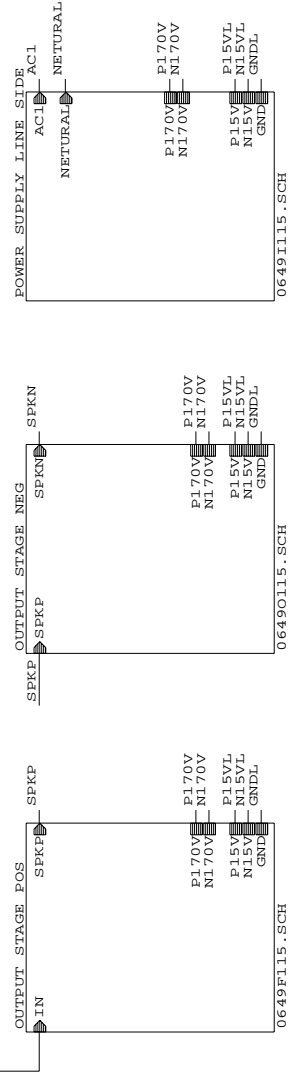
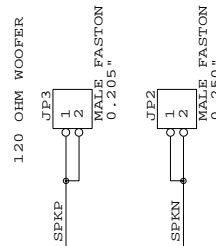
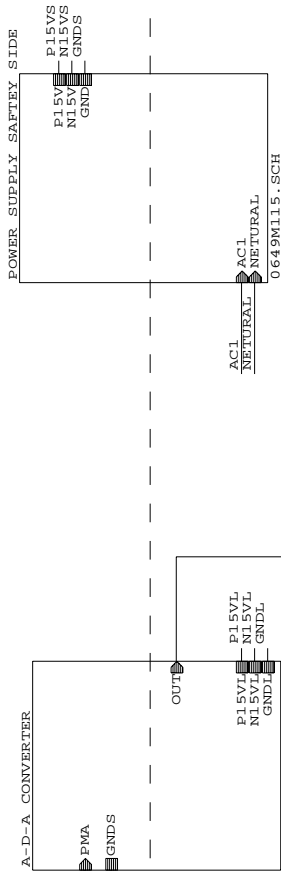
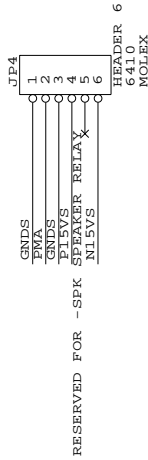


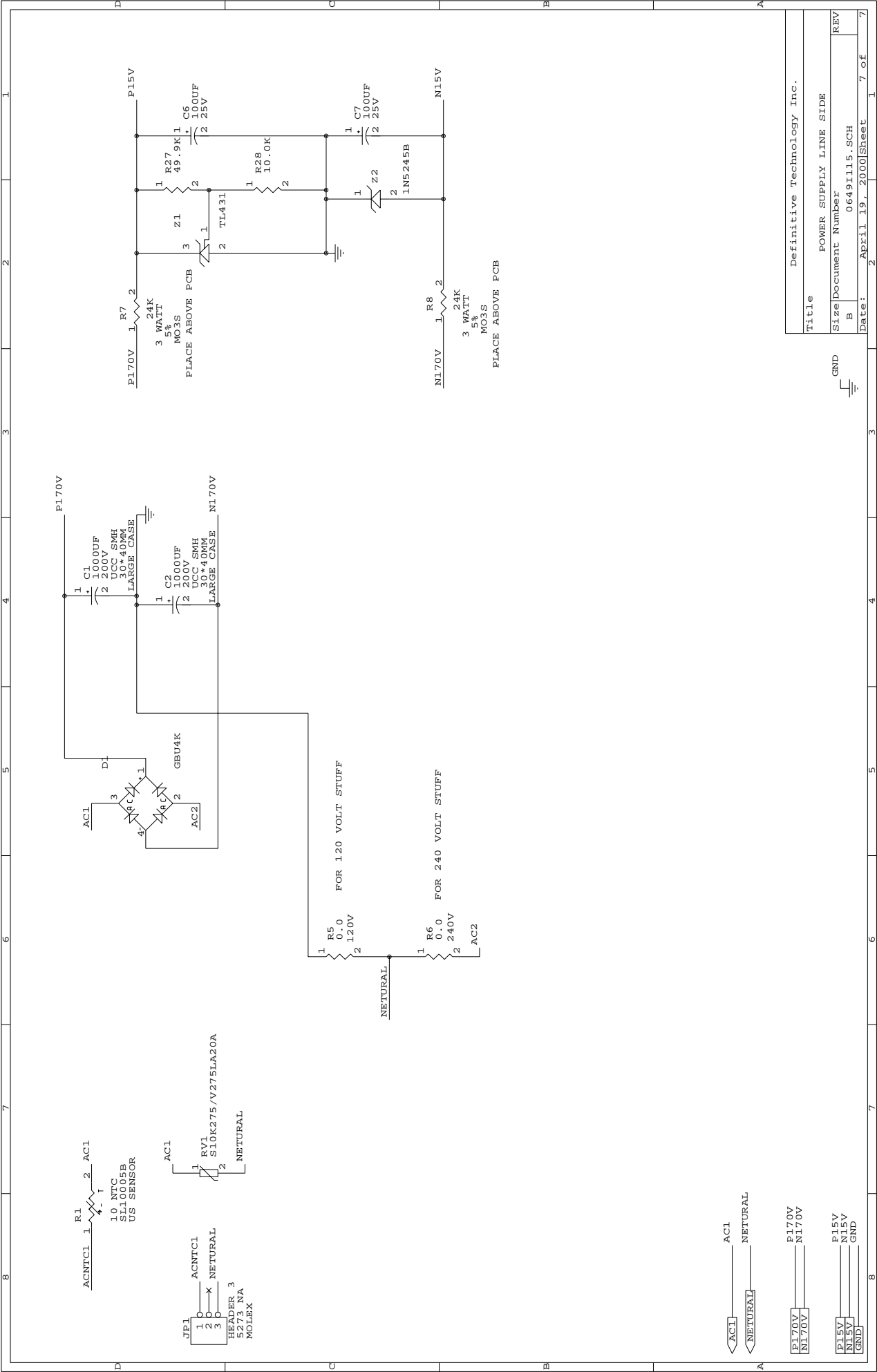
REV. HISTORY
0649K115.SCH

- M1 M5
MOUNTING HOLE
4-40 UNPLATED
- M2 M6
MOUNTING HOLE
4-40 UNPLATED
- M3 M7
MOUNTING HOLE
4-40 UNPLATED
- M4 M8
MOUNTING HOLE
4-40 UNPLATED



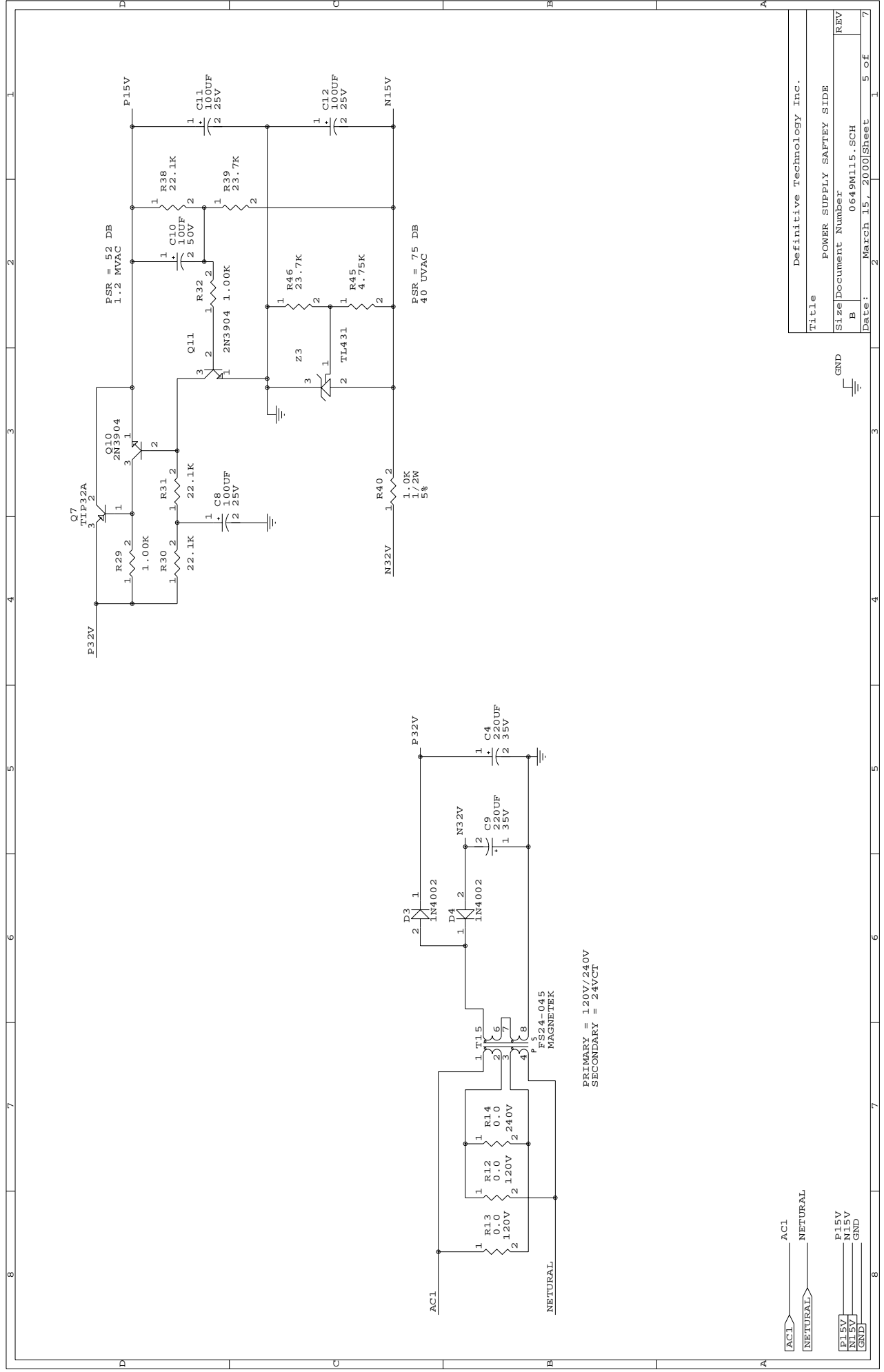
Definitive Technology Inc.	
Title	200 WATT HOT WOOFER POWER AMP
Size	Document Number
B	0649A115.SCH
REV	REV
Date:	April 19, 2000
Sheet	1 of 7

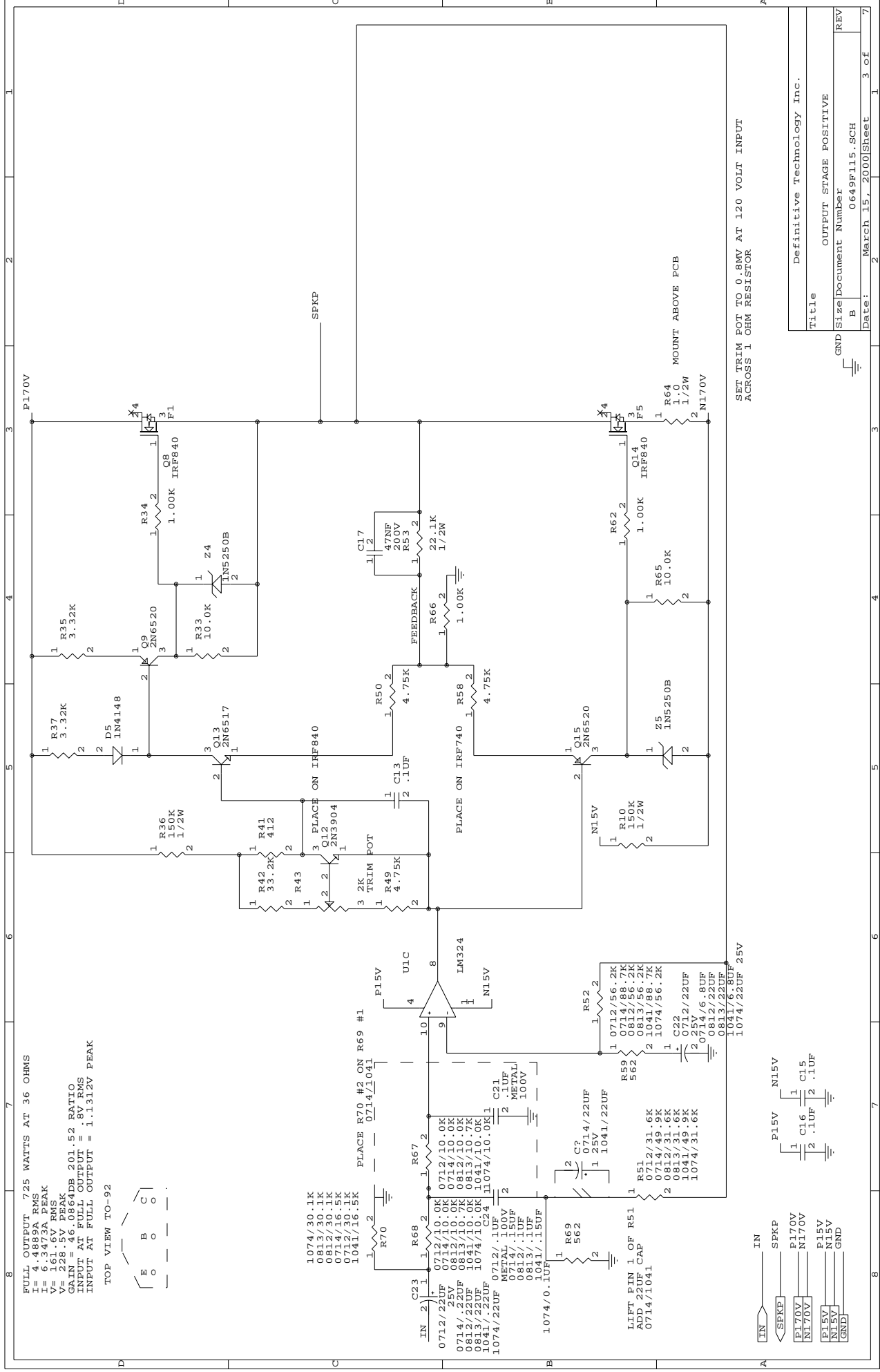
[illegible]



Definitive Technology Inc.		
Title		
POWER SUPPLY LINE SIDE		
Size	Document Number	REV
B	06491115.SCH	
Date:	April 19, 2000	Sheet 7 of 7







FULL OUTPUT 725 WATTS AT 36 OHMS
RMS
V = 161.6V RMS
V = 228.5V PEAK
GAIN = 46.0864DB 201.52 RATIO
INPUT AT FULL OUTPUT = .8V RMS
INPUT AT FULL OUTPUT = 1.1312V PEAK

TOP VIEW TO-92

Title		Definitive Technology Inc.	
Output Stage Positive		REV	
B		0649F115.SCH	
Date:		March 15, 2000	
Sheet		3 of 7	

SET TRIM POT TO 0.8MV AT 120 VOLT INPUT
ACROSS 1 OHM RESISTOR

