

1

2

3

4

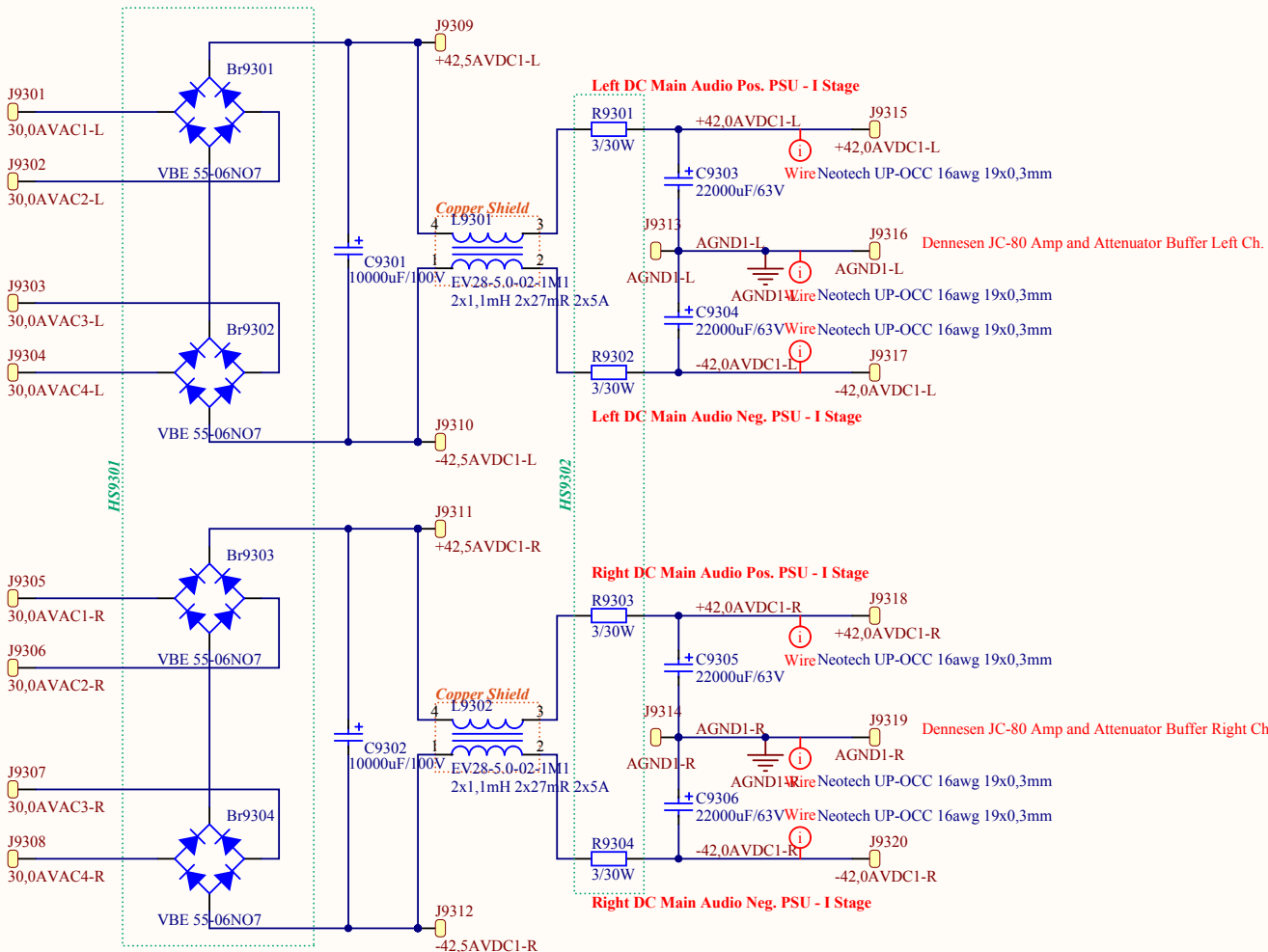
Source of Schematic:
JC-80 eBay PCBs #34 (Capacitors C9301-C9302)

Diodes:
D9301-D9304: FRED® 600V/68A 35ns
Capacitors:
C9301-C9302: Mundorf MLYtic AG
C9303-C9306: Mundorf MLYtic AG
Resistors:
R9301-R9304: Caddock MP930
CM Chokes:
L9301-L9302: EV28-5.0-02-1M1

Heatsinks:
HS9301: D9301-D9312
HS9302: R9301-R9304

Construction amendments:
- PCB: no
- Wiring: STDCT-16 Neotech UP-OCC 16awg 19x0,3mm
- Wiring: STDCT-24 Neotech UP-OCC 24awg 7/0.2mm

Component Purchasers:
D9301-D9304: Mouser
L9301-L9302: Elfa Distrelec
C9301-C9302: Audiohobby
C9303-C9306: Audiohobby
R9301-R9304: Elfa Distrelec



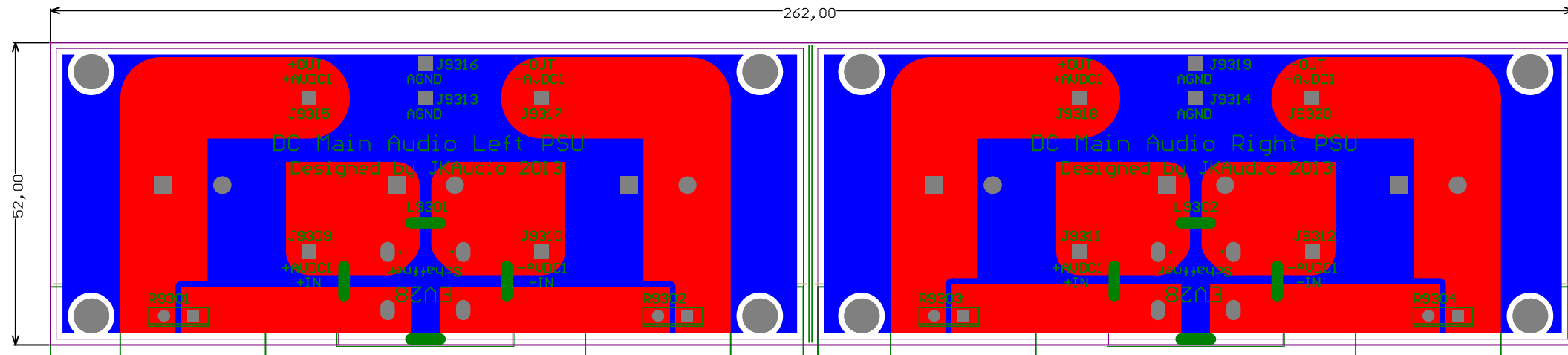
Title DC Main Audio PSU - I Stage		
Size A4	Number	Revision
Date: 2013-12-10	Sheet of	
File: C:\Users\...\DC Main Audio PSU.SchDoc	Drawn By:	

1

2

3

4



LEGEND:

PCB: 70um Cu, 2,00mm FR-4, 2x130,00mm+2,00mm x 52,00mm

Top Layer: Au-plated

Bottom Layer: Au-plated

Top Overlay: White Colour

Bottom Overlay: White Colour

Comment	Description	Designator	Footprint	LibRef	Quantity
Diode Bridge	Single Phase Rectifier Bridge	Br9301, Br9302, Br9303, Br9304		Diode Bridge	4
Capacitor	Capacitor Polarized	C9301, C9302	Cap Mundorf MLGO 35.0x50.0	Capacitor Polarized	2
Capacitor	Capacitor Polarized	C9303, C9304, C9305, C9306	Cap Mundorf MLGO 35.0x70.0	Capacitor Polarized	4
30,0AVAC1-L	Header, 1-Pin	J9301	Pad 2 2.5/1.5	Header 1	1
30,0AVAC2-L	Header, 1-Pin	J9302	Pad 2 2.5/1.5	Header 1	1
30,0AVAC3-L	Header, 1-Pin	J9303	Pad 2 2.5/1.5	Header 1	1
30,0AVAC4-L	Header, 1-Pin	J9304	Pad 2 2.5/1.5	Header 1	1
30,0AVAC1-R	Header, 1-Pin	J9305	Pad 2 2.5/1.5	Header 1	1
30,0AVAC2-R	Header, 1-Pin	J9306	Pad 2 2.5/1.5	Header 1	1
30,0AVAC3-R	Header, 1-Pin	J9307	Pad 2 2.5/1.5	Header 1	1
30,0AVAC4-R	Header, 1-Pin	J9308	Pad 2 2.5/1.5	Header 1	1
+42,5AVDC1-L	Header, 1-Pin	J9309	Pad 2 2.5/1.5	Header 1	1
-42,5AVDC1-L	Header, 1-Pin	J9310	Pad 2 2.5/1.5	Header 1	1
+42,5AVDC1-R	Header, 1-Pin	J9311	Pad 2 2.5/1.5	Header 1	1
-42,5AVDC1-R	Header, 1-Pin	J9312	Pad 2 2.5/1.5	Header 1	1
AGND1-L	Header, 1-Pin	J9313, J9316	Pad 2 2.5/1.5	Header 1	2
AGND1-R	Header, 1-Pin	J9314, J9319	Pad 2 2.5/1.5	Header 1	2
+42,0AVDC1-L	Header, 1-Pin	J9315	Pad 2 2.5/1.5	Header 1	1
-42,0AVDC1-L	Header, 1-Pin	J9317	Pad 2 2.5/1.5	Header 1	1
+42,0AVDC1-R	Header, 1-Pin	J9318	Pad 2 2.5/1.5	Header 1	1
-42,0AVDC1-R	Header, 1-Pin	J9320	Pad 2 2.5/1.5	Header 1	1
Choke 3	Double Ferrite Choke	L9301, L9302	Chokes CM EV28	Choke 3	2
Resistor	Resistor	R9301, R9302, R9303, R9304	Res Caddock TO-220 (M)	Resistor	4