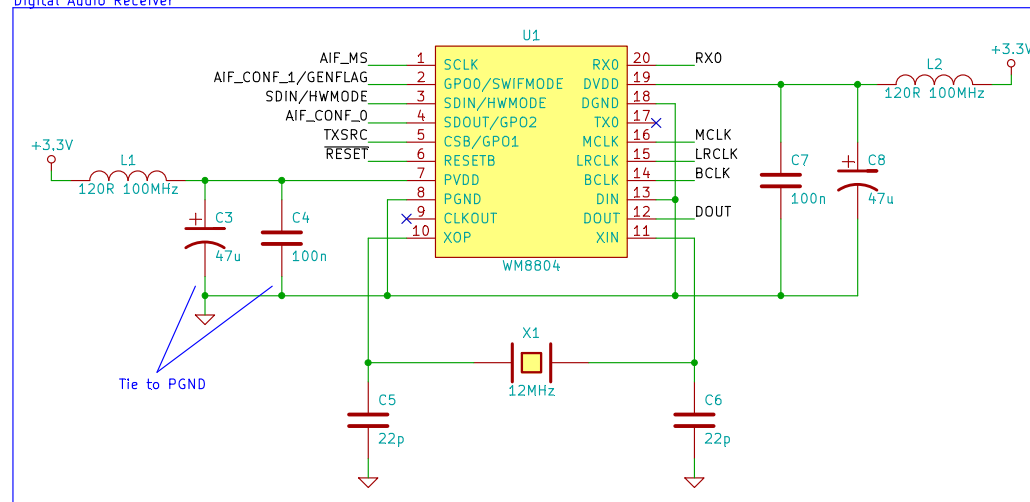
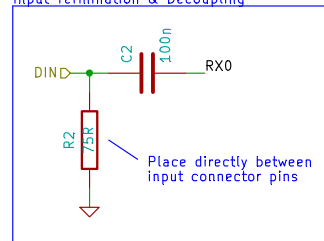


Drawn by: PS KEMP		
File:		
Sheet: /		
Title: Top		
Size: A4	Date: 23 aug 2014	Rev: Draft 3
KiCad E.D.A. eeschema (2013-03-04 BZR 3984)-stable		Id: 1/5

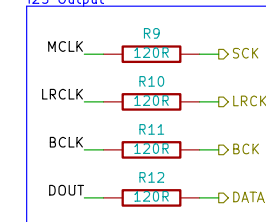
Digital Audio Receiver



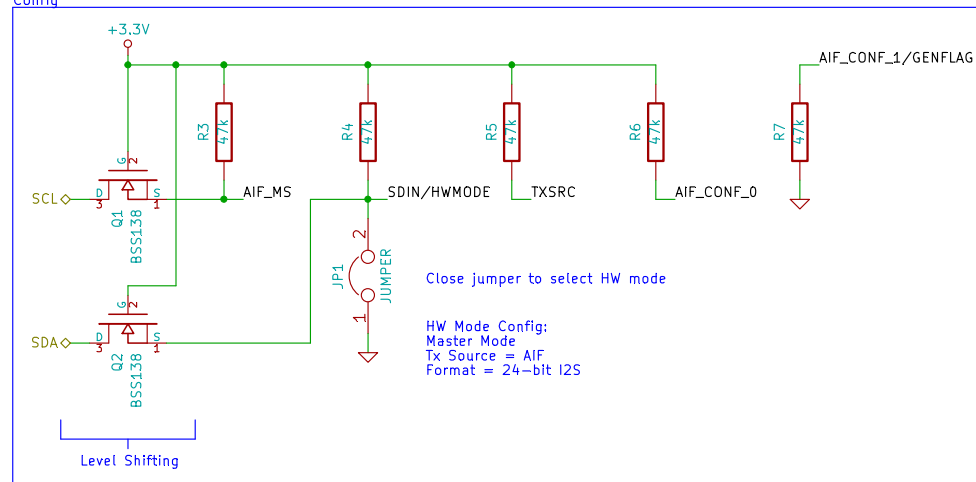
Input Termination & Decoupling



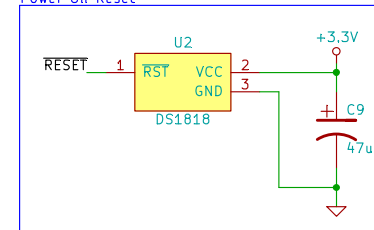
I2S Output



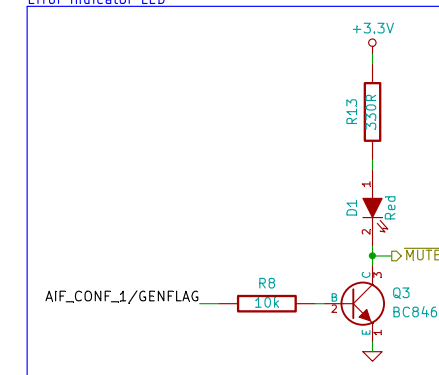
Config



Power On Reset



Error Indicator LED



NOTES:
1. A 75R resistor might be required in series with C2 if WM8804 is significant distance from Input connector
2. I2S series matching resistor values to be verified

Drawn by:

PS KEMP

File:

Sheet: /Receiver/

Title: Receiver

Size: A4

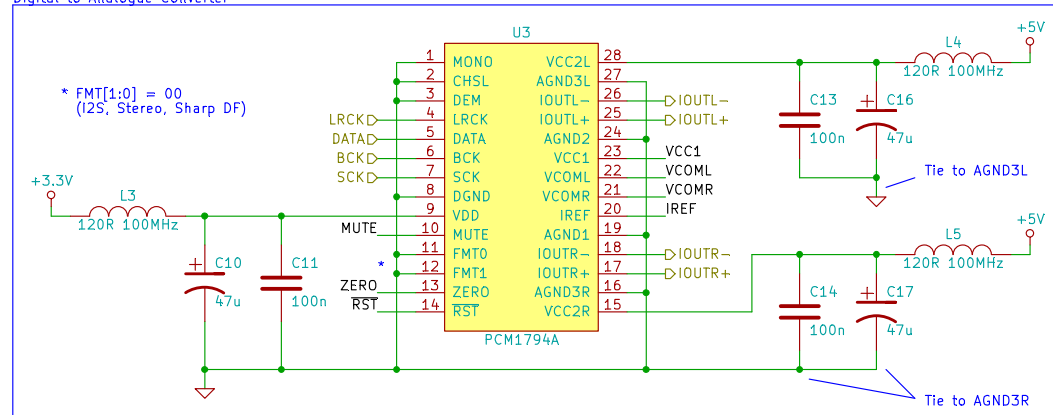
Date: 23 aug 2014

KiCad E.D.A. eeschema (2013-03-04 BZR 3984)-stable

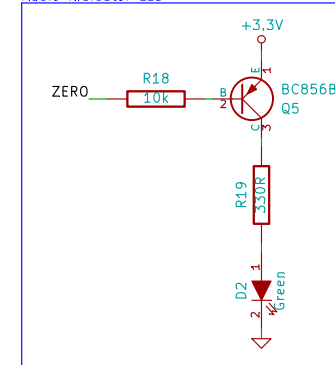
Rev: Draft 3

Id: 2/5

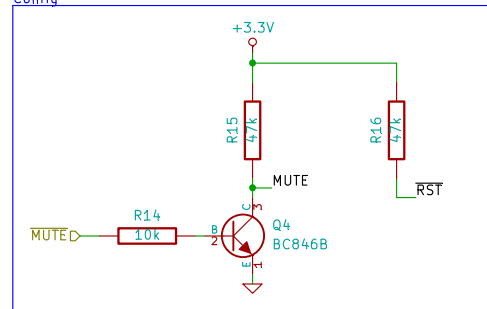
Digital to Analogue Converter



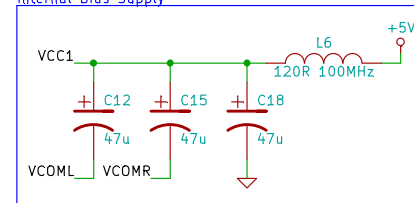
Audio Indicator LED



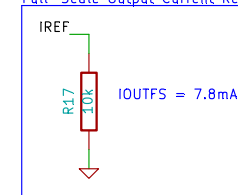
Config



Internal Bias Supply

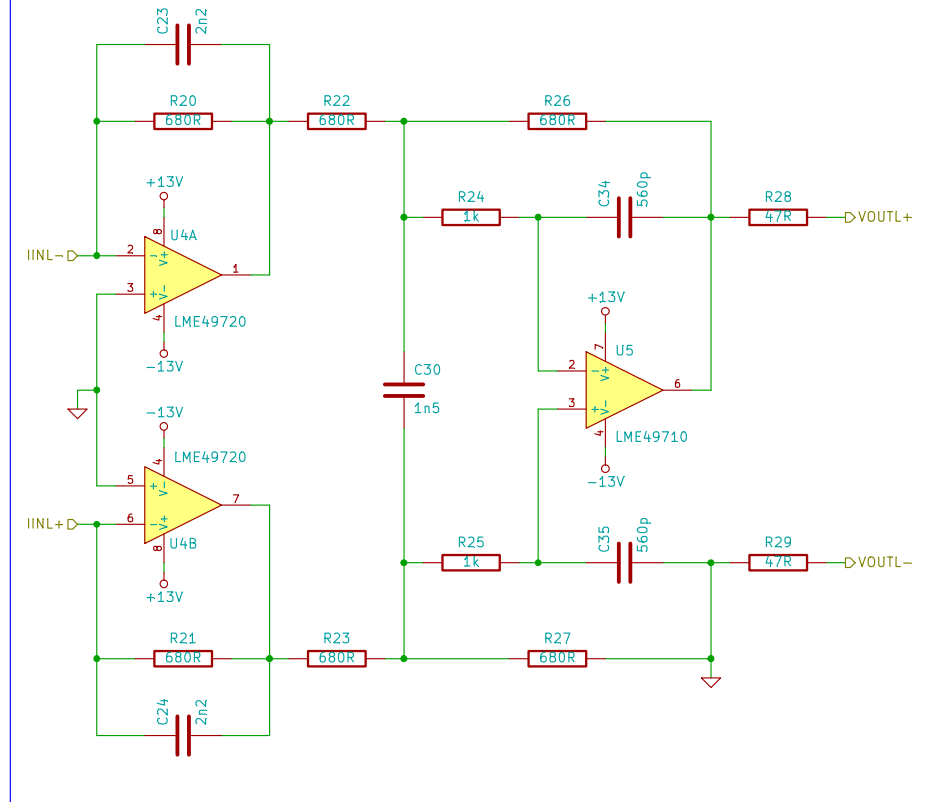


Full-Scale Output Current Ref

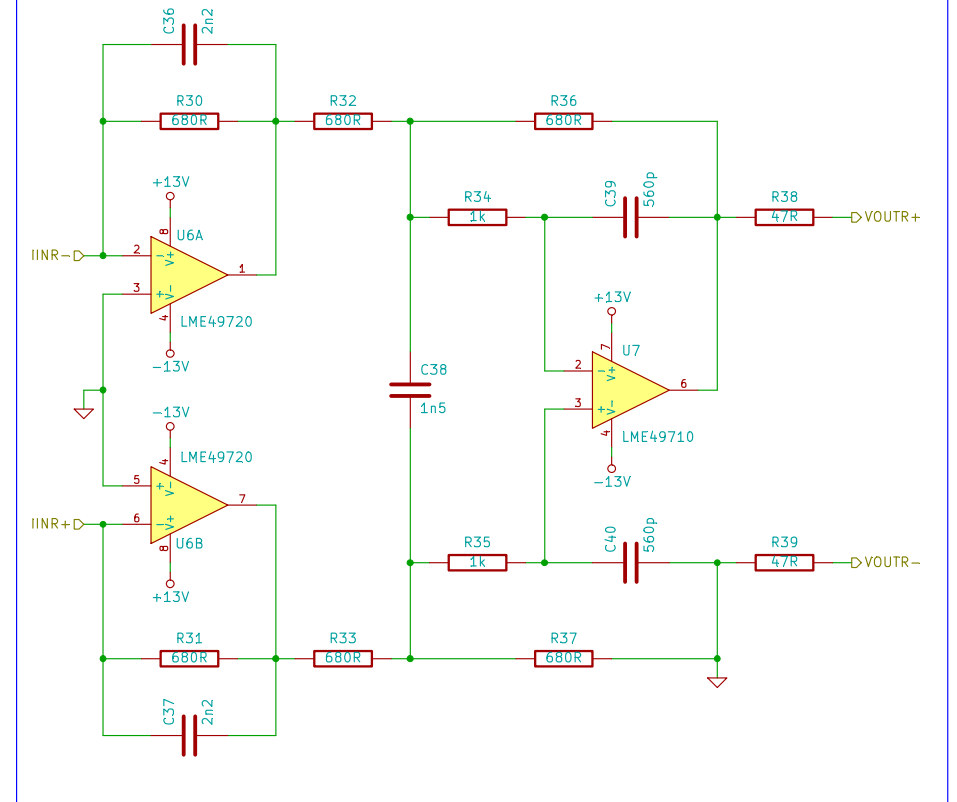


Drawn by:		
PS KEMP		
File:		
Sheet: /DAC/		
Title: DAC		
Size: A4	Date: 23 aug 2014	Rev: Draft 3
KiCad E.D.A. eeschema (2013-03-04 BZR 3984)-stable		Id: 3/5

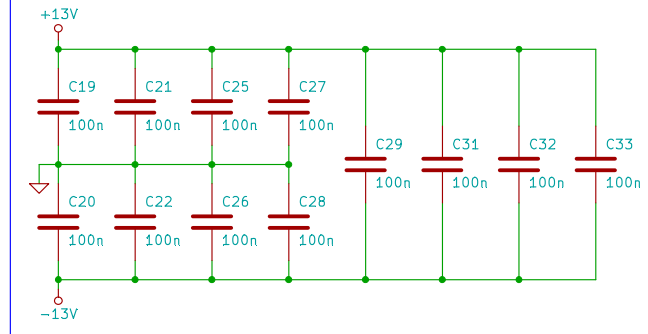
Left Channel I/V Conversion and LPF



Right Channel I/V Conversion and LPF



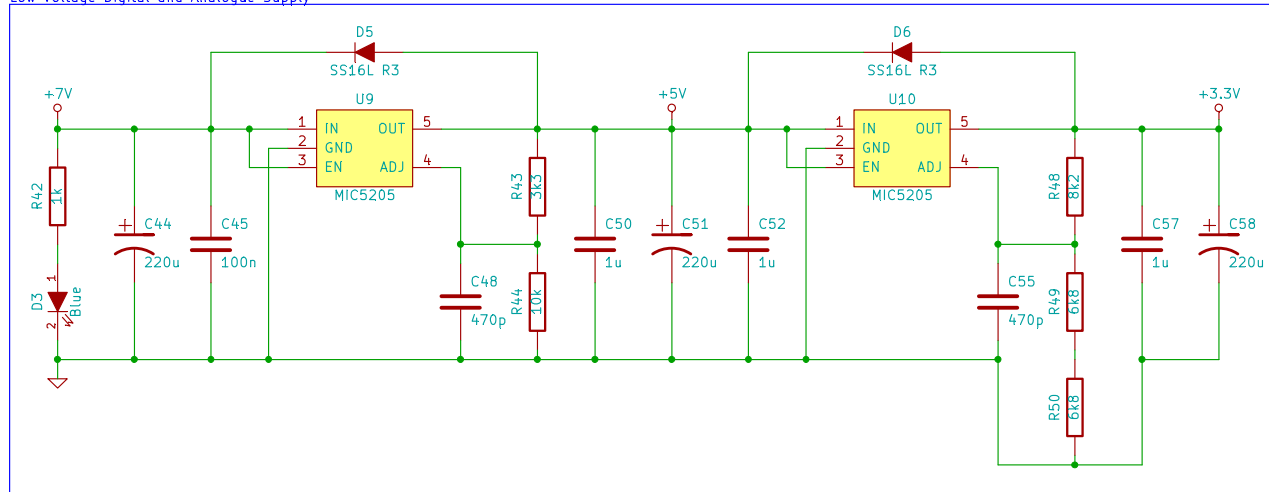
Supply Decoupling



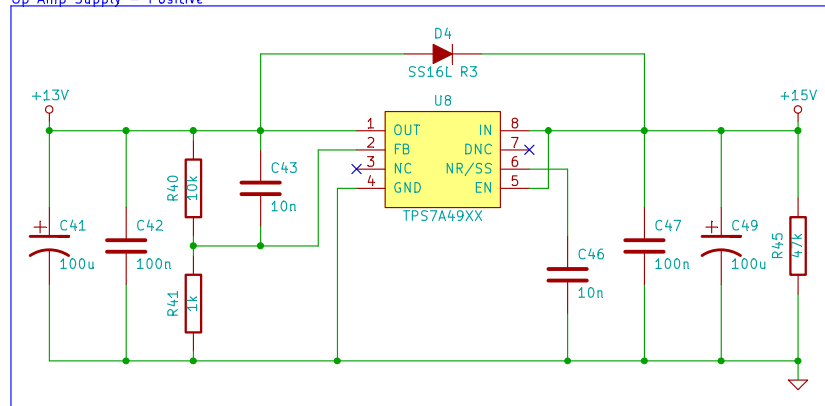
Output Filter:
150kHz, 2nd Order Butterworth
3.75 Vrms FS Output

Drawn by: PS KEMP		
File:		
Sheet: /IV_Filter/		
Title: I/V and Output Filter		
Size: A4	Date: 23 aug 2014	Rev: Draft 3
KiCad E.D.A. eeschema (2013-03-04 BZR 3984)-stable		Id: 4/5

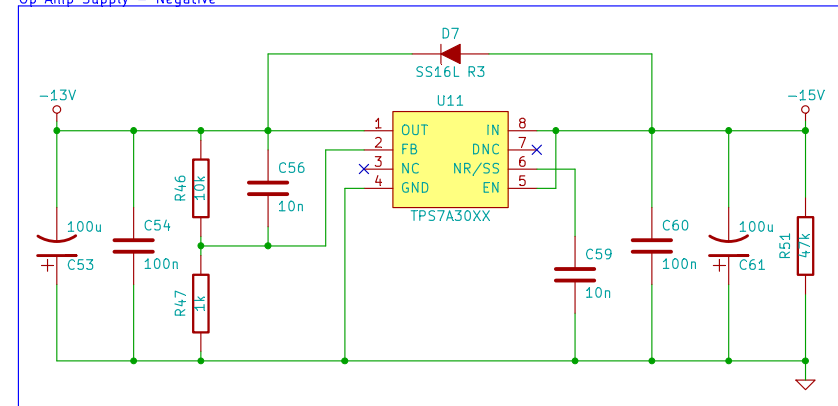
Low Voltage Digital and Analogue Supply



Op Amp Supply – Positive



Op Amp Supply – Negative



Drawn by:

PS KEMP

File:

Sheet: /Power/

Title: Power

Size: A4

Date: 23 aug 2014

Rev: Draft 3

KiCad E.D.A. eschema (2013-03-04 BZR 3984)-stable

Id: 5/5