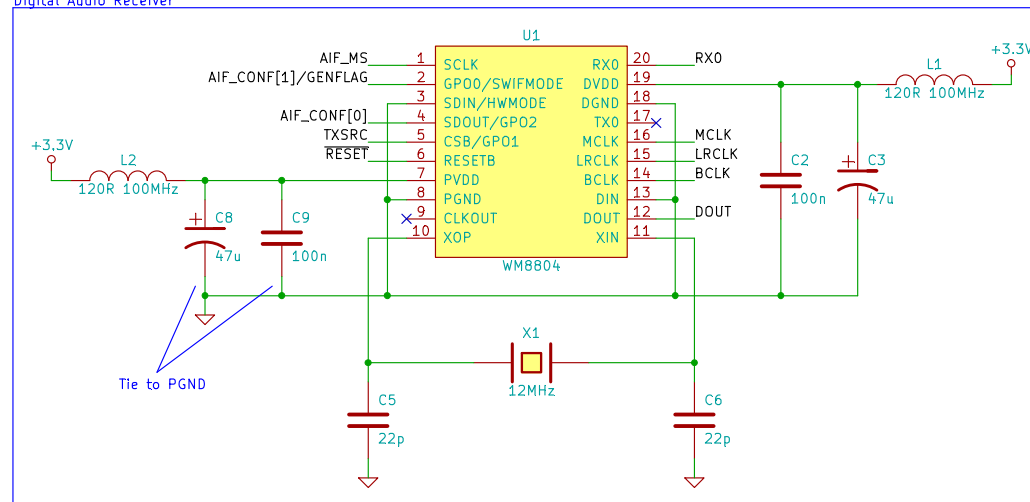
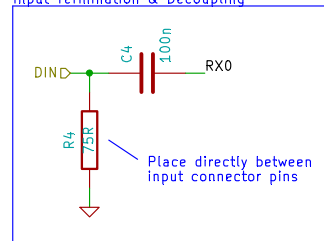


Drawn by: <b>PS KEMP</b>		
File:		
Sheet: /		
<b>Title: Top</b>		
Size: A4	Date: 22 aug 2014	Rev: Draft 2
KiCad E.D.A. eeschema (2013-03-04 BZR 3984)-stable		Id: 1/5

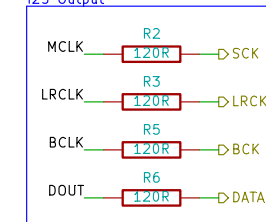
# Digital Audio Receiver



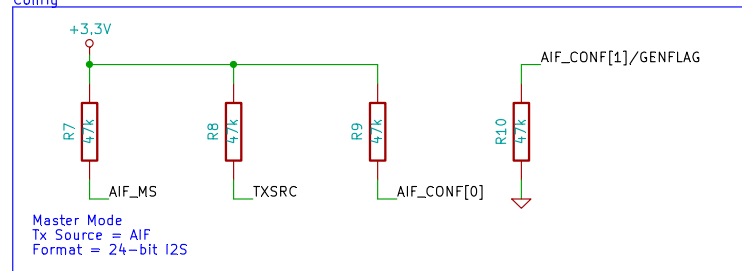
## Input Termination & Decoupling



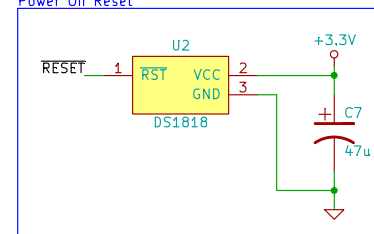
## I2S Output



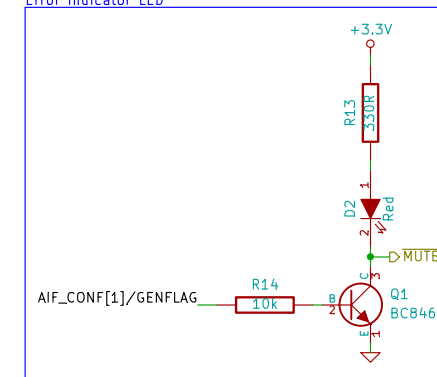
## Config



## Power On Reset



## Error Indicator LED



Drawn by:

**PS KEMP**

File:

Sheet: /Receiver/

**Title: Receiver**

Size: A4

Date: 22 aug 2014

KiCad E.D.A. eschema (2013-03-04 BZR 3984)-stable

**Rev: Draft 2**

Id: 2/5

Signal to Analogue Converter

\* FMT[1:0] = 00 (I2S, Stereo, Sharp DF)

U4

MONO 1 VCC2L 28

CHSL 2 AGND3L 27

DEM 3

LRCKD 4 LRCK IOUTL- 26

DATA 5 DATA AGND2 24

BCKD 6 BCKA VCC1 23

SCKD 7 SCK VCOML 22

DGND 8 VCOMR 21

VDD 9 IREF 20

MUTE 10 MUTE AGND1 19

FMT0 11 IOUTR- 18

FMT1 12 IOUTR+ 17

ZERO 13 AGND3R 16

RST 14 RST VCC2R 15

PCM1794A

+3.3V

L5 120R 100MHz

C16 47u

C17 100n

MUTE

ZERO

RST

C14 100n

C15 47u

L4 120R 100MHz

+5V

Tie to AGND3L

C18 100n

C19 47u

L6 120R 100MHz

+5V

Tie to AGND3R

IREF

R17 10k

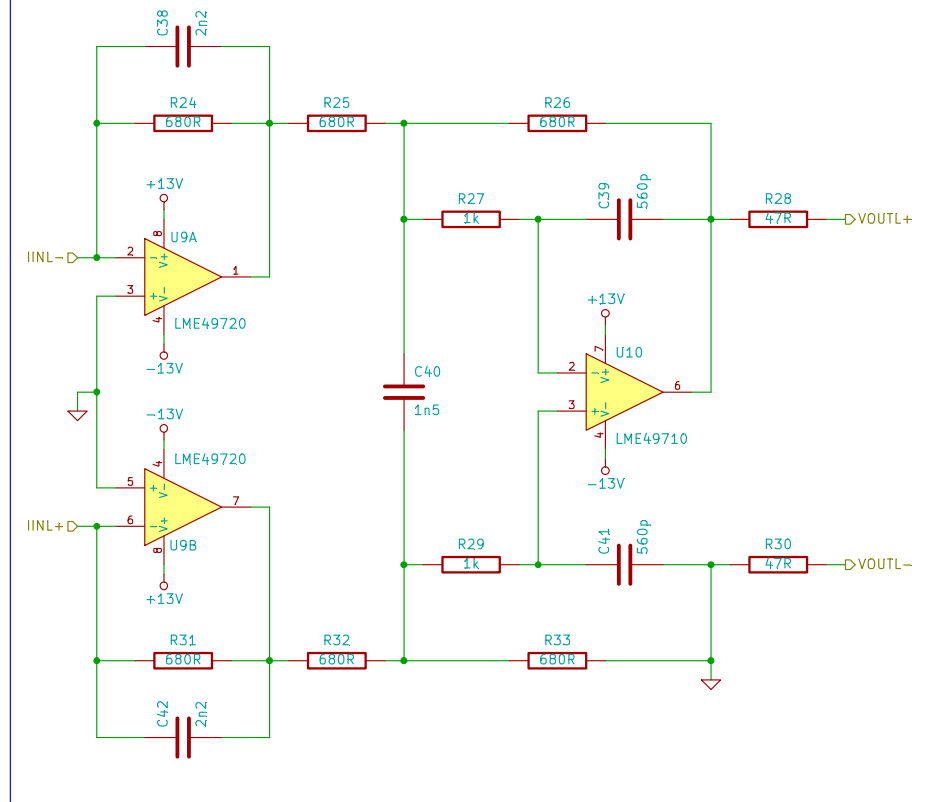
$I_{OUTFS} = 7.8mA$

RICADU L, L
-------------

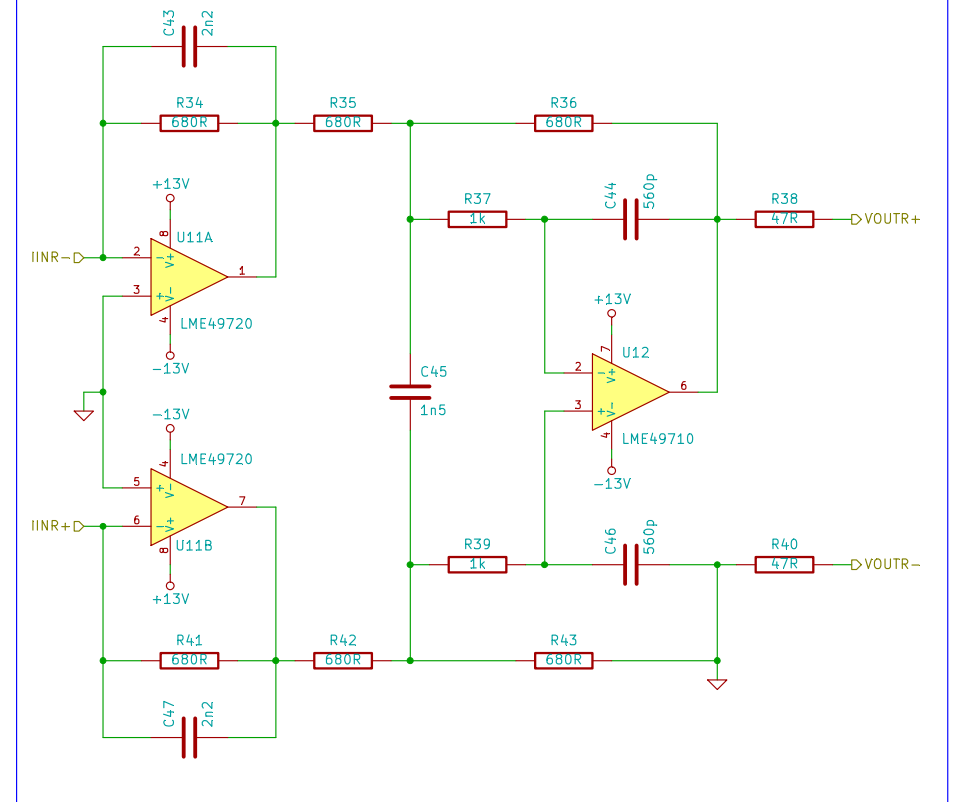
RICAD E.D.A. - Beschleunigung (2015-03-04 BZR 3984) - stable	4	
--	---	--

10: 3/3

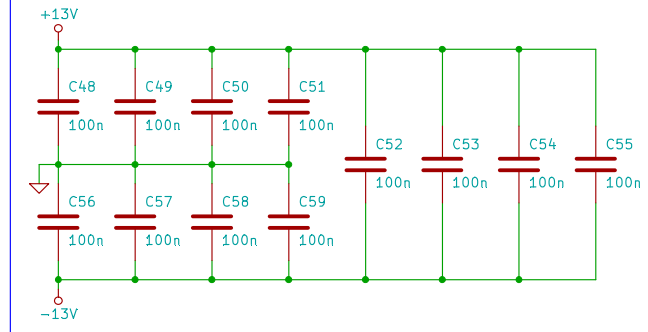
Left Channel I/V Conversion and LPF



Right Channel I/V Conversion and LPF



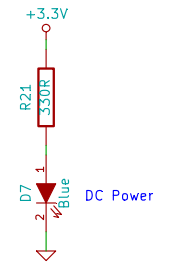
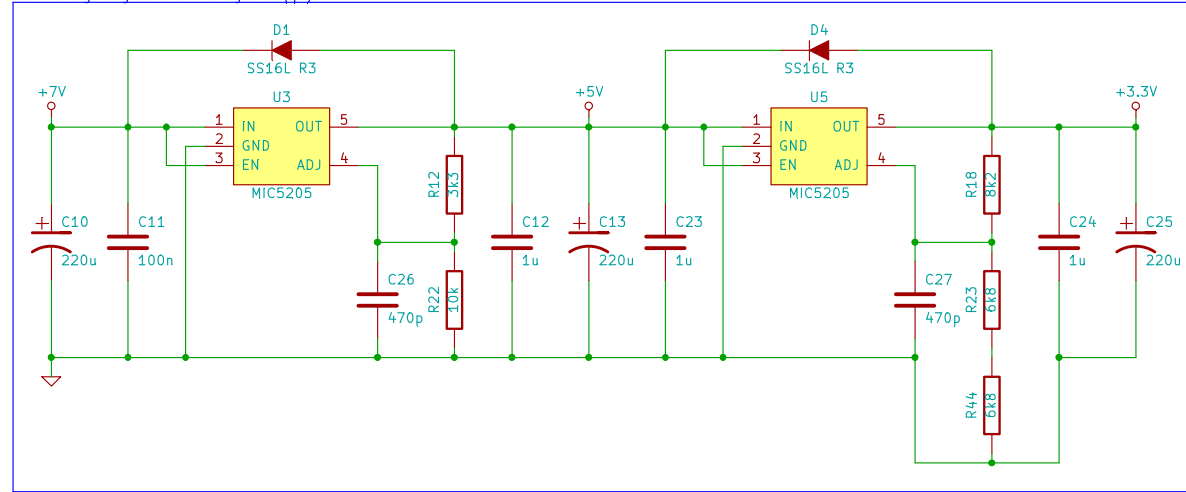
Supply Decoupling



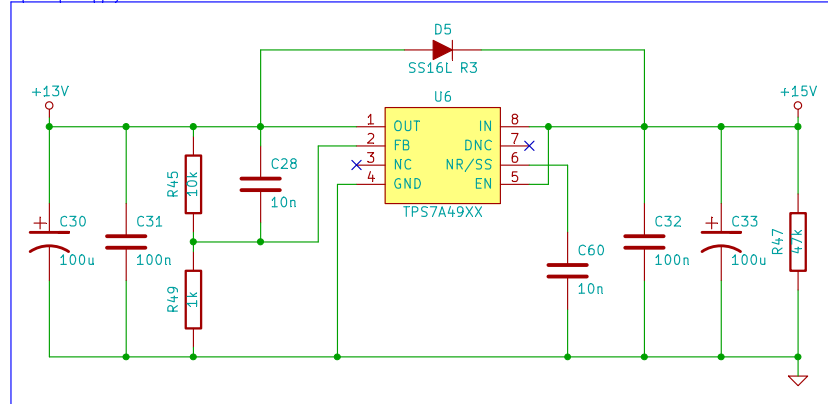
Output Filter:  
150kHz, 2nd Order Butterworth  
3.75 Vrms FS Output

Drawn by: <b>PS KEMP</b>		
File:		
Sheet: /IV_Filter/		
<b>Title: I/V and Output Filter</b>		
Size: A4	Date: 22 aug 2014	Rev: Draft 2
KiCad E.D.A. eeschema (2013-03-04 BZR 3984)-stable		Id: 4/5

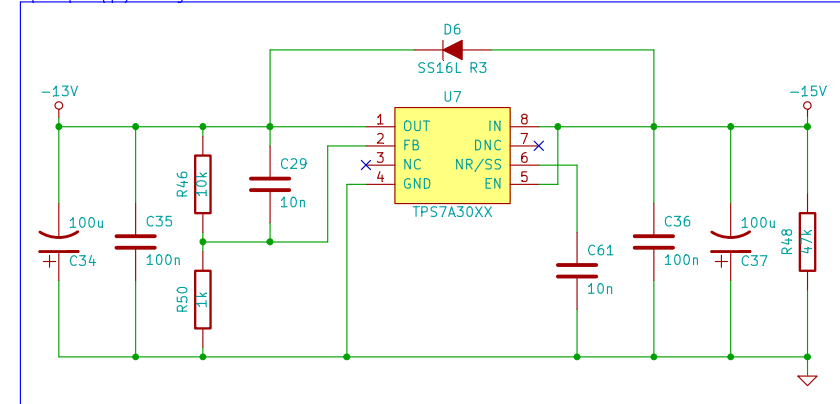
Low Voltage Digital and Analogue Supply



Op Amp Supply – Positive



Op Amp Supply – Negative



Drawn by:

**PS KEMP**

File:

Sheet: /Power/

**Title: Power**

Size: A4

Date: 22 aug 2014

**Rev: Draft 2**

KiCad E.D.A. eschema (2013-03-04 BZR 3984)-stable

Id: 5/5