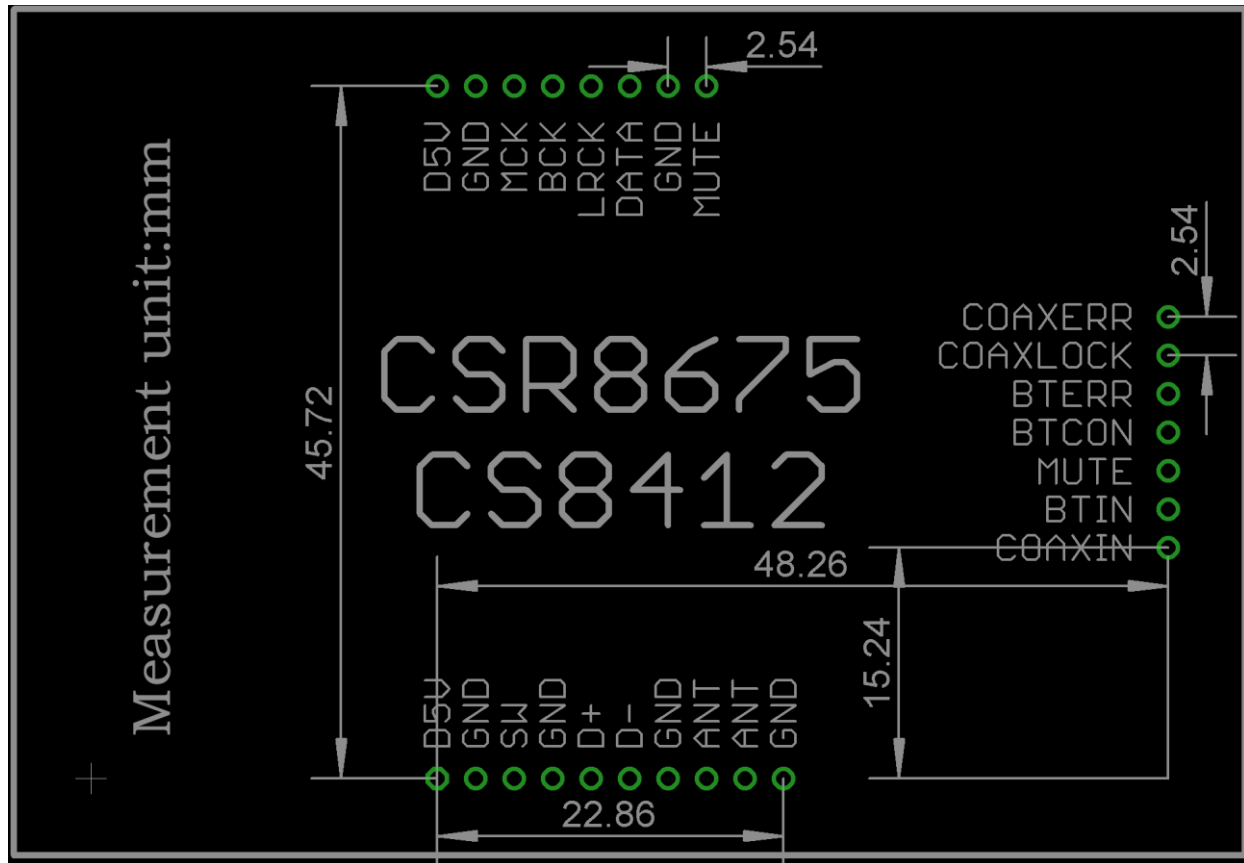


## 855 Series Module User Manual

**Module unit: length=80mm\*width=55mm\*height=27mm**

**Packaging size diagram:**



**The bottom left corner is the first pin:**

- 1. Digital +5V input**
- 2. GND**
- 3. Signal switch (default for Bluetooth input when suspended, COAX coaxial signal input when connected to+5V)**
- 4. GND**
- 5. COAX balanced positive signal input (coaxial single ended input)**
- 6. COAX balanced negative signal input (coaxial single ended grounded)**

terminal)

**7. COAX balanced grounding terminal**

**8. Bluetooth antenna input**

**9. Bluetooth antenna input**

**10. Bluetooth antenna grounding terminal**

**11. Bluetooth input indicator LED negative terminal connected (open collector can drive relay)**

**12. Coaxial input indicator LED negative terminal connected (open collector can drive relay)**

**13. Mute indicator LED light negative terminal connected or driven by mute relay (open collector can drive relay)**

**14. Bluetooth connection successful indicator LED light negative terminal connected (open collector can drive relay)**

**15. Bluetooth connection error indicator LED negative terminal connected (open collector can drive relay)**

**16. Connect the negative terminal of the coaxial signal lock indicator LED light (open collector can drive the relay)**

**17. Coaxial signal error indicator LED negative terminal connected (open collector can drive relay)**

**18. MUTE signal output (Play output low level, otherwise high level)**

**19. Output signal grounding terminal**

**20. Standard IIS audio data signal DATA signal output**

- 21. Standard IIS Word Clock Signal WCK/WCLK/LRCK Output**
- 22. Standard IIS bit clock signal BCK/BCLK output**
- 23. Standard IIS master clock signal MCK/MCLK output**
- 24. GND**
- 25. Digital power output terminal+5V**