

CEN-U05 CEN-U06 CEN-U07 NPN  
CEN-U55 CEN-U56 CEN-U57 PNP

# COMPLEMENTARY SILICON POWER TRANSISTORS



TO-202 CASE



www.centrasemi.com

## DESCRIPTION:

The CENTRAL SEMICONDUCTOR CEN-U05/U55 series types are complementary silicon power transistors designed for general purpose audio amplifier applications. These devices are electrically equivalent to National Semiconductor's NSDU05, NSDU06, NSDU07, NSDU55, NSDU56, and NSDU57.

## MARKING: FULL PART NUMBER

## APPLICATIONS:

- Designed for general purpose high voltage amplifiers and drivers

## FEATURES:

- High Collector-Emitter breakdown voltage
- High 10W power dissipation

## MAXIMUM RATINGS: ( $T_C=25^{\circ}\text{C}$ )

Collector-Base Voltage	
Collector-Emitter Voltage	
Emitter-Base Voltage	
Continuous Collector Current	
Power Dissipation	
Power Dissipation ( $T_A=25^{\circ}\text{C}$ )	
Operating and Storage Junction Temperature	
Thermal Resistance	
Thermal Resistance	

	CEN-U05 CEN-U55	CEN-U06 CEN-U56	CEN-U07 CEN-U57	UNITS
SYMBOL $V_{CBO}$	60	80	100	V
$V_{CEO}$	60	80	100	V
$V_{EBO}$		4.0		V
$I_C$		2.0		A
$P_D$		10		W
$P_D$		1.75		W
$T_J, T_{stg}$		-65 to +150		$^{\circ}\text{C}$
$\theta_{JA}$		71.4		$^{\circ}\text{C/W}$
$\theta_{JC}$		12.5		$^{\circ}\text{C/W}$

## ELECTRICAL CHARACTERISTICS: ( $T_C=25^{\circ}\text{C}$ unless otherwise noted)

SYMBOL	TEST CONDITIONS	MIN	MAX	UNITS
$I_{CBO}$	$V_{CB}=\text{Rated } V_{CBO}$		0.1	$\mu\text{A}$
$I_{EBO}$	$V_{EB}=4.0\text{V}$		100	$\mu\text{A}$
$BV_{CEO}$	$I_C=1.0\text{mA}$ (CEN-U05, CEN-U55)	60		V
$BV_{CEO}$	$I_C=1.0\text{mA}$ (CEN-U06, CEN-U56)	80		V
$BV_{CEO}$	$I_C=1.0\text{mA}$ (CEN-U07, CEN-U57)	100		V
$V_{CE(SAT)}$	$I_C=250\text{mA}, I_B=10\text{mA}$		0.5	V
$V_{CE(SAT)}$	$I_C=250\text{mA}, I_B=25\text{mA}$		0.35	V
$V_{BE(ON)}$	$V_{CE}=1.0\text{V}, I_C=250\text{mA}$		1.2	V
$h_{FE}$	$V_{CE}=1.0\text{V}, I_C=50\text{mA}$	80		
$h_{FE}$	$V_{CE}=1.0\text{V}, I_C=250\text{mA}$	50		
$h_{FE}$	$V_{CE}=1.0\text{V}, I_C=500\text{mA}$	20		
$f_T$	$V_{CE}=5.0\text{V}, I_C=200\text{mA}, f=100\text{MHz}$	50		MHz
$C_{ob}$	$V_{CB}=10\text{V}, I_E=0, f=1.0\text{MHz}$		30	pF

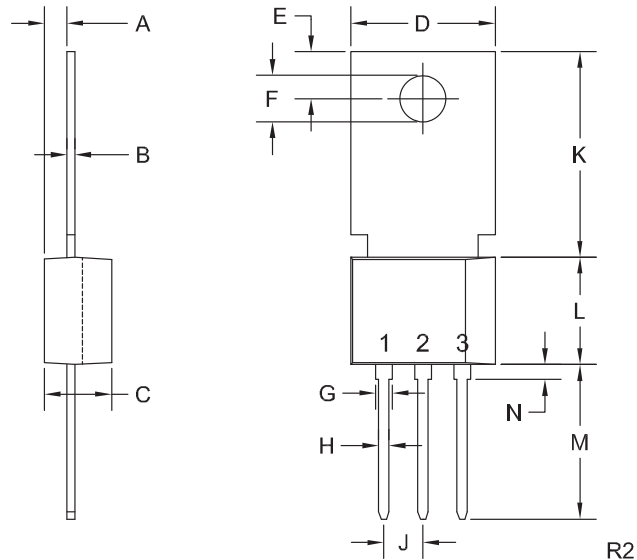
R2 (20-January 2012)

CEN-U05 CEN-U06 CEN-U07 NPN  
CEN-U55 CEN-U56 CEN-U57 PNP

COMPLEMENTARY SILICON  
POWER TRANSISTORS



# TO-202 CASE - MECHANICAL OUTLINE



## LEAD CODE:

- 1) Emitter
- 2) Base
- 3) Collector
- Tab is common to pin 3

## MARKING:

FULL PART NUMBER

DIMENSIONS				
SYMBOL	INCHES		MILLIMETERS	
	MIN	MAX	MIN	MAX
A	0.055	0.071	1.40	1.80
B	0.016	0.024	0.40	0.60
C	0.173	0.181	4.40	4.60
D	0.374	0.413	9.50	10.5
E	0.118	0.154	3.00	3.90
F (DIA)	0.124	0.150	3.15	3.80
G	0.035	0.055	0.90	1.40
H	0.023	0.031	0.59	0.80
J	0.094	0.106	2.39	2.69
K	0.459	0.559	11.66	14.21
L	0.280	0.346	7.12	8.80
M	0.406	0.531	10.3	13.5
N	0.024	0.059	0.60	1.50

TO-202 (REV: R2)

R2 (20-January 2012)

## OUTSTANDING SUPPORT AND SUPERIOR SERVICES



---

### PRODUCT SUPPORT

Central's operations team provides the highest level of support to insure product is delivered on-time.

- Supply management (Customer portals)
- Inventory bonding
- Consolidated shipping options
- Custom bar coding for shipments
- Custom product packing

---

### DESIGNER SUPPORT/SERVICES

Central's applications engineering team is ready to discuss your design challenges. Just ask.

- Free quick ship samples (2<sup>nd</sup> day air)
- Online technical data and parametric search
- SPICE models
- Custom electrical curves
- Environmental regulation compliance
- Customer specific screening
- Up-screening capabilities
- Special wafer diffusions
- PbSn plating options
- Package details
- Application notes
- Application and design sample kits
- Custom product and package development

---

### REQUESTING PRODUCT PLATING

1. If requesting Tin/Lead plated devices, add the suffix "TIN/LEAD" to the part number when ordering (example: 2N2222A TIN/LEAD).
2. If requesting Lead (Pb) Free plated devices, add the suffix "PBFREE" to the part number when ordering (example: 2N2222A PBFREE).

---

### CONTACT US

#### Corporate Headquarters & Customer Support Team

Central Semiconductor Corp.  
145 Adams Avenue  
Hauppauge, NY 11788 USA  
Main Tel: (631) 435-1110  
Main Fax: (631) 435-1824  
Support Team Fax: (631) 435-3388  
[www.centrasemi.com](http://www.centrasemi.com)

**Worldwide Field Representatives:**  
[www.centrasemi.com/wwreps](http://www.centrasemi.com/wwreps)

**Worldwide Distributors:**  
[www.centrasemi.com/wwdistributors](http://www.centrasemi.com/wwdistributors)

---

For the latest version of Central Semiconductor's **LIMITATIONS AND DAMAGES DISCLAIMER**, which is part of Central's Standard Terms and Conditions of sale, visit: [www.centrasemi.com/terms](http://www.centrasemi.com/terms)

# Mouser Electronics

Authorized Distributor

Click to View Pricing, Inventory, Delivery & Lifecycle Information:

[Central Semiconductor:](#)

[CEN-U57 PBFREE](#)