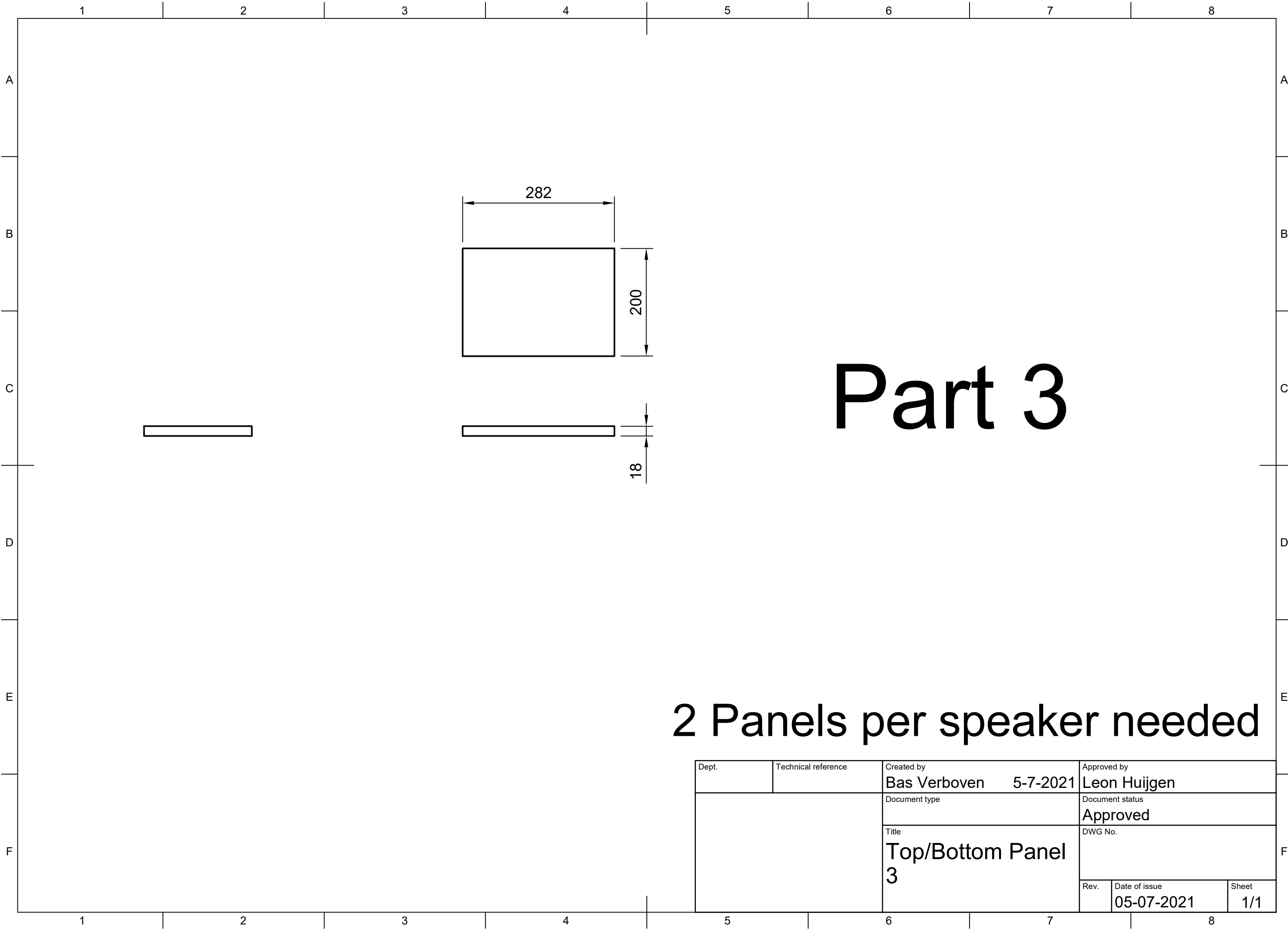
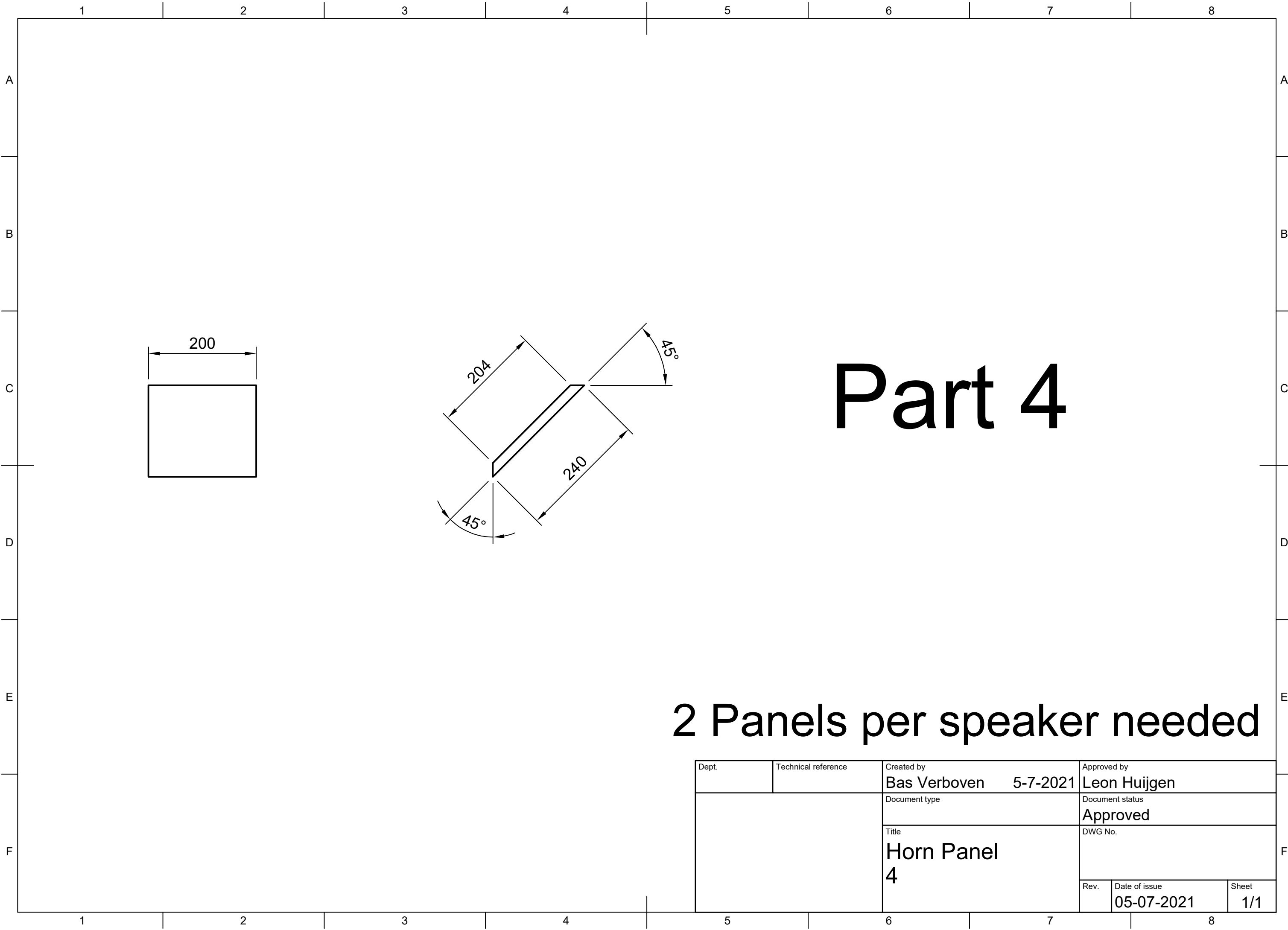


Dept.	Technical reference	Created by Bas Verboven	5-7-2021	Approved by Leon Huijgen
		Document type		Document status Approved
		Title Back Panel 2		DWG No.
		Rev.	Date of issue 05-07-2021	Sheet 1/1

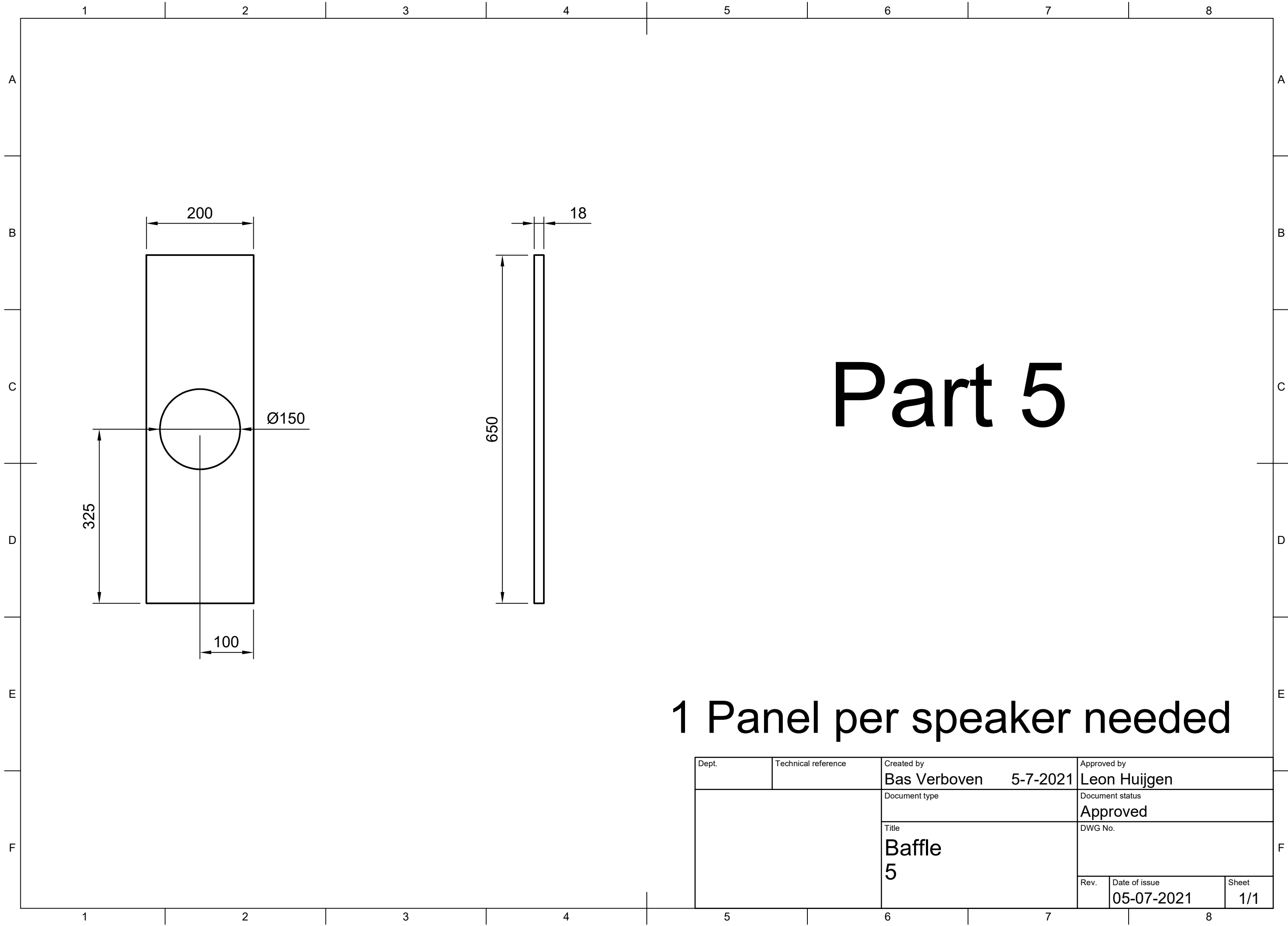




Part 4

2 Panels per speaker needed

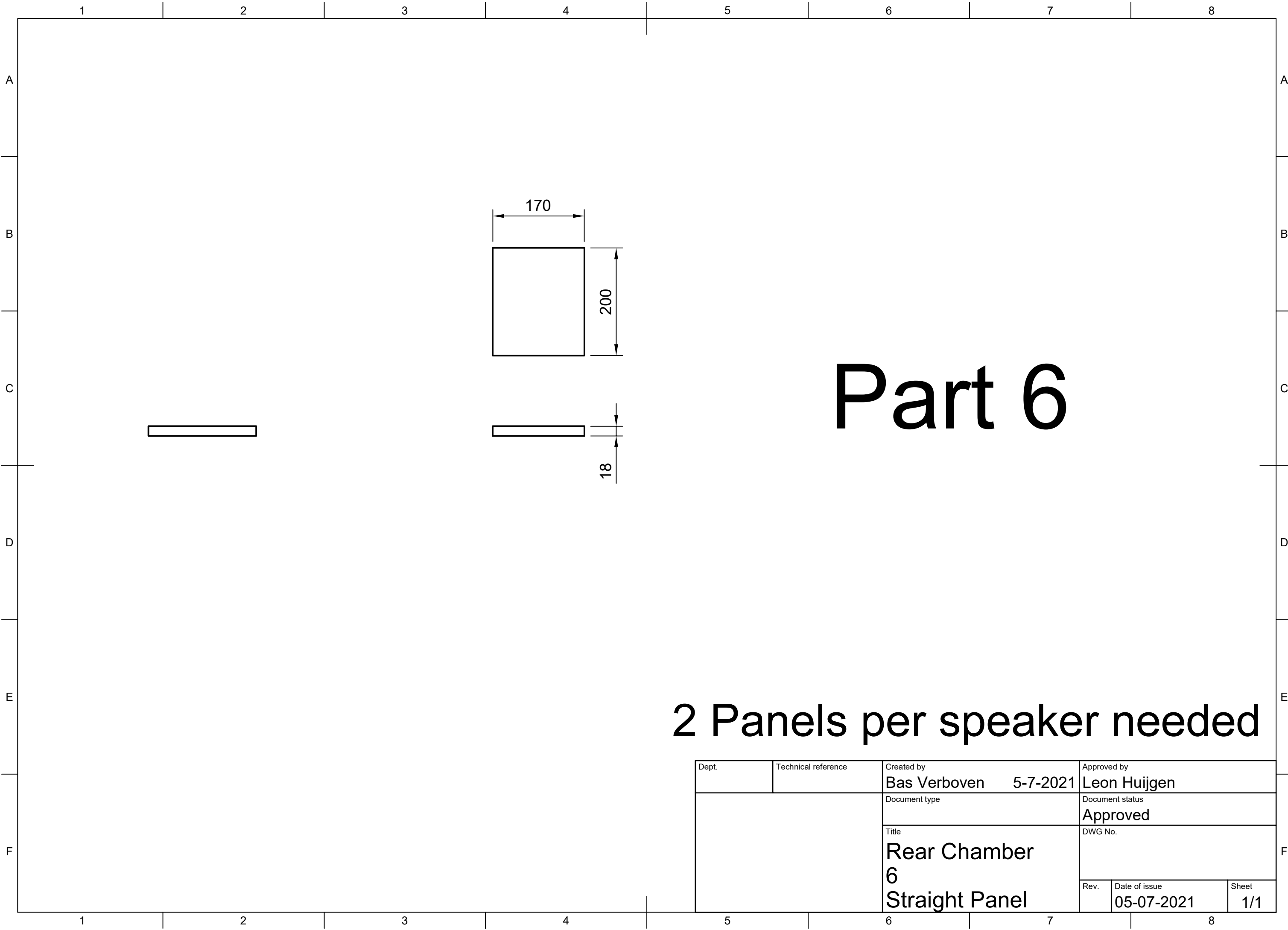
Dept.	Technical reference	Created by Bas Verboven	5-7-2021	Approved by Leon Huijgen
		Document type	Document status Approved	
		Title Horn Panel 4	DWG No.	
		Rev.	Date of issue 05-07-2021	Sheet 1/1



Part 5

1 Panel per speaker needed

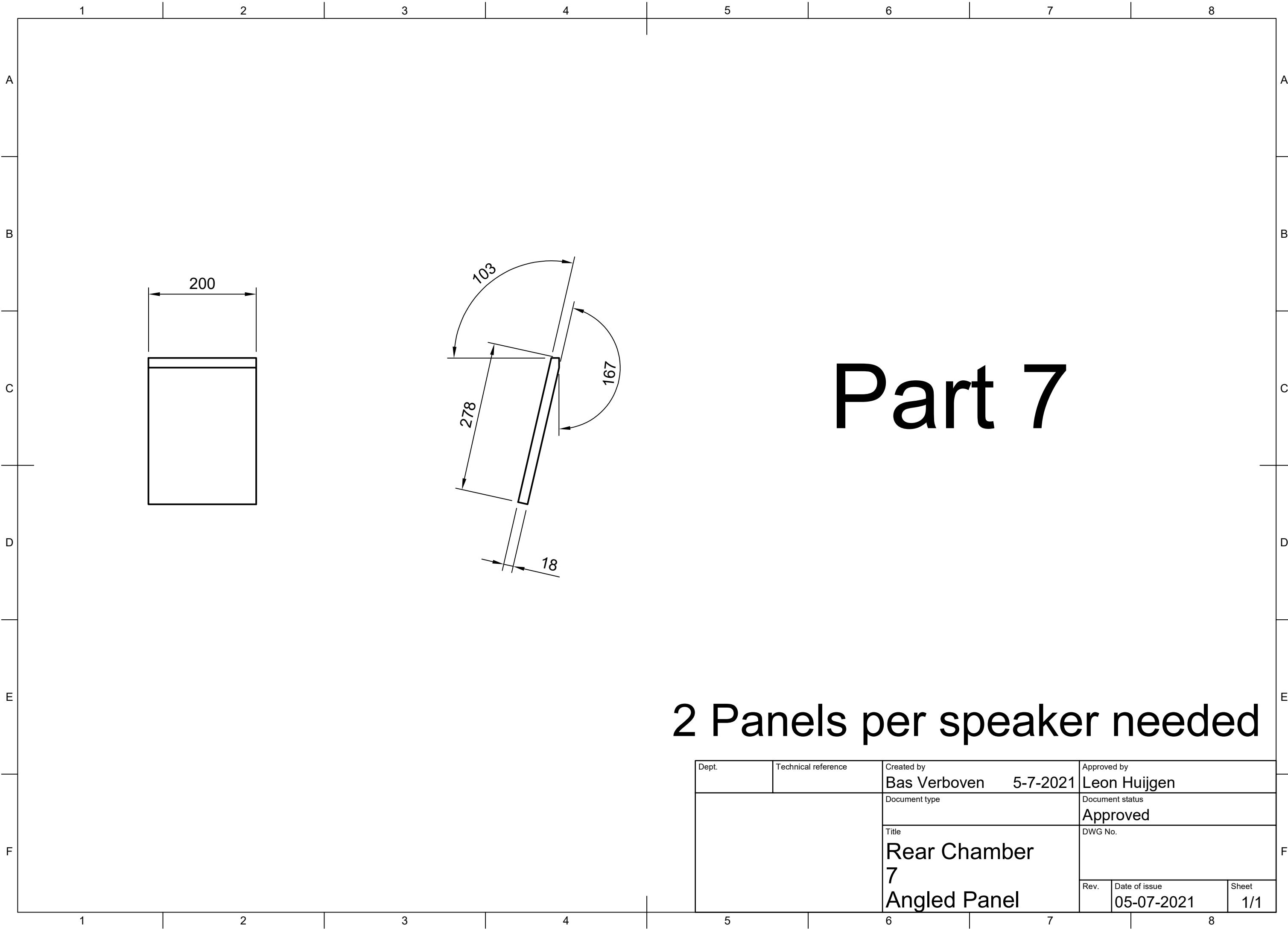
Dept.	Technical reference	Created by Bas Verboven	5-7-2021	Approved by Leon Huijgen
		Document type		Document status Approved
		Title Baffle 5		DWG No.
		Rev.	Date of issue 05-07-2021	Sheet 1/1

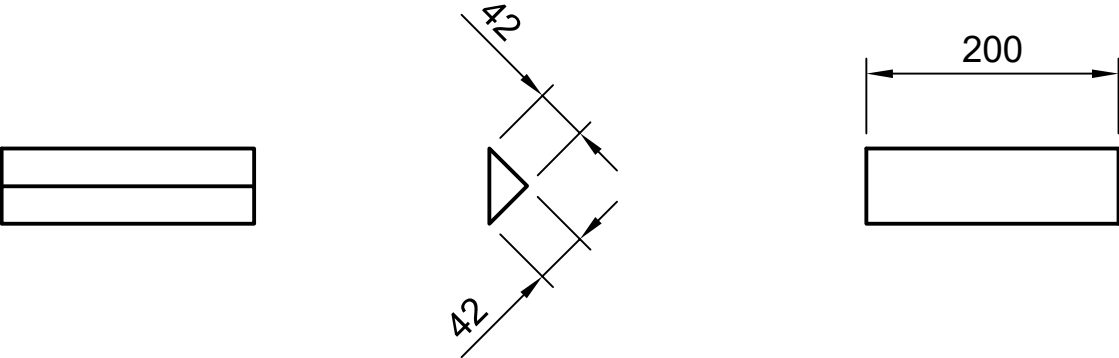
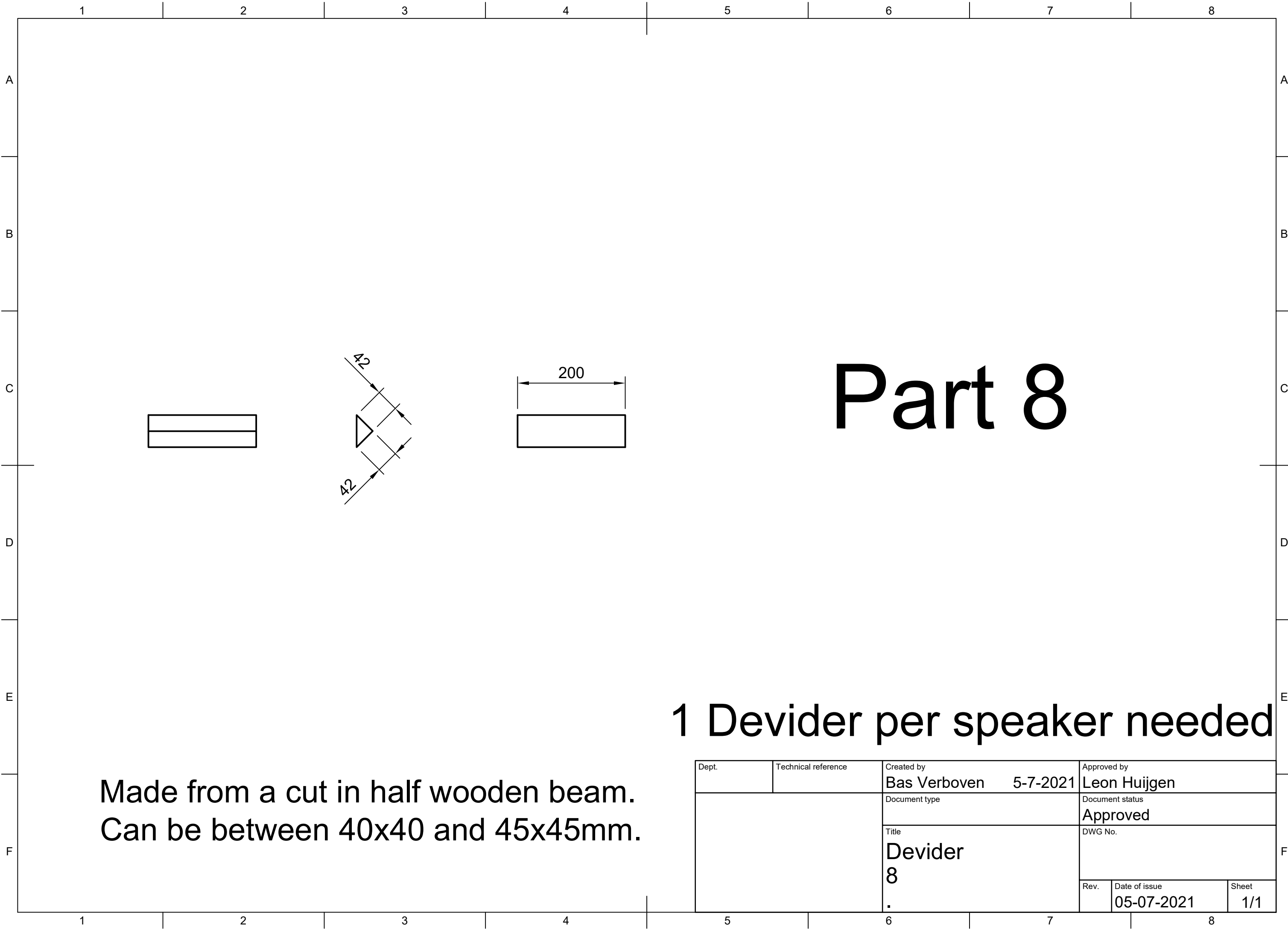


Part 6

2 Panels per speaker needed

Dept.	Technical reference	Created by Bas Verboven 5-7-2021	Approved by Leon Huijgen		
		Document type	Document status Approved		
		Title Rear Chamber 6	DWG No.		
		Straight Panel			
		Rev.	Date of issue 05-07-2021	Sheet 1/1	



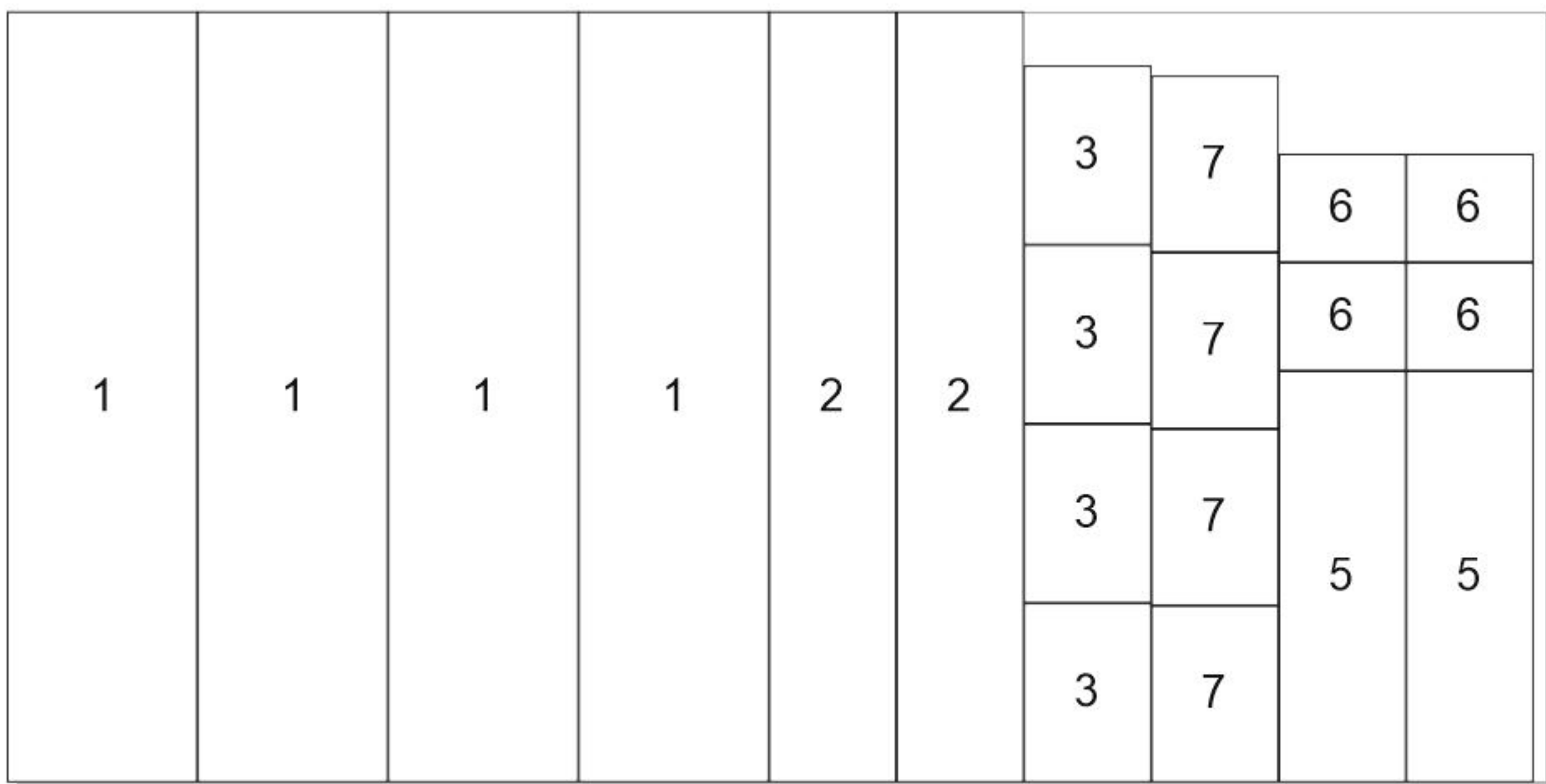


Part 8

Made from a cut in half wooden beam.
Can be between 40x40 and 45x45mm.

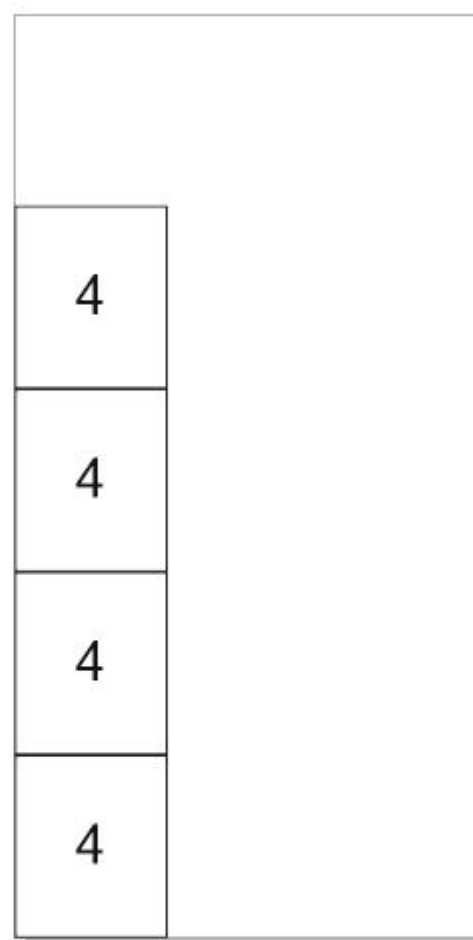
1 Devider per speaker needed

Dept.	Technical reference	Created by Bas Verboven	5-7-2021	Approved by Leon Huijgen
		Document type		Document status Approved
		Title Devider 8		DWG No.
		Rev.	Date of issue 05-07-2021	Sheet 1/1

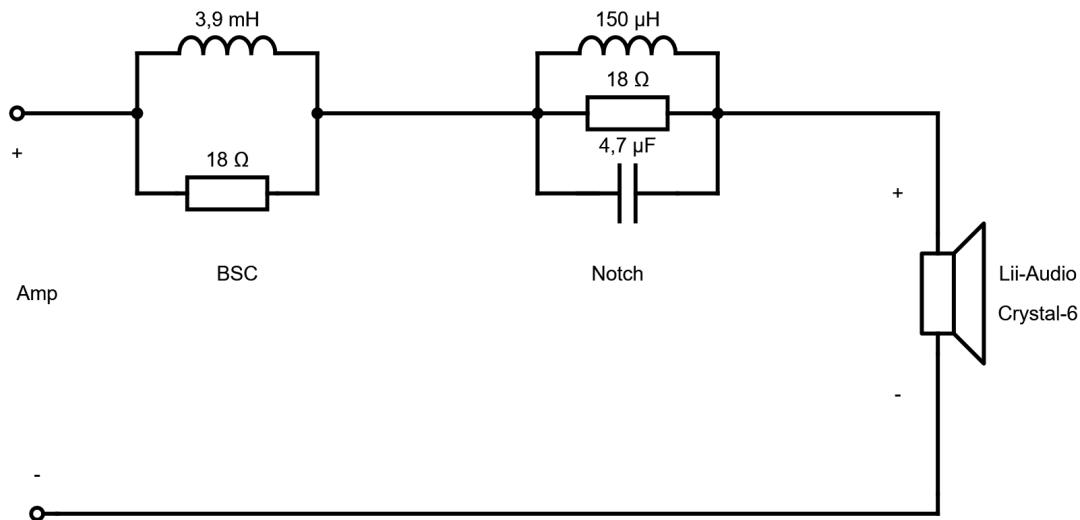


2440x1220x18mm Panel

Vertical cuts first to get the most out of the material



1220x610x18mm Panel









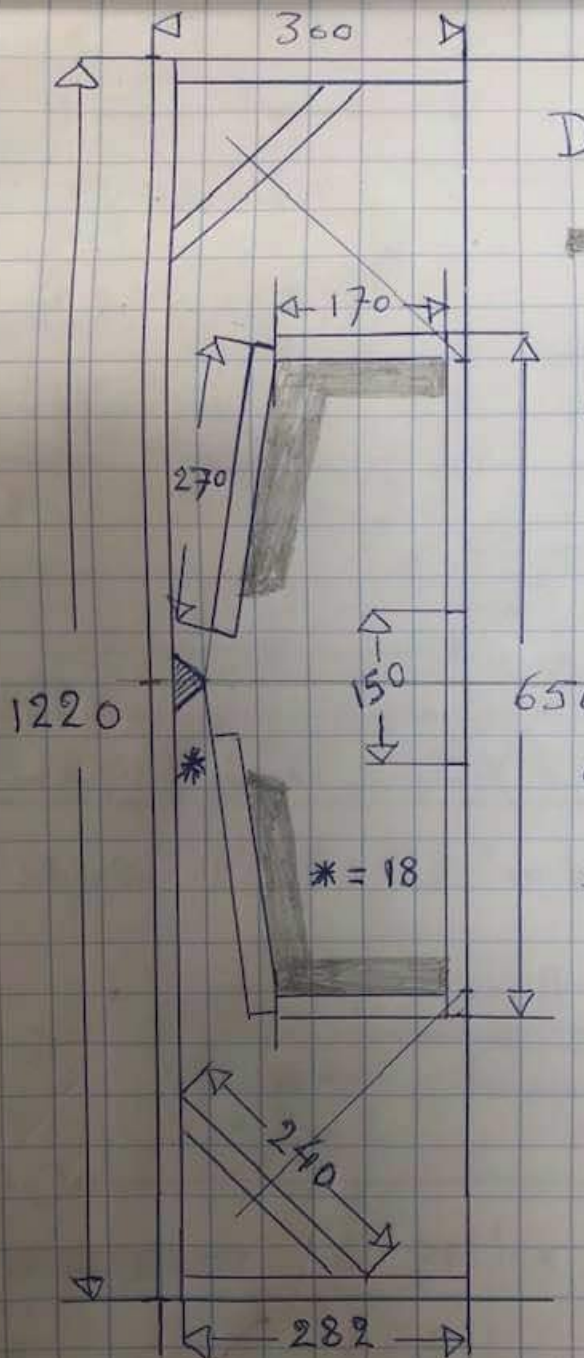












DM BVR C-6

3cm pritex

all inner panels
200 mm

BSC

amp

C-6

